



# Louis Bank of Commerce

835-857 FIFTH AVENUE  
SAN DIEGO, CA 92101

**BRET MORRISS**

619-870-8665  
Bret.Morriss@Cast-Cap.com  
CA License #02037074

**RYAN KING**

619-567-2677  
Ryan.King@Cast-Cap.com  
CA License #01885401

**JOSH SIMMS**

619-500-7473  
Josh.Simms@Cast-Cap.com  
CA License #02080261

**CARRIE DUDA**

619-489-5373  
Carrie.Duda@Cast-Cap.com  
CA License #02199169

CAST  
CAPITAL PARTNERS





## PROPERTY OVERVIEW

Cast Capital Partners introduces the Louis Bank of Commerce, one of San Diego's most architecturally significant commercial properties. Built in 1888, this four-story Baroque Revival landmark, known as The Queen of the Gaslamp, features intricate Victorian detailing, soaring towers, and a rich history that reflects the evolution of the city. Over the years, it has housed a range of tenants, from Madame Cora's Golden Poppy Hotel brothel to creative offices and renowned restaurants. Today, the property offers fully restored interiors with original hardwood floors, high ceilings, and exposed brick walls, seamlessly blending historic character with modern functionality.

Situated in the heart of the Gaslamp Quarter, the property is surrounded by top dining, entertainment, and hospitality destinations, ensuring a prime location with consistent foot traffic. The property currently hosts a diverse tenant mix, and its turnkey, fully furnished office suites offer private elevator access, efficient layouts, and abundant natural light, making it an attractive space for professional and creative users alike.



## PROPERTY DETAILS



FLEXIBLE SUITE SIZES:  
300 SF UP TO 4,400 SF CONTIGUIOUS



HISTORIC LANDMARK WITH CHARACTER +  
MODERN AMENITIES (BALCONIES, SKYLIGHTS,  
ATRIUM, HARDWOOD FLOORS)



ORIGINAL WOOD FLOORS  
& EXPOSED BRICK WALLS



IMMEDIATE OCCUPANCY &  
NEGOTIABLE LEASE TERMS



PRIME LOCATION,  
CLOSE TO ALL AMENITIES



FRESHLY RENOVATED 4TH FLOOR,  
IDEAL FOR COMPANIES NEEDING 400 - 4,400 SF







\*Conceptual Rendering

# SUITES AVAILABLE FOR LEASE

**RETAIL: \$3.50/SF NNN**

SUITE 100 4,232 RSF

**OFFICE: From \$1.75/SF**

Full Service - Utilities Included

SUITE 102 268 RSF

SUITE 205 769 RSF

SUITE 207 1,633 RSF

SUITE 307 313 RSF

SUITE 312 501 RSF

SUITE 314 325 RSF

SUITE 315 309 RSF

SUITE 400 ±4,421 RSF





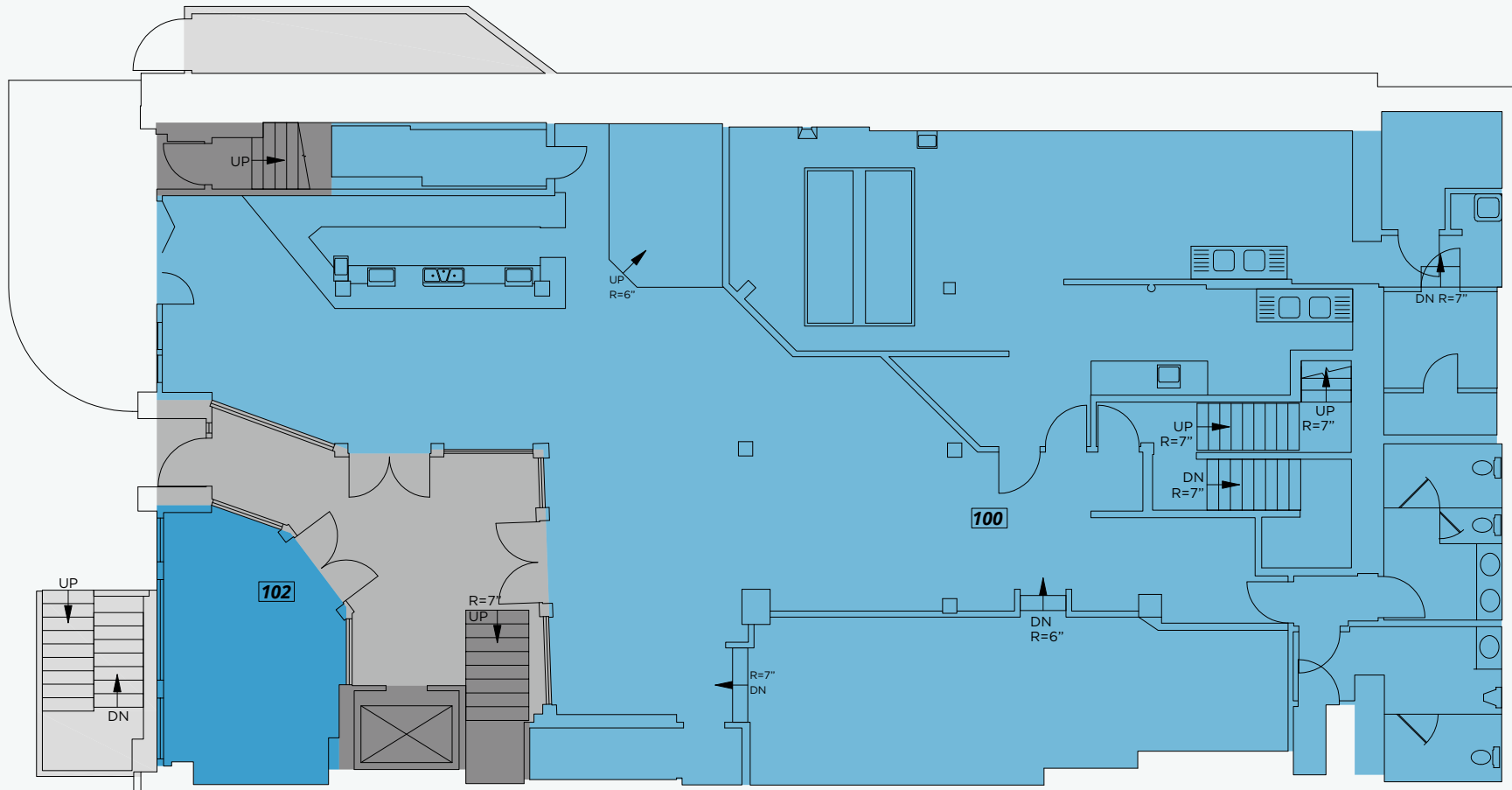
# AVAILABLE GROUND FLOOR

SUITE  
SIZE  
ASKING RATE  
USE

**100**  
**±4,500 SF**  
**\$3.50/SF NNN**  
**RESTAURANT/RETAIL**

SUITE  
SIZE  
ASKING RATE  
USE

**102**  
**268 SF**  
**\$3.00/SF FS**  
**OFFICE**

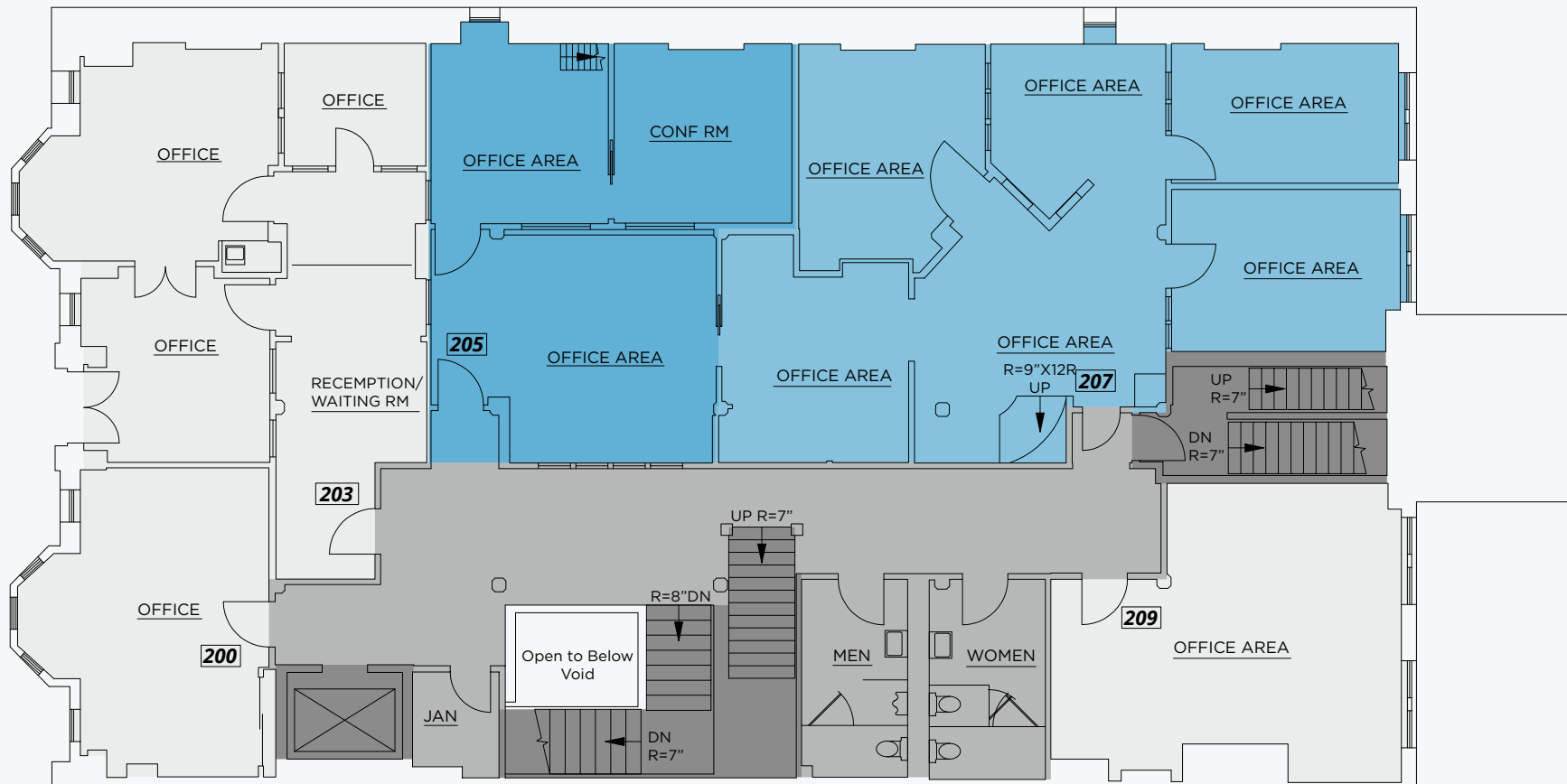


■ AVAILABLE ■ LEASED



## AVAILABLE SECOND FLOOR | \$1.75/SF FULL SERVICE

SUITE 205 | 769 RSF  
SUITE 207 | 1,633 RSF



■ AVAILABLE ■ LEASED



## AVAILABLE THIRD FLOOR | \$2.25/SF FULL SERVICE

SUITE 307 | 313 RSF  
SUITE 312 | 501 RSF

SUITE 314 | 292 RSF  
SUITE 315 | 309 RSF

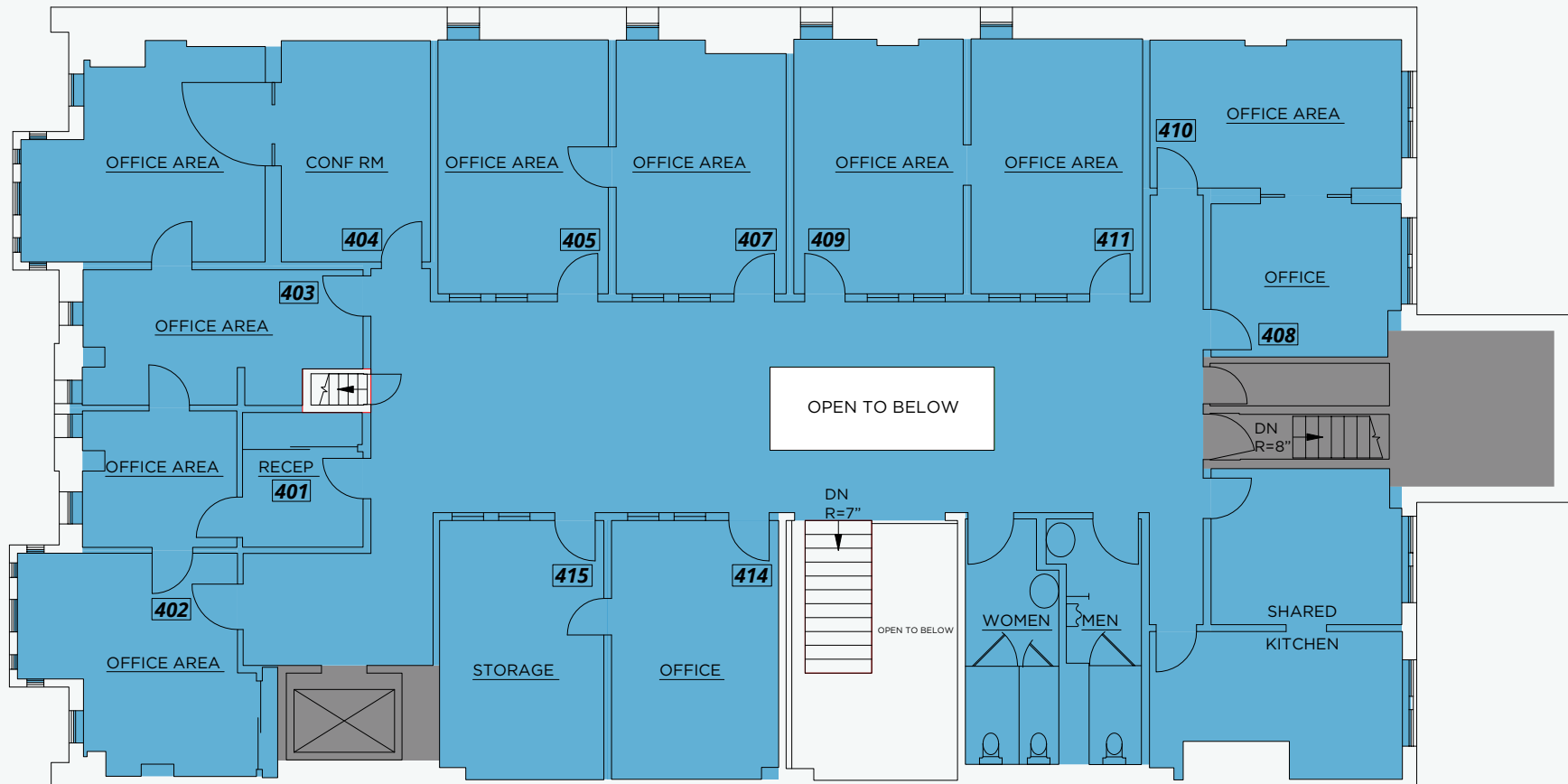


■ AVAILABLE ■ LEASED



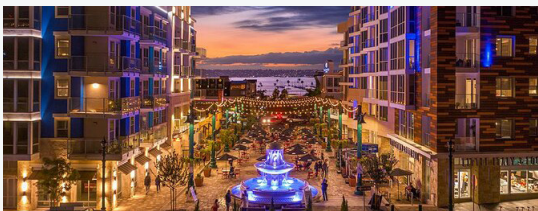
## AVAILABLE FOURTH FLOOR | \$1.75/SF FULL SERVICE

### SUITE 400 | ±4,421 RSF



■ AVAILABLE ■ LEASED





## THE LOCATION

Rising from 16 square-blocks in downtown San Diego, you'll find the historic Gaslamp Quarter, the heart and soul of San Diego. Gaslamp houses more than 200 of the city's finest restaurants, pubs, nightclubs, and retail shops, as well as offices and residential/work lofts. This is a one stop shop where everything is within a five minute walking distance and will surely make your night unforgettable.











# Louis Bank of Commerce

835-857 FIFTH AVENUE  
SAN DIEGO, CA 92101

**CAST**  
CAPITAL PARTNERS

5090 Shoreham Place Suite 100  
San Diego, CA 92122  
information@cast-cap.com  
(619) 308-6880

[www.Cast-Cap.com](http://www.Cast-Cap.com)

Copyright ©2025 CAST Capital Partners All rights reserved. This information above was obtained from sources deemed reliable. No warranties or representations, expressed or implied, are made as to the accuracy of the information contained herein, and same is submitted subject errors, omissions, change of price, rental or other conditions, withdrawal without notice, and to any special listing conditions imposed by our principals. This information is given with the understanding that all negotiations relating to the purchase, renting or leasing of the property described herein shall be conducted through CAST Capital Partners.

**BRET MORRISS**

619-870-8665  
Bret.Morriss@Cast-Cap.com  
CA License #02037074

**RYAN KING**

619-567-2677  
Ryan.King@Cast-Cap.com  
CA License #01885401

**JOSH SIMMS**

619-500-7473  
Josh.Simms@Cast-Cap.com  
CA License #02080261

**CARRIE DUDA**

619-489-5373  
Carrie.Duda@Cast-Cap.com  
CA License #02199169