

1200 W Bay Street

Savannah, GA

Industrial Warehouse



AVAILABLE FOR LEASE

CONTACT

Zachary Zakas
Elmwood & Co.
912.417.0009
zac@elmwood.co
Real Broker, LLC
855.450.0442

Elmwood
& Co.

real



PROPERTY SUMMARY

Industrial Warehouse with Mezzanine Retail & Office Area

1200 W Bay St, Savannah, GA 31415

- ±1.4 Acres Lot
- ±14,000 sq. ft. building
- ±2,352 sq. ft & 2,200 Mezzanine retail & office area
- 25 feet ceiling height
- 2 Truck high loading docks
- Zoned **Light Industrial**
- Manicured landscape with Security fence
- Excellent visibility with very high traffic count
- **Available now**





Georgia Ports
Authority

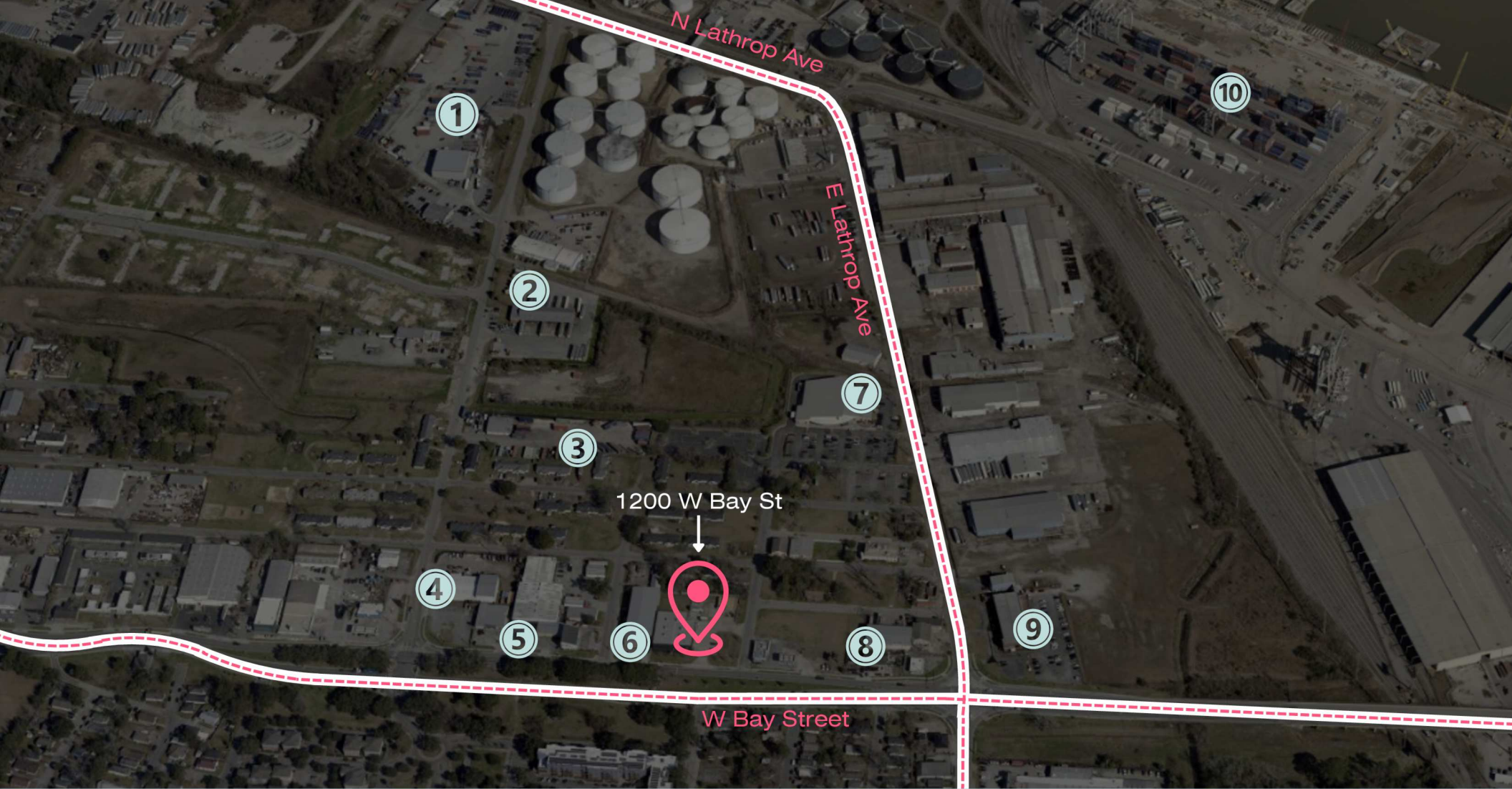
Lehwald St

Kane St

W Bay Street



1200 W Bay Street



LOCATION OVERVIEW

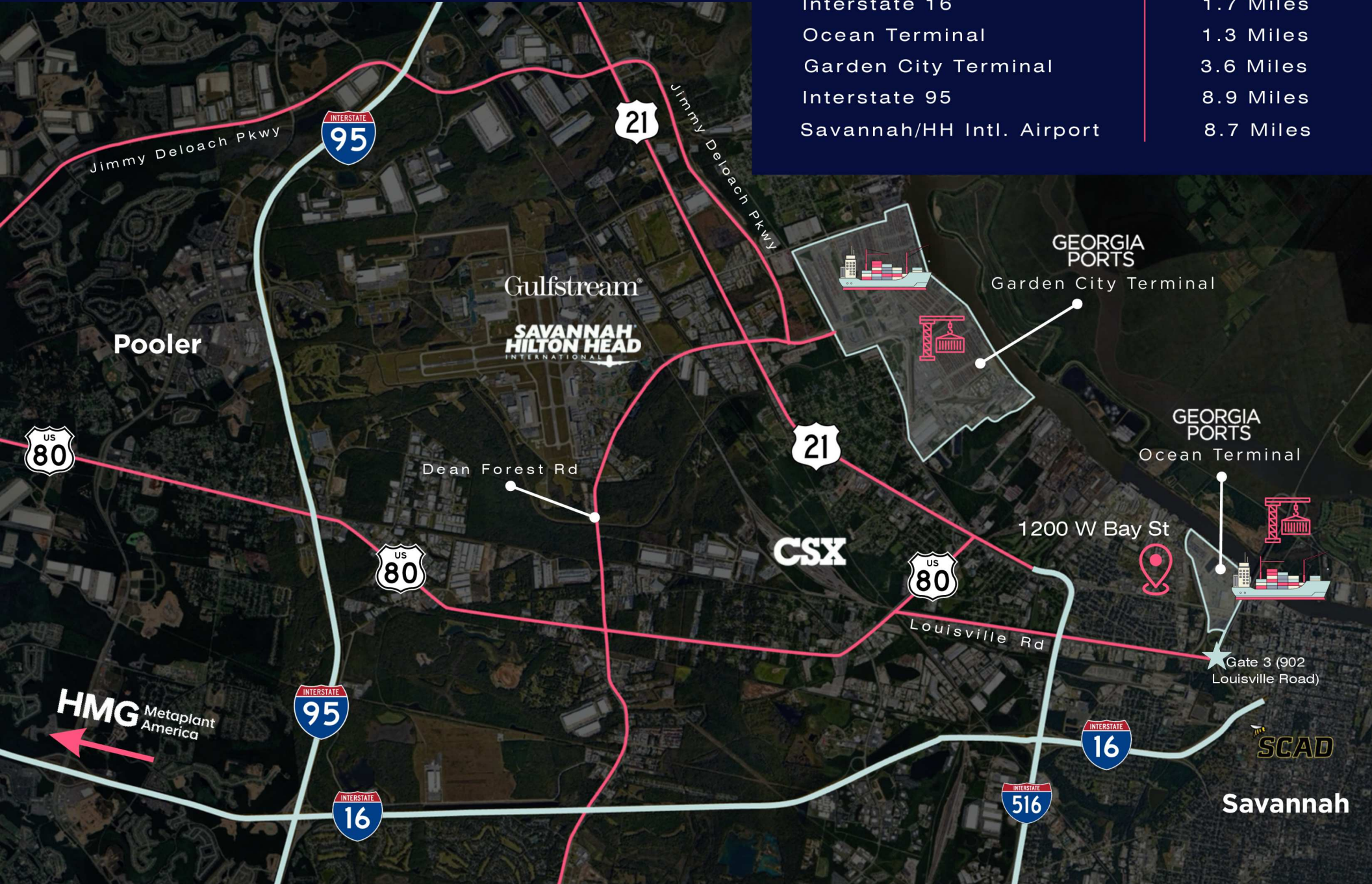
- 1 Platinum Towing Division
- 2 Central Transport
- 3 SLR Industries
- 4 Performance Energy
- 5 Chu's Supermarket

- 6 Port City Industrial & Marine Supply
- 7 International Longshoremen's Association
- 8 Tran Auto Repair
- 9 Savannah Chatham Metropolitan Police
- 10 Georgia Ports Authority Ocean Terminal

AERIAL MAP

Key Distances

Interstate 516	1.1 Miles
Interstate 16	1.7 Miles
Ocean Terminal	1.3 Miles
Garden City Terminal	3.6 Miles
Interstate 95	8.9 Miles
Savannah/HH Intl. Airport	8.7 Miles





1200 W Bay Street

SAVANNAH, GA

CONTACT

Zachary Zakas
Elmwood & Co.
912.417.0009
zac@elmwood.co

This information has been obtained from sources deemed reliable but has not been verified by Real Broker, LLC and is not guaranteed. All offerings are subject to errors, omissions, prior lease, or withdrawal without notice. No warranty or representation is made as to the accuracy of the information contained herein. All dimensions, square footages, and figures are approximate. Interested parties should conduct their own independent due diligence and consult appropriate professionals to verify all information.

**Elmwood
& Co.**

real

Real Broker, LLC
800 Battery Ave, Ste 100
Atlanta, GA 30339
gabroker@therealbrokerage.com
855.450.0442
onereal.com