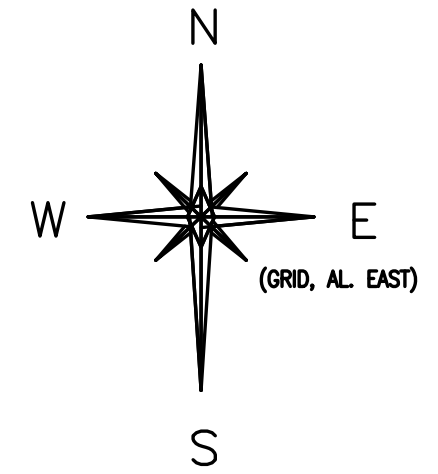
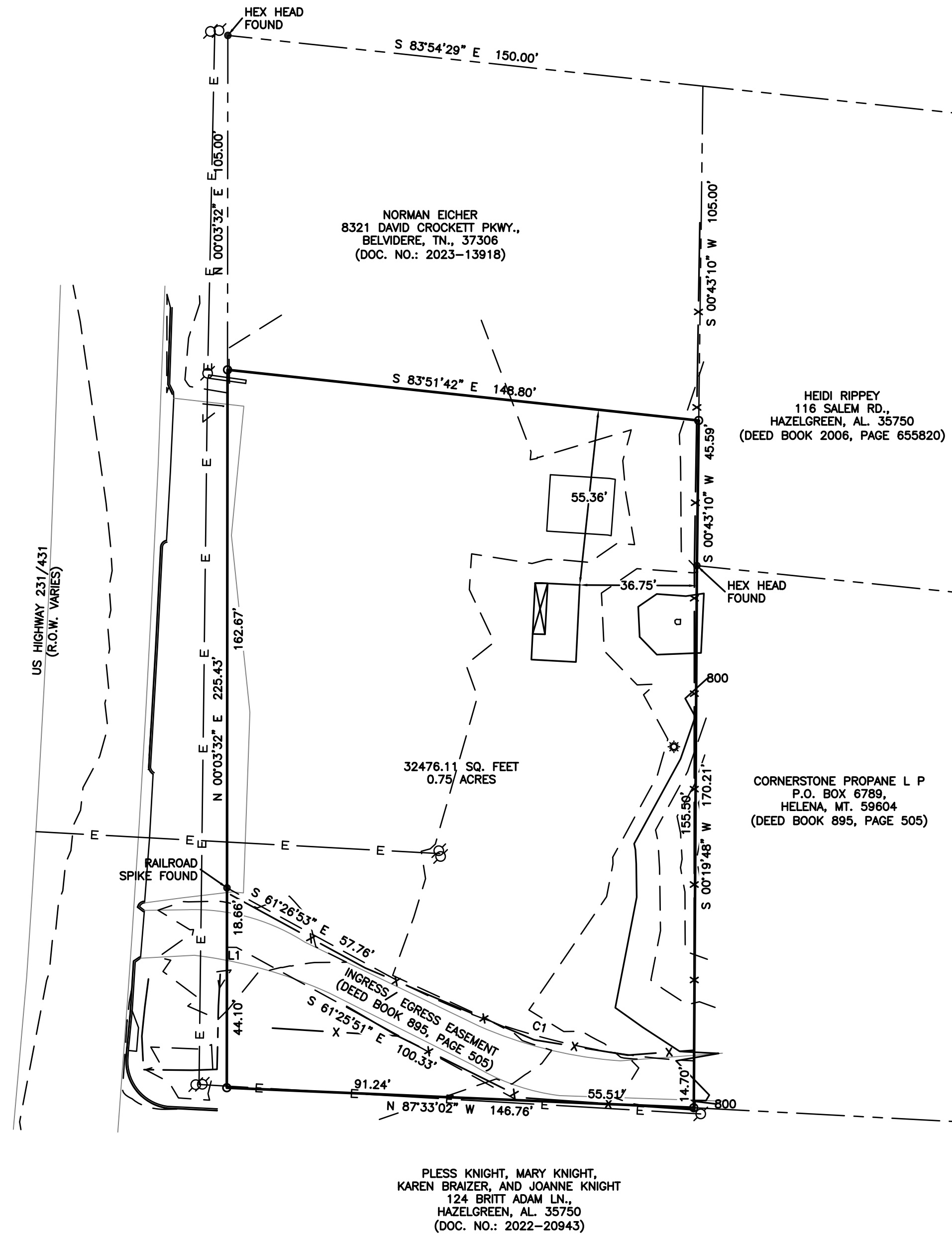


GEODETIC NOTES:

1. THE STATE PLANE COORDINATES SHOWN HEREON ARE BASED ON NAD83 HORIZONTAL DATUM.
2. GLOBAL POSITIONING METHODS WERE USED IN THE DETERMINATION.
3. THE CORRECTION FACTOR FOR THESE COORDINATES IS 0.99998 (GRID TO GROUND)



I, TROY PAUL HOLCOMB, A LICENSED LAND SURVEYOR IN THE STATE OF ALABAMA HEREBY CERTIFY THAT THIS PLAT AND THE SURVEY ON WHICH IT IS BASED HAVE BEEN PERFORMED IN ACCORDANCE WITH THE CURRENT REQUIREMENTS OF THE STANDARDS OF PRACTICE FOR LAND SURVEYING IN THE STATE OF ALABAMA, TO THE BEST OF MY KNOWLEDGE, INFORMATION AND BELIEF.



LINE TABLE		
LINE	BEARING	DISTANCE
L1	S 89°36'21" E	3.00'

CURVE TABLE					
CURVE	RADIUS	DELTA ANGLE	CHORD BEARING	CHORD LENGTH	ARC LENGTH
C1	221.30'	25°59'57"	S 74°25'51" E	99.56'	1100.42'



LEGEND:	
RBS = 1/2" REBAR SET AND CAPPED *M&A CA-1098LS*	E = EAST
RBF = REBAR FOUND	W = WEST
RRSS = RAILROAD SPIKE SET	U.&D. = UTILITY AND DRAINAGE
RRSF = RAILROAD SPIKE FOUND	M.B.L. = MINIMUM BUILDING LINE
P.O.B. = POINT OF BEGINNING	PKS = P.K. NAIL SET
(*) = RECORD MEASUREMENT	PKF = P.K. NAIL FOUND
D.B./PG. = DEED BOOK/PAGE	X = FENCE LINE
PTF = PINCH TOP FOUND	° = DEGREES
HPF = HOLLOW PIN FOUND	' = MINUTES
S = SOUTH	" = SECONDS
N = NORTH	R-O-W = RIGHT-OF-WAY
	P.B./PG. = PLAT BOOK/PAGE
	CMF = CONCRETE MONUMENT FOUND

DRAWN BY TPH	APPROVED BY TPH
CREW CHIEF ZDH	DATE 5/3/2024
SCALE 1" = 30'	
PROJECT NUMBER 24-062	SHEET NUMBER 01

BOUNDARY AND TOPOGRAPHIC SURVEY
 13974 HWY 231/421 N
 HAZEL GREEN, AL. 35750

SECTION 30, TOWNSHIP 1 SOUTH, RANGE 1 EAST OF THE HUNTSVILLE MERIDIAN, MADISON COUNTY, ALABAMA.

MOUNTAINVIEW CONSTRUCTION
 13974 HWY 231/431 N
 HAZELGREEN, AL. 35750
 1-(256)-692-0809

J.W. KENNEDY AND ASSOCIATES, P.C.
 2835 HUNTSVILLE HIGHWAY,
 FAYETTEVILLE, TN. 37334
 TELEPHONE: (931) 307-1066

REVISIONS			
NO.	DESCRIPTION	DATE	BY



THIS DRAWING AND ALL DETAILS SHOWN ON IT ARE THE PROPERTY OF J.W. KENNEDY, LAND SURVEYOR, AND ARE CREATED FOR THIS ASSIGNMENT ONLY. DRAWINGS AND DETAILS ARE NOT TO BE USED FOR OTHER PROJECTS WITHOUT THE WRITTEN CONSENT OF J.W. KENNEDY, LAND SURVEYOR.