



OFFICE/RETAIL CONDOS FOR SALE

124 Court Street, Bay St. Louis, MS 39520

TIM CARLSON • PRINCIPAL
OFFICE: 228.276.2700
MOBILE: 228.547.0707
tcarlson@southeastcre.com

MONTE LUFFEY • PRINCIPAL
OFFICE: 228.276.2700
MOBILE: 228.547.1953
mluffey@southeastcre.com



PROPERTY DESCRIPTION

Introducing a prime investment opportunity! Located at 124 Court Street in Bay St. Louis, MS. Three versatile units, will offer a range of office and commercial needs. The units can be customized for the tenants. Situated adjacent to a city parking garage, the property provides convenient access and ample parking for tenants and clients. With close proximity to various amenities, this property presents an exceptional opportunity for potential users. Additionally, the property is situated in Flood Zone X, providing peace of mind. Don't miss out on the added perk of golf cart storage, making it a unique and versatile space for businesses.



PROPERTY HIGHLIGHTS

- 3 Units Available
- Adjacent to city parking garage
- Close proximity to various amenities
- Situated in Flood Zone X
- Golf cart storage option

OFFERING SUMMARY

Unit 101: Corner Unit	1,327 SF - \$599,900
Unit 102:	752 SF - \$389,000
Unit 103: Corner Unit	846 SF - \$499,000

OFFICE/RETAIL BUILDING FOR SALE

PROPERTY SUMMARY





OFFICE/RETAIL CONDOS FOR SALE

124 Court Street, Bay St. Louis, MS 39520

TIM CARLSON • PRINCIPAL

OFFICE: 228.276.2700

MOBILE: 228.547.0707

tcarlson@southeastcre.com

MONTE LUFFEY • PRINCIPAL

OFFICE: 228.276.2700

MOBILE: 228.547.1953

mluffey@southeastcre.com



OFFICE/RETAIL BUILDING FOR SALE

ADDITIONAL PHOTOS





OFFICE/RETAIL CONDOS FOR SALE

124 Court Street, Bay St. Louis, MS 39520

TIM CARLSON • PRINCIPAL

OFFICE: 228.276.2700

MOBILE: 228.547.0707

tcarlson@southeastcre.com

MONTE LUFFEY • PRINCIPAL

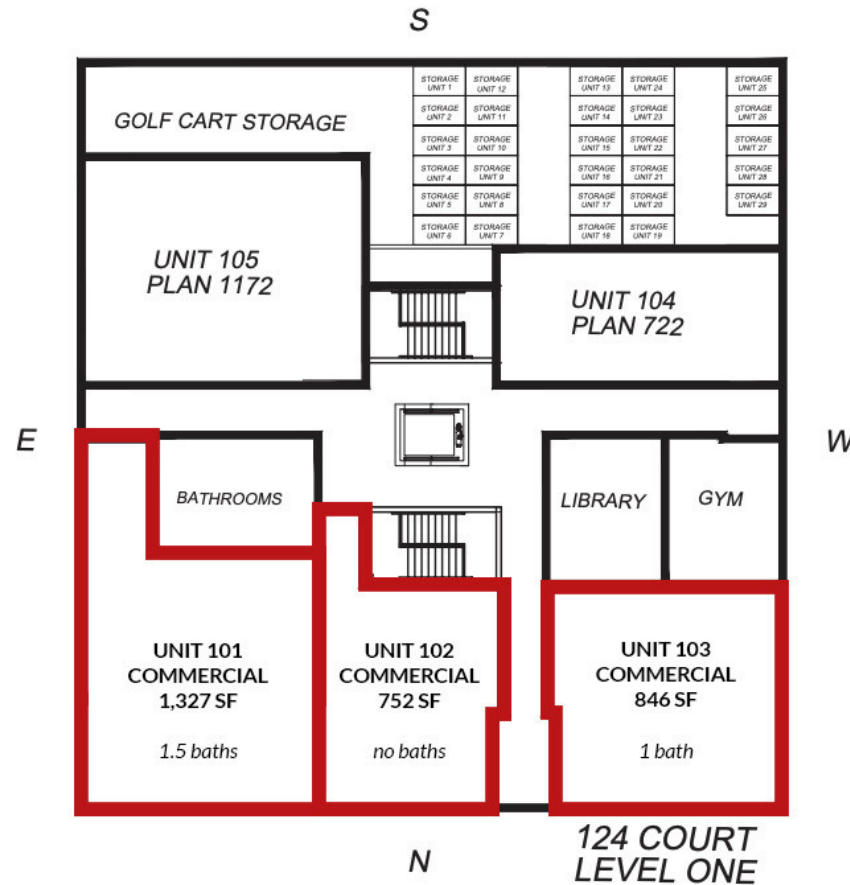
OFFICE: 228.276.2700

MOBILE: 228.547.1953

mluffey@southeastcre.com

124 COURT

LUXURY CONDOMINIUMS



OFFICE/RETAIL BUILDING FOR SALE

FIRST FLOOR SITE PLAN





OFFICE/RETAIL CONDOS FOR SALE

124 Court Street, Bay St. Louis, MS 39520

TIM CARLSON • PRINCIPAL

OFFICE: 228.276.2700

MOBILE: 228.547.0707

tcarlson@southeastcre.com

MONTÉ LUFFEY • PRINCIPAL

OFFICE: 228.276.2700

MOBILE: 228.547.1953

mluffey@southeastcre.com



OFFICE/RETAIL BUILDING FOR SALE

ADDITIONAL PHOTOS





OFFICE/RETAIL CONDOS FOR SALE

124 Court Street, Bay St. Louis, MS 39520

TIM CARLSON • PRINCIPAL

OFFICE: 228.276.2700

MOBILE: 228.547.0707

tcarlson@southeastcre.com

MONTE LUFFEY • PRINCIPAL

OFFICE: 228.276.2700

MOBILE: 228.547.1953

mluffey@southeastcre.com



OFFICE/RETAIL BUILDING FOR SALE

AERIAL



SOUTHEAST
COMMERCIAL
REAL ESTATE

SOUTHEAST COMMERCIAL REAL ESTATE | 2310 19th Street Gulfport, MS 39501 | <https://southeastcre.com>





OFFICE/RETAIL CONDOS FOR SALE

124 Court Street, Bay St. Louis, MS 39520

TIM CARLSON • PRINCIPAL

OFFICE: 228.276.2700

MOBILE: 228.547.0707

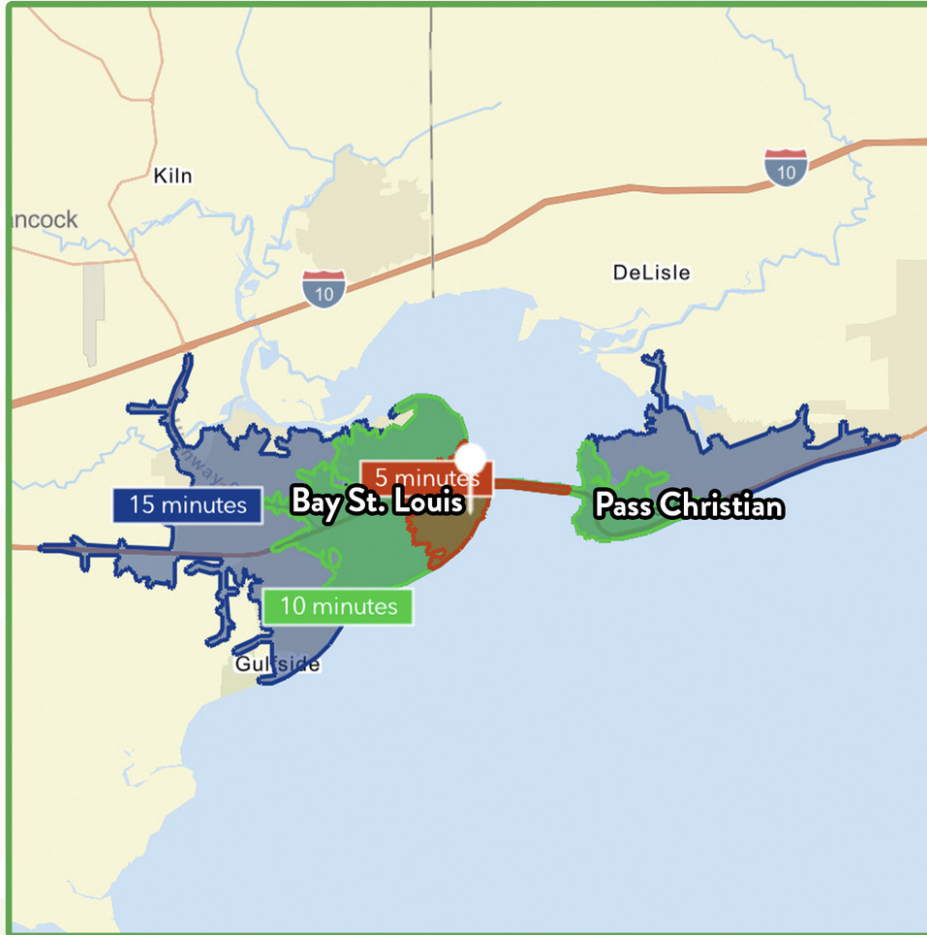
tcarlson@southeastcre.com

MONTE LUFFEY • PRINCIPAL

OFFICE: 228.276.2700

MOBILE: 228.547.1953

mluffey@southeastcre.com



\$90,463

Average Household Income
within 15 minutes of site.



45

Median Age
Within 15 minutes of site.



12,532

Number of housing units
within 15 minutes of site.

2025 Demographics	5 Minutes	10 Minutes	15 Minutes
Population	2,882	10,622	22,540
Average HH Income	\$72,340	\$89,840	\$90,463
2030 Projections	5 Minutes	10 Minutes	15 Minutes
Population	2,841	10,673	22,649
Average HH Income	\$78,842	\$97,750	\$99,574

Travel Time to Site

- 5 Minutes
- 10 Minutes
- 15 Minutes

OFFICE/RETAIL BUILDING FOR SALE

AREA DEMOGRAPHICS

