



Represented By:

Jonathan Douillard
First Vice President

O: 615.345.7233

jdouillard@charleshawkinsco.com

Kevin Irwin, SIOR
Senior Vice President

O: 615.345.7257

kirwin@charleshawkinsco.com

Tee Patterson, SIOR
First Vice President

O: 615.345.7229

tpatterson@charleshawkinsco.com

Charles Hawkins Co.

2920 Berry Hill Dr., Ste 100, Nashville, TN 37204

P: 615.256.3189 | www.charleshawkinsco.com

**CHARLES
HAWKINS CO.**
Commercial Real Estate Services



AIRPARK BUSINESS CENTER

CHARLES HAWKINS CO.
Commercial Real Estate Services

900 Airpark Center Drive, Suite 915, Nashville, TN

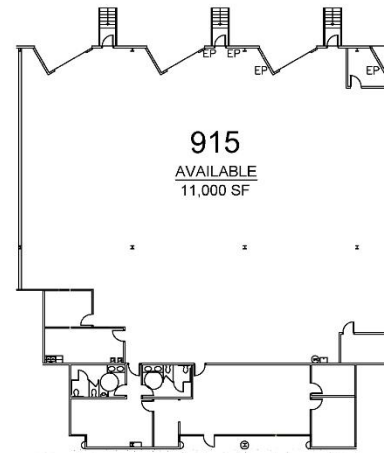
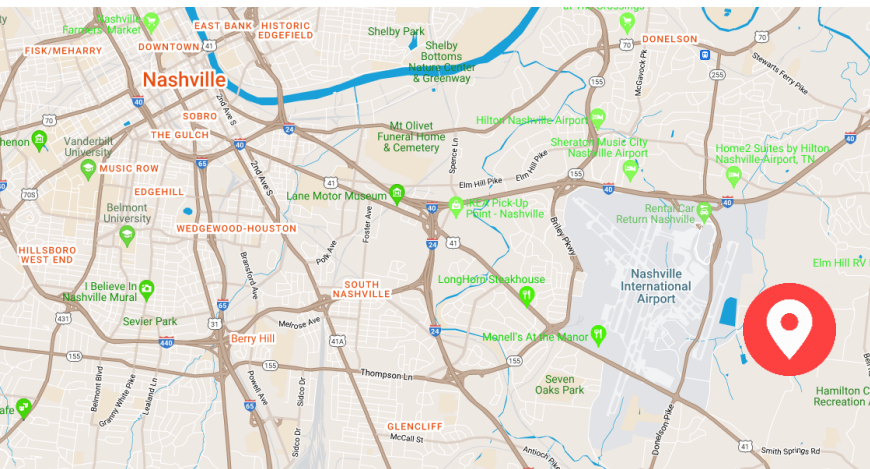
900 AIRPARK CENTER DR, SUITE 915

SPECIFICATIONS

- 2 Dock Doors
- 1 Drive-in Door
- 18' Clear Height
- Available: 1/1/2027

±11,000 SF AVAILABLE | FLEX SPACE

LEASE RATE: \$15.95/SF NNN
OPEX: \$3.01/SF



900 AIRPARK DRIVE
SUITE 915 - 11,000 SF
NASHVILLE, TENNESSEE

KEY PLAN:



AIRPARK
BUSINESS
CENTER



NASHVILLE, TN



Jonathan Douillard
First Vice President
O: 615.345.7233
[idouillard@charleshawkinsco.com](mailto:jdouillard@charleshawkinsco.com)

Kevin Irwin, SIOR
Senior Vice President
O: 615.345.7257
kirwin@charleshawkinsco.com

Tee Patterson, SIOR
First Vice President
O: 615.345.7229
tpatterson@charleshawkinsco.com

**CHARLES
HAWKINS CO.**
Commercial Real Estate Services



The Silverman Group is a privately owned and operated private equity and real estate development organization based in Basking Ridge, New Jersey. The firm owns and manages over 19,000,000 square feet of office, industrial, retail, and aviation properties as well 4,000 multi-family units throughout the United States. It has over 5,000,000 square feet of commercial space and 2,000 multi-family units currently under development in six states.