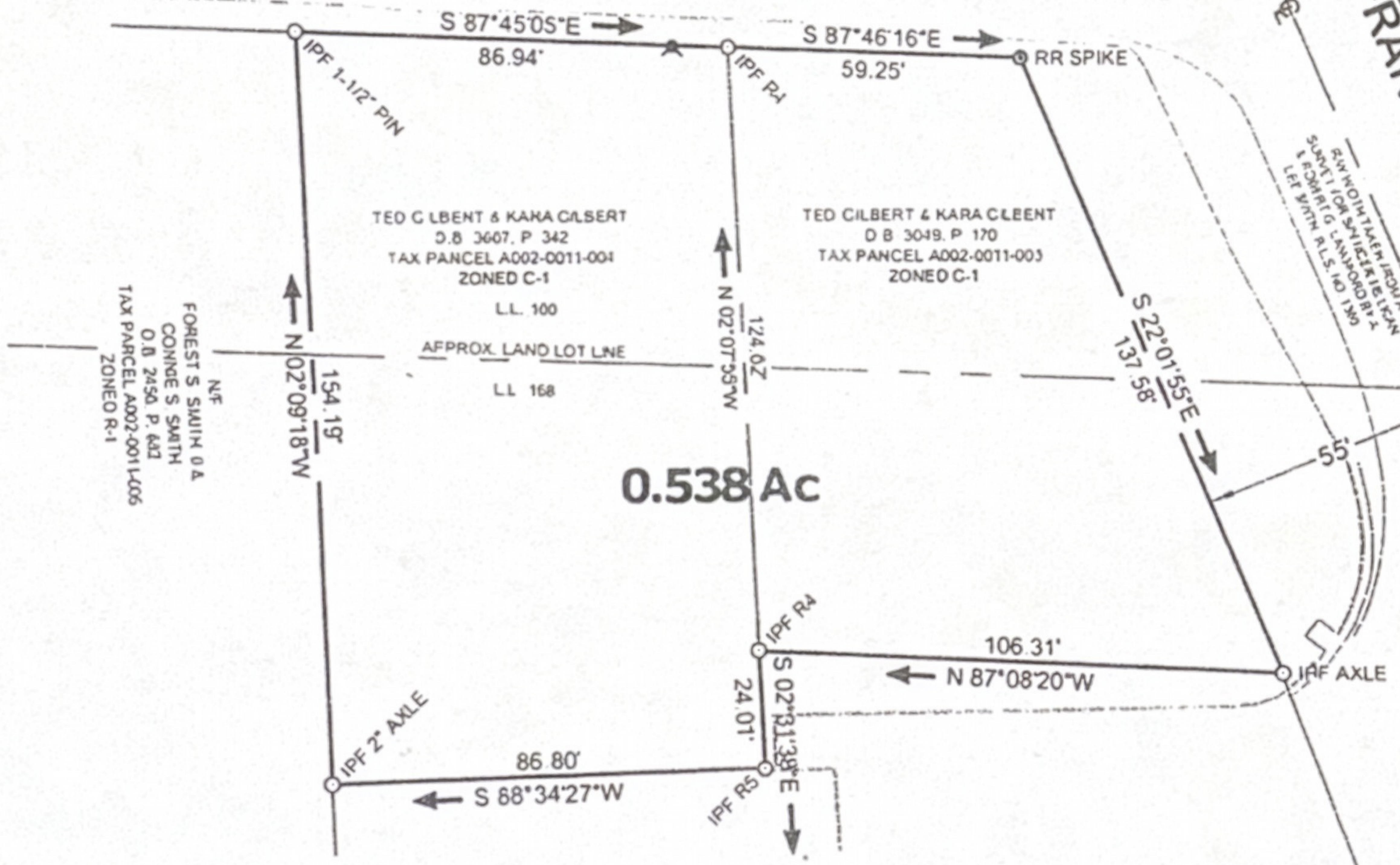


# ELM STREET - 30' R/W

(JOE FRANK HARRIS PARKWAY)  
U.S. HIGHWAY #41



TED GILBERT & KARA CLEERT  
O B 3607, P 342  
TAX PARCEL A002-0011-004  
ZONED C-1  
LL 100

TED GILBERT & KARA CLEERT  
O B 3049, P 170  
TAX PARCEL A002-0011-003  
ZONED C-1

FOREST S SMITH O A  
CONNIE S SMITH  
O B 2450, P. 643  
TAX PARCEL A002-0011-006  
ZONED R-1

147  
ERNEST J CANTKELL JR  
O B 2869, P. 278  
TAX PARCEL A002-0011-000  
ZONED R-1

N-F  
SOMANI PROPENTIES LLC  
O B 3629 P 410  
TAX PARCEL A002-0011-001  
ZONED C-1