

# FOR LEASE

LAKEVIEW MEDICAL OFFICE PARK



## PROPERTY DETAILS



- Building Size: 179,733 RSF
- 21,732 RSF For Lease
- Highly sought-after location off 91<sup>st</sup> & Meridian Street with easy access to US 31 & I-465
- Within 5 miles of several major hospitals, including IU Health North Hospital, Ascension St. Vincent Indianapolis Hospital, Ascension St. Vincent Carmel Hospital, and Franciscan Health Carmel
- Building features an interior courtyard
- Excellent visibility with signage opportunities



**Lakeview Medical Office Park**  
8902-9002 N Meridian St.  
Indianapolis, IN 46260



## CONTACTS

**Charles Yeo, CCIM, CPM**  
SVP, Brokerage  
317.288.9006  
[cyeo@cciin.com](mailto:cyeo@cciin.com)

**Jennifer McAllister**  
Brokerage Associate  
317.288.9022  
[jmcallister@cciin.com](mailto:jmcallister@cciin.com)



# FLOOR PLANS

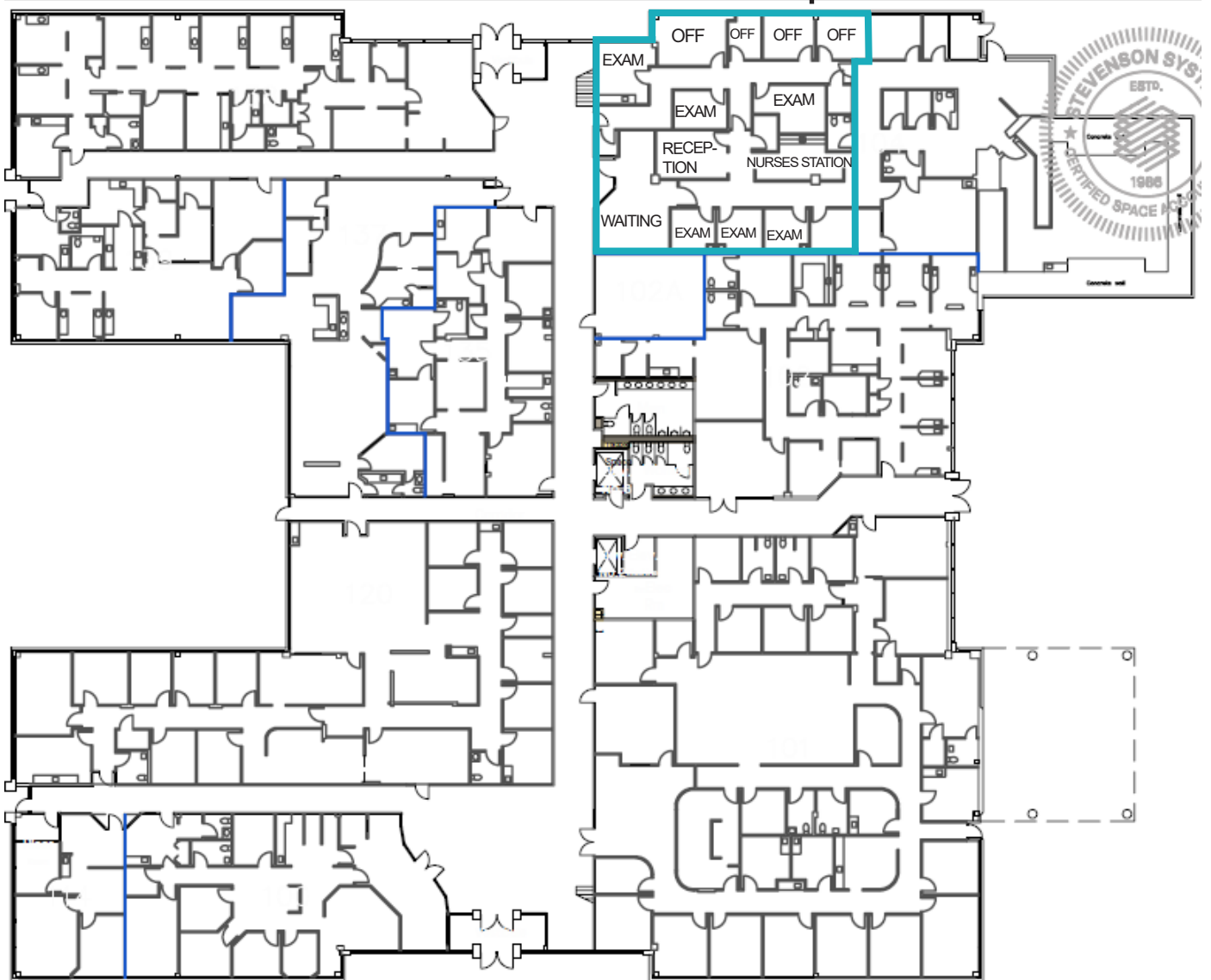
Lakeview Medical Office Park  
8902-9002 N Meridian St. Indianapolis, IN

8902 N Meridian | 1<sup>st</sup> Floor

Suite 8902-104

3,711 RSF

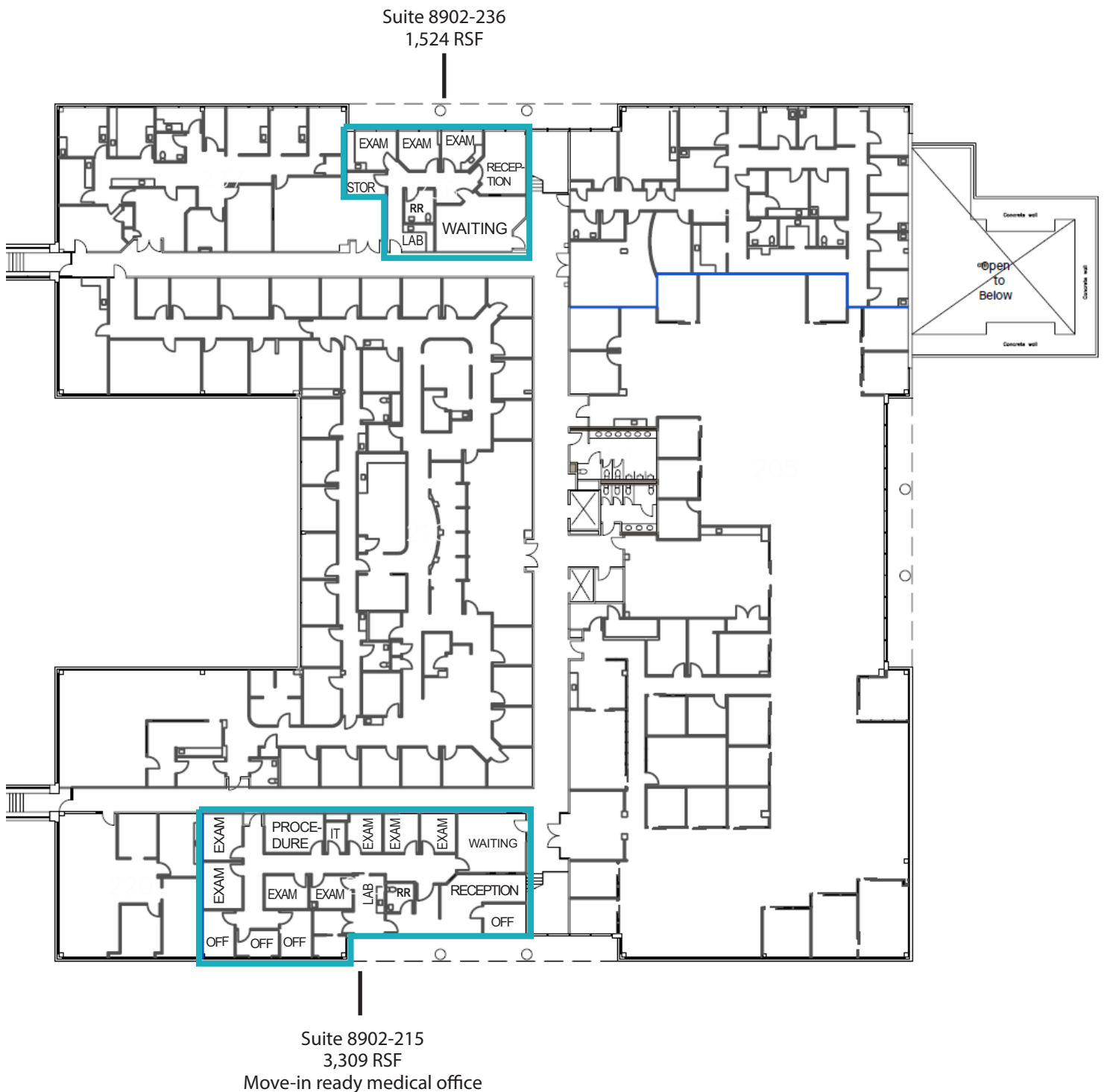
Former cancer center  
with linear accelerator



# FLOOR PLANS

Lakeview Medical Office Park  
8902-9002 N Meridian St. Indianapolis, IN

8902 N Meridian | 2<sup>nd</sup> Floor



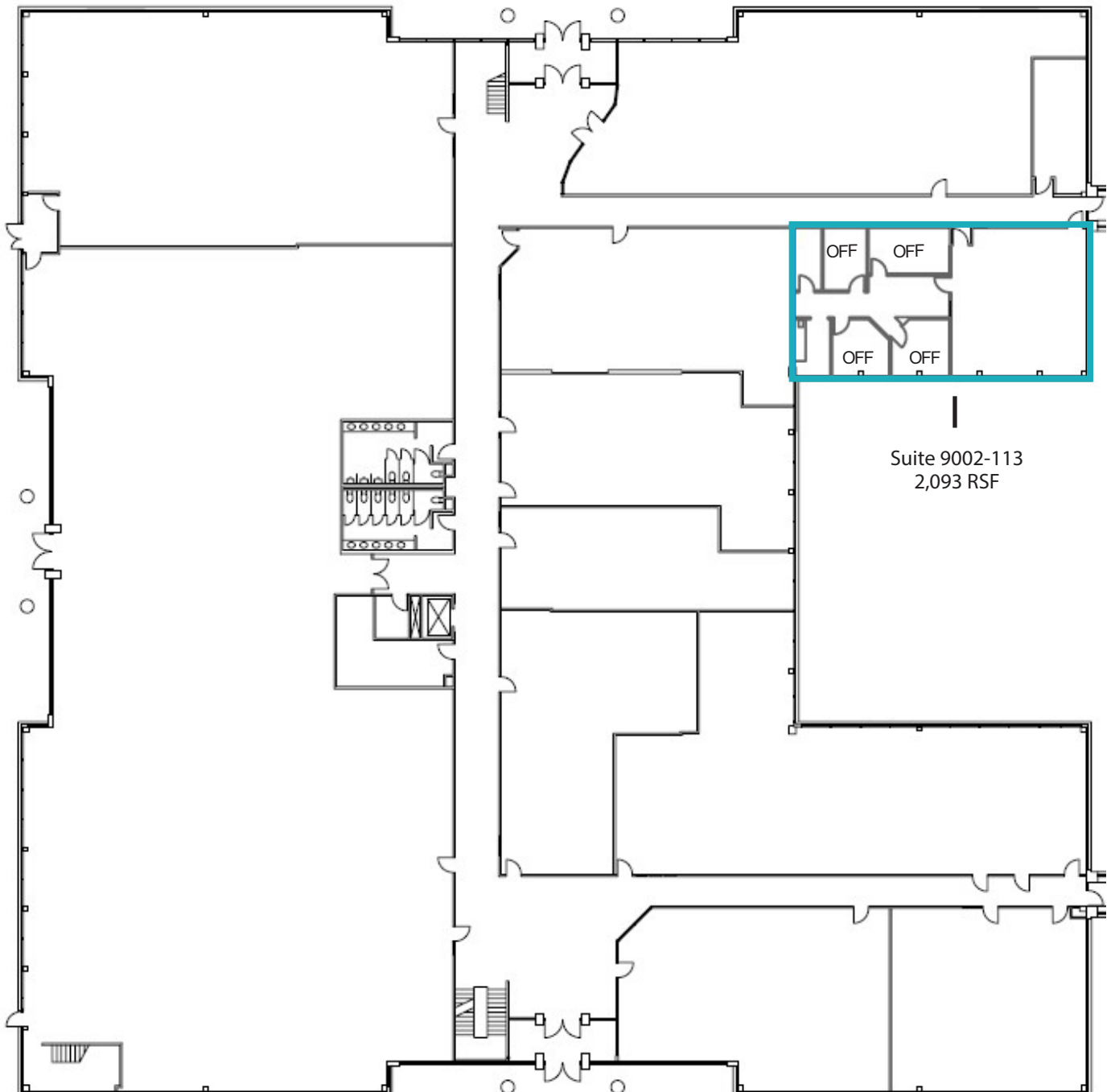


# FLOOR PLANS

Lakeview Medical Office Park  
8902-9002 N Meridian St. Indianapolis, IN



9002 N Meridian | 1<sup>st</sup> Floor



9002 N Meridian | 2<sup>nd</sup> Floor

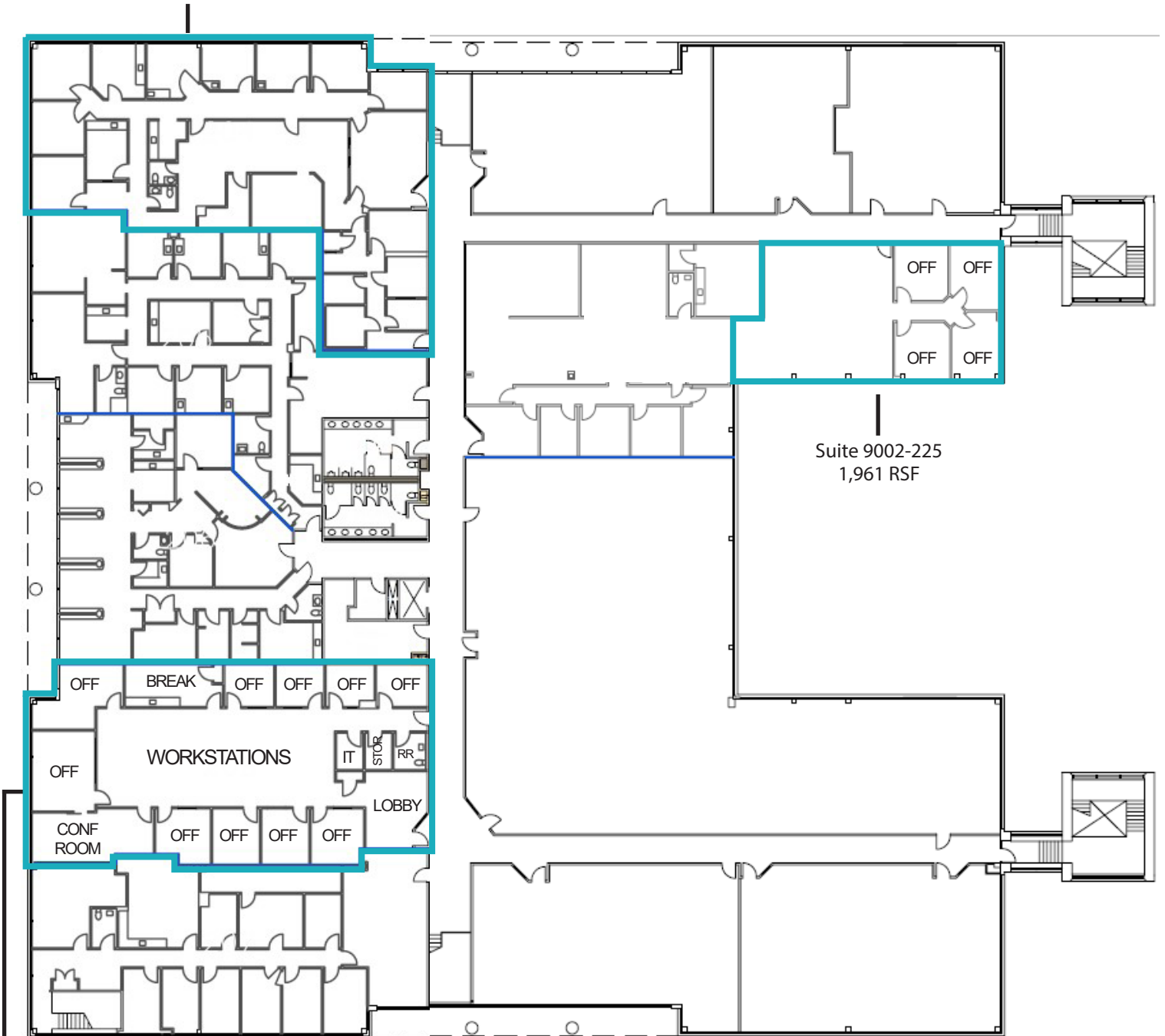
Suite 9002-204  
4,764 RSF

Suite 9002-225  
1,961 RSF

WORKSTATIONS

LOBBY

Suite 9002-209  
4,370 RSF







## DEMOGRAPHICS (5 - mile radius)



181,008

Population



38.7

Median Age



77,824

Households



\$82,092

Median  
Household  
Income



## CONTACTS

**Charles Yeo, CCIM, CPM**

SVP, Brokerage

317.288.9006

[cyeo@cciin.com](mailto:cyeo@cciin.com)

**Jennifer McAllister**

Brokerage Associate

317.288.9022

[jmcallister@cciin.com](mailto:jmcallister@cciin.com)



**CORNERSTONE**