



Colman Storage

225 S. Crummer Ave, Colman, SD 57017

PROPERTY HIGHLIGHTS

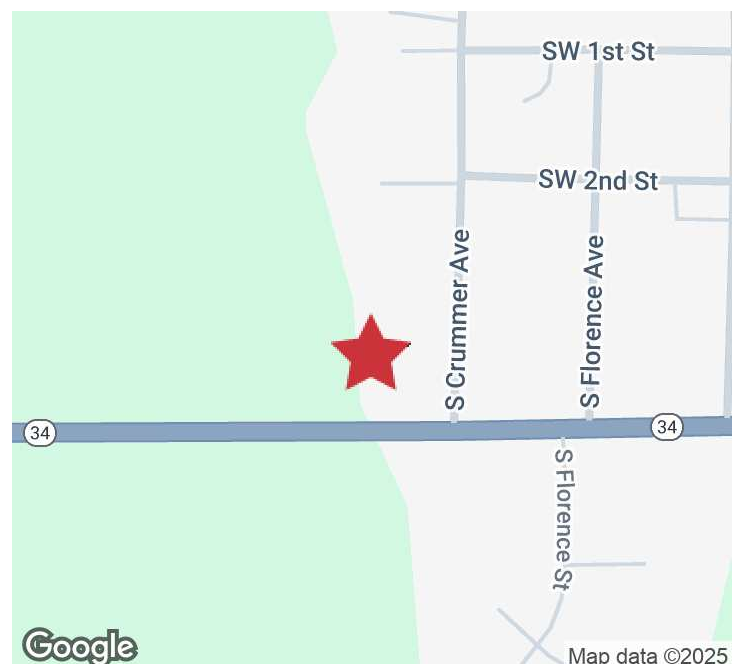
- Real Estate Taxes: \$3,531.36/year
- 12 Storage Units: Constructed in 2024, all wired for electricity
- Shop: 2,856 SF
- Building: 3,200 SF
- Land: 3.95 acres of vacant land
- Access: From Hwy 34 and South Crummer Ave

LOCATION DESCRIPTION

Located just off Hwy 34 and S Crummer Ave, this property sits right outside of Colman, SD, with quick and easy access to the highway.

Area neighbors include T&R Electric, Sioux Valley Energy, BankWest, Dollar General, Colman Transportation

Sale Price	\$800,000
Storage Units	TWELVE 15'X50'
Building and Shop Size	6,056 SF
Vacant Land	3.95 ACRES (172,062 SF)



BRODY ETRHEIM

Broker Associate

betrheim@naisiouxfalls.com

605.251.7625

2500 W. 49th St. Suite 100

Sioux Falls, SD 57105

605.357.7100

naisiouxfalls.com

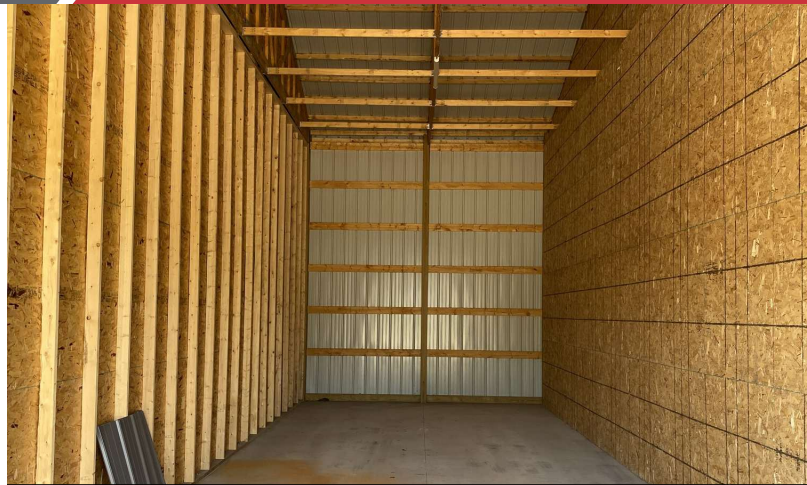
PHOTOS

225 S CRUMMER AVE
Colman, SD 57017

FOR SALE
Industrial/Land



12 - 15'x50' Storage Units



All units wired for electric



2,856 SF Shop



View from Hwy 34



3.95 Acres - Vacant Land



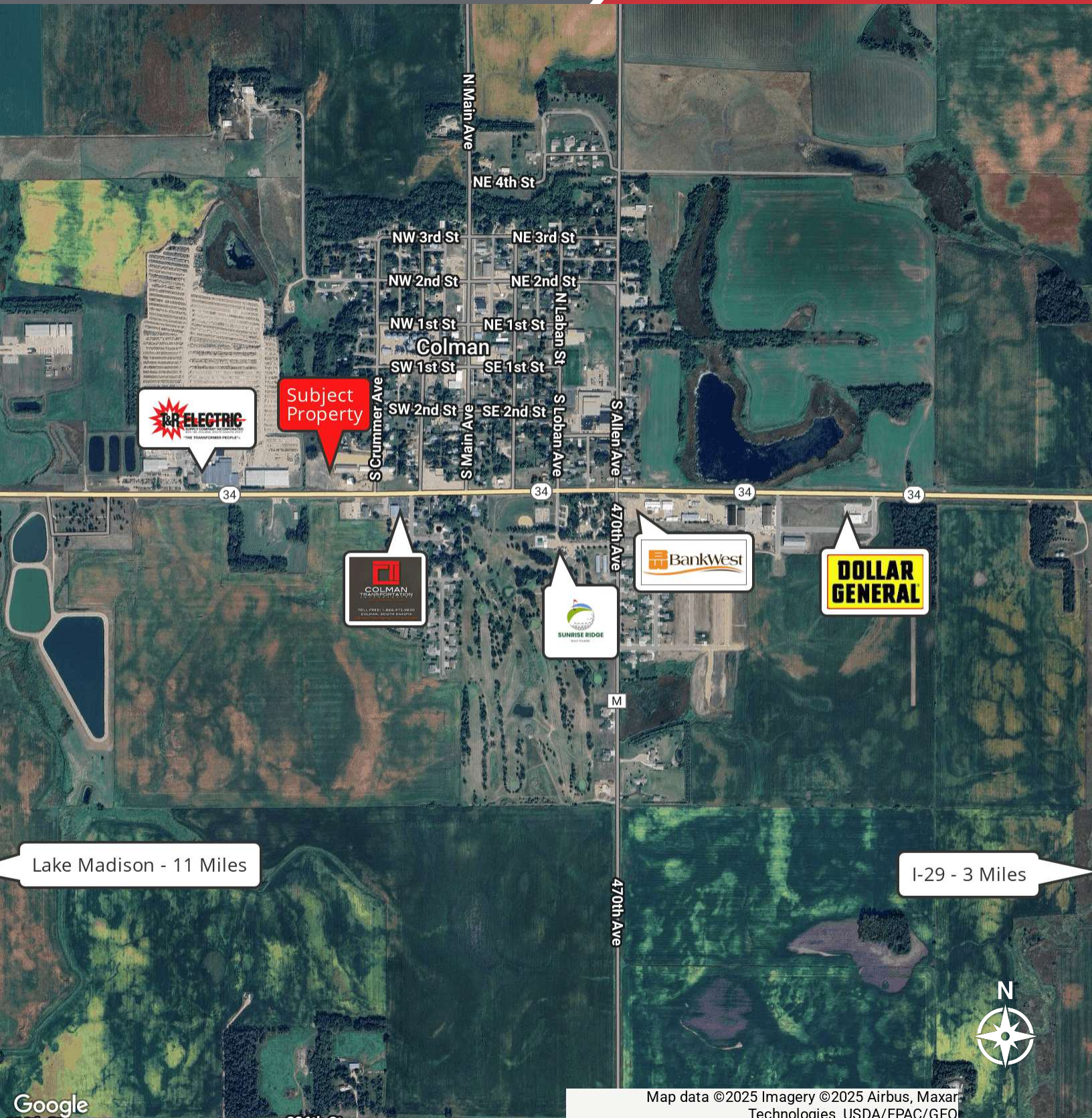
Vacant land next to shop

LOCATION MAP

225 S CRUMMER AVE
Colman, SD 57017

FOR SALE

Industrial/Land



Map data ©2025 Imagery ©2025 Airbus, Maxar
Technologies, USDA/FPAC/GEO

NA Sioux Falls

2500 W. 49th St. Suite 100
Sioux Falls, SD 57105
605.357.7100
naisiouxfalls.com