

For Sale

WEST STATE ROAD 426,
OVIEDO, FL 32765

1.00 ACRES AVAILABLE

West State Road 426

Oviedo, FL 32765



DESCRIPTION

1.00-acre parcel in between Winter Park and Oviedo with direct frontage access on state road 426.

PROPERTY OVERVIEW

AVAILABLE:	1.00 Acre Site
ASKING RATE:	\$500,000
ZONING:	R-1 FLU-MDR (up to 10 DU's/AC)
DELIVERY:	Raw Jurisdiction
JURISDICTION:	-

HIGHLIGHTS

- The site is along SR 426 which experiences 33,500 cars passing the site daily
- Easy access to major roadways, shopping, and sophisticated community services
- Situated near the Seminole County School District, known for its quality education.
- 9 miles to 417 expressway interchange

CO-TENANTS
INCLUDE:



FOR MORE INFORMATION, PLEASE CONTACT:

Rebekah Marrero
407.863.2968
Senior Associate
Rebekah@AtriumCommercial.com

JP Beaulieu, CCIM, CLS
407.863.2966
Principal
JP@AtriumCommercial.com

ATRIUM | COMMERCIAL
REAL ESTATE

ATRIUMCOMMERCIAL.COM

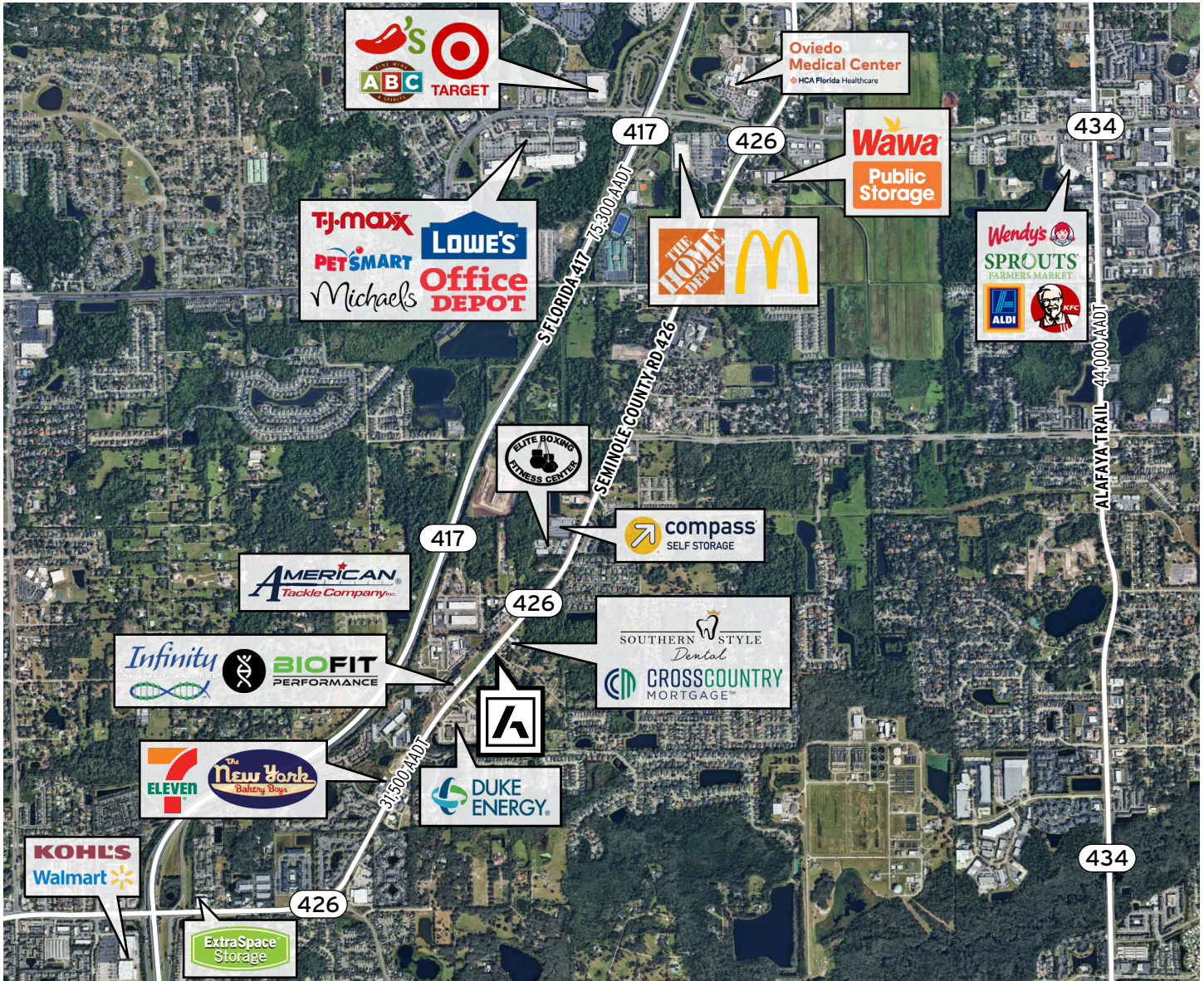
The information contained herein has been provided by sources believed to be reliable, however Atrium Commercial Real Estate makes no representation, expressed or implied, as to its accuracy and said information is subject to errors, omissions, or changes.



1.00-ACRE PARCEL FOR SALE

WEST STATE ROAD 426, OVIEDO, FL 32765

KEY POINTS MAP



75,300 AADT
Florida 417

31,500 AADT
Seminole County Rd 426

FOR MORE INFORMATION, PLEASE CONTACT:

Rebekah Marrero
407.863.2968
Senior Associate
Rebekah@AtriumCommercial.com

JP Beaulieu, CCIM, CLS
407.863.2966
Principal
JP@AtriumCommercial.com

ATRIUM | COMMERCIAL
REAL ESTATE

ATRIUMCOMMERCIAL.COM

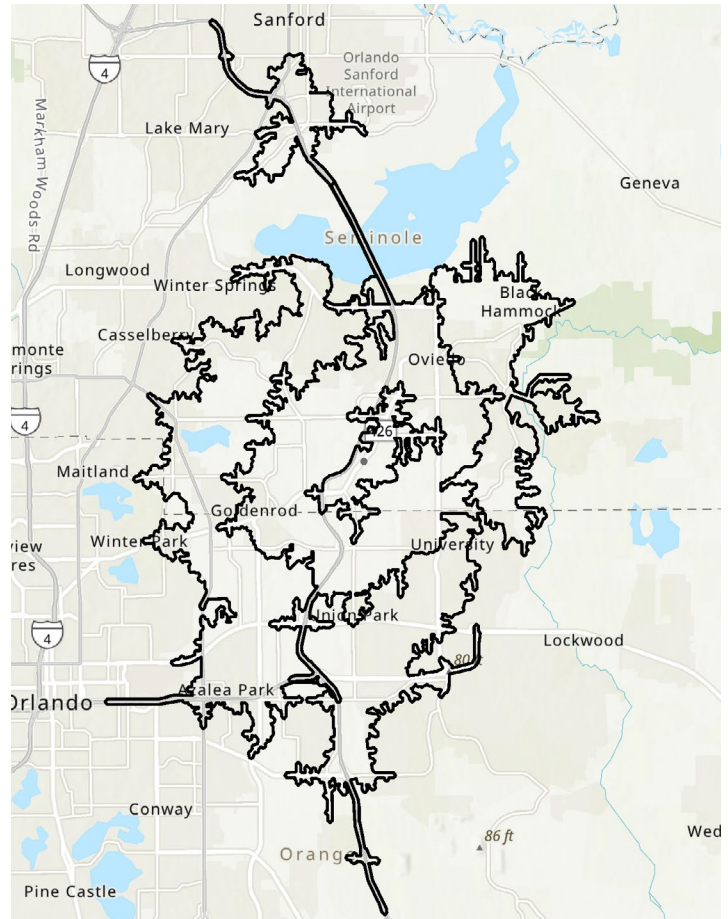
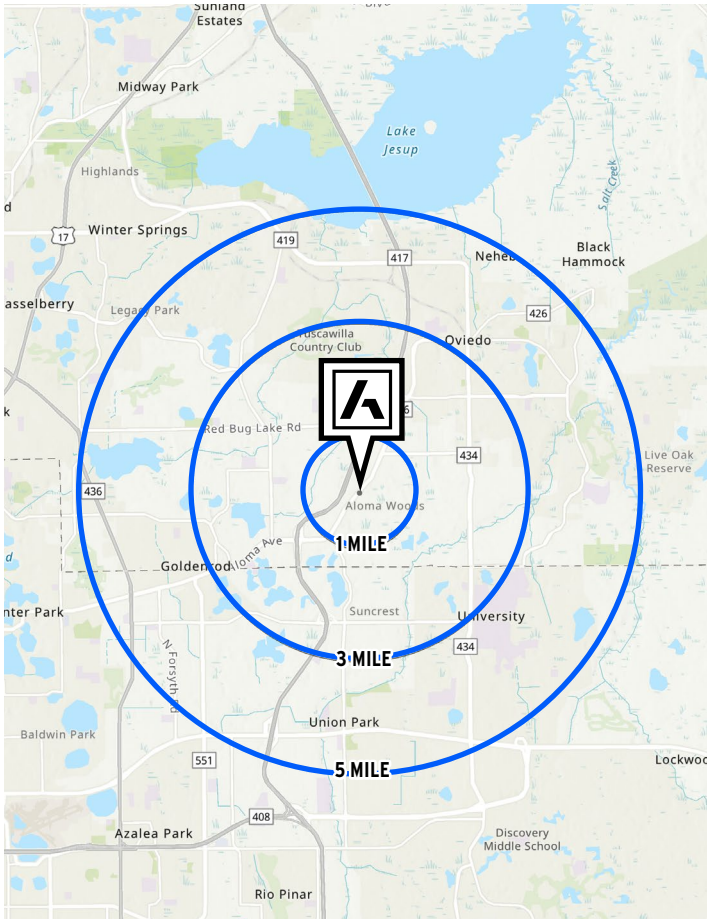
The information contained herein has been provided by sources believed to be reliable, however Atrium Commercial Real Estate makes no representation, expressed or implied, as to its accuracy and said information is subject to errors, omissions, or changes.



1.00-ACRE PARCEL FOR SALE

WEST STATE ROAD 426, OVIEDO, FL 32765

DEMOGRAPHICS & DRIVE TIME INFO



1-MILE



8,726
ESTIMATED POPULATION



3,303
HOUSEHOLDS



292
TOTAL EMPLOYEES



\$126,453
AVERAGE HOUSEHOLD INCOME

3-MILES



76,752
ESTIMATED POPULATION



28,227
HOUSEHOLDS



3,238
TOTAL EMPLOYEES



\$119,822
AVERAGE HOUSEHOLD INCOME

5-MILES



245,896
ESTIMATED POPULATION



87,828
HOUSEHOLDS



8,175
TOTAL EMPLOYEES



\$110,720
AVERAGE HOUSEHOLD INCOME

FOR MORE INFORMATION, PLEASE CONTACT:

Rebekah Marrero
407.863.2968
Senior Associate
Rebekah@AtriumCommercial.com

JP Beaulieu, CCIM, CLS
407.863.2966
Principal
JP@AtriumCommercial.com

ATRIUM | COMMERCIAL
REAL ESTATE

ATRIUMCOMMERCIAL.COM

The information contained herein has been provided by sources believed to be reliable, however Atrium Commercial Real Estate makes no representation, expressed or implied, as to its accuracy and said information is subject to errors, omissions, or changes.