

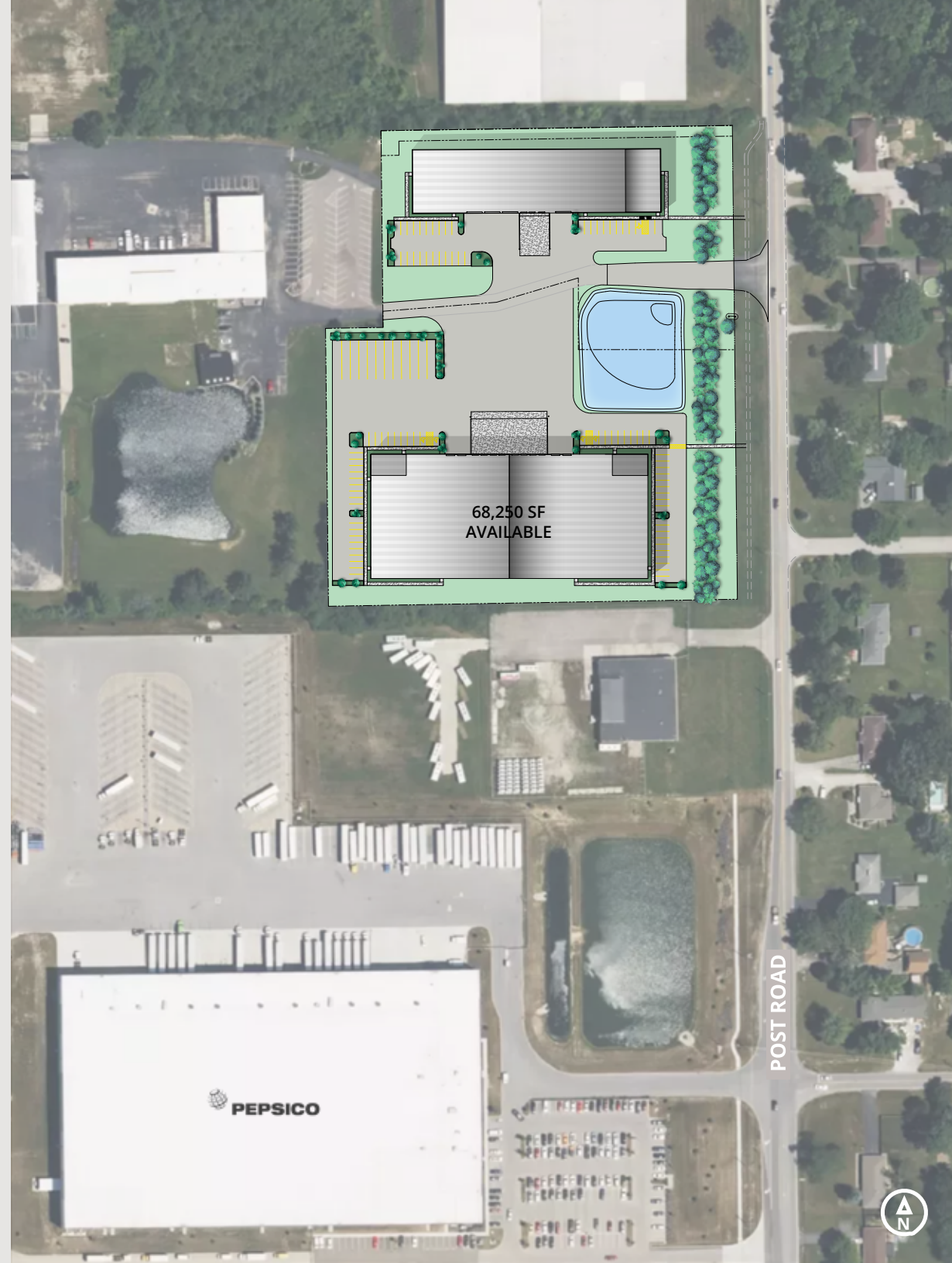
AVISON YOUNG

Wolter Industrial Park

910 S Post Rd
Indianapolis, IN

Shell building with easy access to I-465

- 34,125 - 68,250 sf available
- Available for occupancy August 2025
- 2.3 miles to I-465 and 3 miles to I-70 and I-74
- Superb access to strong labor force
- Fenced and secure industrial park
- Easy access to numerous dining and retail amenities along Washington Street/US 40 corridor
- Under 30 minutes to Indianapolis International Airport and FedEx Express World Hub





Building size	68,250 sf
Available	68,250 sf
Divisible to	34,125 sf
Office sf	2 - 1,500 sf pods
Clear height	24'
Column spacing	58' x 25'
Dock doors	8 (9' x 10')
Drive-in doors	4 (12' x 14')
Power specifications	2 - 400 amp, 120/208 volt, 3-phase panels
Lighting system	LED with motion sensors
Fire protection system	Wet with K Heads and a storage height of 20' for Class 1-4 commodities
Floors	6" unreinforced
Roof	Standing seam
Zoning	I-2
Car parking	63
Trailer parking	12
Tax abatement	7-years



Inside **INDIANA**

2025

Compiled by the Indiana Economic
Development Corporation

Workers Comp Premium Rate

State of Oregon, 2022

3rd

13th

6th

5th

45th

3rd

5th

23rd

26th

45th

Indiana

Ohio

Kentucky

Michigan

Illinois

Property Tax Index Rank

The Tax Foundation, 2024

Best State Tax Climate Index

The Tax Foundation, 2024

Michigan 11th

Kentucky 18th

Ohio 36th

Illinois 37th

10th

2nd

Best State to Start a Business

Forbes, 2024

6th Ohio

24th Kentucky

28th Illinois

40th Michigan

Cost of Doing Business

CNBC America's Top States
for Business, 2023

5th

6th

4th

10th

AAA

AAA

AA

A+

A-

Indiana

Ohio

Michigan

Kentucky

Illinois

Bond Rating

Standard & Poor's Global, 2024

5th

State Infrastructure

CNBC State Infrastructure Ranking, 2023

Illinois

2nd

Ohio

6th

Michigan

26th

Kentucky

29th

Get more
information

Steve Schaub, SIOR
Executive Vice President
+1 317 210 8807

Evan Young
Associate
+1 317 210 8804

**AVISON
YOUNG**