

FOR LEASE

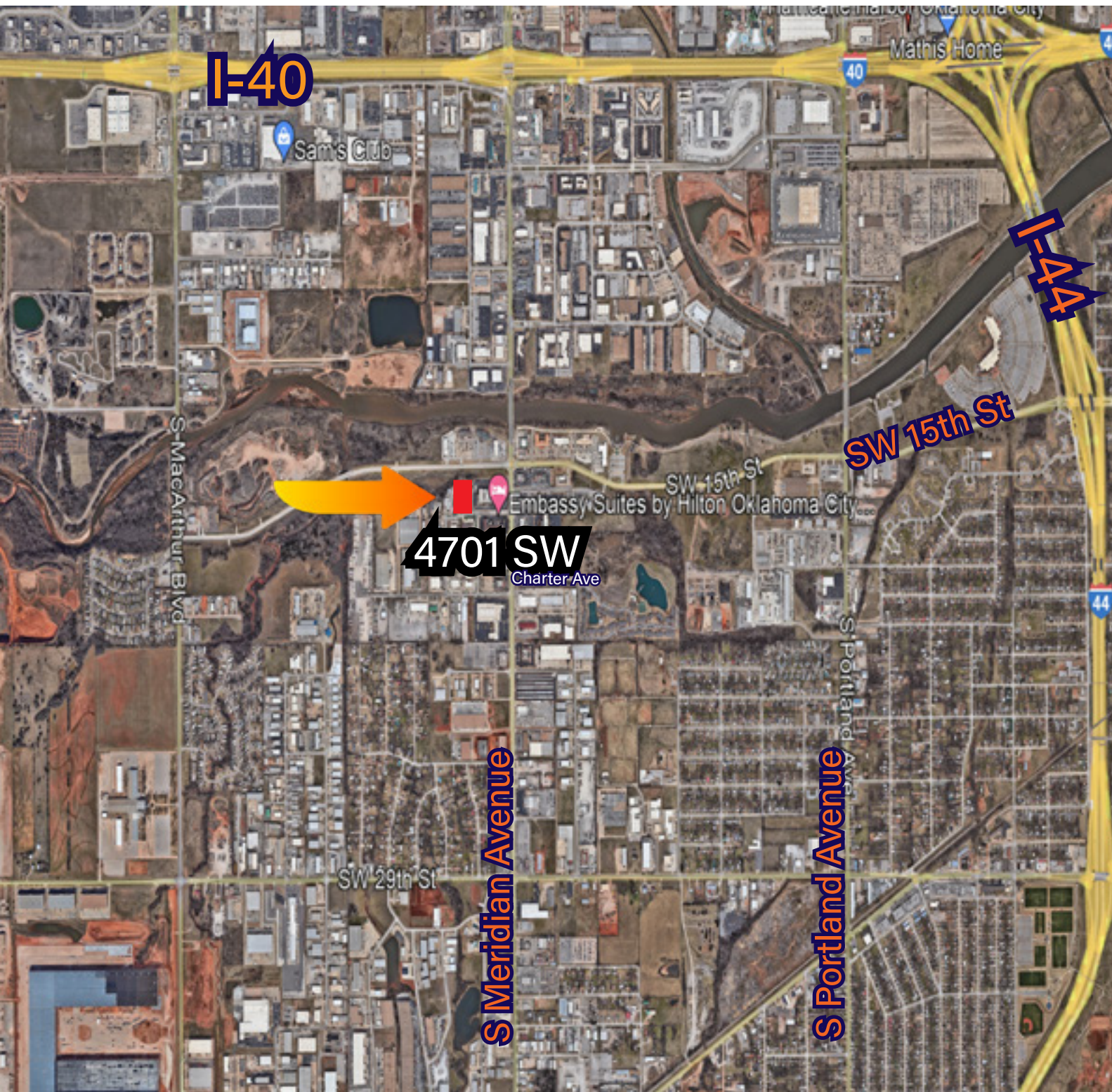
4701 SW 18TH STREET , OKLAHOMA CITY, OK 73128



HORIZON
COMMERCIAL REAL ESTATE

David Portman, CCIM
Principal
405.850.1107







301 Lilac Drive, Ste 200
Edmond, OK 73034
www.horizoncreek.com



PROPERTY INFORMATION

\$9.25 /SF + NNN

PROPERTY TYPE	WAREHOUSE / OFFICE
AVAILABLE SF	8,464 SF
ZONING	I-2
CLEAR HEIGHT	16'
YEAR BUILT	1980

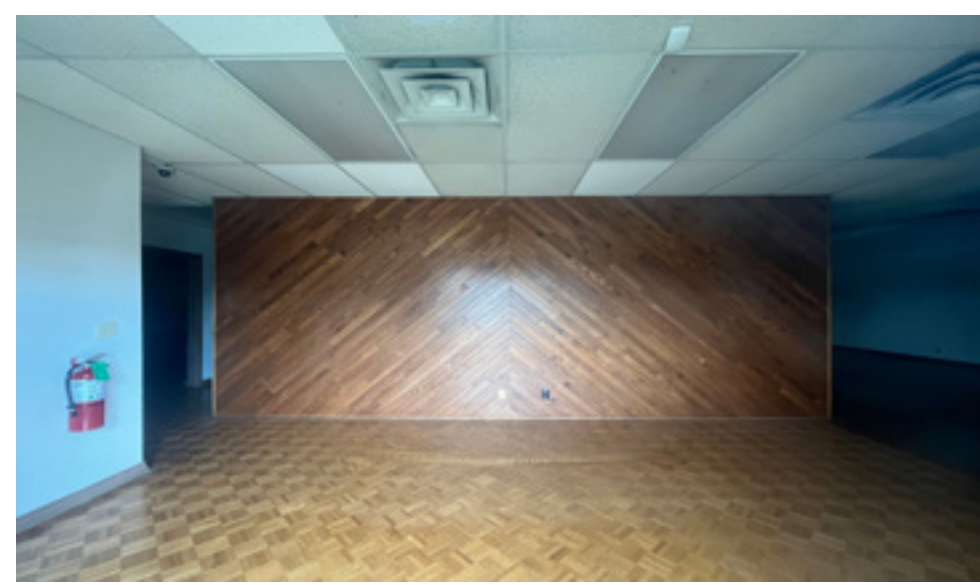
-  WAREHOUSE WITH ATTACHED 1,300 SF OFFICE SPACE
-  FEATURES TWO – 14'X14' OVERHEAD GRADE LEVEL DOORS
-  SITE INCLUDES FENCE AND PAVED OUTSIDE STORAGE YARD
-  ZONING ALLOWS FOR LIGHT ASSEMBLY AND MANUFACTURING WITH OUTSIDE STORAGE
-  LOCATED IN THE SOUTHWEST SUBMARKET OF OKLAHOMA CITY
-  EXCELLENT ACCESS TO I-40 & I-44

ALTHOUGH THE INFORMATION HAS BEEN OBTAINED FROM TRUSTWORTHY SOURCES, HORIZON CRE MAKES NO GUARANTEES, ASSURANCES, OR WARRANTIES ABOUT THE COMPLETENESS OR ACCURACY OF THE DATA. THIS PROPERTY IS BEING PRESENTED WITH THE POSSIBILITY OF ERRORS AND OMISSIONS. MODIFICATIONS MAY OCCUR THAT ALTER THE FACTS OF THIS PRESENTATION WITHOUT NOTICE.



David Portman, CCIM
Principal
405.850.1107

301 Lilac Drive, Ste 200
Edmond, OK 73034
www.horizoncreok.com



HORIZON
COMMERCIAL REAL ESTATE

David Portman, CCIM
Principal
405.850.1107

301 Lilac Drive, Ste 200
Edmond, OK 73034
www.horizoncreek.com



HORIZON
COMMERCIAL REAL ESTATE

David Portman, CCIM
Principal
405.850.1107

301 Lilac Drive, Ste 200
Edmond, OK 73034
www.horizoncreek.com