

# PROPERTY FEATURES

# FOR LEASE

## 6009 JURUPA AVE. RIVERSIDE, CA 92504

### STRUCTURE SIZE:

±16,000 sq.ft.

### LOT SIZE:

±22,651 sq.ft.

### PARCEL

APN: 187-250-011

### ZONING

Industrial (I) per the City of Riverside, CA

### PROPERTY HIGHLIGHTS

- ±1,200 sq.ft. Office Space
- 2 - Ground Level Doors
- Private Yard
- ±400 AMPS (verify)
- Frontage on Jurupa Ave.
- Centrally Located Between 91, 60 & I-15 Freeways



**Rene Ramos, Jr.**  
909.980.6868

Rene.Ramos@kwcommercial.com  
CalDRE Lic. #01836872

**Jacob B. Bernardy**  
909.935.0935

Jacob.Bernardy@kwcommercial.com  
CalDRE Lic. #02039512

**Robert Bagley III**  
909.935.0938

Robert.Bagley@kwcommercial.com  
CalDRE Lic. #02131874

**Daniel W. Richards**  
909.980.6868

Daniel.Richards@kwcommercial.com  
CalDRE Lic. #00803221



CAL DRE # 02120868

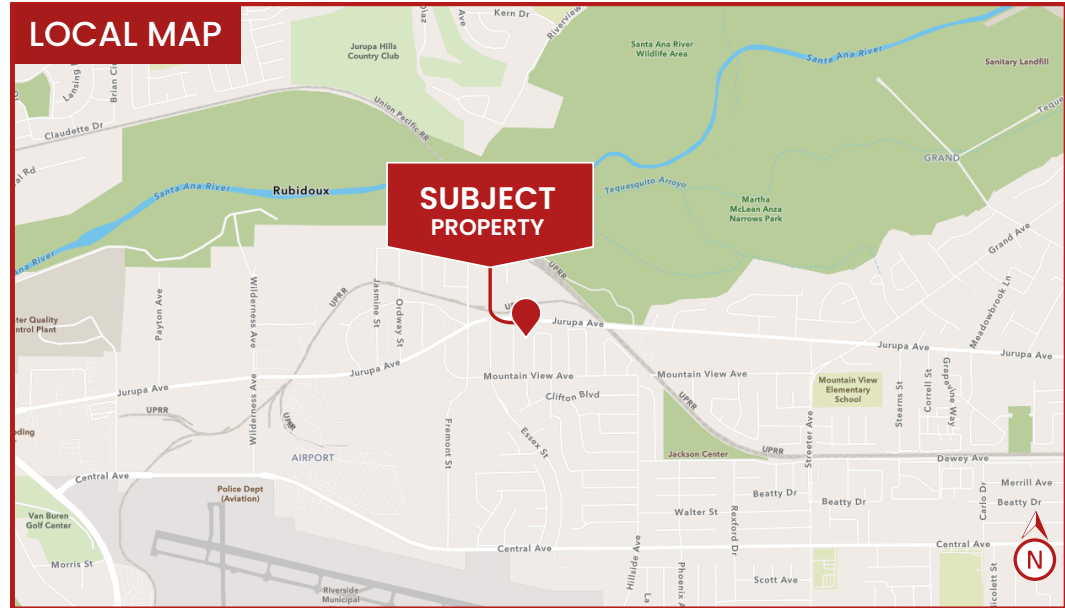
KW COMMERCIAL  
3595-1 Inland Empire Blvd.  
Suite 1250  
Ontario, CA 91764  
909.980.6868

WE OBTAINED THE INFORMATION ABOVE FROM SOURCES WE BELIEVE TO BE RELIABLE. HOWEVER, WE HAVE NOT VERIFIED ITS ACCURACY AND MAKE NO GUARANTEE, WARRANTY, OR REPRESENTATION ABOUT IT. IT IS SUBMITTED SUBJECT TO THE POSSIBILITY OF ERRORS, OMISSIONS, CHANGE OF PRICE, RENTAL OR OTHER CONDITIONS, PRIOR SALE, LEASE OR FINANCING, OR WITHDRAWAL WITHOUT NOTICE. WE INCLUDE PROJECTIONS, OPINIONS, ASSUMPTIONS OR ESTIMATES FOR EXAMPLE ONLY, AND THEY MAY NOT REPRESENT CURRENT OR FUTURE PERFORMANCE OF THE PROPERTY. YOU AND YOUR TAX AND LEGAL ADVISORS SHOULD CONDUCT YOUR OWN INVESTIGATION OF THE PROPERTY AND TRANSACTION.

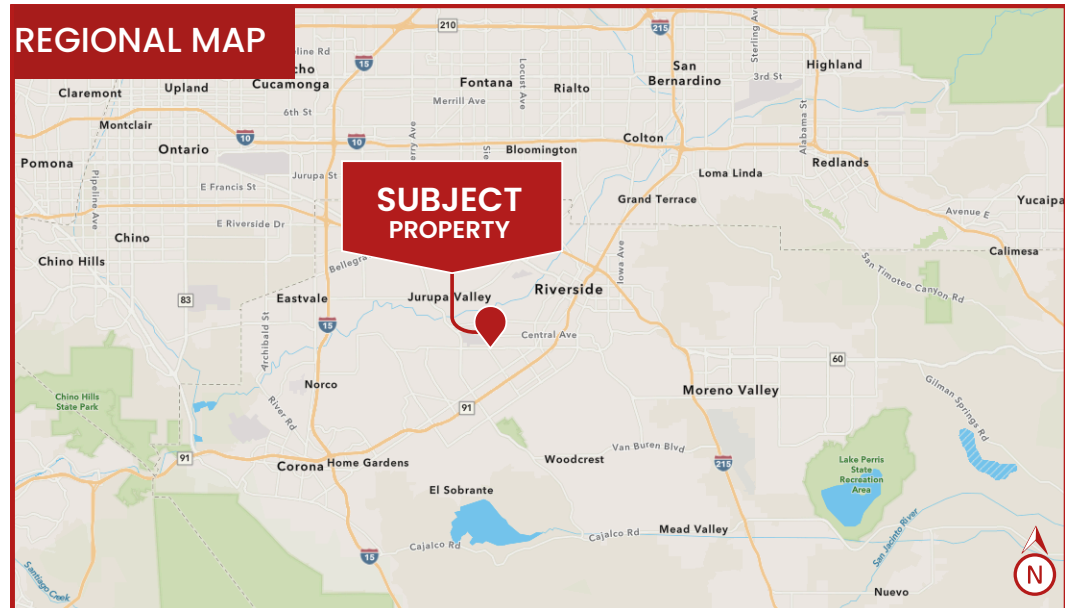
## AERIAL MAP



## LOCAL MAP



## REGIONAL MAP



Rene Ramos, Jr.  
909.980.6868  
Rene.Ramos@kwcommercial.com  
CalDRE Lic. #01836872

Jacob B. Bernardy  
909.935.0935  
Jacob.Bernardy@kwcommercial.com  
CalDRE Lic. #02039512

Robert D. Bagley III  
909.935.0938  
Robert.Bagley@kwcommercial.com  
CalDRE Lic. #02131874

Daniel W. Richards  
909.980.6868  
Daniel.Richards@kwcommercial.com  
CalDRE Lic. #00803221



**INLAND  
EMPIRE**

**CAL DRE # 02120868**



Rene Ramos, Jr.  
909.980.6868  
Rene.Ramos@kwcommercial.com  
CalDRE Lic. #01836872

Jacob B. Bernardy  
909.935.0935  
Jacob.Bernardy@kwcommercial.com  
CalDRE Lic. #02039512

Robert D. Bagley III  
909.935.0938  
Robert.Bagley@kwcommercial.com  
CalDRE Lic. #02131874

Daniel W. Richards  
909.980.6868  
Daniel.Richards@kwcommercial.com  
CalDRE Lic. #00803221



INLAND  
EMPIRE

CAL DRE # 02120868



Rene Ramos, Jr.  
909.980.6868  
Rene.Ramos@kwcommercial.com  
CalDRE Lic. #01836872

Jacob B. Bernardy  
909.935.0935  
Jacob.Bernardy@kwcommercial.com  
CalDRE Lic. #02039512

Robert D. Bagley III  
909.935.0938  
Robert.Bagley@kwcommercial.com  
CalDRE Lic. #02131874

Daniel W. Richards  
909.980.6868  
Daniel.Richards@kwcommercial.com  
CalDRE Lic. #00803221



INLAND  
EMPIRE

CAL DRE # 02120868