

The Midland Building

620-624

EAST 4TH STREET
TULSA, OK 74120

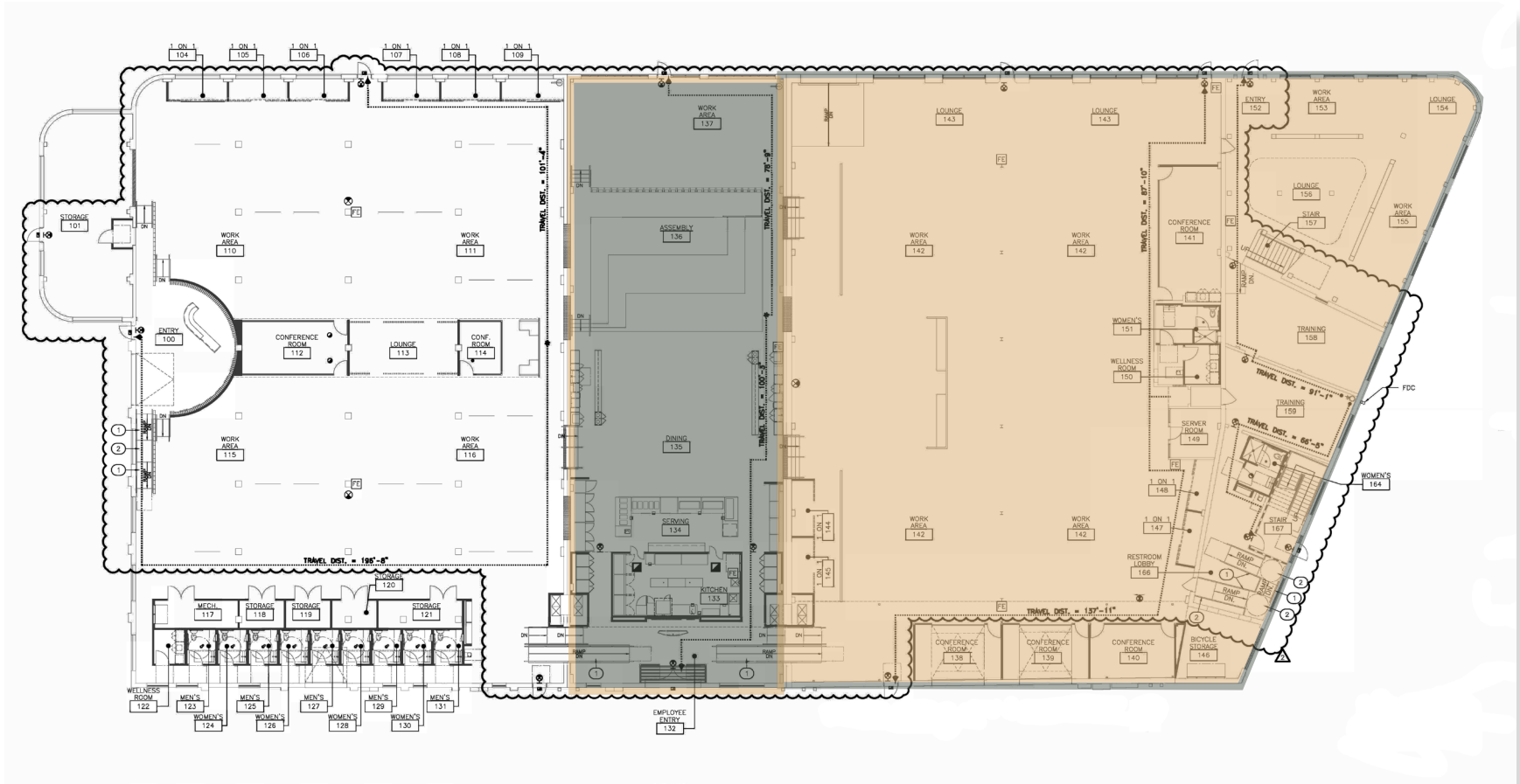


CBRE

Property Description

Plug & Play space available for sublease in the heart of the Tulsa Historic District, the Midland Building is a stunning century-old structure that beautifully blends historic charm with modern functionality. Retaining its original features, including a striking barrel vault ceiling and distinctive Oklahoma red clay bricks, this building exudes character. The spacious interior offers an open floor plan, perfect for fostering collaboration and creativity in a vibrant workspace. Experience the unique allure of the Midland Building, where history meets contemporary design. The Midland Building was highlighted in CBRE Tulsa's 2022 publication of Tulsa's Coolest Office Spaces.





The Midland Building features a vibrant common area, equipped with a commercial kitchen, a bustling marketplace, and expansive meeting and collaborative spaces designed to inspire teamwork and creativity.

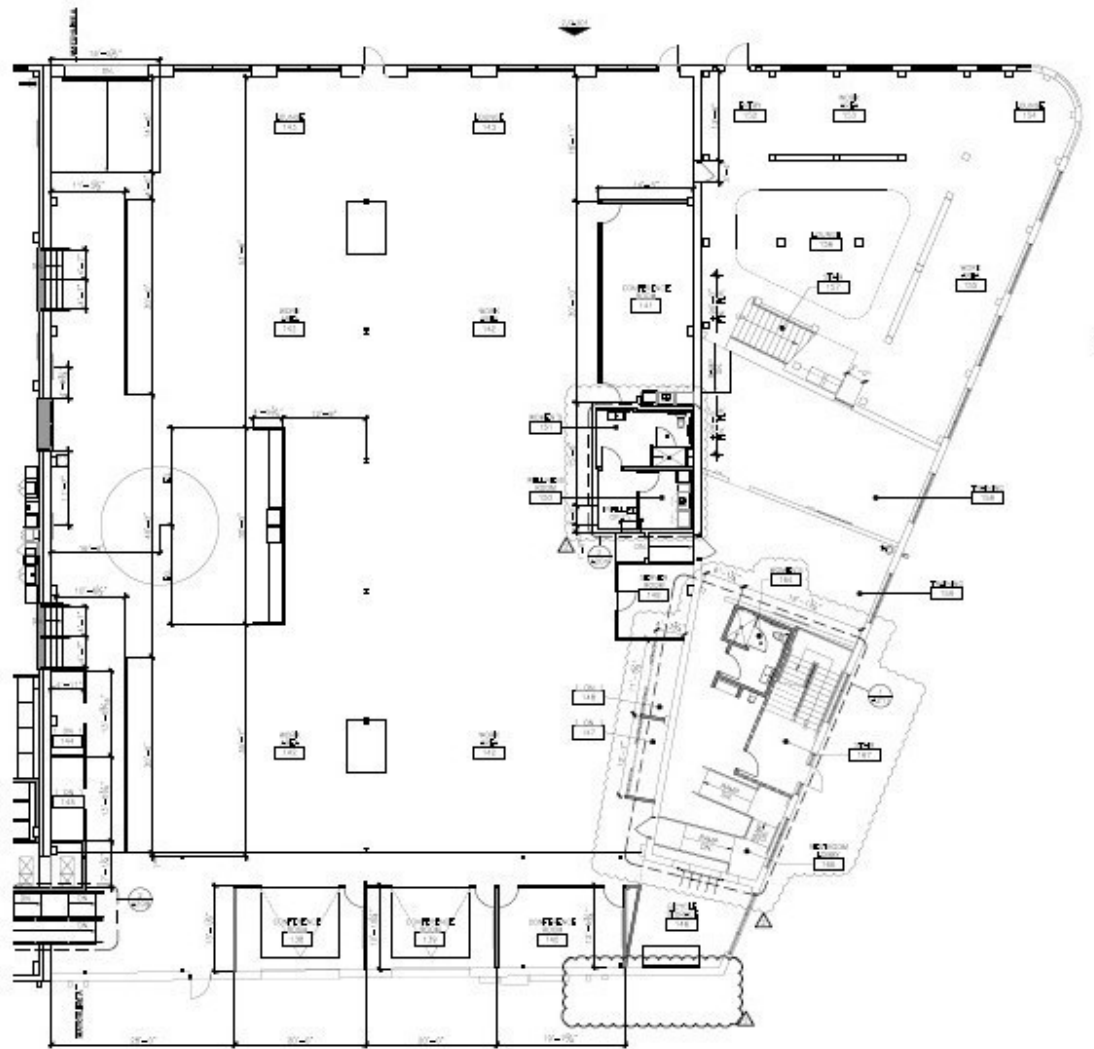
Available Plug & Play Space: 27,063 RSF*

* Tulsa County Assessor

PLUG & PLAY SPACE

- Available: 27,063 RSF*
- Plug & Play Space
- Open Concept Layout
- Dedicated Entrance
- Furniture Available
- Flexible Space Options up to the Entire Building

* Tulsa County Assessor



GATHERING PLACE



620-624
E 4TH STREET

BOK CENTER

TULSA PERFORMING ARTS CENTER

FASSLER HALL

MCNELLIES

GUTHRIE GREEN

ONEOK FIELD

RECONCILIATION PARK



620-624
E 4TH STREET

A R E A D E M O G R A P H I C S

DEMOGRAPHIC COMPREHENSIVE **1 MILE** **3 MILES** **5 MILES**

POPULATION

2024 Population	8,508	77,418	165,200
2029 Population - Projection	9,094	79,227	167,810

HOUSEHOLD INCOME

Average Household Income	\$75,985	\$87,107	\$83,277
--------------------------	----------	----------	----------

IDL TRAFFIC COUNTS

Highway 75	51,400 VPD
Broken Arrow Expressway	73,740 VPD
I-244	69,716 VPD

Leslie Kirkpatrick Cornell, MBA
Senior Associate
+1 918 557 2231
leslie.kirkpatrick@cbre.com

Carrie Claiborne
Senior Associate
+1 918 906 0224
carrie.claiborne@cbre.com

620-624

EAST 4TH STREET
TULSA, OK 74120

© 2024 CBRE, Inc. All rights reserved. This information has been obtained from sources believed reliable but has not been verified for accuracy or completeness. CBRE, Inc. makes no guarantee, representation or warranty and accepts no responsibility or liability as to the accuracy, completeness, or reliability of the information contained herein. You should conduct a careful, independent investigation of the property and verify all information. Any reliance on this information is solely at your own risk. CBRE and the CBRE logo are service marks of CBRE, Inc. All other marks displayed on this document are the property of their respective owners, and the use of such marks does not imply any affiliation with or endorsement of CBRE. Photos herein are the property of their respective owners. Use of these images without the express written consent of the owner is prohibited.

CBRE