

39

JOHN ST

LOWELL, MA

THE HISTORIC NESMITH BUILDING

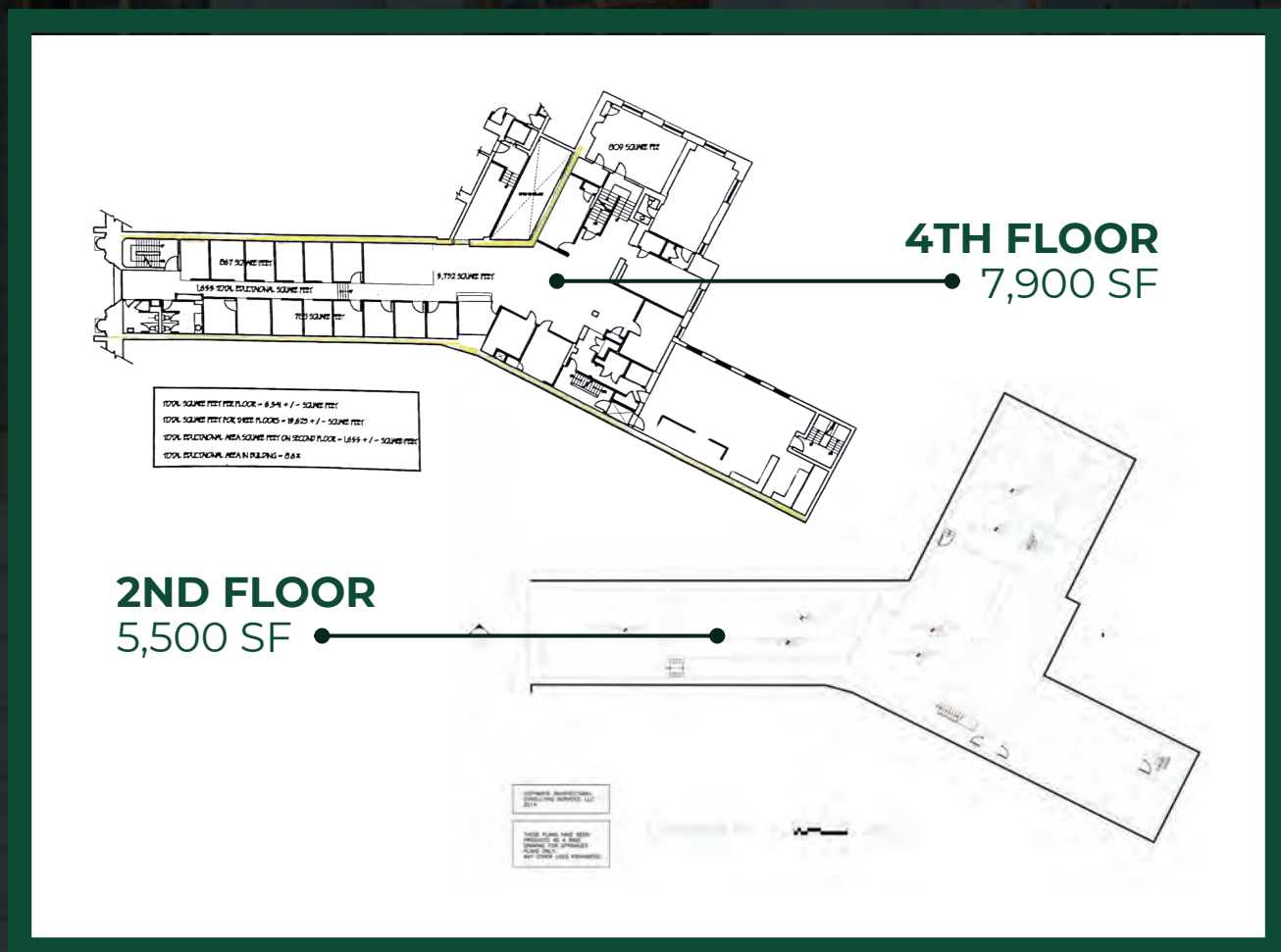


COMMERCIAL
O'BRIEN
PROPERTIES, INC

PROPERTY SUMMARY/SPECIFICATIONS

SUMMARY

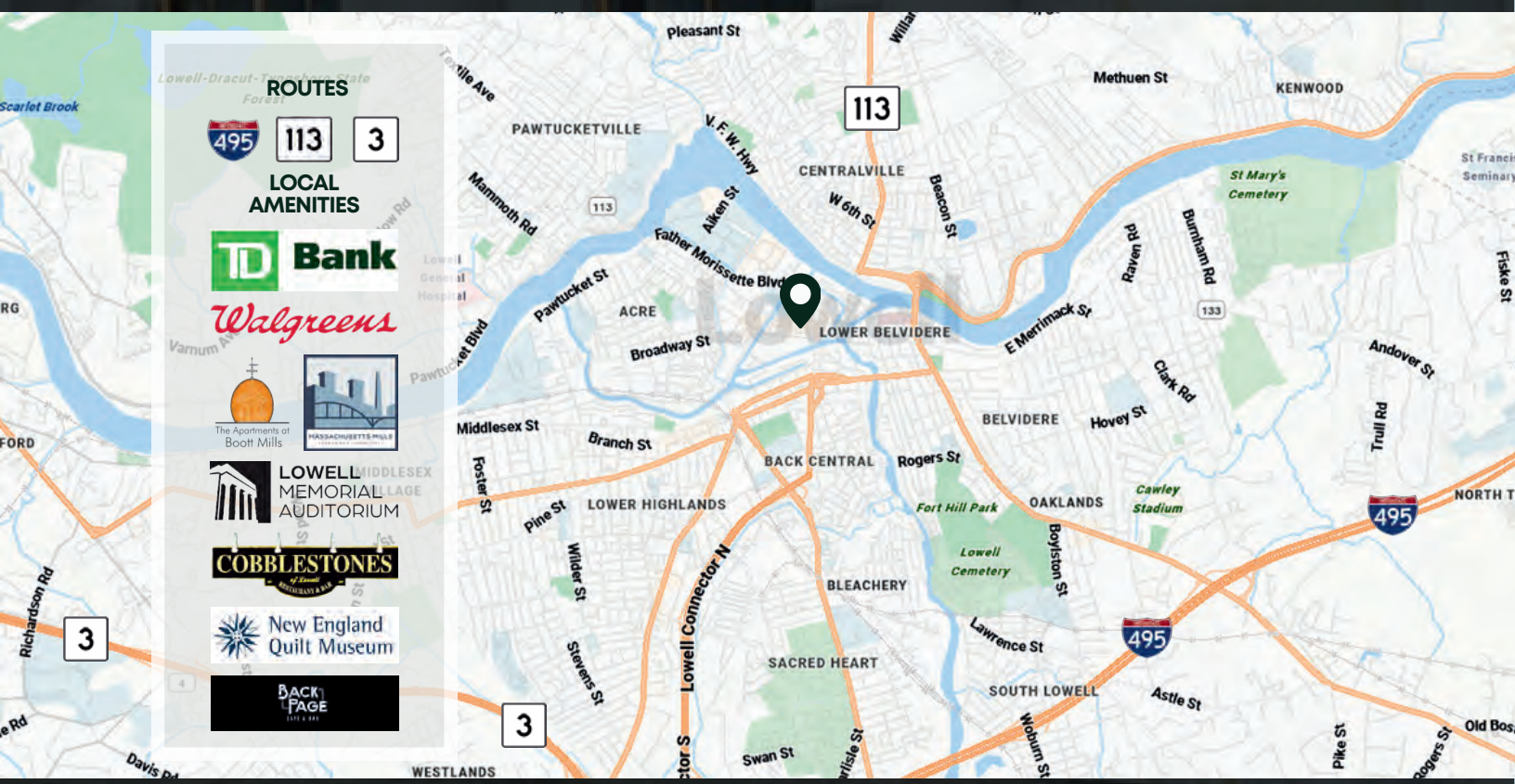
The Historic “Nesmith Building” is situated near numerous downtown Lowell, MA attractions and offers ample public parking across the street. These office spaces has been recently renovated to a stunning modern standard, providing easy access for both employees and clients.



SPECIFICATIONS

- TYPE: OFFICE
- LAND: 0.88 ACRES
- CONSTRUCTION: MASONRY
- STORIES: FOUR (4)
- 13,400 SF AVAILABLE
- ZONING: COMMERCIAL
- PARKING: PUBLIC GARAGE
- YEAR BUILT: 1924

THE PROPERTY/LOCATION



ROUTES
495 113 3

LOCAL AMENITIES

- TD Bank
- Walgreens
- The Apartments of Boott Mills
- MASSACHUSETTS MILLS
- LOWELL MIDDLESEX MEMORIAL AUDITORIUM
- COBBLESTONE'S
- New England Quilt Museum
- BACK PAGE

13,400 SF AVAILABLE/THE HISTORIC NESMITH BUILDING

39

JOHN ST

LOWELL, MA

THE HISTORIC NESMITH BUILDING



COMMERCIAL
O'BRIEN
PROPERTIES, INC

ROB MCGARRY
SENIOR ASSOCIATE

978.209.3211
rob@obriencommercial.com