



SPECTRUM PROPERTIES

Commercial Real Estate Services

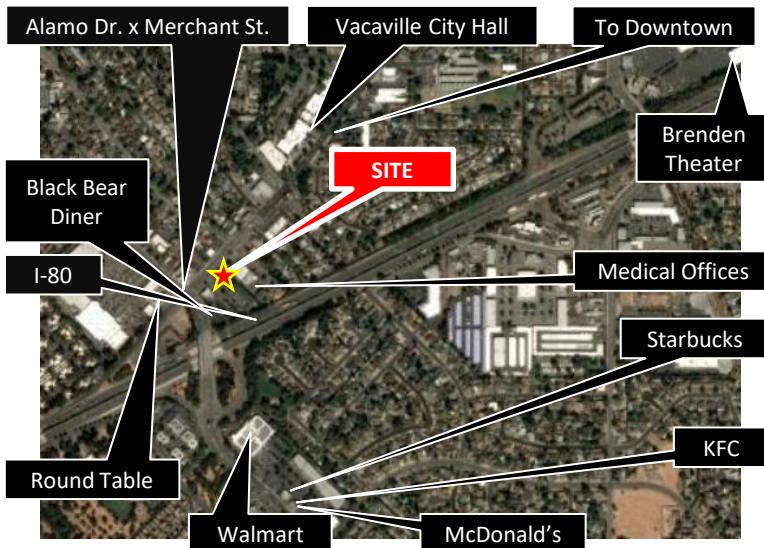
Spectrum Properties
Commercial Real Estate Services
(707) 469-8000
www.SpectrumPropertiesRE.com
CA DRE # 01860534

RARE RETAIL PAD OPPORTUNITY!!



921 Merchant St. a modern, 2-tenant retail pad building with glass-lined prominent corner space available. Building & monument signage, on-site parking, great visibility!

Subject Property is situated near the busy intersection of Alamo Dr. and Merchant St. near the Interstate 80 on/off ramps close to concentrated residential and retail areas on strip towards downtown district.



Property Features

Building Size	4,903 sf
Features	<ul style="list-style-type: none"> • Monument Signage • On-Site Parking • Near Freeway • Highly Visible • Office or Retail Possibilities
Suite A 4,000 sf	\$1.00/sf/mo + NNN Open floor plan, 4 private offices, conference room, 2 restrooms, storage, and kitchenette.

**FOR MORE INFORMATION,
PLEASE CALL (707) 469-8000**

Spectrum Properties
Commercial Real Estate Services

785 Alamo Dr. Ste. 170
Vacaville, CA 95688
www.SpectrumPropertiesRE.com

The depiction in the included photograph of any person, entity sign, logo, or property other than Spectrum Properties (S.P) client, and the property offered by S.P. is included only, and it not intended to connote any affiliation, connection, association, sponsorship or approval, by or between that which is incidentally depicted and S.P. or it's clients. This listing shall not be deemed an offer to lease, sublease or sell such property; and, in the event of any transaction for such property, no commission shall be earned by or payable to any cooperating broker expect if otherwise provided pursuant to the express terms, rates and conditions of S.P agreement with it's principal, if, as and when such commission (if any) is actually received form such principal.



921 Merchant St.
Vacaville, CA 95688
Ste. A – 4,000sf

OFFERED FOR LEASE BY
SPECTRUM PROPERTIES

