

FORD PROFESSIONAL PLAZA

1447 Ford Street, Redlands CA 92374



Professional Office Space

I-10 Freeway Signage & Exposure

- 2015 construction
- Suite 200A available at 802 SF
- Suite 100 Available at 856 SF
- Suite 106 Available at 1,498 SF
- Elevator served building
- 24 hours / 7 days key card access
- High quality tenant improvements
- On-site parking at 4.0 + per 1,000 SF
- I-10 Freeway visibility with immediate access
- Close proximity to LA Fitness & Starbucks
- Numerous nearby options for quality restaurants and quick serve eateries
- Exceptional demographics

All information has been obtained from sources believed reliable. We have not verified it and make no guarantee, warranty or representation about it. Any projections, opinions, assumptions or estimates used are for example only and do not represent the current or future performance of the property. You and your advisors should conduct a careful, independent investigation of the property to determine to your satisfaction the suitability of the property for your needs.

For Lease

\$2.50 PSF

Modified Gross (MG) lease rate

Available: Suite 200A - 802 SF

Suite 100 - 856 SF

Suite 106 - 1,498 SF

Fully built-out and ready to occupy.

Immediate access to I-10 Fwy

Top of Building Signage (#106)

For Additional Information or to Schedule a Tour Please Call:

Jim Towers, CCIM, MAI

Towers & Associates

Office: (909) 335-1735 or Cell: (909) 223-9328

CA Broker No.: 01342640



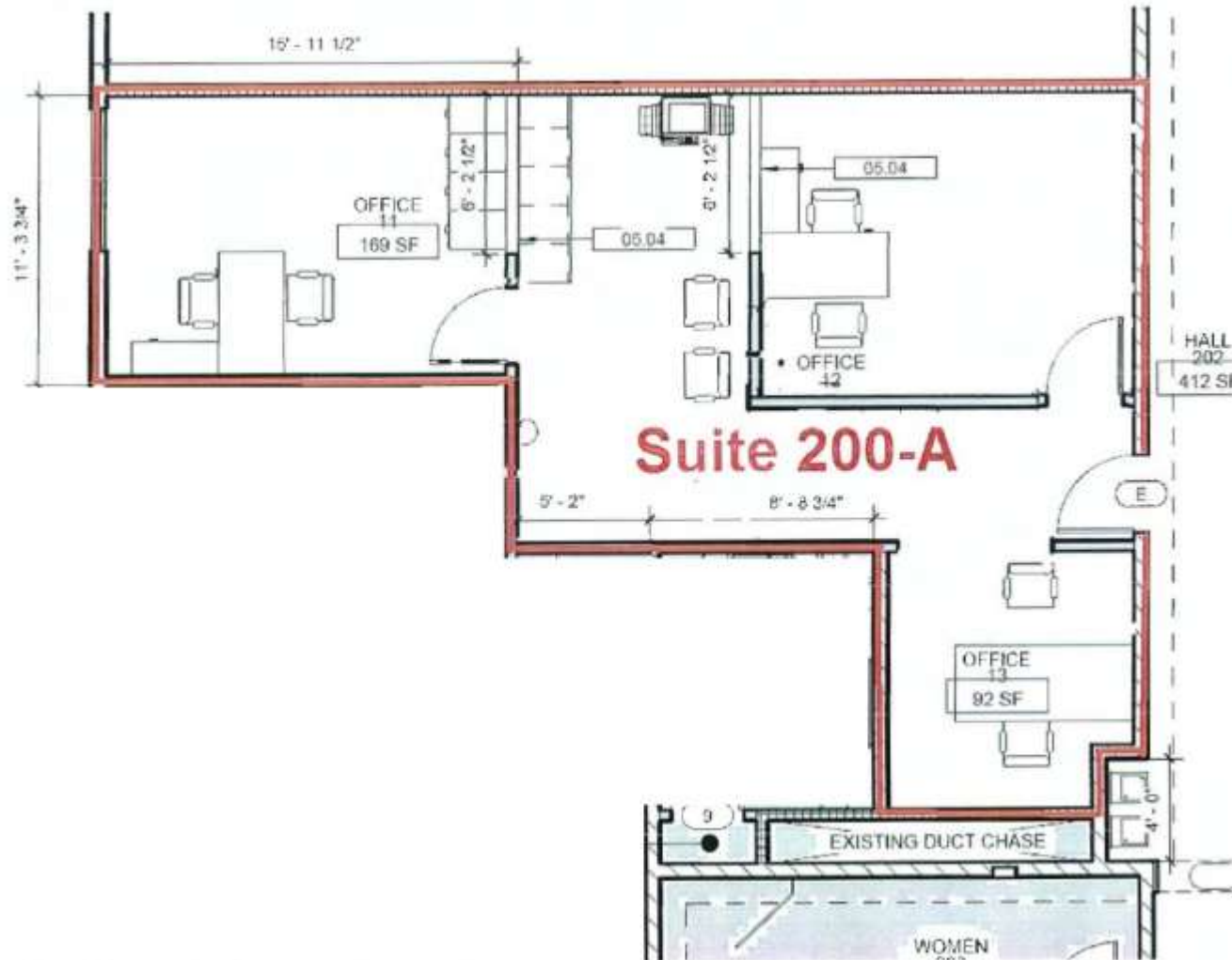
Office: 909-335-1735

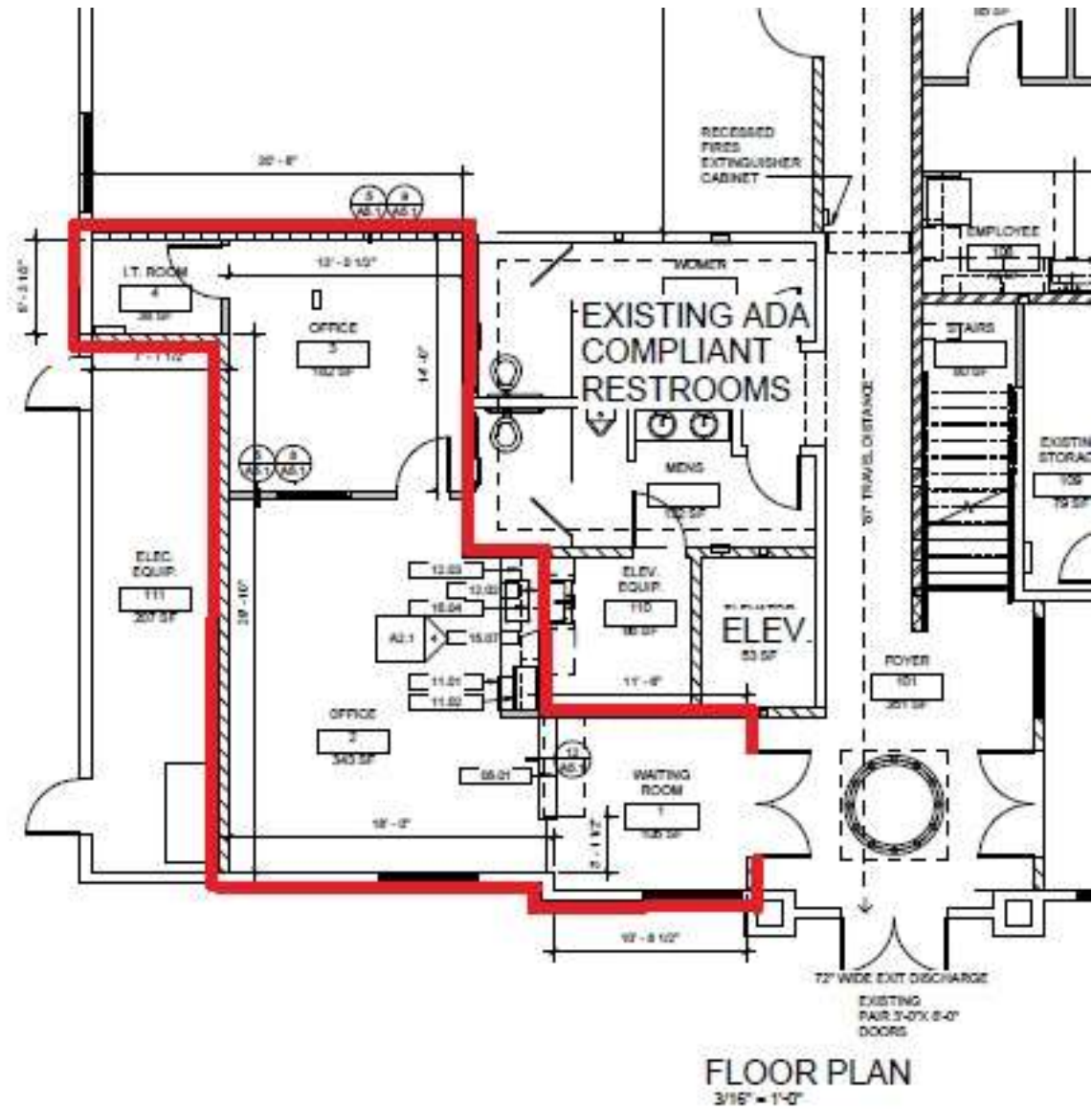
Direct: 909-223-9328

E-Mail: jtowers@live.com

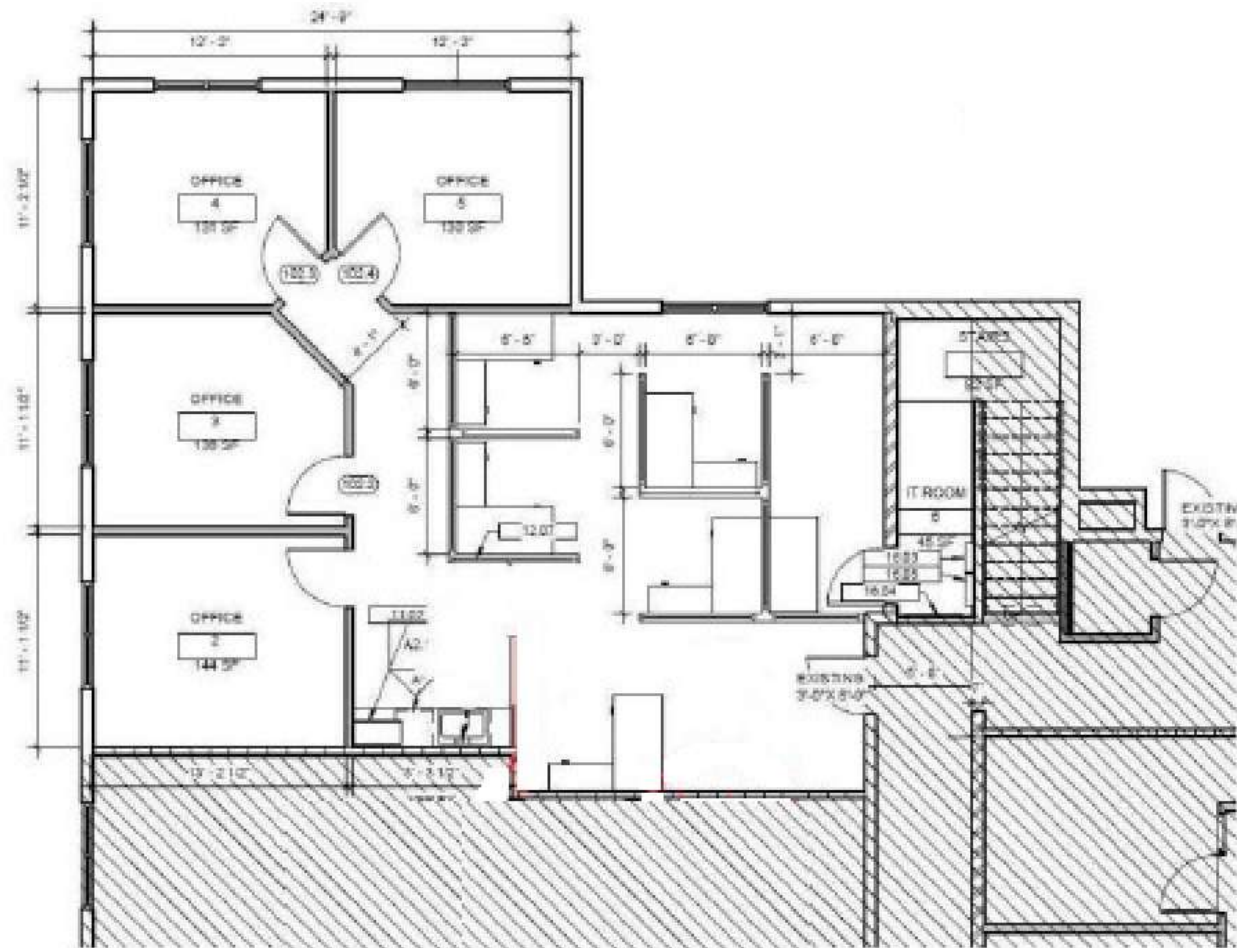
**P.O. Box 7783
Redlands, CA 92375
www.TowersRE.com**

SUITE 200A – 802 SF



SUITE 100 – 856 SF

Suite 106 – 1,498 SF







LA FITNESS.

THE LEARNING EXPERIENCE



Ford
Professional
Plaza



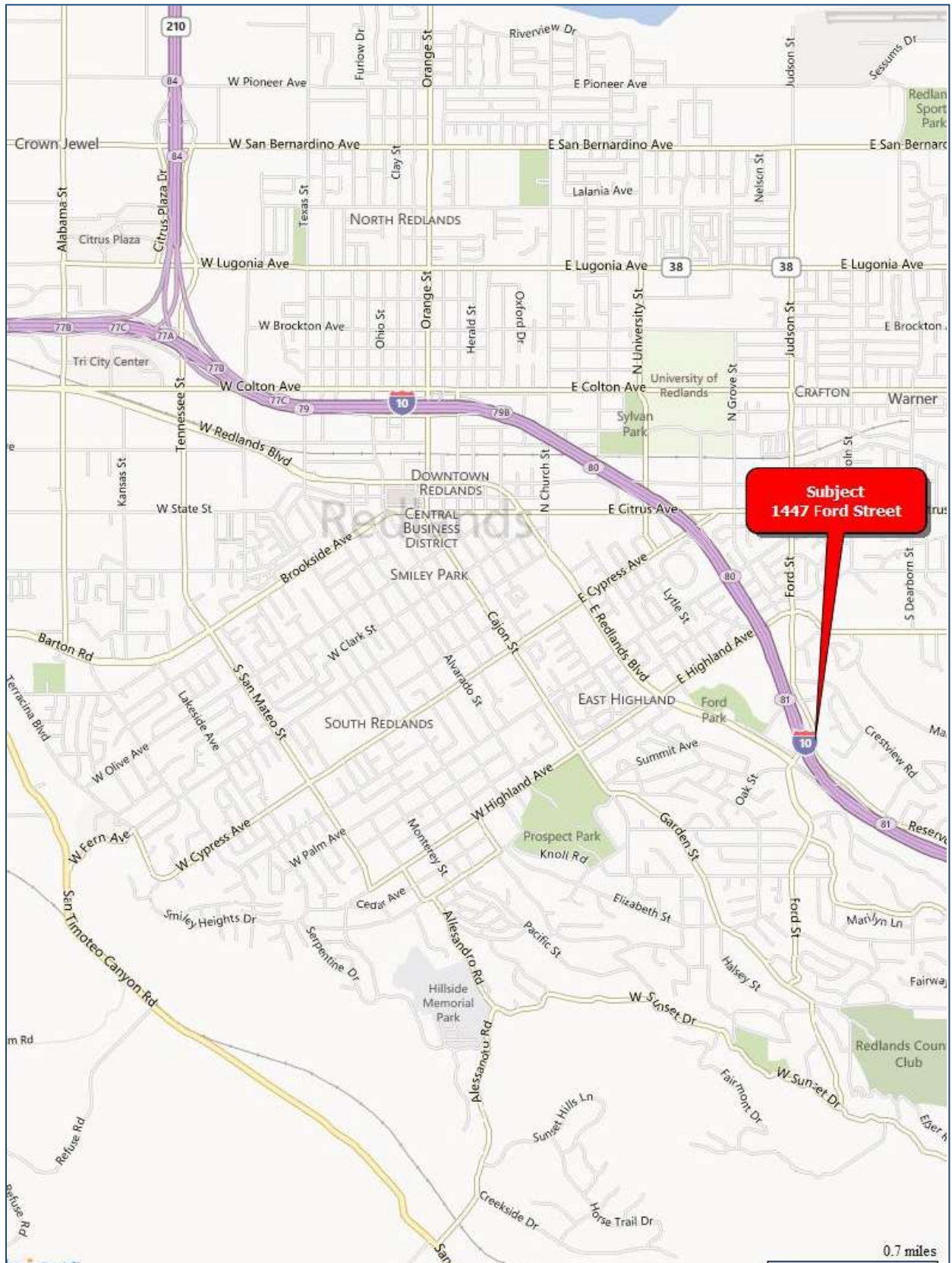
Common Area Lobby



Common Restrooms



LOCATION MAP



**Ford Professional Plaza
1447 Ford Street, Redlands, CA 92374**



James G. Towers, CCIM, MAI
Towers & Associates
Office: 909-335-1735
Direct: 909-223-9328
P.O. Box 7783
Redlands, CA 92375
E-Mail: jtowers@live.com
www.TowersRE.com