

INDUSTRIAL SPACE WITH YARD

FOR LEASE

14469 Mead Ct., Longmont, CO 80504



PROPERTY HIGHLIGHTS

This industrial space in East Longmont is ideal for a variety of businesses. Recent upgrades include multiple new furnaces and new lighting. Each space is well cared for and ready for your business needs.

- 200 - 400 amps of power, ideal for many industrial uses.
- Multiple 12'h x 12'w drive-in doors for easy material and equipment access.
- Secured Yard Storage
- Access to Rise Broadband and CenturyLink DSL.
- Generous parking ratio makes it easy to accommodate employees and customers.

Contact us today to schedule a tour and discover how this property can perfectly fit your business.

Unit C	4,500 SF
Timing	Unit C: May 1, 2025
Lease Rate	\$12.00/RSF NNN
Zoning	Industrial
Parking	1.6 / 1,000 SF
Lease Term	3+ years



200 - 400 Amp electrical



(2) 12'x12' Overhead Doors



18' Ceilings

FOR MORE INFORMATION



Aaron Baney

Senior Commercial Broker
303.449.2131 ext 166
aaron@coloradogroup.com

Jessica Cashmore

Principal/Senior Commercial Broker
303.449.2131 ext 146
jessica@coloradogroup.com

INDUSTRIAL SPACE WITH YARD FOR LEASE

14469 Mead Court, Longmont, CO 80504

Colorado Group

UNIT C PHOTOS



For a complete disclaimer, please see page one of this brochure.

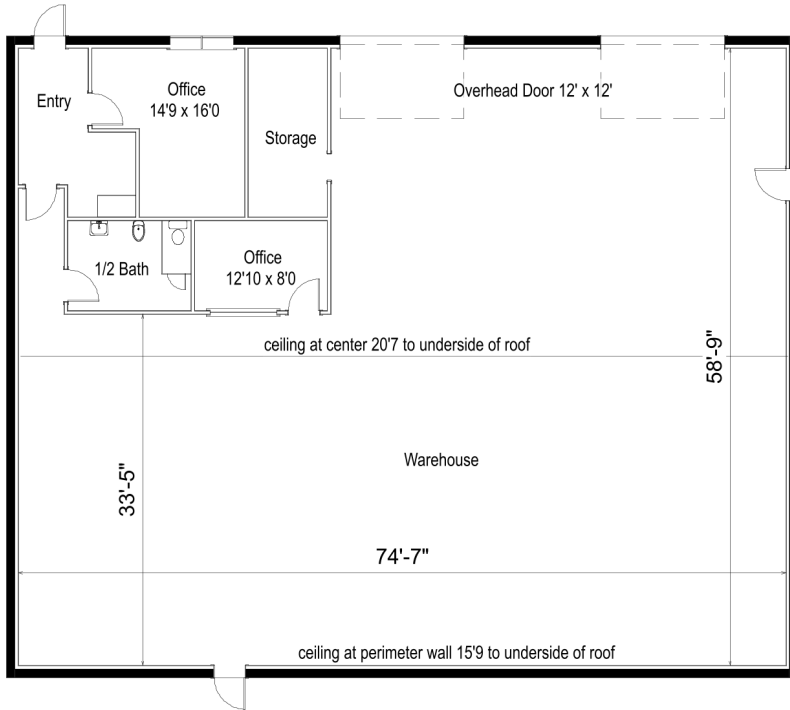
The Colorado Group, Inc. | 3101 Iris Avenue, Suite 240, Boulder, CO 80301 | 303-449-2131 | www.coloradogroup.com

INDUSTRIAL SPACE WITH YARD FOR LEASE

14469 Mead Court, Longmont, CO 80504



UNIT C FLOOR PLAN



TRAVEL TIMES

DENVER	40 MINUTES
DENVER INTERNATIONAL AIRPORT	30 MINUTES
FORT COLLINS	35 MINUTES
BOULDER	40 MINUTES

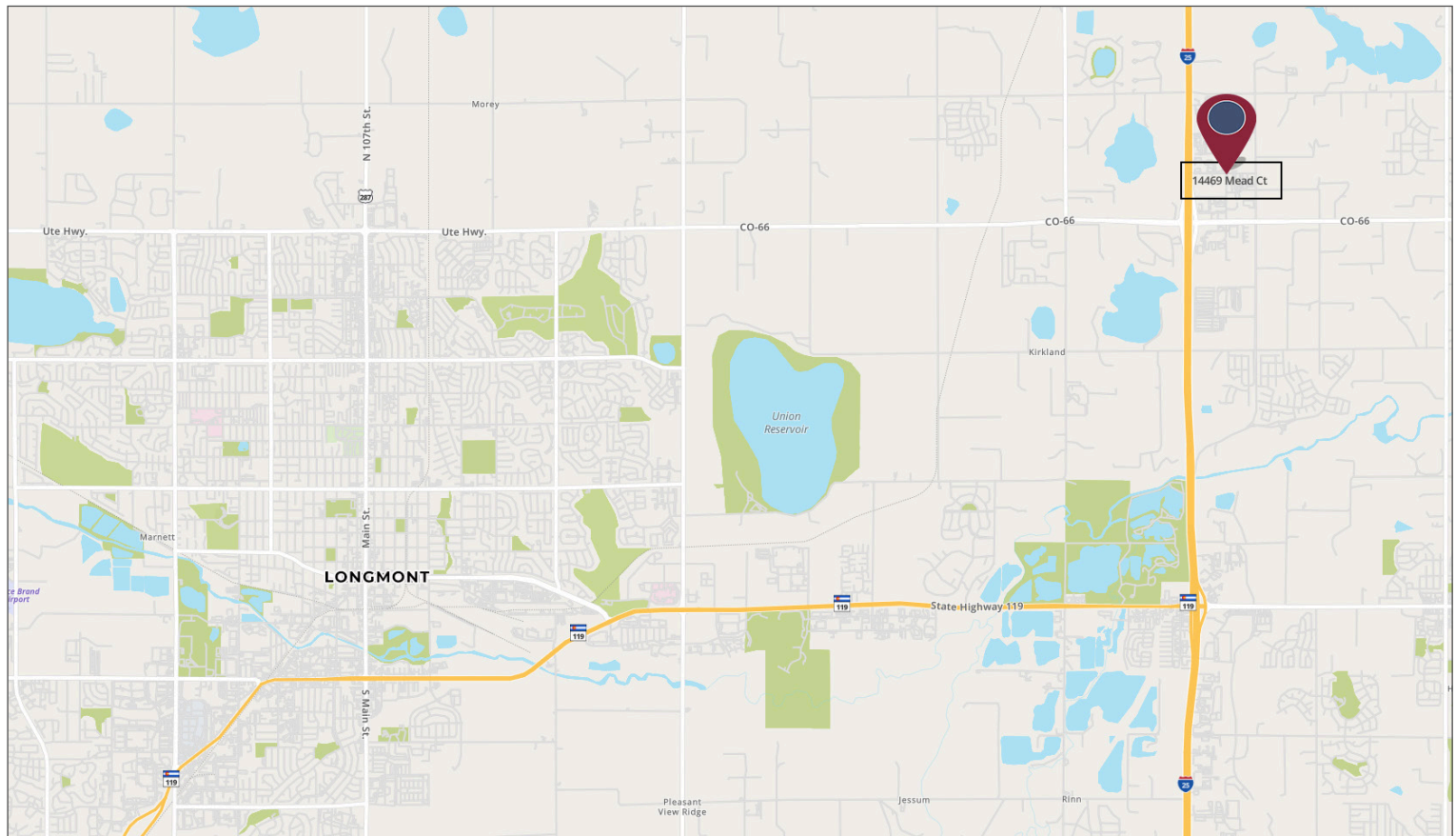
POPULATION

2 MILE RADIUS	5 MILE RADIUS	10 MILE RADIUS
3,183	38,720	175,926

AVERAGE HOUSEHOLD INCOME

2 MILE RADIUS	5 MILE RADIUS	10 MILE RADIUS
\$128,257	\$123,031	\$107,088

PROPERTY LOCATION



For a complete disclaimer, please see page one of this brochure.