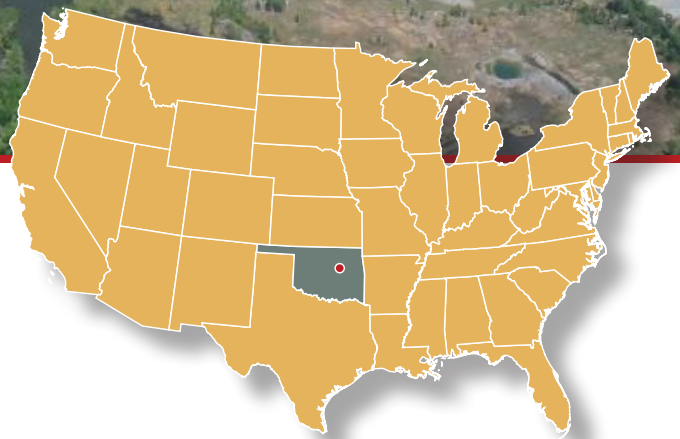


Greenhill Distribution Center



Brian Beam, CCIM ■ brianbeam@owassolandtrust.com

Office: (918) 376-6536 ■ Cell Phone: (918) 859-5584 ■ Fax: (918) 376-6836

OWASSOLANDTRUST

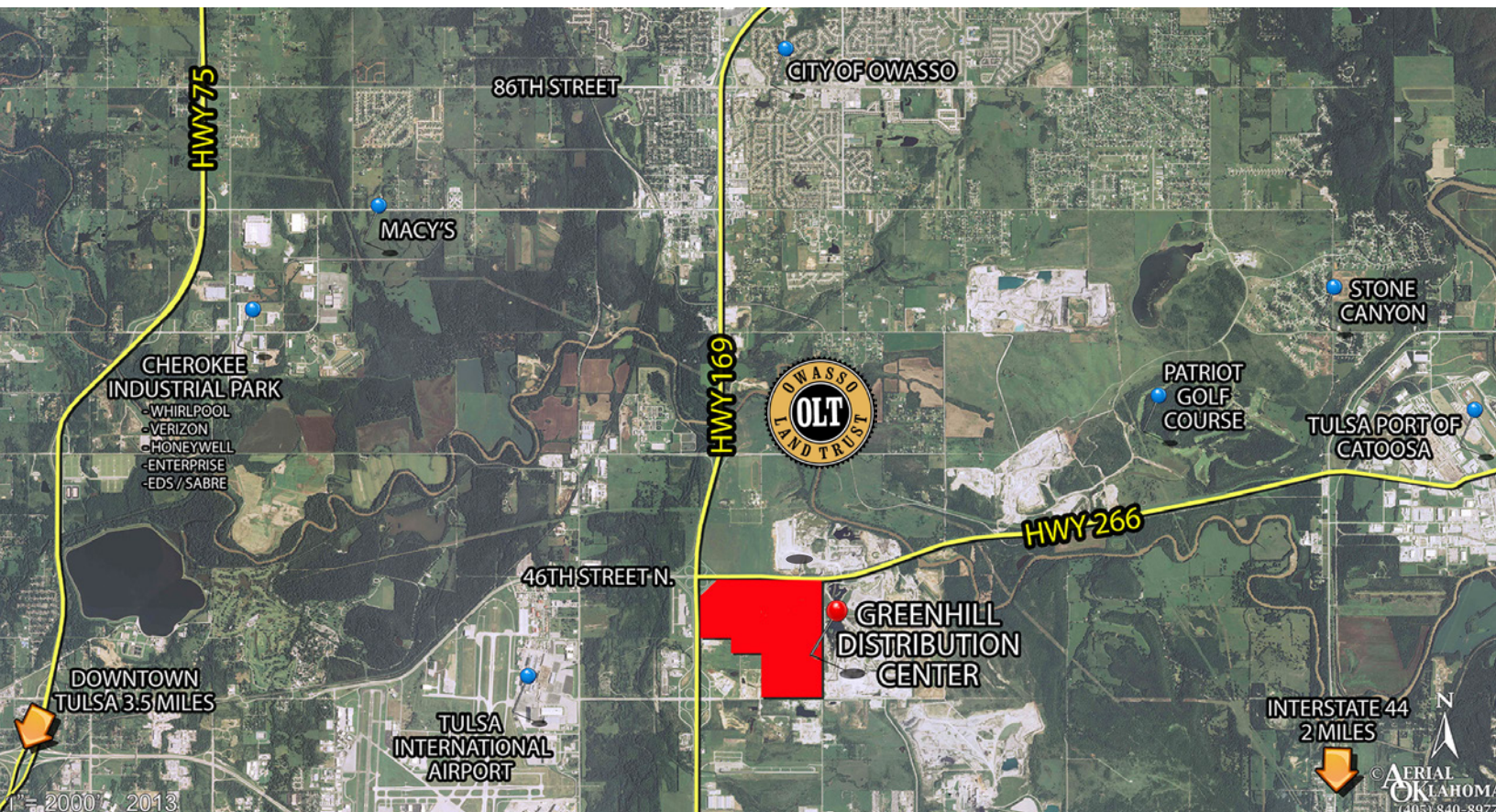
Bob Parker, CCIM ■ bob.parker@owassolandtrust.com

Office: (918) 376-6545 ■ Cell: (918) 605-5865 ■ Fax: (918) 376-6845



Features

- Visibility from **U.S. Highway 169**
- Convenient access to all major interstate arteries **U.S. 169, IH-244, IH-44, HWY-266**
- Zoned **Medium and Heavy Industrial** (IL, IM, IH)
- One (1) mile east of **Tulsa International Airport**
- Neighbor to **American Airlines, Spirit Aerosystems, IC Bus Plant** and **Warren Caterpillar**
- Four (4) miles west of **Port of Catoosa** on 46th St. N. (HWY266)
- Good demographics and **access to labor** in Owasso, Claremore and Tulsa
- **Underground utilities** available
- Two (2) miles from the **Federal Express** and **air cargo** areas
- Business-park amenities with expansive **open area**
- **Flexible sites** from 5 to 200+ acres
- **+135 acre site** can handle million+ sf distribution center



Brian Beam, CCIM ■ brianbeam@owassolandtrust.com

Office: (918) 376-6536 ■ Cell Phone: (918) 859-5584 ■ Fax: (918) 376-6836

OWASSOLANDTRUST

Bob Parker, CCIM ■ bob.parker@owassolandtrust.com

Office: (918) 376-6545 ■ Cell: (918) 605-5865 ■ Fax: (918) 376-6845



Overview

Greenhill Distribution Center is a +/- 400-acre master-planned industrial park located immediately east of the intersection of U.S. Highway 169 and 46th Street North in Tulsa, Oklahoma. Greenhill Distribution Center is one mile east of the Tulsa International Airport and four miles west of the Port of Catoosa. The park has excellent freeway visibility and access, with two interchanges to U.S. Highway 169 for north/south access to all major interstate arteries in Tulsa. This Class "A" Industrial park offers sites from 10 to 135 acres.

Convenient access
to major interstate
arteries including
Interstate Highways
44, 35 and 40.



Brian Beam, CCIM ■ brianbeam@owassolandtrust.com

Office: (918) 376-6536 ■ Cell Phone: (918) 859-5584 ■ Fax: (918) 376-6836

OWASSOLANDTRUST

Bob Parker, CCIM ■ bob.parker@owassolandtrust.com

Office: (918) 376-6545 ■ Cell: (918) 605-5865 ■ Fax: (918) 376-6845

