



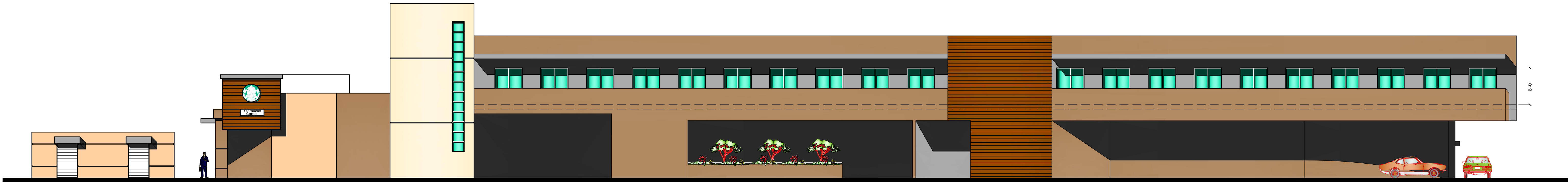
West Elevation

Scale : 1/16" = 1'-0"



North Elevation

Scale : 1/16" = 1'-0"



South Elevation

Scale : 1/16" = 1'-0"

This Plans are not valid unless signed by the Architect, Structural Engineer, Dept. of Building & Safety, Or City official of City of Panorama

Contractor shall verify all dimensions and conditions in the field. Should any discrepancy be found, the Contractor should notify the Architect prior to Commencement of any work

Written dimensions on this drawing shall have precedence over scaled dimensions. Contractors shall verify and be responsible for all dimensions and conditions on the job and the Architect must be notify of any variation from the dimensions show by this drawings. Shop drawings and details must be submitted to and approved by the Architect before proceeding

This documents contains information proprietary to Khorramian Group Architects Inc. And is furnished in confidence for limited purpose of evaluation, bidding or review. This document or its contents may not be reproduced or disclosed to others without the prior written consents of Khorramian Group Architects Inc. All rights reserved copyright 1987

Developer :

BENBAROUKH, LLC

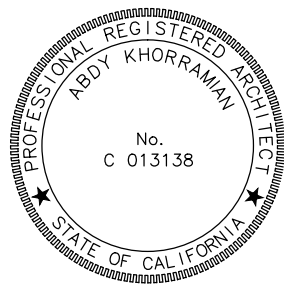
319 S. Robertson Blvd.
Beverly Hills, California 90211

Project Name :

Commercial Building
Retails / Offices

13755 Roscoe Blvd.
Panorama City, California 91402

Consultant :



K.G.A.
Khorramian Group Architects Inc.
4741 Laurel Canyon Blvd. Suite # 202 North Hollywood, Ca. 91607
Tel:(818) 508-4817 Fax:(818) 508-1251
E mail: kgha@kgha.com



| Revisions | |
|-----------|-------------|
| Date | Description |
| | |
| | |
| | |
| | |

| | |
|--------------|--------------|
| Job No. | PC - 2015-98 |
| Drawn by : | CT |
| Checked by : | AK |
| DATE : | 11/30/2015 |
| Scale : | As Noted |

Sheet Title

ELEVATIONS

Sheet Number

A-5

NOT FOR CONSTRUCTION