



1412 Deleglise Street Antigo, WI 54409

Property Features

- 24' high ceiling at center
- Four loading docks & two 14' service doors
- Motion sensor - timed lighting throughout
- 37,000 SF warehouse floor
- Five offices and four restrooms
- Seller to lease back 16,000 SF

Details

Located in the Antigo Industrial Park, just off W. Highway 64, this manufacturing/warehouse investment opportunity has the option for owner occupancy. The 39,800 SF building features a 25' column space/clear span with steel columns, four loading docks, and two 14' service doors. This facility is well-maintained and zoned for manufacturing.

PRICE **\$2,426,600**

BUILDING SIZE 39,800 SF

WAREHOUSE SIZE 37,500 SF

OFFICES 4: 3 IN WAREHOUSE
1 IN RECEPTION AREA

CONFERENCE ROOM 1

RESTROOMS 4

ACRES 6.126

ZONING MANUFACTURING

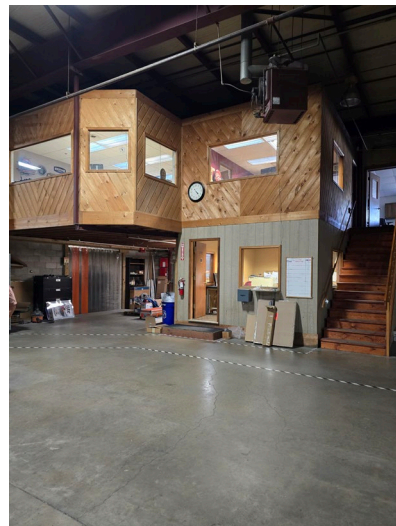
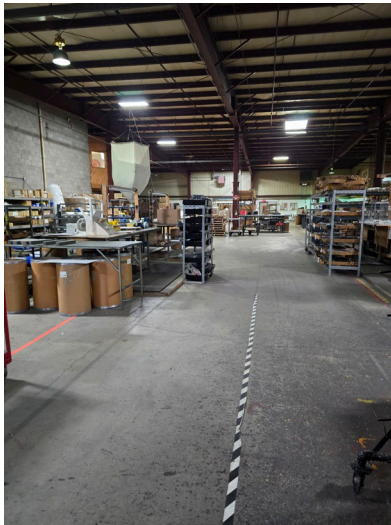
YEAR BUILT 1985

For more information:

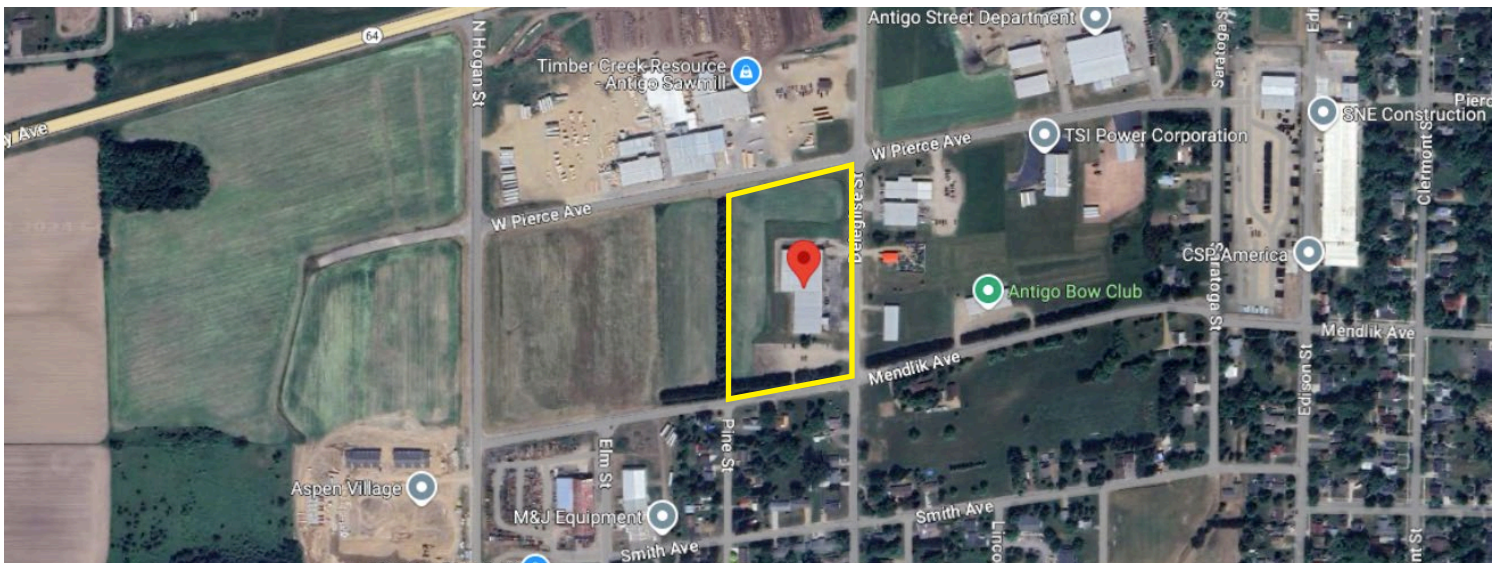
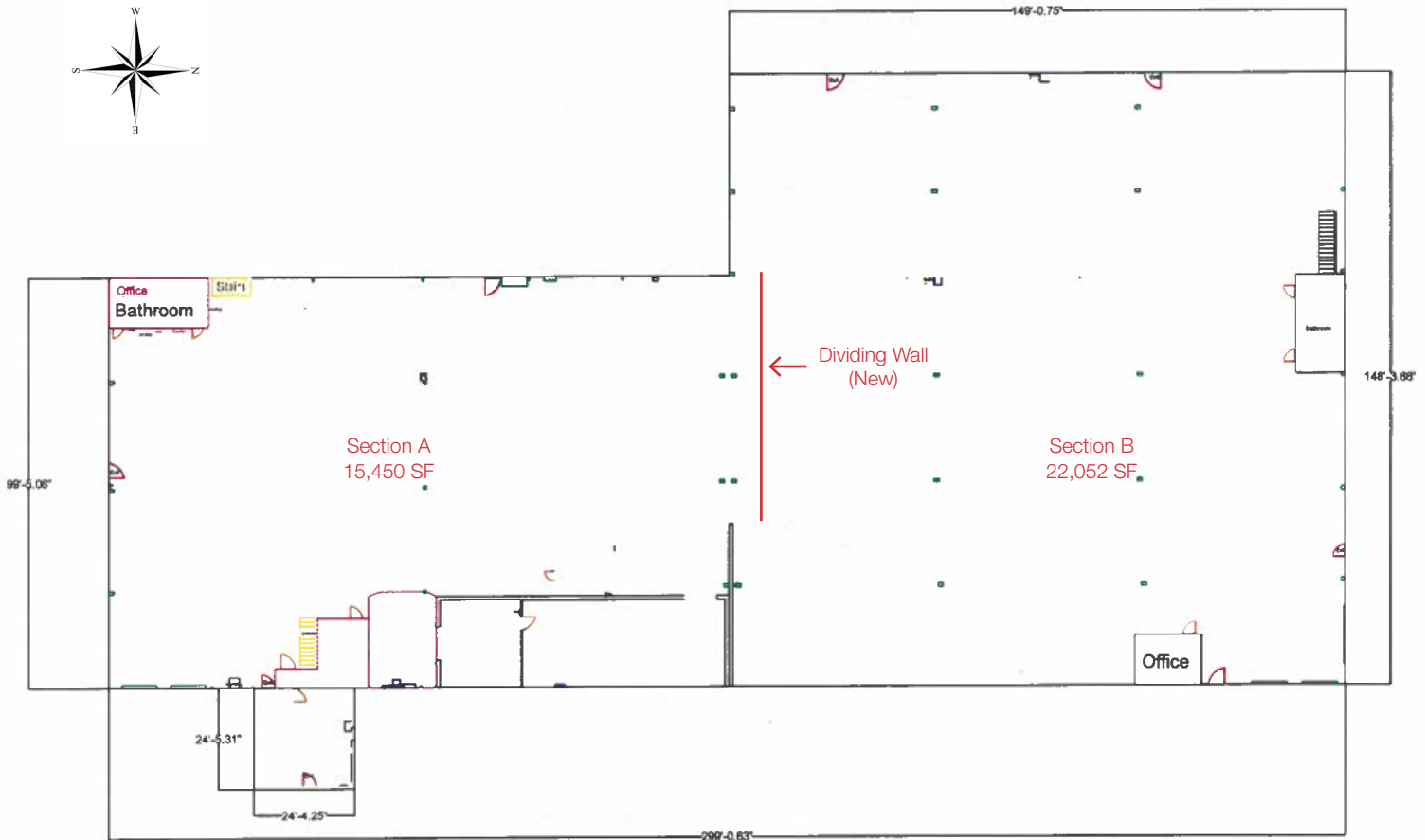
M.C. "Ark" Rhowmine, MPA, BPOR
715.297.1953 • ArkR@naipfefferle.com

NO WARRANTY OR REPRESENTATION, EXPRESS OR IMPLIED, IS MADE AS TO THE ACCURACY OF THE INFORMATION CONTAINED HEREIN, AND THE SAME IS SUBMITTED SUBJECT TO ERRORS, OMISSIONS, CHANGE OF PRICE, RENTAL OR OTHER CONDITIONS, PRIOR SALE, LEASE OR FINANCING, OR WITHDRAWAL WITHOUT NOTICE, AND OF ANY SPECIAL LISTING CONDITIONS IMPOSED BY OUR PRINCIPALS NO WARRANTIES OR REPRESENTATIONS ARE MADE AS TO THE CONDITION OF THE PROPERTY OR ANY HAZARDS CONTAINED THEREIN ARE ANY TO BE IMPLIED.

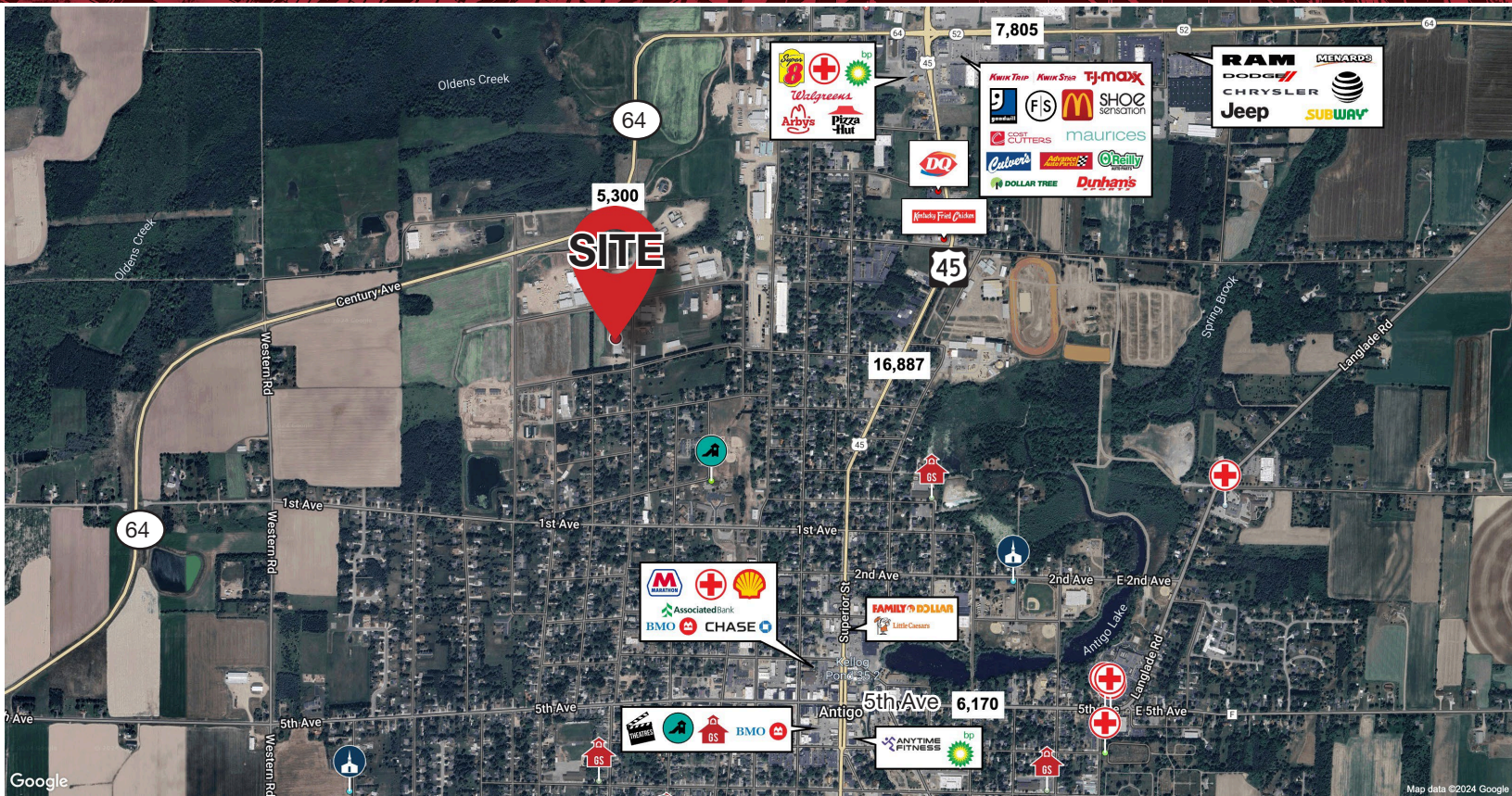
327 N. 17th Avenue, Suite 303
Wausau, WI 54401
715.261.2922
naipfefferle.com









Floor Plan



GENERAL DESCRIPTION	Steel structure, warehouse. Large open span. Located in an industrial park on the west side of Antigo. Near a state highway.
GENERAL CONDITION	Well-maintained, clean, no clutter, with no deferred maintenance
BUILDING SIZE	Total: 39,800 SF
WAREHOUSE SIZE	37,500 SF
OFFICES	4: 3 offices in warehouse; 1 in reception area
RESTROOMS	4
CONFERENCE ROOMS	1
NO. OF FLOORS	1
LOT SIZE	6.126 acres
STRUCTURE	Steel with concrete floor
ROOF	Slope: Y
CEILING CLEARANCE	At Center: 24' At Wall: 20'
COLUMN SPACE/CLEAR SPAN	25' steel column
CEILING/WALLS	Eaves: 21' Insulation R-Value: 24
FLOOR	Concrete-Reinforced
UTILITIES - ELECTRICAL SERVICE	Amp: 220 Phase: 3 Wire: 4 Volt: 480
UTILITIES - GAS SERVICE	Natural Gas
UTILITIES - WATER SERVICE	Municipal Pressure-psi 57.89
UTILITIES - SANITARY SEWER	Municipal
HVAC - HEATING	Office Warehouse-hanging units
HVAC - A/C	Office
LIGHTING	Fluorescent throughout - motion sensor - timed
LOADING DOCKS	4 - well
SERVICE DOORS	2: Height: 14' Width: 12'
PARKING	Asphalt - semi truck parking
FENCE	No
LANDSCAPING/TOPOGRAPHY	Flat
FIRE PROTECTION SYSTEM	Wet Pressure is 57.89 psi 0.20 GPM/SF 2000 SF 423.96 GPM
SECURITY	Yes
IT/TELECOM/DATA	Yes
CSM AVAILABLE	Yes
ENVIRONMENT PHASE-1	No
WETLANDS OR FLOOD PLAIN	No
ASSESSED FMV	\$952,500 (2023)
TAX/ID/PIN	2012915.004
ZONING	Manufacturing per accessor



Demographics (1, 3 & 5 Mile Radius)

POPULATION		EMPLOYEES	
	1 MILE: 3,545 3 MILES: 8,399 5 MILES: 9,607		1 MILE: 2,461 3 MILES: 5,834 5 MILES: 6,053
AVERAGE INCOME		BUSINESSES	
	1 MILE: \$59,769 3 MILES: \$67,398 5 MILES: \$71,269		1 MILE: 187 3 MILES: 410 5 MILES: 433
AVERAGE HOUSEHOLDS		TRAFFIC COUNTS	
	1 MILE: 1,656 3 MILES: 3,782 5 MILES: 4,281		WIS 64: 7,805 U.S. 45: 16,887 5TH AVE: 6,170

STATE OF WISCONSIN BROKER DISCLOSURE



Wisconsin law requires all real estate licensees to give the following information about brokerage services to prospective customers.

Prior to negotiating on your behalf the Brokerage firm, or an agent associated with the firm, must provide you the following disclosure statement.

Disclosure to Customers

You are a customer of NAI Pfefferle (hereinafter Firm). The Firm is either an agent of another party in the transaction or a subagent of another firm that is the agent of another party in the transaction. A broker or a salesperson acting on behalf of the Firm may provide brokerage services to you. Whenever the Firm is providing brokerage services to you, the Firm and its brokers and salespersons (hereinafter Agents) owe you, the customer, the following duties:

- The duty to provide brokerage services to you fairly and honestly.
- The duty to exercise reasonable skill and care in providing brokerage services to you.
- The duty to provide you with accurate information about market conditions within a reasonable time if you request it, unless disclosure of the information is prohibited by law.
- The duty to disclose to you in writing certain Material Adverse Facts about a Property, unless disclosure of the information is prohibited by law.
- The duty to protect your confidentiality. Unless the law requires it, the Firm and its Agents will not disclose your confidential information or the confidential information of other parties.
- The duty to safeguard trust funds and other property held by the Firm or its Agents.
- The duty, when negotiating, to present contract proposals in an objective and unbiased manner and disclose the advantages and disadvantages of the proposals.

Please review this information carefully. An Agent of the Firm can answer your questions about brokerage services, but if you need legal advice, tax advice, or a professional home inspection, contact an attorney, tax advisor, or home inspector. This disclosure is required by section 452.135 of the Wisconsin statutes and is for information only. It is a plain-language summary of the duties owed to a customer under section 452.133(1) of the Wisconsin statutes.

Confidentiality Notice to Customers

The Firm and its Agents will keep confidential any information given to the Firm or its Agents in confidence, or any information obtained by the Firm or its Agents that a reasonable person would want to be kept confidential, unless the information must be disclosed by law or you authorize the Firm to disclose particular information. The Firm and its Agents shall continue to keep the information confidential after the Firm is no longer providing brokerage services to you.

No representation is made as to the legal validity of any provision or the adequacy of any provision in any specific transaction.

The following information is required to be disclosed by law:

1. Material Adverse Facts, as defined in section 452.01(5g) of the Wisconsin Statutes (see definition below).
2. Any facts known by the Firm or its Agents that contradict any information included in a written inspection report on the property or real estate that is the subject of the transaction.

To ensure that the Firm and its Agents are aware of what specific information you consider confidential, you may list that information below or provide that information to the Firm or its Agents by other means. At a later time, you may also provide the Firm or its Agents with other information you consider to be confidential.

CONFIDENTIAL INFORMATION

NON-CONFIDENTIAL INFORMATION

(the following information may be disclosed to the Firm and its Agents)

(Insert information you authorize to be disclosed, such as financial qualification information.)

Definition of Material Adverse Facts

A “Material Adverse Fact” is defined in Wis. Stat. 452.01(5g) as an Adverse Fact that a party indicates is of such significance, or that is generally recognized by a competent licensee as being of such significance to a reasonable party, that it affects or would affect the party’s decision to enter into a contract or agreement concerning a transaction or affects or would affect the party’s decision about the terms of such a contract or agreement.

An “Adverse Fact” is defined in Wis. Stat. 452.01(1e) as a condition or occurrence that a competent licensee generally recognizes will significantly and adversely affect the value of the property, significantly reduce the structural integrity of improvements to real estate, or present a significant health risk to occupants of the property; or information that indicates that a party to a transaction is not able to or does not intend to meet his or her obligations under a contract or agreement made concerning the transaction.

Notice About Sex Offender Registry

You may obtain information about the sex offender registry and persons registered with the registry by contacting the Wisconsin Department of Corrections on the Internet at <http://www.doc.wi.gov> or by telephone at 608-240-5830.