



LANDMARK
COMMERCIAL
REAL ESTATE



WEBB AT K-96 MEDICAL OFFICE BUILDING SUITES AVAILABLE FOR CONDO SALE OR LEASE

3161 N Webb Rd, Wichita, KS 67226

PROPERTY SUMMARY

PLEASE CALL FOR PRICING

Address 3161 N Webb Rd, Wichita, KS 67226

Available Suites Ste. 120: 5,927 SF | ~~Ste. 210: 912 SF~~

Building Size 20,000 sq. ft.

Year Built 2018

Lot Size 2.28 acres

Zoning PUD

Signage 4 monument signs

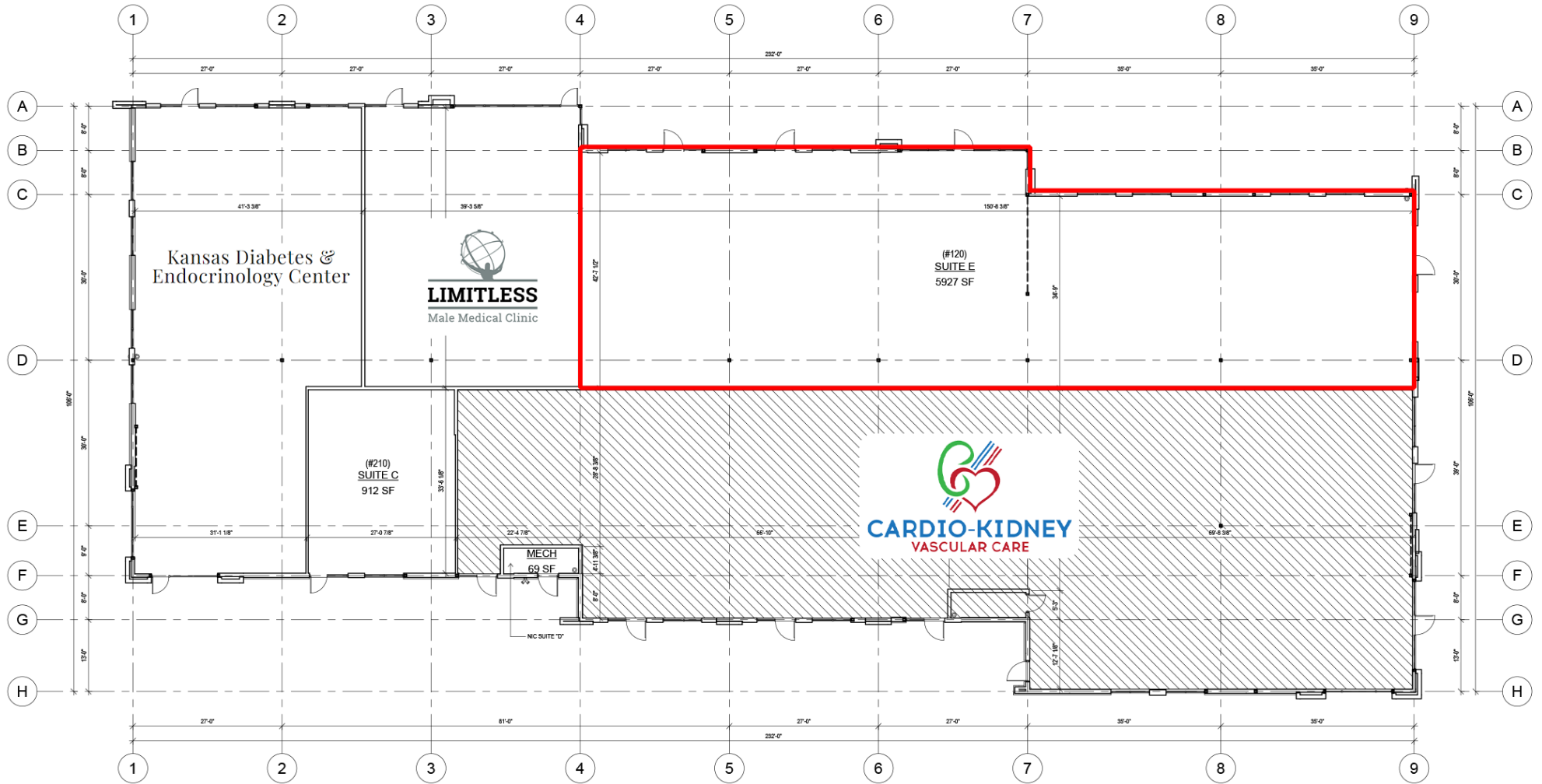
Parking Ample shared and front door parking

DEMOGRAPHICS

	1 Mile	3 Miles	5 Miles
Population	2,832	36,425	94,948
Households	1,310	15,311	37,852
Avg HH Income	\$129,188	\$116,874	\$107,556

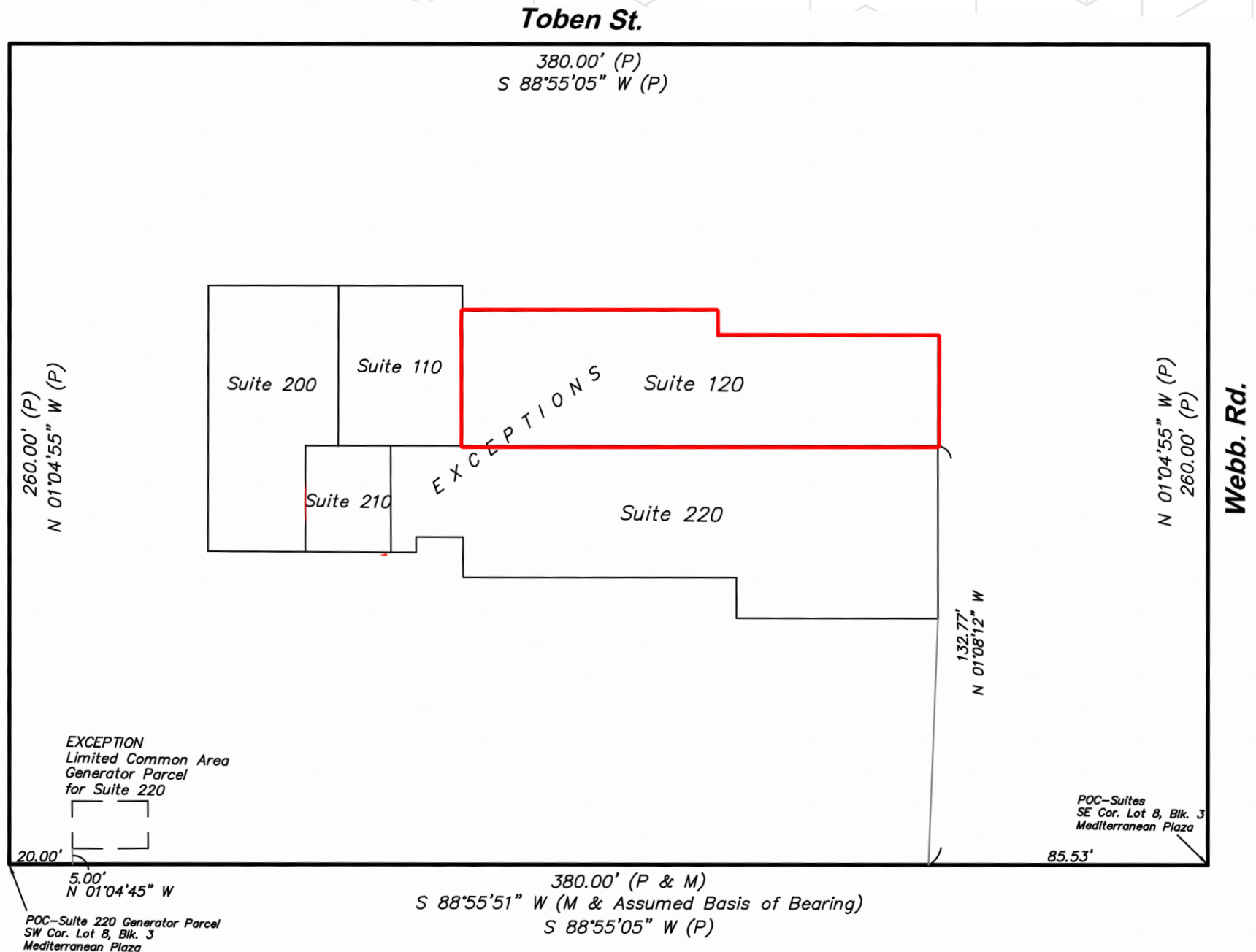


SITE PLAN



1 MAIN FLOOR AREA PLAN
3/32" = 1'-0"

SITE PLAN



MONUMENT SIGNAGE LOCATIONS



AERIAL





LANDMARK COMMERCIAL REAL ESTATE

156 North Emporia
Wichita, Kansas 67202
www.landmarkrealestate.net

For More Information:

DAVID LEYH, CCIM, SEC
SR. VICE PRESIDENT & SALES ASSOCIATE

Mobile: 316.371.8087
dleyh@ccim.net



ABOUT LANDMARK

Landmark Commercial Real Estate, Inc. has extensive experience in the leasing and sales of retail, office, restaurant and industrial properties, as well as property management. We represent both Owners and Tenants/Buyers. Our extensive experience with both sides of the transaction gives us added insight in negotiating transactions that work for both parties. Landmark Commercial Real Estate maintains a large property database, which we utilize to provide Tenants with quick and reliable information. Landmark is also experienced in all phases of commercial real estate development including evaluation, conception, site selection, site planning, developmental services, construction management and leasing.

Landmark prides itself on our success in focusing on leasing and marketing properties for sale, lease and development. Many of the properties we handle are owned by institutional owners, investors and developers, who demand a high level of reporting and results. We are selective in the Listings that we accept, and we provide a commitment to results through implementation of a strategic marketing plan on every property.

DISCLAIMER

Information included herein was provided by third parties and should only be used for informational purposes. Landmark Commercial Real Estate, Inc and their respective agents, representatives, and employees, (i) make no representations or warranties of any kind, express or implied, with respect to the accuracy or completeness of any information included herein, and (ii) shall have no liability whatsoever arising from any errors or discrepancies between the above listed information and actual documents.