



LAND FOR SALE IN CARTHAGE

PROPERTY OVERVIEW

TRACT | TRACT 1

PRICE | \$1,952,000

ACREAGE | 355.29 +/- ACRES

PLAT | BOOK 19, PAGE 386

ZONING | RURAL AGRICULTURAL

For sale: 355.29 +/- acres along Mount Carmel Road in Carthage. Tract 1 offers 4,500 feet of road frontage, pine plantation of various ages, and a portion of mixed hardwood. Approximately 17 +/- acres of the eastern portion falls within a flood zone. The tract includes a historic cemetery.

HOLLY BELL
NC BROKER
C: 910.690.1065
HOLLY@CSGNC.COM

CAROLINA SUMMIT GROUP
235 E Pennsylvania Ave.
Southern Pines, NC 28387
910.684.5353
carolinasmittgroup.com

MATT WIMBERLY
NC BROKER
C: 910.639.0124
MATT@CSGNC.COM

PHOTOS



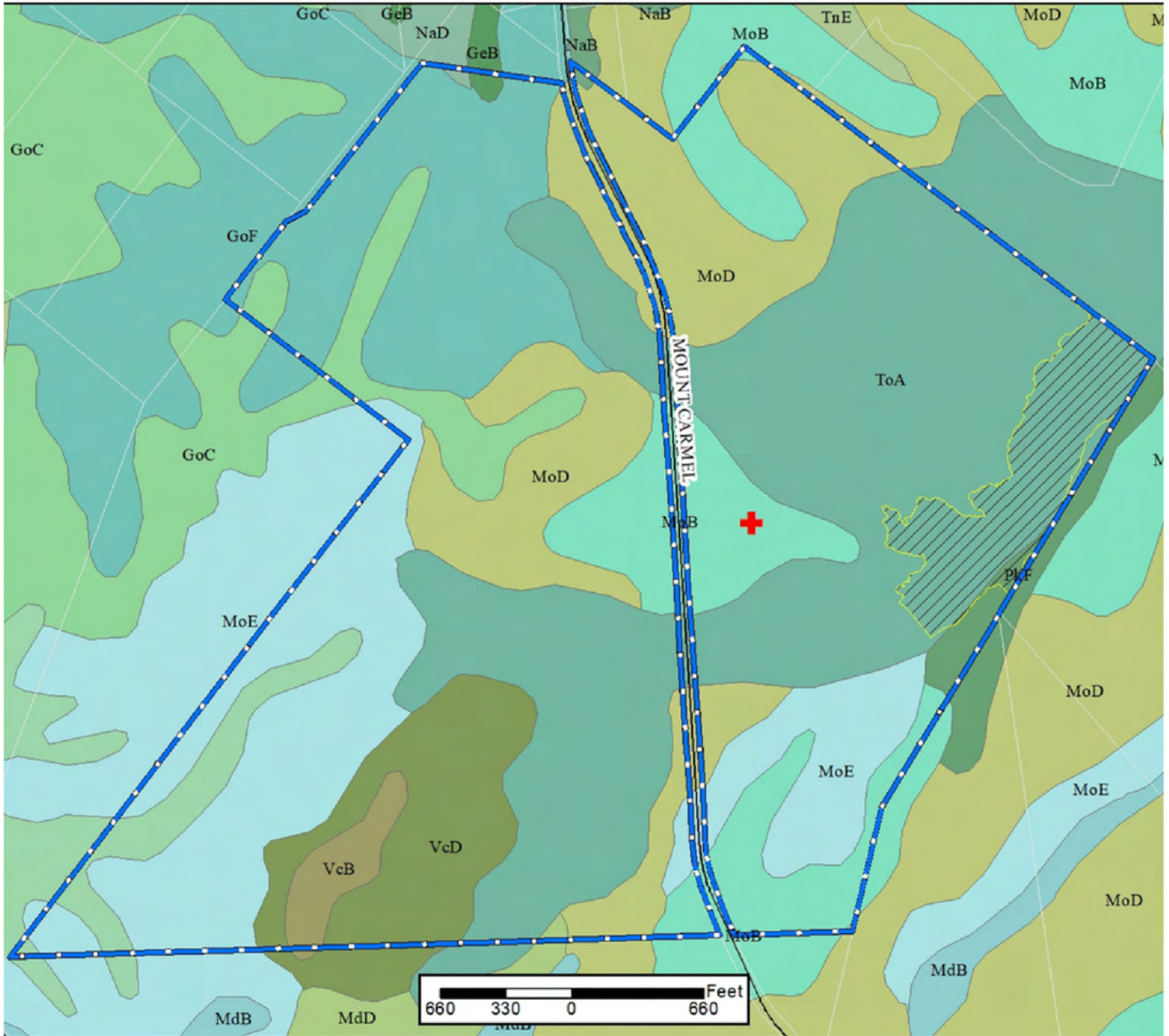
HOLLY BELL
NC BROKER
C: 910.690.1065
HOLLY@CSGNC.COM

CAROLINA SUMMIT GROUP
235 E Pennsylvania Ave.
Southern Pines, NC 28387
910.684.5353
carolinasummitgroup.com

MATT WIMBERLY
NC BROKER
C: 910.639.0124
MATT@CSGNC.COM

SOIL MAP | TRACT 1

TBD MOUNT CARMEL ROAD - +/-355.29
 PORTION OF PARCEL ID 00008183 OCCONEECHEE COUNCIL BOY SCOUTS



HOLLY BELL
 NC BROKER
 C: 910.690.1065
 HOLLY@CSGNC.COM

CAROLINA SUMMIT GROUP
 235 E Pennsylvania Ave.
 Southern Pines, NC 28387
 910.684.5353
 carolinasummitgroup.com

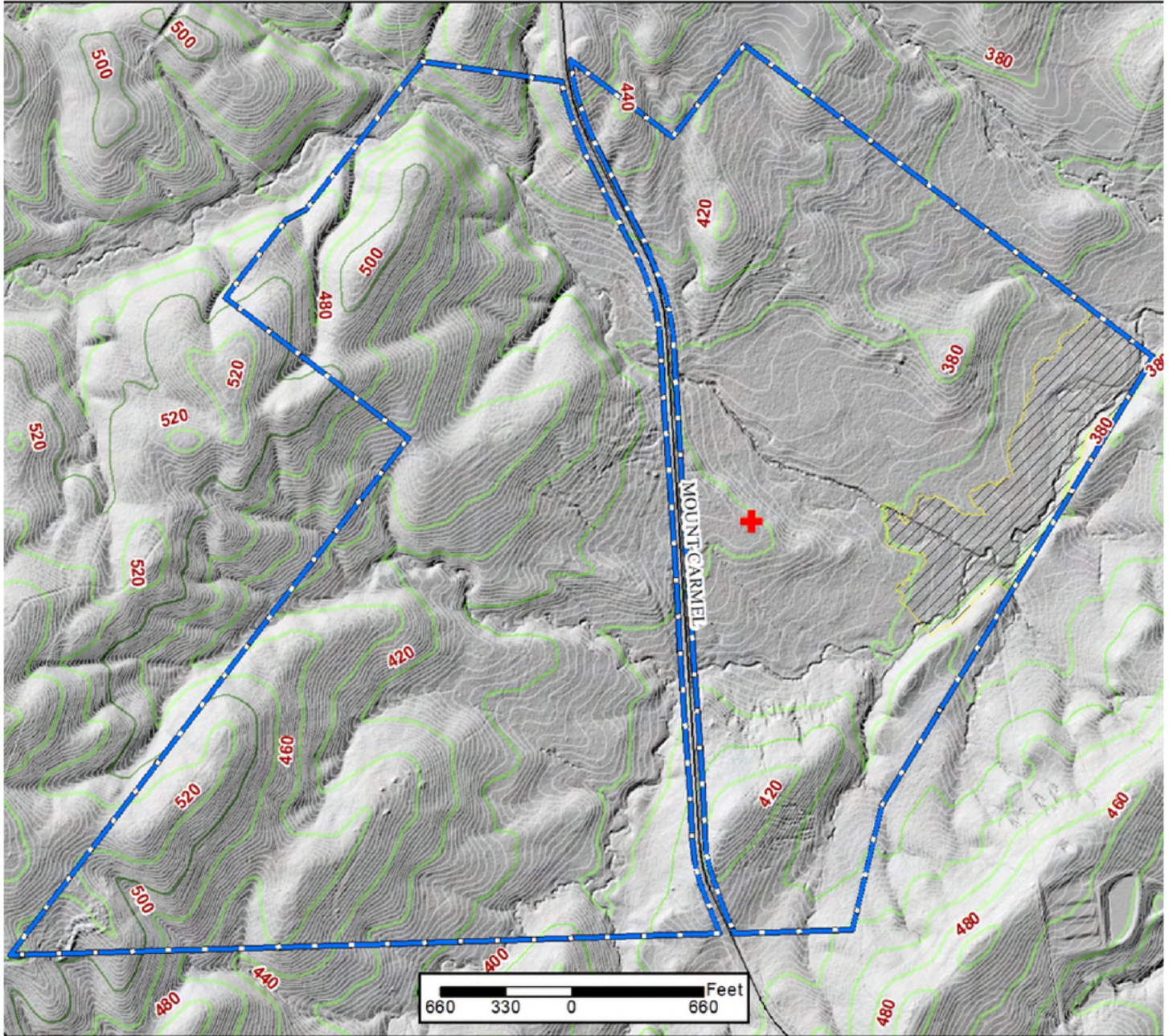
MATT WIMBERLY
 NC BROKER
 C: 910.639.0124
 MATT@CSGNC.COM

TBD MOUNT CARMEL ROAD

CARTHAGE, NC 28327

TOPO MAP | TRACT 1

TBD MOUNT CARMEL ROAD - +/- 355.29
PORTION OF PARCEL ID 00008183 OCCONEECHEE COUNCIL BOY SCOUTS



HOLLY BELL
NC BROKER
C: 910.690.1065
HOLLY@CSGNC.COM

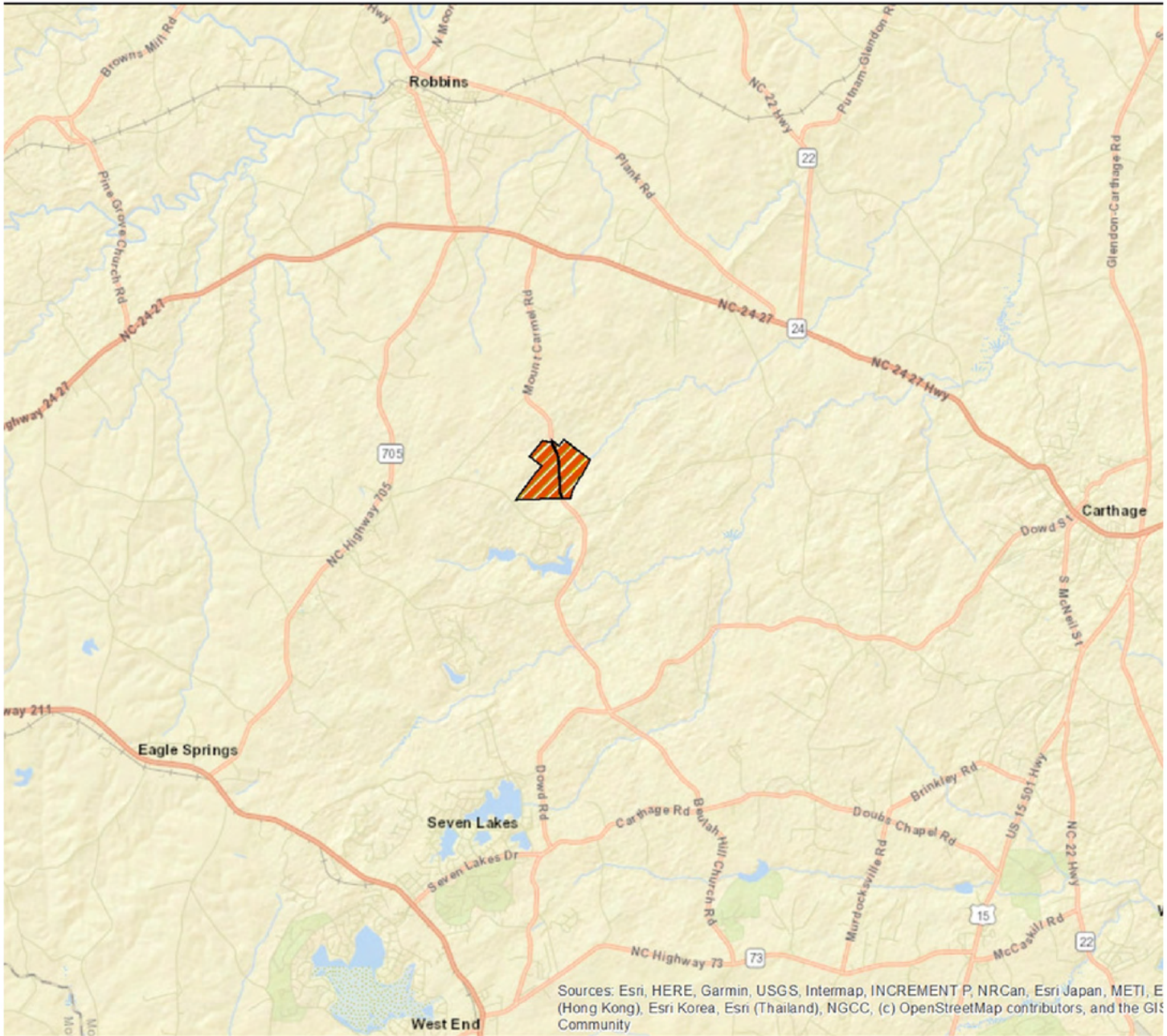
CAROLINA SUMMIT GROUP
235 E Pennsylvania Ave.
Southern Pines, NC 28387
910.684.5353
carolinassumitgroup.com

MATT WIMBERLY
NC BROKER
C: 910.639.0124
MATT@CSGNC.COM

The information contained herein has been obtained through sources deemed reliable but cannot be guaranteed as to its accuracy. Any information of special interest should be obtained through independent verification.

LOCATION MAP

TBD MOUNT CARMEL ROAD - +/-355.29
PORTION OF PARCEL ID 00008183 OCCONEECHEE COUNCIL BOY SCOUTS



HOLLY BELL
NC BROKER
C: 910.690.1065
HOLLY@CSGNC.COM

CAROLINA SUMMIT GROUP
235 E Pennsylvania Ave.
Southern Pines, NC 28387
910.684.5353
carolinasummitgroup.com

MATT WIMBERLY
NC BROKER
C: 910.639.0124
MATT@CSGNC.COM