

RETAIL SPACE FOR LEASE

68 Monitor Street, Jersey City, NJ

DONOVAN
REALTY & DEVELOPMENT, INC.
DRD



Size: 1,338 SF
Rental Rate: \$35.00 PSF NNN

Ceiling Height: 11'-9"
Estimated Delivery: Fall 2023

Highlights

- ✓ New Construction
- ✓ Premier location in the **Bergen-Lafayette** neighborhood near **Liberty State Park**
- ✓ Anchored by a luxury apartment building (**39 rental units**)
- ✓ Excellent Demographics (**397k** residents and **\$130,000** average household income within 3 miles)
- ✓ Easy access to the **Holland Tunnel, PATH** (Grove St. & Exchange Pl. Stations), the **Light Rail** and **NJ Turnpike**

CONTACT Tom Donovan

EXCLUSIVE tdonovan@donovanrealtygroup.com

BROKERS: 917.796.7381

Michael Plesnitzer

mplesnitzer@dvncre.com

516.242.4749

Konrad Konik

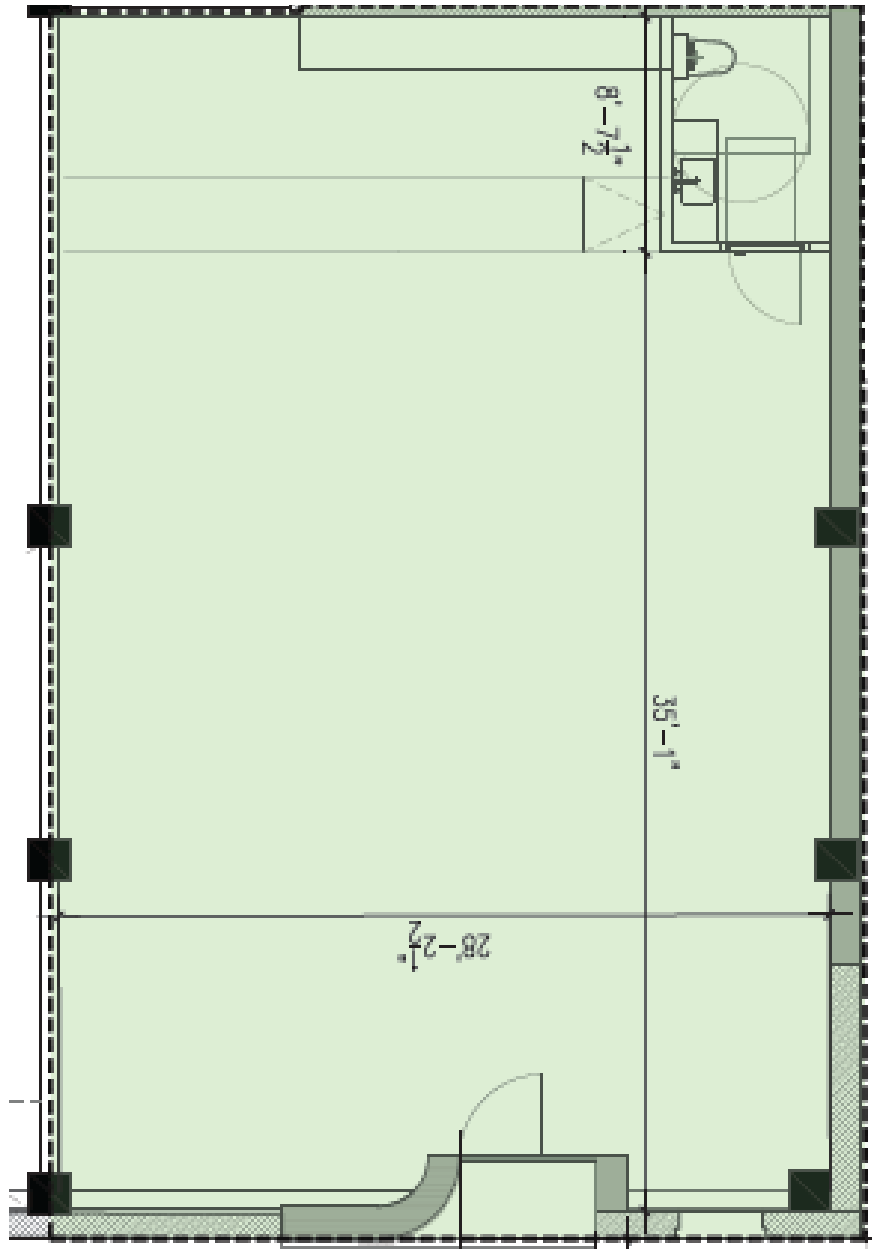
kkonik@dvncre.com

347.735.9779

Donovan Realty & Development, Inc. | 450 Bloomfield Ave., Suite 204,
Verona, NJ 07044 | 973.327.3292 | Licensed Real Estate Broker

This information has been secured from sources we believe to be reliable, but we make no representations as to the accuracy of the information. References to square footage are approximate. Tenant must verify the information and bears all risk for any inaccuracies.

FLOOR PLAN



Monitor Street

SURROUNDING AREA



Yum Eatery

89 Monitor
114 Residential
Units

99 Monitor
Future 8,000 SF
Retail

El Empanada
King

El Tipico

Cosmo
Liquors

Simplicity
Lash Bar

Lasani
Pharmacy

The Grind
Shop

270 Johnston Ave
Future 169
Residential Units

Mi
Casa

Bori
Grocery

Café
Lafayette

Pacific
Pizza

River
Mart

Harrys
Daughter

Mordi's

Future Residential &
Retail Development

The Rib
King

Pinwheel
Garden
Dumpling Bar

68 Monitor Street

The Grind
General
Store

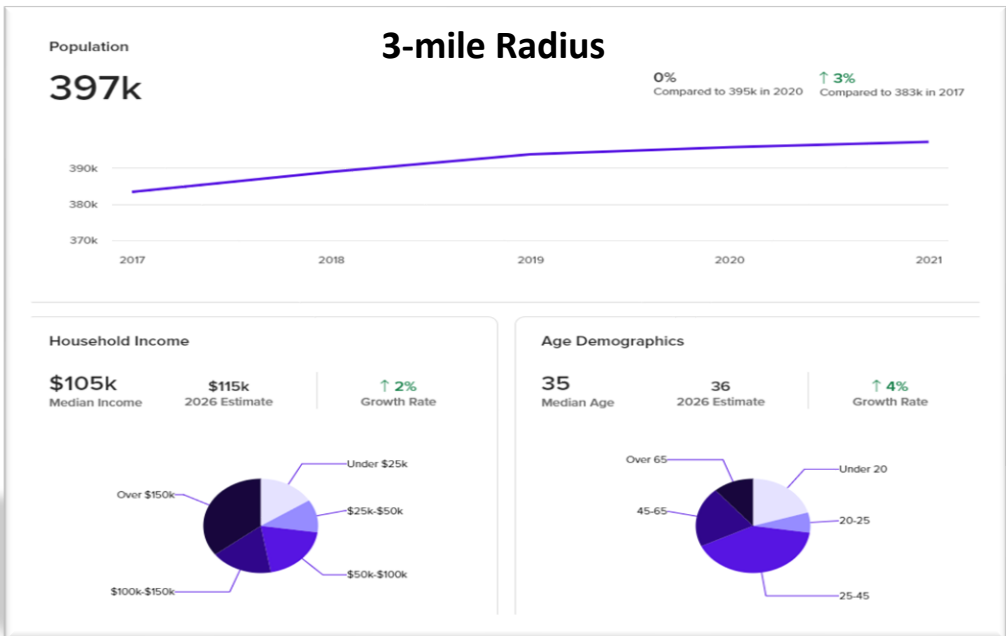
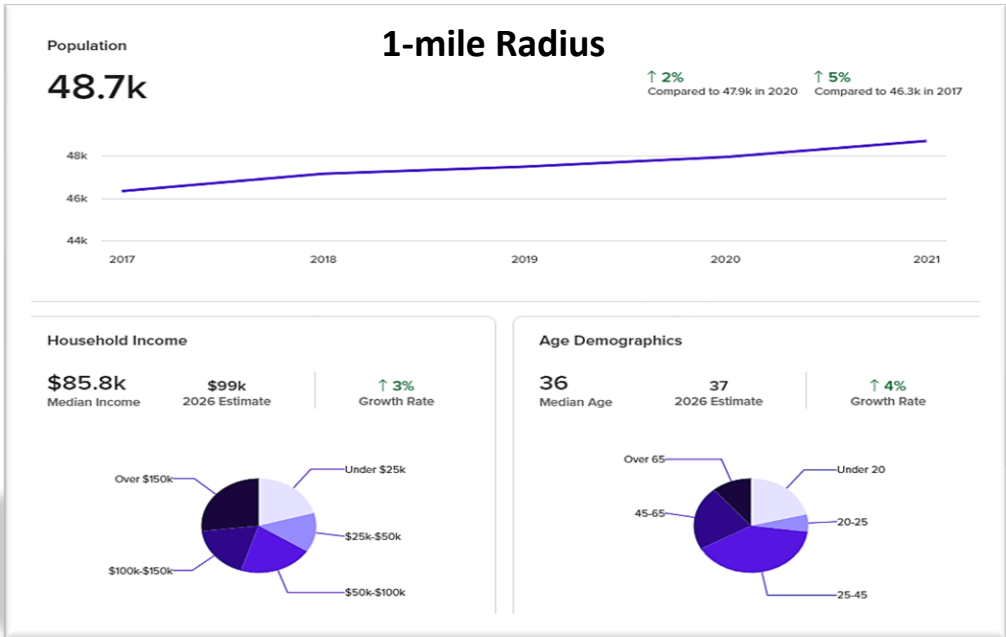
Future Edge
Works
Conference
Center

Future Liberty
Science Center
High School

Liberty
Science
Center

SciTech City
Planned 400 Units

DEMOGRAPHICS



BUILDING RENDERINGS

