



AVAILABLE For Lease | Retail (Auto Related)

PREMISES ± 5,997 RSF

ASKING RENT \$13.30 NNN per RSF/Year

ESTIMATED 2025 NNNs \$4.70 per RSF/Year

TERM Negotiable



Wilshire Advisory Group is pleased to bring to market a 5,997 RSF Industrial/Retail Property for lease in the Orlando Airport/Edgewood sub-market.

Renovations Completed in 2017, with upgrades to both the warehouses and office portions of the Premises. Retail space with C-3 zoning - wholesale Commercial District.



Gonzalo Rioja
305.262.0246
grioja@wilshireag.com

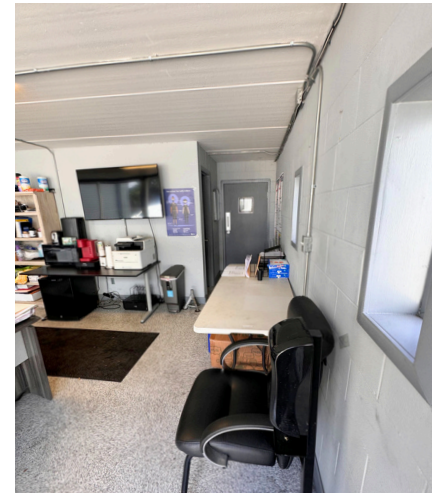
Luis Aguirre
305.262.0246
luis@wilshireag.com

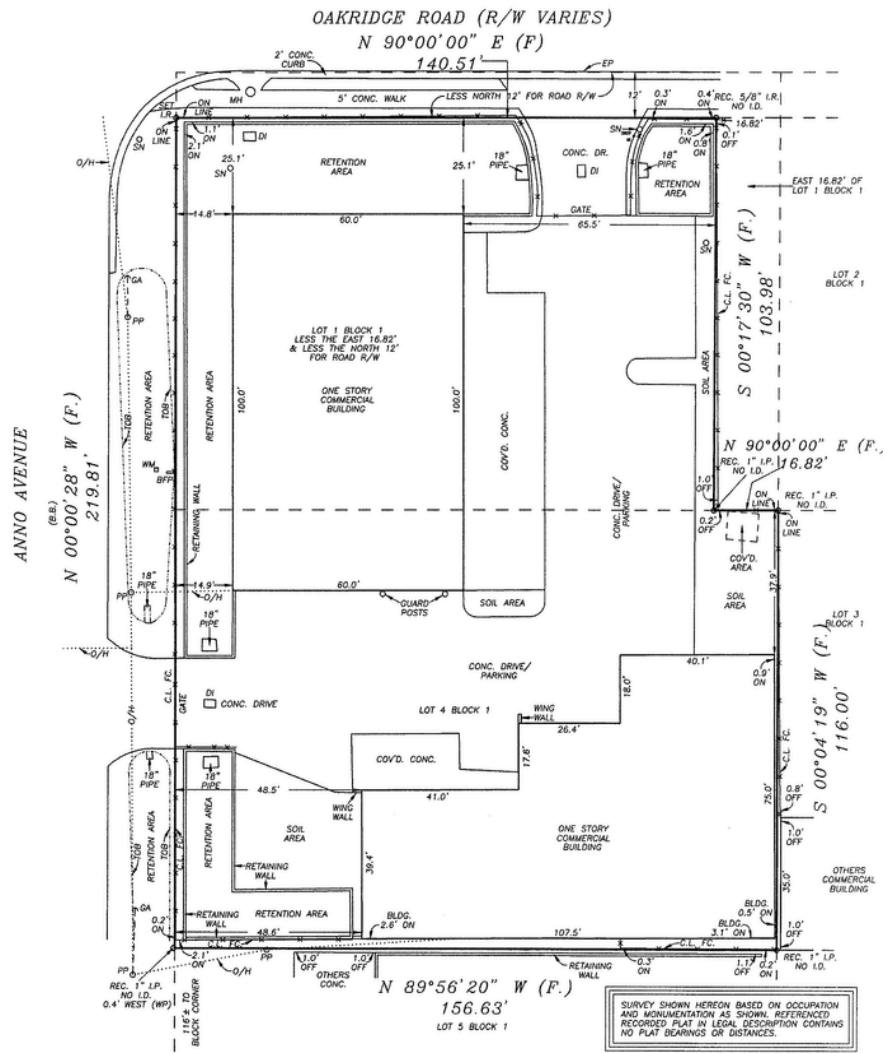
5201 Waterford District Dr
Suite 530
Miami, FL 33126
305.262.0246



- Industrial Warehouse Built in 2001, Renovated 2017 Including Significant Upgrades in Office and Mezzanine
- ± 5,997 RSF Available for Lease
- ± 2,500 RSF Office with Second Story Mezzanine:
 - Front Office, Cubicle Areas, Reception, Break Room
 - Interior Offices on Second Floor
- Four Oversized Grade Level Doors (14' W x 14' H and 16' W x 14' H)
- Located just North of the Orlando International Airport
- Close Proximity to State Road 528 and Florida Turnpike

- **Zoning:** C-3
Wholesale Commercial District - Unincorporated Orange County
- **Property Type:** 2740 Auto Repair Garage
- **Lot Size:** ± 0.63 Acres
- **Clear Height:** 18' - 21'
- **Power:** 3 Phase, 240 Volts, 400 Amps, LED Lighting
- **Parking:** 19 Parking Spaces
- **Signage:** Visible/Monument Signage Facing E Oak Ridge Rd & Anno Ave





BUILDING ONE: 7,260 SF
 Two Roll-up Doors
 Approximately: 100' x 75'
 Features: Front Office / Receptionist, Break Room, Mezzanine office space, Covered Parking
 Exterior Construction: Concrete/Cinder Block

BUILDING 1:
7,260 SF

BUILDING 2:
5,997 SF

Two Roll-up Doors
 Approximately: 74' x 107'
 Exterior Construction: Concrete Block Stucco
 Features: Covered Parking, Tech Office and Breakroom

BUILDING TWO: 5,997 SF

SURVEY SHOWN HEREON BASED ON OCCUPATION AND MONUMENTATION AS SHOWN. REFERENCED RECORDED PLAT IN LEGAL DESCRIPTION CONTAINS NO PLAT BEARINGS OR DISTANCES.



Gonzalo Rioja
 305.262.0246
 grioja@wilshireag.com

Luis Aguirre
 305.262.0246
 luis@wilshireag.com

5201 Waterford District Dr
 Suite 530
 Miami, FL 33126
 305.262.0246