

**±0.19 Acres of Level Land in California City**



**OFFERING SUMMARY**

Sale Price:	\$22,500
Price/SF:	\$2.25/SF
Lot Size:	0.193 Acres
Lot Size (SF):	8,423 SF
Zoning:	RL: Residential Low
Market:	Indian Wells Valley
Submarket:	Central Ridgecrest
Cross Streets:	79th St & Jimson Ave
APN:	299-051-31-00-0
Seller Carry:	Yes - Available

**PROPERTY HIGHLIGHTS**

- ±0.19 Acres of Level Land | Secure Location
- 65' Wide By 125' Deep (±8,423 SF) | Easy Access
- Seller Carry Financing Available w/ 10% Down!
- Private Setting Minutes Away From Central Park
- Paved Road Frontage Access from North & West
- Quick Access from Nueralia Rd & California City Blvd
- North and South Bound Freeways Nearby
- Close Proximity to California City Airport

**Jared Ennis**  
CalDRE #01945284  
Executive Vice President  
jared@centralcacommercial.com  
559.705.1000

**Kevin Land**  
CalDRE #01516541  
Executive Managing Director  
kevin@centralcacommercial.com  
559.705.1000

**Central CA Commercial**  
Investments | Industrial | Office  
Multifamily | Retail | Land | Specialty  
**CentralCaCommercial.com**

## ±0.19 Acres of Level Land in California City

### PROPERTY DESCRIPTION

Stunning ±0.19 acre (±8,423 SF) corner lot located in central California City near many existing businesses & developments and is within a short walking distance to the school. Nearby developments are upscale with a newer 2006 construction home to the north and a newer 2009 construction home on a similar-sized lot to the east. This property features paved road frontage from the south and east, the electric pole is on the north edge of the property, peaceful walking path within the neighborhood, & the water is at the street. Easy access from California City Blvd within 8 miles of Highway 14. Just minutes to Mojave, 28 miles to Tehachapi, 30 miles to Golden Hills, & 40 miles to Lancaster. Seller will carry loan at reasonable terms with only 10% down!

### LOCATION DESCRIPTION

The property is located north of Heather Ave, east of 77th St, south of Poppy Blvd, and west of Neuralia Rd. With easy access to California City Blvd, it offers beautiful views as well as a secure and private location. California City is a city located in northern Antelope Valley in Kern County, California, United States. It is 100 miles north of the city of Los Angeles, and the population was 14,973 at the 2020 census. Covering 203.63 square miles, California City has the third-largest land area of any city in the state of California, and is the largest city by land area in California that is not a county seat.



**Jared Ennis**

CalDRE #01945284

Executive Vice President

jared@centralcacommercial.com

559.705.1000

**Kevin Land**

CalDRE #01516541

Executive Managing Director

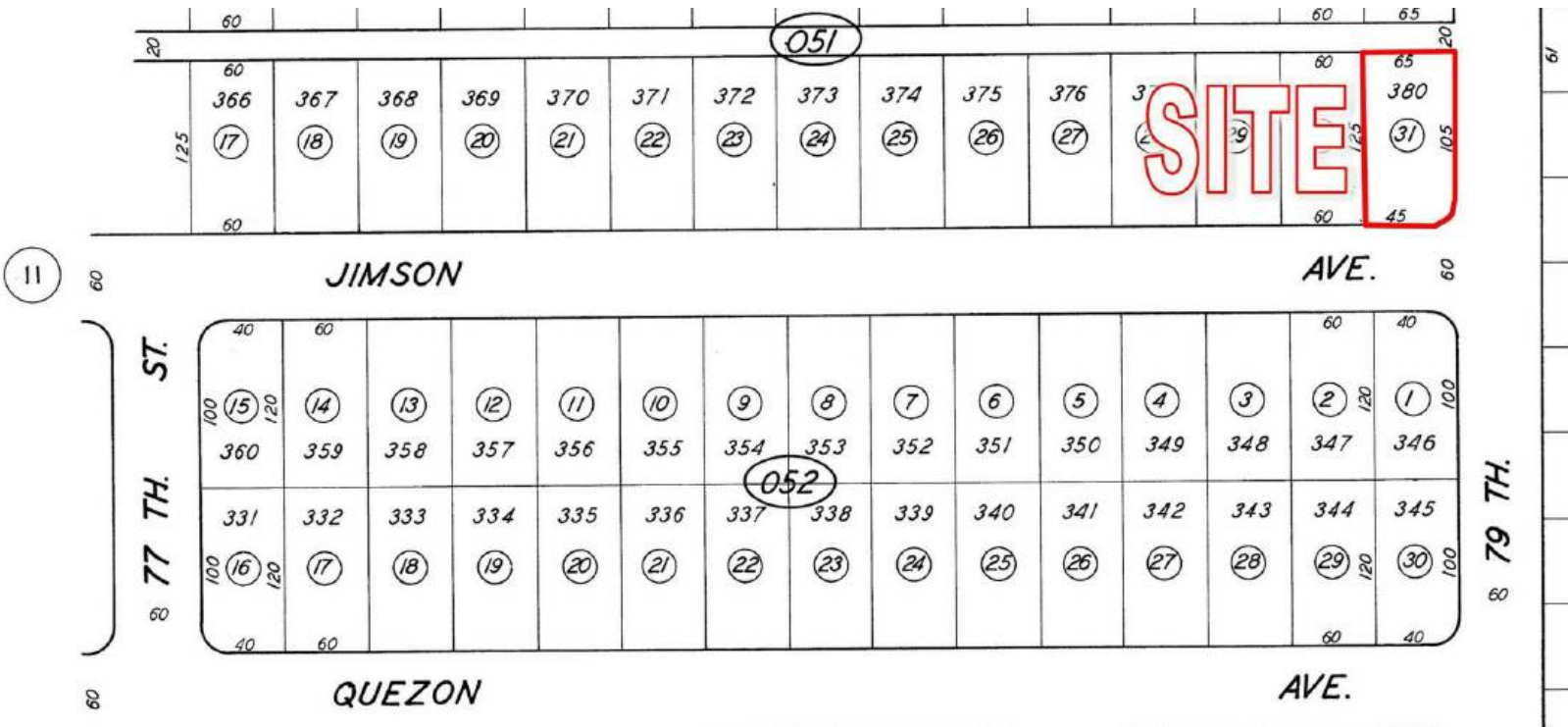
kevin@centralcacommercial.com

559.705.1000

**Central CA Commercial**  
Investments | Industrial | Office  
Multifamily | Retail | Land | Specialty  
**CentralCaCommercial.com**



**±0.19 Acres of Level Land in California City**



**Jared Ennis**  
 CalDRE #01945284  
 Executive Vice President  
 jared@centralcacommercial.com  
 559.705.1000

**Kevin Land**  
 CalDRE #01516541  
 Executive Managing Director  
 kevin@centralcacommercial.com  
 559.705.1000

**Central CA Commercial**  
 Investments | Industrial | Office  
 Multifamily | Retail | Land | Specialty  
**CentralCaCommercial.com**

We obtained the information above from sources we believe to be reliable. However, we have not verified its accuracy and make no guarantee, warranty or representation about it. It is submitted subject to the possibility of errors, omissions, change of price, rental or other conditions, prior sale, lease or financing, or withdrawal without notice. We include projections, opinions, assumptions or estimates for example only, and they may not represent current or future performance of the property. You and your tax and legal advisors should conduct your own investigation of the property and transaction.



**±0.19 Acres of Level Land in California City**



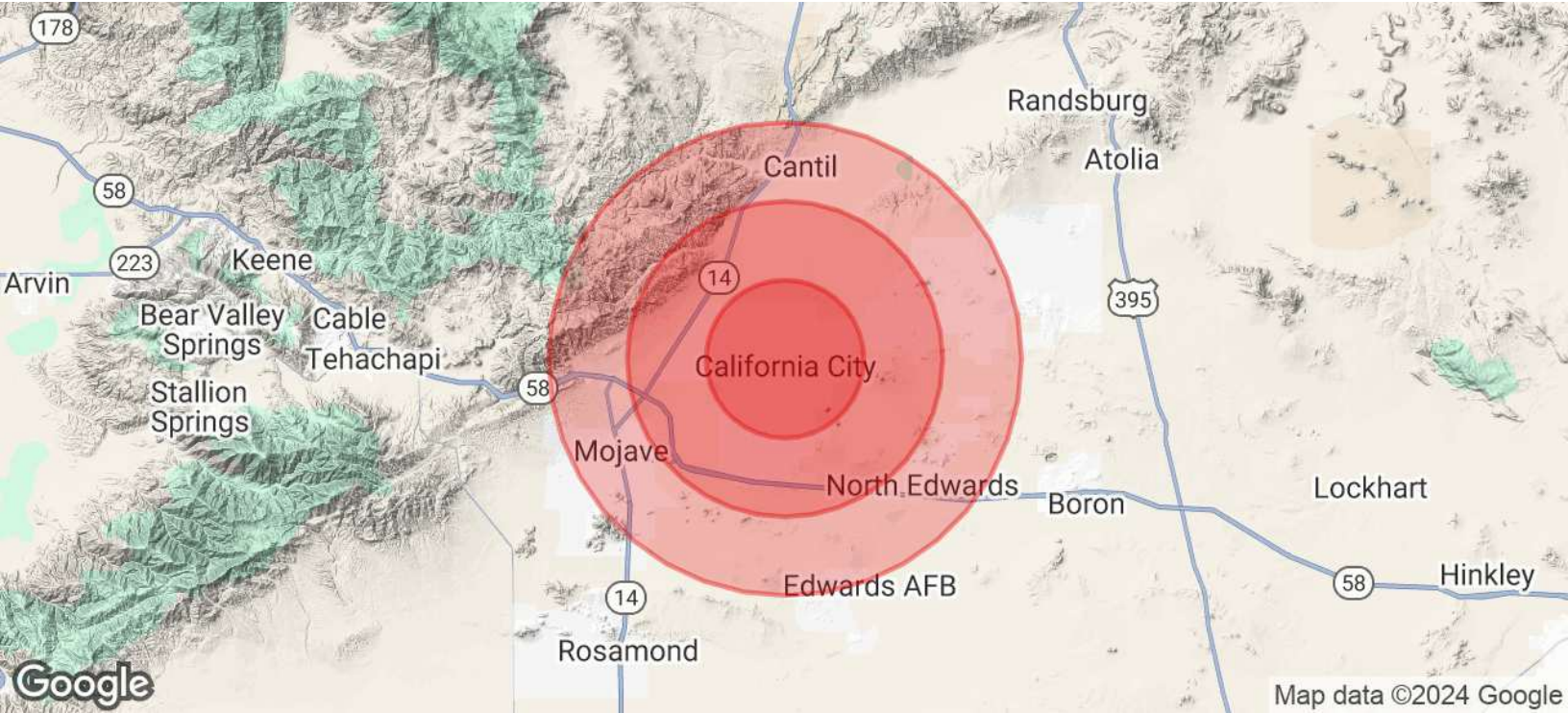
**Jared Ennis**  
CalDRE #01945284  
Executive Vice President  
jared@centralcommercial.com  
559.705.1000

**Kevin Land**  
CalDRE #01516541  
Executive Managing Director  
kevin@centralcommercial.com  
559.705.1000

**Central CA Commercial**  
Investments | Industrial | Office  
Multifamily | Retail | Land | Specialty  
**CentralCaCommercial.com**

We obtained the information above from sources we believe to be reliable. However, we have not verified its accuracy and make no guarantee, warranty or representation about it. It is submitted subject to the possibility of errors, omissions, change of price, rental or other conditions, prior sale, lease or financing, or withdrawal without notice. We include projections, opinions, assumptions or estimates for example only, and they may not represent current or future performance of the property. You and your tax and legal advisors should conduct your own investigation of the property and transaction.

**±0.19 Acres of Level Land in California City**



<b>POPULATION</b>	<b>5 MILES</b>	<b>10 MILES</b>	<b>15 MILES</b>
Total Population	13,031	15,105	23,278
Average Age	37	37	36
Average Age (Male)	37	37	36
Average Age (Female)	38	40	38

<b>HOUSEHOLDS &amp; INCOME</b>	<b>5 MILES</b>	<b>10 MILES</b>	<b>15 MILES</b>
Total Households	4,675	4,912	7,703
# of Persons per HH	2.8	3.1	3
Average HH Income	\$77,091	\$72,684	\$73,381
Average House Value	\$256,545	\$249,065	\$226,105

Demographics data derived from AlphaMap

**Jared Ennis**  
 CalDRE #01945284  
 Executive Vice President  
 jared@centralcacommercial.com  
 559.705.1000

**Kevin Land**  
 CalDRE #01516541  
 Executive Managing Director  
 kevin@centralcacommercial.com  
 559.705.1000

**Central CA Commercial**  
 Investments | Industrial | Office  
 Multifamily | Retail | Land | Specialty  
[CentralCaCommercial.com](http://CentralCaCommercial.com)

We obtained the information above from sources we believe to be reliable. However, we have not verified its accuracy and make no guarantee, warranty or representation about it. It is submitted subject to the possibility of errors, omissions, change of price, rental or other conditions, prior sale, lease or financing, or withdrawal without notice. We include projections, opinions, assumptions or estimates for example only, and they may not represent current or future performance of the property. You and your tax and legal advisors should conduct your own investigation of the property and transaction.