



OFFICE FOR LEASE

1,559 SF, 2,849 SF, 7,850 SF, & 12,000 SF

**1 S. Washington St,
Rochester, NY 14614**

The Washington Building is ideally located with easy access to I-490, the Inner Loop and all the conveniences of downtown such as nearby restaurants, events, and more. The building features a gorgeous lobby with historic charm, elevator access, and plenty of parking.

PROPERTY

highlights

- ✓ Historic Charm
- ✓ Easy Access to I-490
- ✓ Elevator Access
- ✓ Plenty of Parking
- ✓ Ample Natural Light



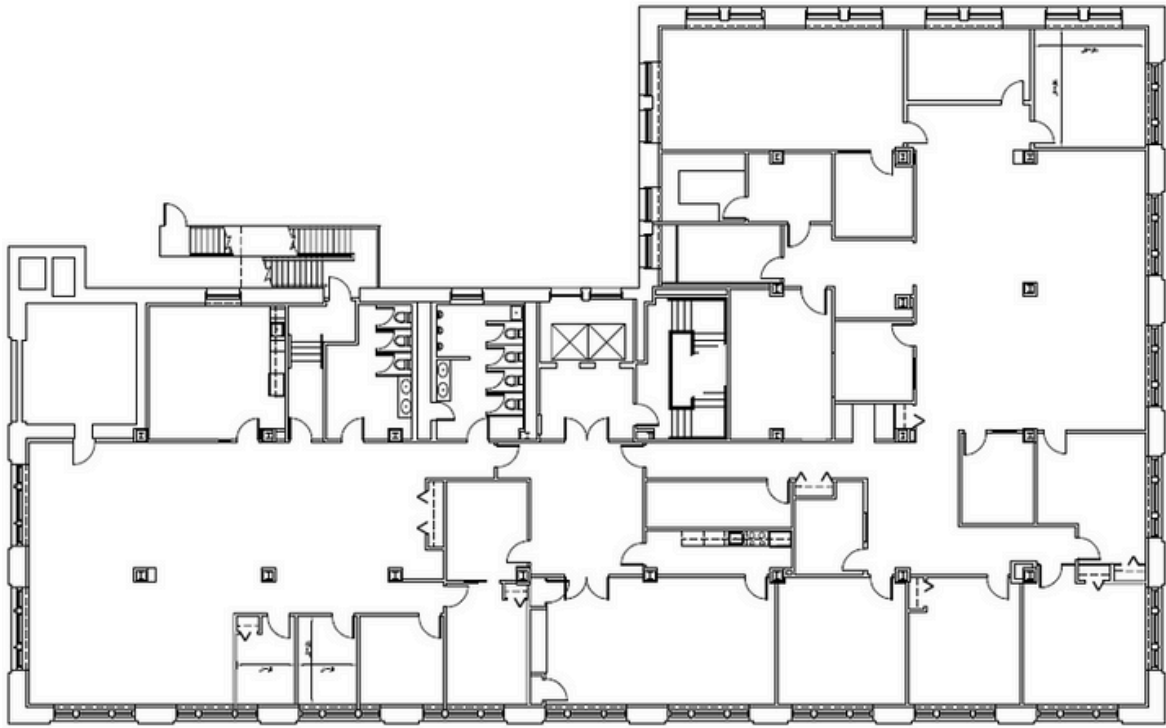
**BUCKINGHAM
PROPERTIES**



ADAM BORRELL

Senior Leasing Executive

(585) 615-3593 | aborrell@buckprop.com



FLOOR 3: **12,000 SF**



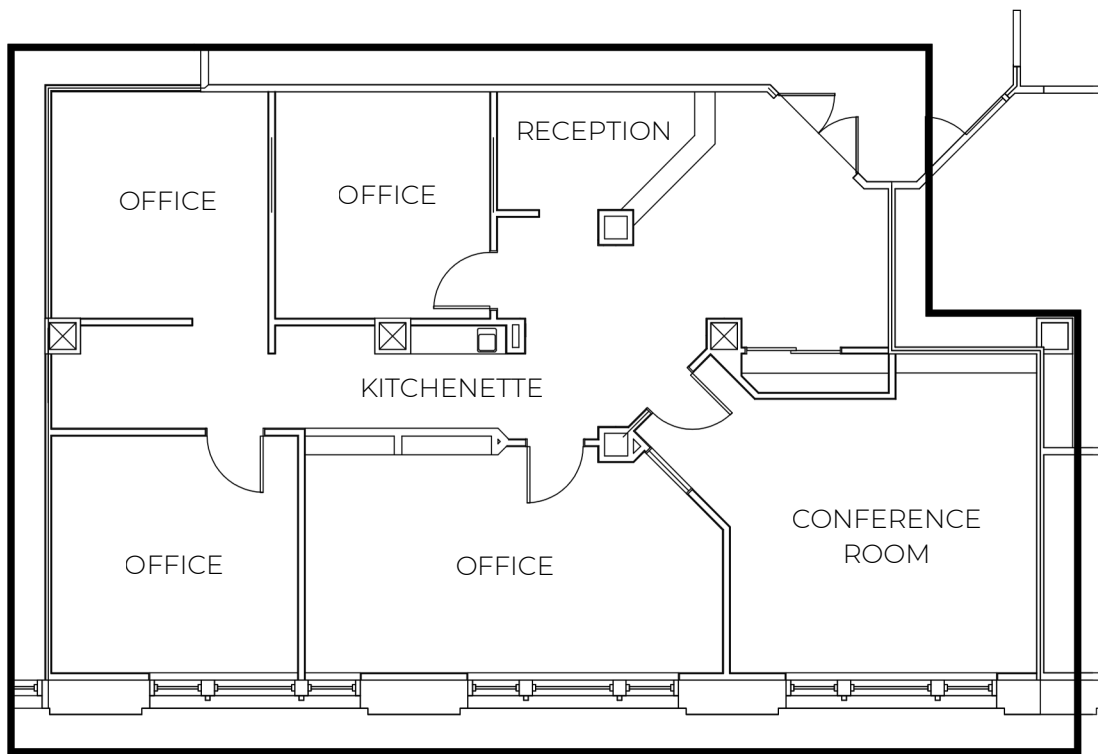
BUCKINGHAM
PROPERTIES



ADAM BORRELL

Senior Leasing Executive

(585) 615-3593 | aborrell@buckprop.com



FLOOR 4 - **1,559 SF**



BUCKINGHAM
PROPERTIES



ADAM BORRELL

Senior Leasing Executive

(585) 615-3593 | aborrell@buckprop.com