



NĀ LAMA KUKUI

Lifestyle and Design Center

Lighting the Fire of Inspiration.

560 N. Nimitz Highway | Honolulu, Hawaii

Property Description

Base Rents by Space Type

\$1.80 – \$2.25 psf/mo
Office Base Rent

\$2.50 – \$3.00 psf/mo
Retail/Showroom Base Rent

\$1.80 – \$2.25 psf/mo
Warehouse Base Rent

Negotiable
Storage Base Rent

A unique choice of office, retail, warehouse, showroom, and storage spaces. Enjoy flexible floor plans with high ceilings and skylights in many spaces which create an open and inviting atmosphere. Affordable tenant parking at \$175 per month per stall with lots of free customer parking.

Features & Benefits

- Flexible floor layout
- Original construction with lots of natural light
- Free customer parking
- High ceilings

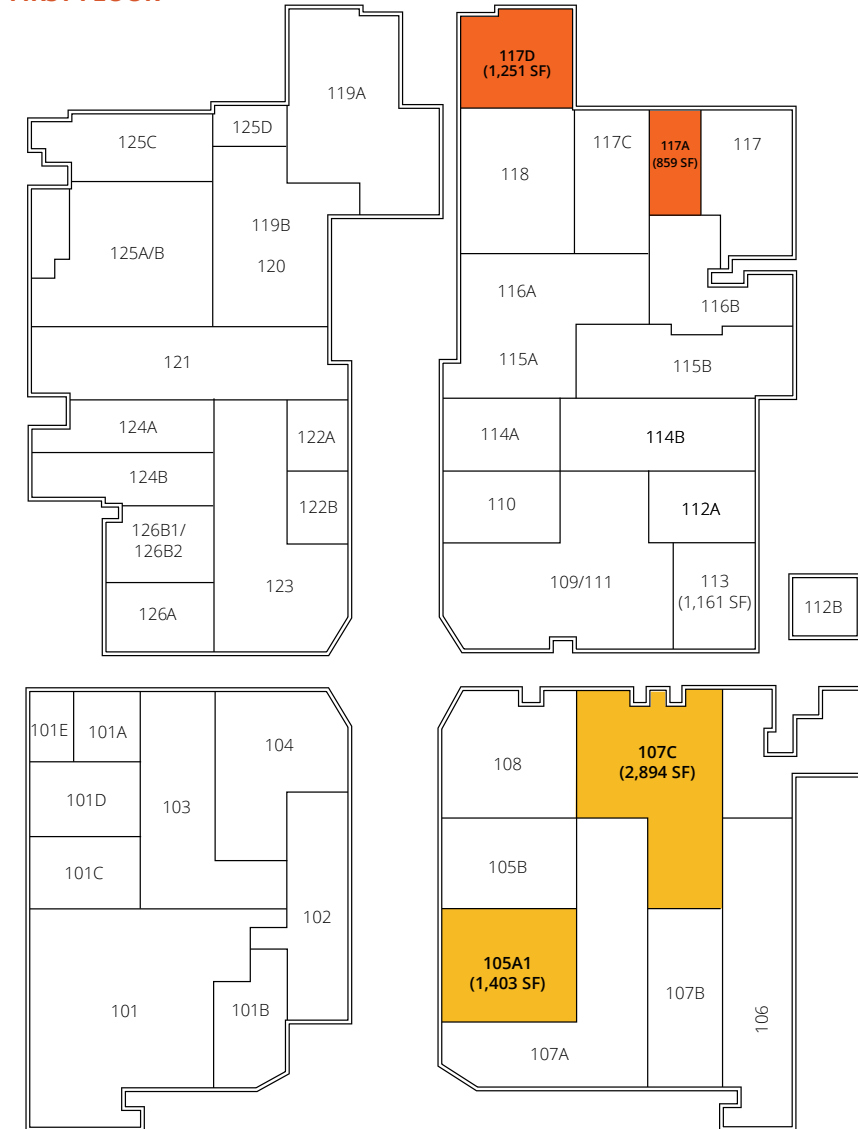
Property Information

(1) 1-5-10-3: 11&12	IMX-1	Negotiable	\$1.22 PSF/Mo
TMK Number	Zoning	Term	Operating Expenses

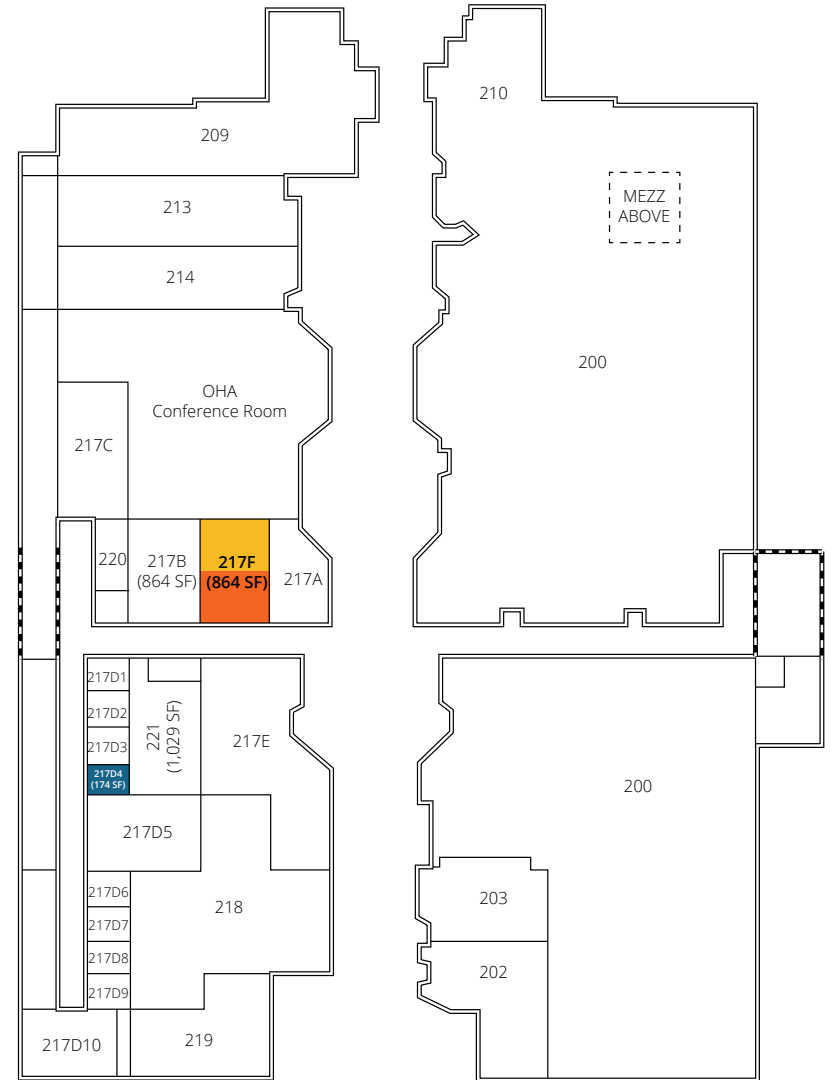


Floor Plans

FIRST FLOOR



SECOND FLOOR





Location Description

3 MIN

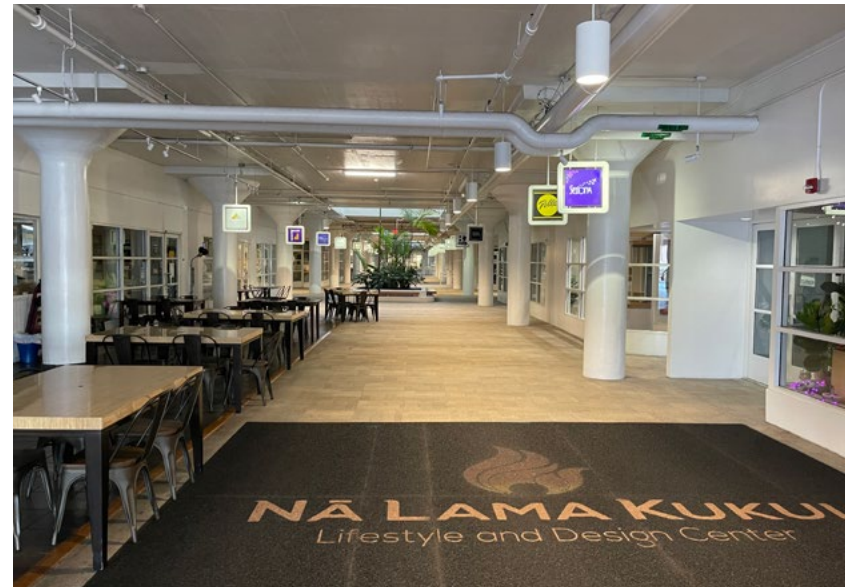
To Downtown Honolulu

13 MIN

To Honolulu International Airport

14 MIN

To Waikiki





For more information,
please contact:



Karen Birkett (S) SIOR
Senior Vice President
Lic# RS-50512
808 523 9729
karen.birkett@colliers.com



220 S. King Street, Suite 1800
Honolulu, Hawaii 96813
808 524 2666
colliers.com

This document has been prepared by Colliers International for advertising and general information only. Colliers International makes no guarantees, representations or warranties of any kind, expressed or implied, regarding the information including, but not limited to, warranties of content, accuracy and reliability. Any interested party should undertake their own inquiries as to the accuracy of the information. Colliers International excludes unequivocally all inferred or implied terms, conditions and warranties arising out of this document and excludes all liability for loss and damages arising there from. This publication is the copyrighted property of Colliers International and/or its licensor(s). ©2025. All rights reserved.