



ABOUT THE PROPERTY

835 East 65th Street (combined units 107 & 109) are available for lease in the highly sought-after Medical Arts area of midtown Savannah, GA. This property is centrally located between Memorial Hospital and Candler Hospital and has been home to a successful dermatology practice for almost 50 years. The current lease structure includes all utilities, taxes, insurance, and POA/pass-through expenses. The tenant is responsible for phone and internet.

While the property can accommodate various uses, its current layout as a medical-administrative office features a large reception area, three exam rooms with sinks, a small lab, a private doctor's office, three restrooms, and ample administrative workspace.

Additionally, there is a private parking lot at the front of the property that can accommodate 14 vehicles. With easy access, excellent visibility, and close proximity to two of the three major hospitals in the area, this opportunity is not expected to last long.

HIGHLIGHTS



\$25 PSF FULL SERVICE LEASE
STRUCTURE



3,154 SQ FT



ZONED B-N
MEDICAL, PROFESSIONAL
OFFICE



PIN'S-20114 01015 &
20114 01016



14 PARKING SPOTS AVAILABLE

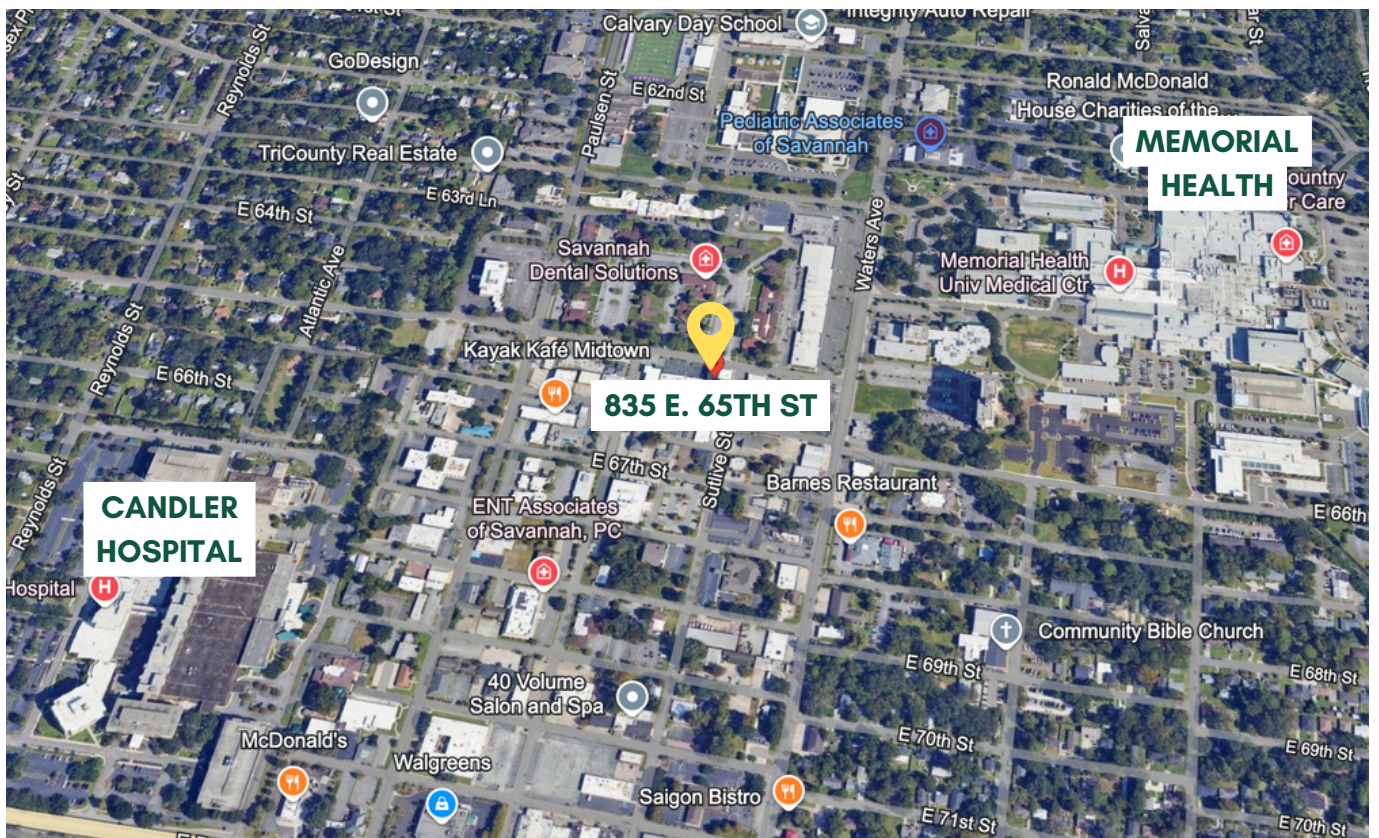


CENTRALLY LOCATED
BETWEEN MEMORIAL HEALTH
AND CANDLER HOSPITAL

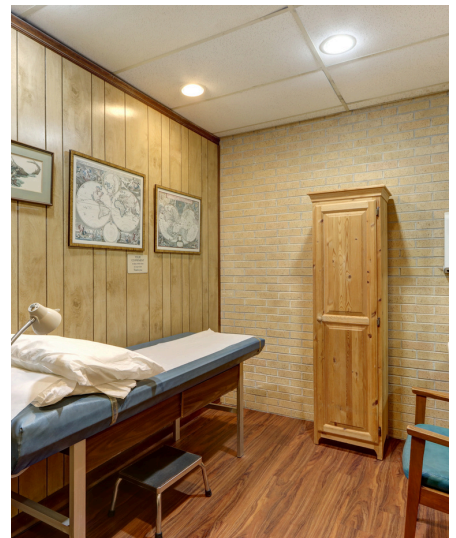
EXTERIOR IMAGE



LOCATION MAP



INTERIOR IMAGES





TRAVEL DISTANCES

0.5 MILES TO MEMORIAL HEALTH

0.7 MILES TO CANDLER HOSPITAL

0.9 MILES TO TRUMAN PARKWAY

6 MILES TO ST. JOSEPH'S HOSPITAL

FLOOR PLAN

