

For Sale or for Lease

Full-Building User Opportunity



centrepark

Inquire for Pricing

Building Signage Available



[View Property Video](#)

1801 Centrepark Drive East, West Palm Beach, FL 33401



COLONNADE

CBRE



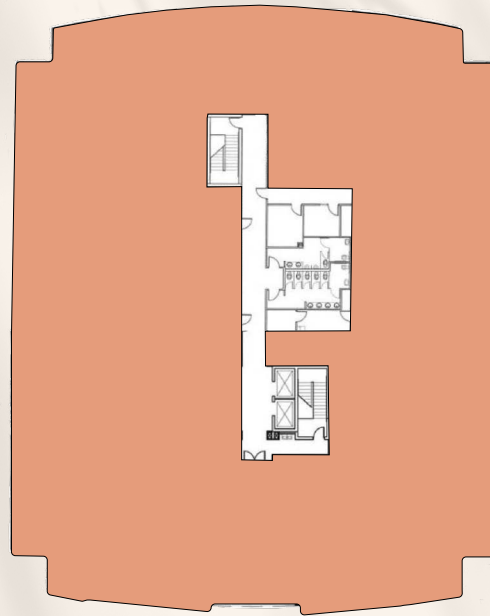


centrepark

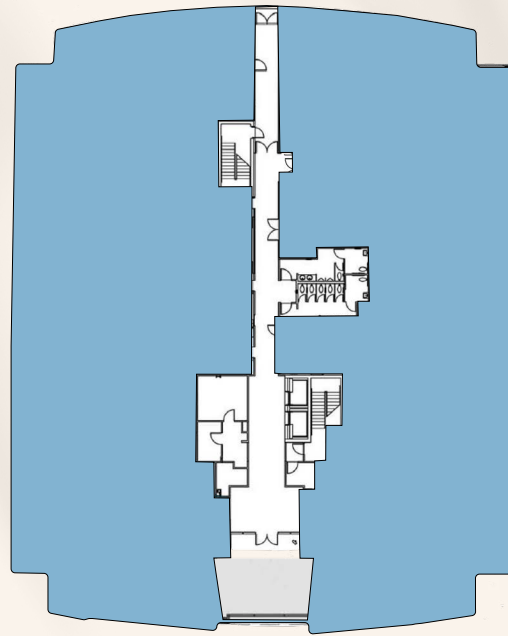


## Floor Plates

Total 41,902 SF



2nd Floor  
20,951 SF



1st Floor  
20,951 SF

## Highlights



Ample Parking  
146 total spaces available



Security

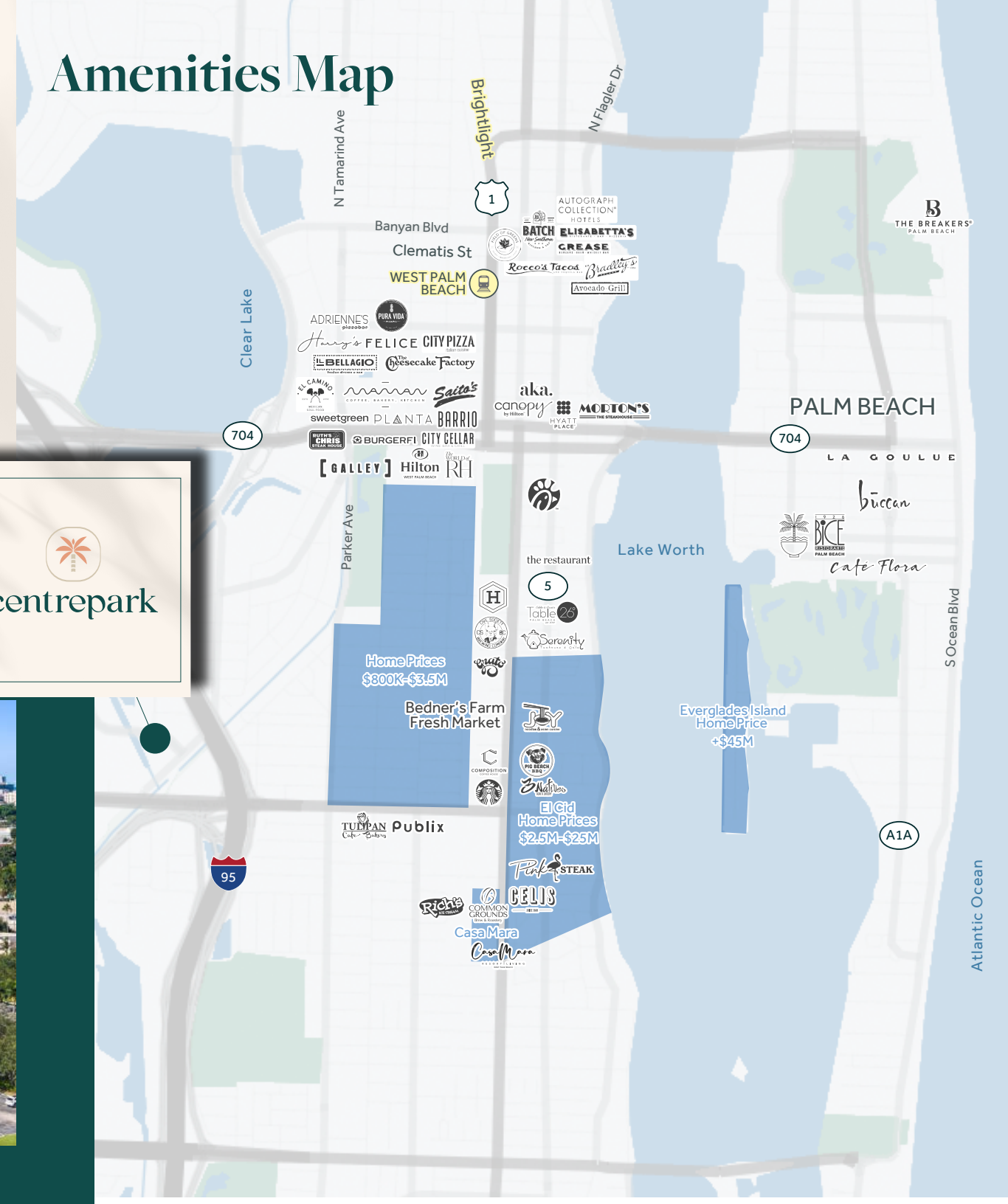


Park-Like Setting  
with Pond



Minutes From  
Downtown WPB,  
Palm Beach  
International  
Airport & I-95

## Amenities Map







# centrepark

WEST PALM BEACH, FL 33401

PALM BEACH  
ISLAND

DOWNTOWN  
WEST PALM BEACH

CITY PLACE  
WEST PALM BEACH

1801

1801 CENTREPARK DRIVE EAST

**John Criddle**

+1 561 283 5176

john.criddle@cbre.com

**Joe Freitas**

+1 561 512 8844

joe.freitas@cbre.com

**Max Pawk**

+1 561 393 1670

max.pawk@cbre.com

**Nick Mulligan**

+1 561 393 1680

nicholas.mulligan@cbre.com



COLONNADE

**CBRE**

© 2025 CBRE, Inc. All rights reserved. This information has been obtained from sources believed reliable, but has not been verified for accuracy or completeness. You should conduct a careful, independent investigation of the property and verify all information. Any reliance on this information is solely at your own risk. CBRE and the CBRE logo are service marks of CBRE, Inc. All other marks displayed on this document are the property of their respective owners, and the use of such logos does not imply any affiliation with or endorsement of CBRE. Photos herein are the property of their respective owners. Use of these images without the express written consent of the owner is prohibited.