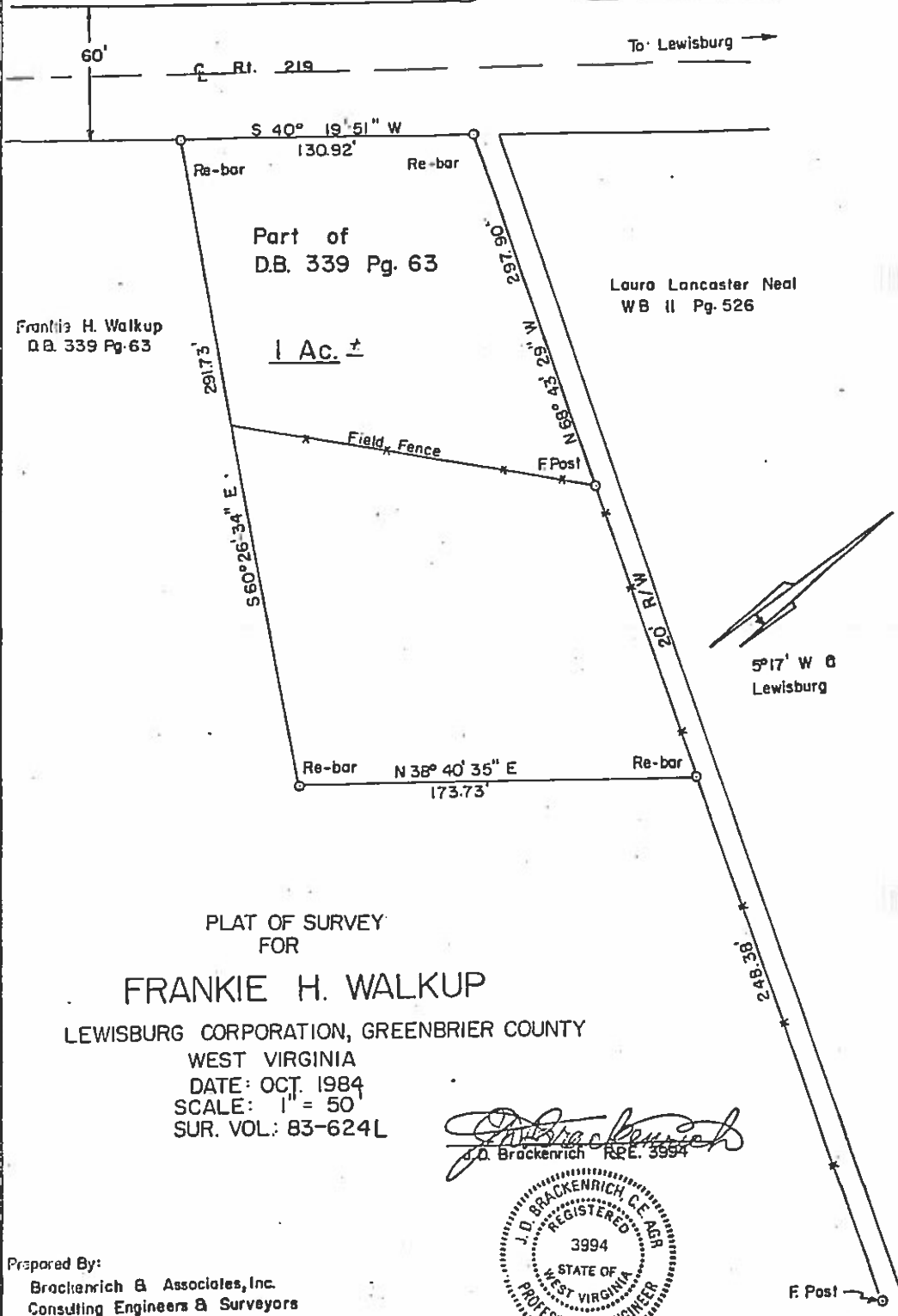


Brush Road



Frankie H. Walkup
D.B. 339 Pg. 63

Part of
D.B. 339 Pg. 63

1 Ac. ±

Lauro Lancaster Neal
WB II Pg. 526

5°17' W @
Lewisburg

PLAT OF SURVEY
FOR

FRANKIE H. WALKUP

LEWISBURG CORPORATION, GREENBRIER COUNTY

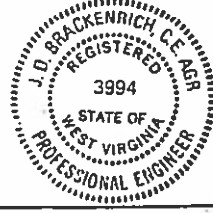
WEST VIRGINIA

DATE: OCT. 1984

SCALE: 1" = 50'

SUR. VOL: 83-624L

J.D. Brackenrich
J.D. Brackenrich R.E. 3994



Prepared By:
Brackenrich & Associates, Inc.
Consulting Engineers & Surveyors
Lewisburg - Sutton, WV

F Post