



M. BARRY SCHULTZ AND CO.
REAL ESTATE DEVELOPMENT • BROKERAGE • MANAGEMENT

Up to 3,400 sf Retail Space - Endcap

McKeown's Plaza Shopping Center -6810 Rising Sun Ave.

Located in densely populated NE Philly!

Join Wawa, Sherwin Williams, Wine & Spirits, Enterprise and more!



- **Strong National Co-Tenancy and Excellent Visibility**
- **Retail Endcap with Street Frontage**
- **Unique Off-Street Parking in dense NE Philly market**

Demographic Snapshot (Source: Crexi)*

	<u>1 Mile</u>	<u>3 Miles</u>	<u>5 Miles</u>
Population:	72,800	466,100	974,300
HH Income:	\$62,900	\$58,400	\$59,100
Daytime Employees:	55,100	356,000	782,200

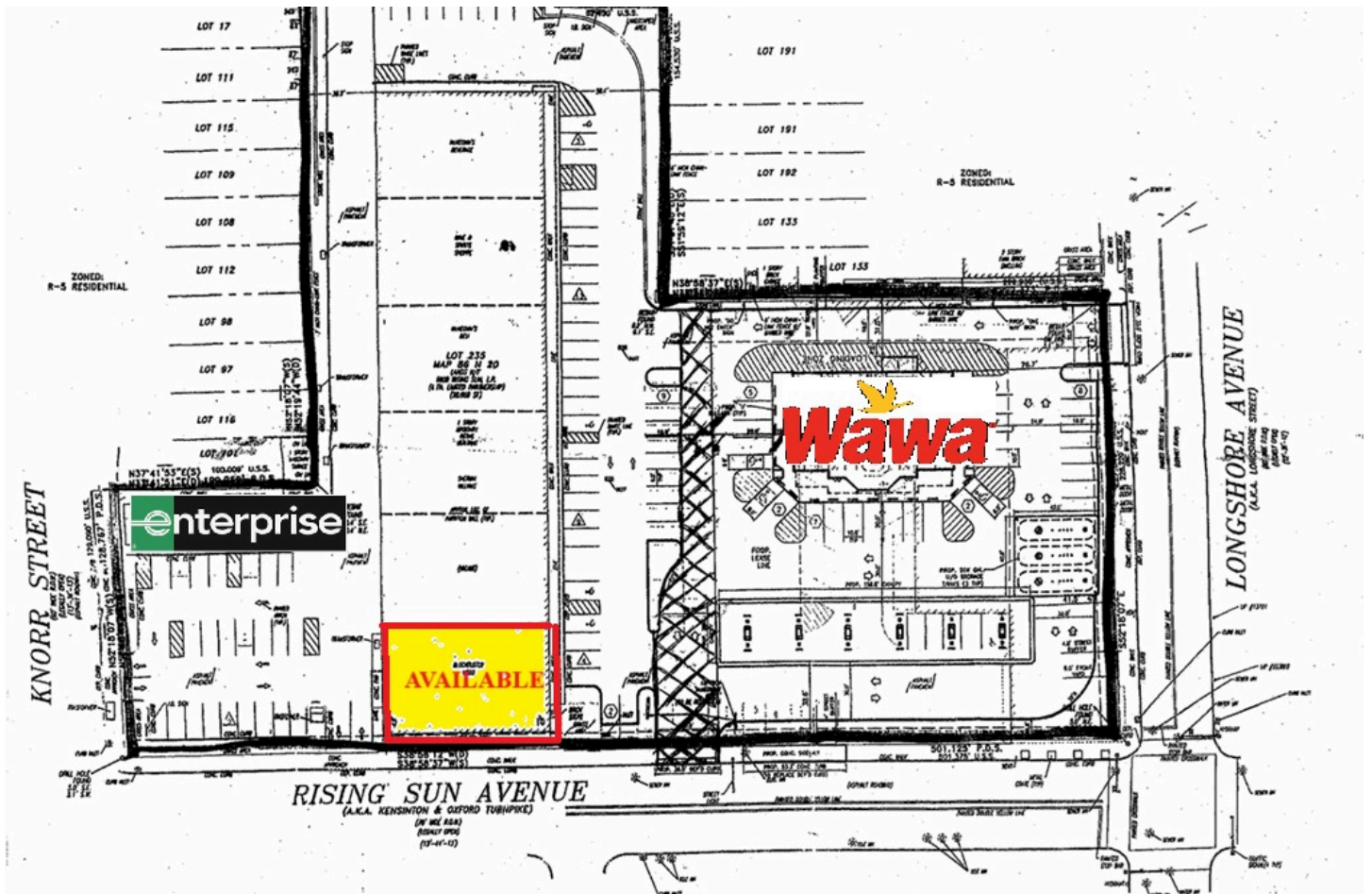
For more information contact:

Janell Houghton (215) 364-1000

janell@mbarryschultzandco.com

Disclaimer: The information in this correspondence is deemed correct and accurate from the owner and other sources from which it was obtained. All information is subject to changes, errors, omissions and removal from the market without notice.

SITE PLAN



LOCATION MAP

