

1681 MAPLELANE AVENUE
HAZEL PARK, MICHIGAN

INDUSTRIAL FOR LEASE
19,810 Square Feet Available



**SIGNATURE
ASSOCIATES**
KNOW SIGNATURE | KNOW RESULTS



PROPERTY FEATURES

- 19,810 square feet available
- 3,000 square feet office
- 18' clear height
- (4) 10' x 12', 8' x 10' grade level doors
- (3) truckwells
- 600 amps, 220 volts, 3-phase power
- Excellent warehouse facility
- Newer office
- Fully air-conditioned
- Lease Rate: \$8.50/sq. ft. NNN



For more information, please contact:

JOE STACK
(248) 359 0615
jstack@signatureassociates.com

MARVIN PETROUS
(248) 359 0647
mpetrous@signatureassociates.com

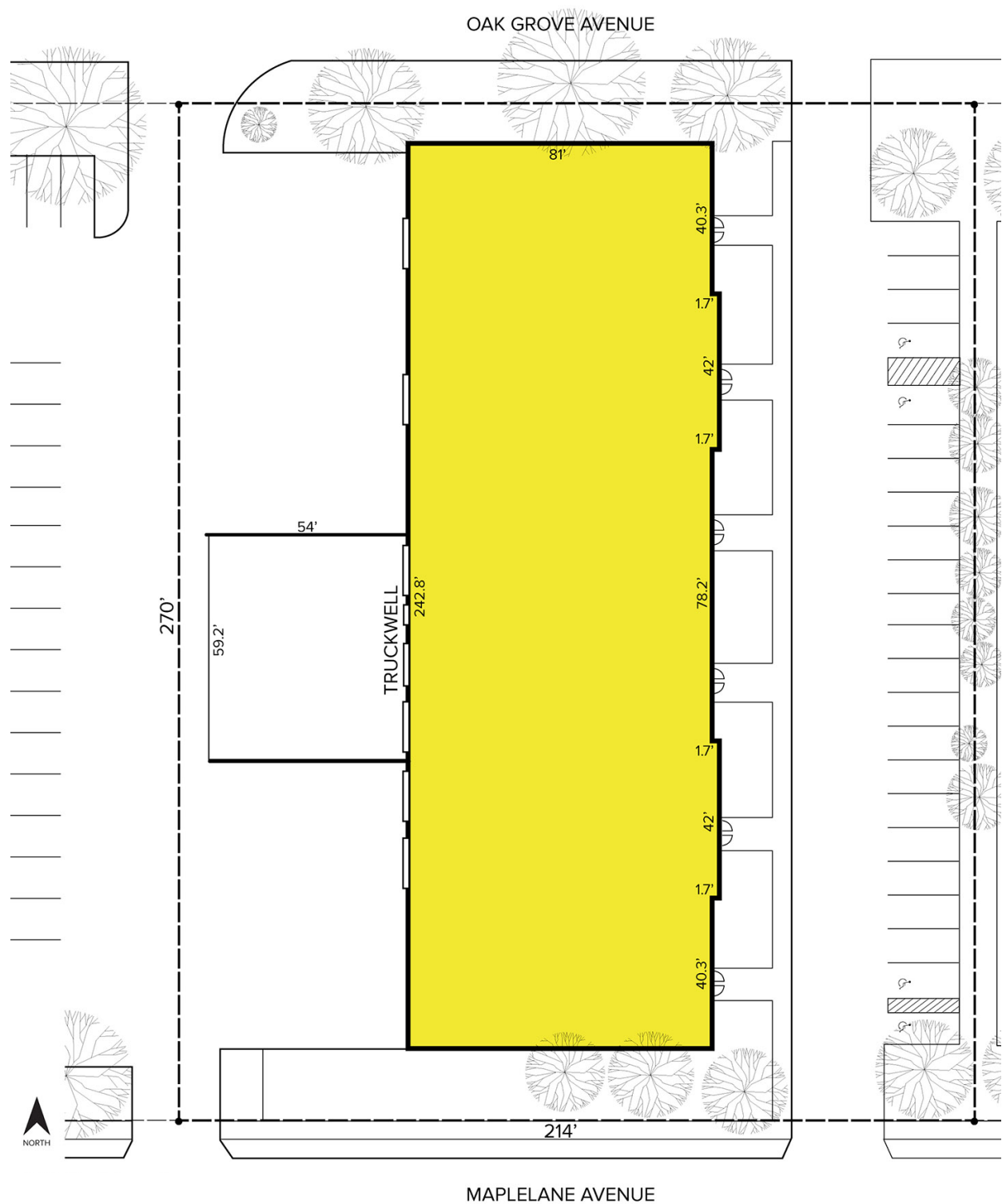
SIGNATURE ASSOCIATES
One Towne Square, Suite 1200
Southfield, MI 48076
www.signatureassociates.com

1681 Maplelane Avenue – Hazel Park, Michigan

Industrial For Lease

19,810
Square Feet
AVAILABLE

Site Plan



For more information, please contact:

JOE STACK
(248) 359 0615
jstack@signatureassociates.com

MARVIN PETROUS
(248) 359 0647
mpetrous@signatureassociates.com

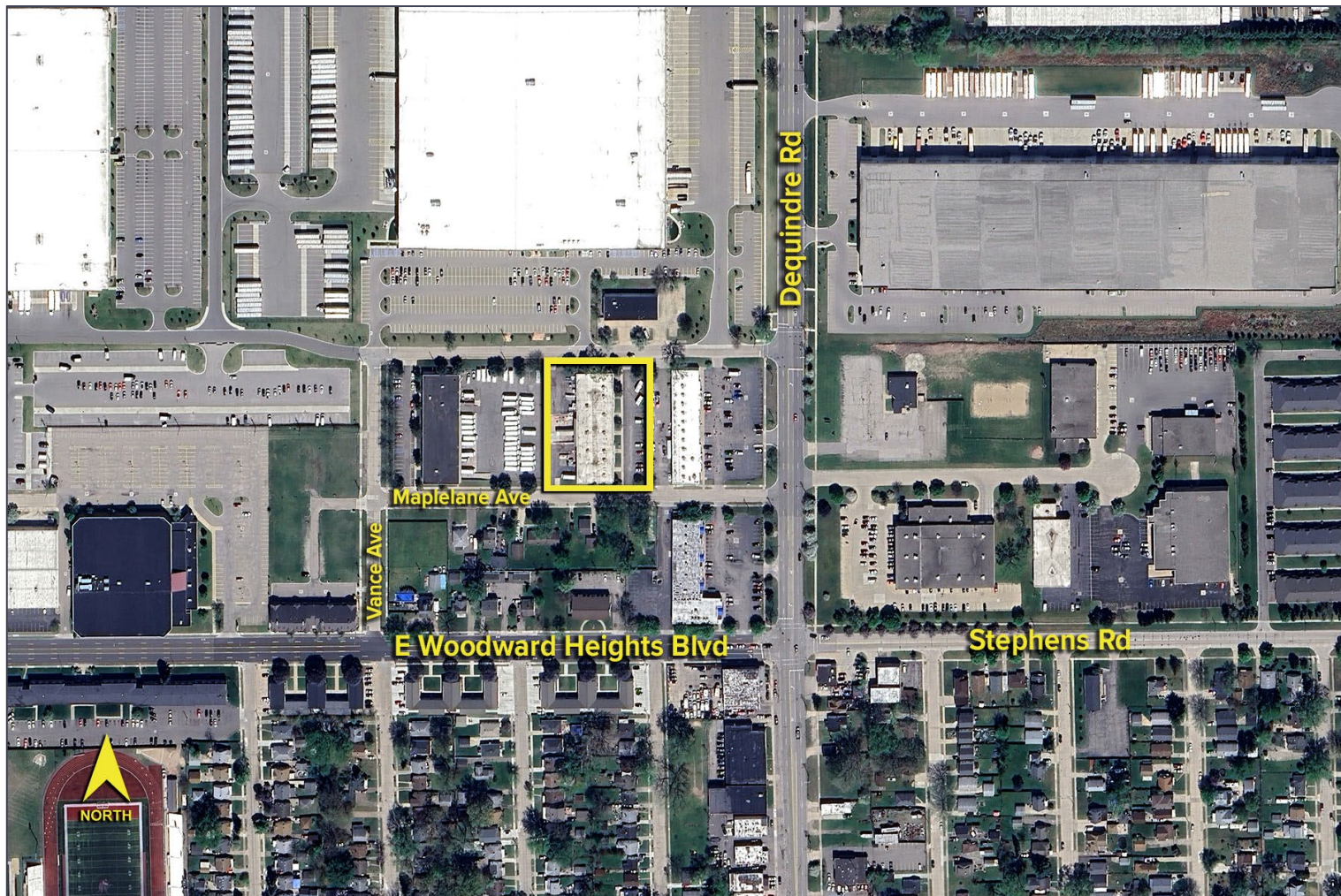
SIGNATURE ASSOCIATES
One Towne Square, Suite 1200
Southfield, MI 48076
www.signatureassociates.com

1681 Mapelane Avenue – Hazel Park, Michigan

Industrial For Lease

19,810
Square Feet
AVAILABLE

Aerial



For more information, please contact:

JOE STACK
(248) 359 0615
jstack@signatureassociates.com

MARVIN PETROUS
(248) 359 0647
mpetrous@signatureassociates.com

SIGNATURE ASSOCIATES
One Towne Square, Suite 1200
Southfield, MI 48076
www.signatureassociates.com

Information is subject to verification and no liability for errors or omissions is assumed. Price is subject to change and listing withdrawal.