

15203 - 15211 8<sup>th</sup> Ave S | Burien, WA

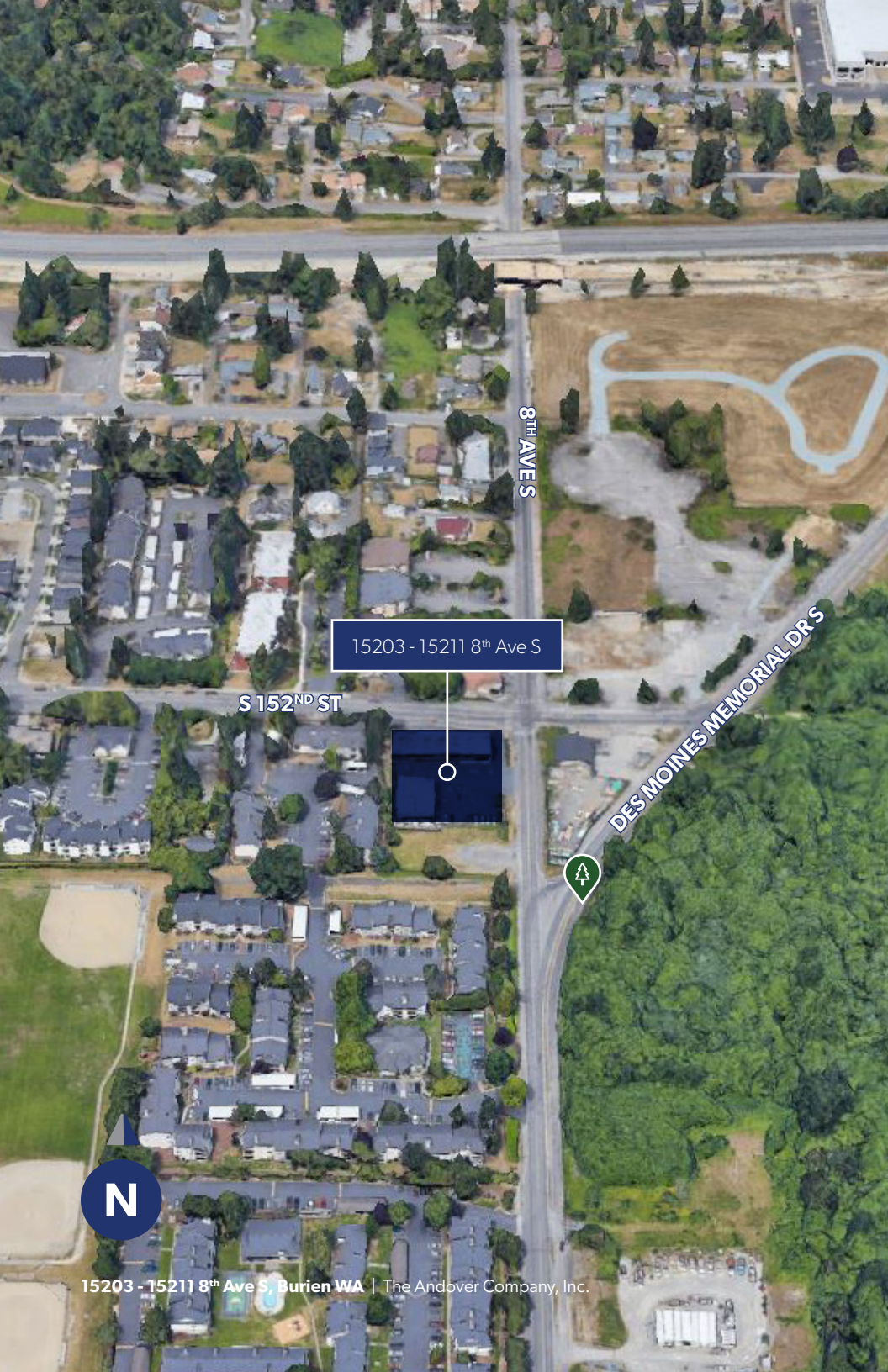
# FOR LEASE

**1,200 SF - 3,400 SF  
of Medical/Dental  
Office Space**



 THE ANDOVER  
COMPANY, INC.  
CORFAC INTERNATIONAL

ARNE SVENDSEN  
(206) 336-5331  
[asvensen@andoverco.com](mailto:asvensen@andoverco.com)



# PROPERTY HIGHLIGHTS



MEDICAL/DENTAL OFFICE W/ EXAM ROOMS



OTHER OFFICE USES SUCH AS SALON, SPA AND ESTHETICIAN OFFICE



NEARBY MEDICAL CENTERS INCLUDE: ST. ANNE HOSP., FRANCISCAN HEALTH & KAISER PERMANENTE



W/S/G INCLUDED IN NNN



FREE ON-SITE PARKING



CONVENIENT TO ALL FREEWAYS



CLOSE TO SEATAC AIRPORT

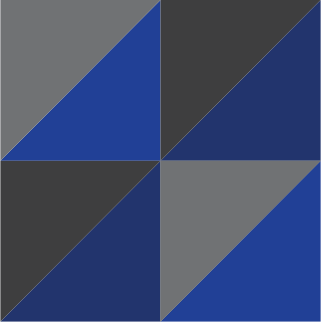


CLOSE TO TUKWILA STATION COMMUTER RAIL



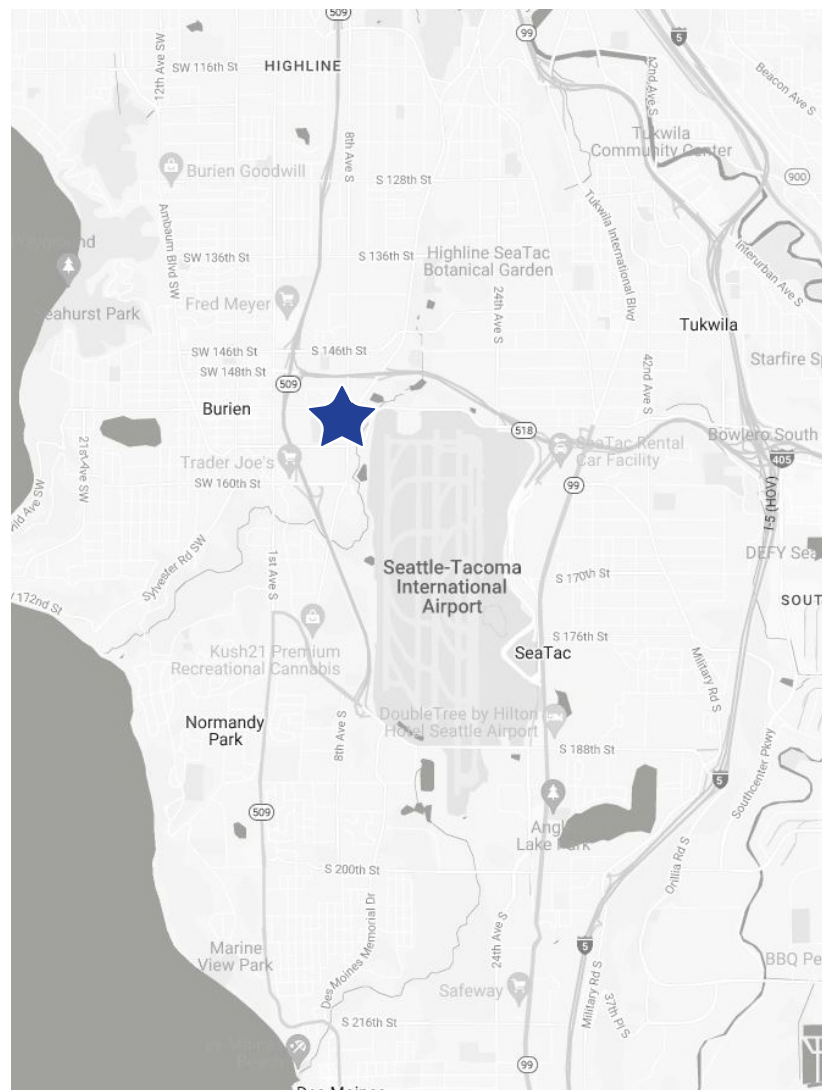
TOTAL BUILDING SIZE: 14,768 SF

N



15203 - 15211

8th Avenue South  
Burien, WA



15203 - 15211 8th Ave S, Burien WA | The Andover Company, Inc.



# AVAILABLE SPACES

1,200 SF - 3,400 SF

SUITE	TOTAL SF	BASE RENT	EST. NNN'S	TOTAL RENT
15211	2,200	\$3,300	\$557	\$3,857
15209	1,200	\$1,800	\$337	\$2,137
15209 + 15211	3,400	\$5,100	\$894	\$5,994

# UNIT 15209

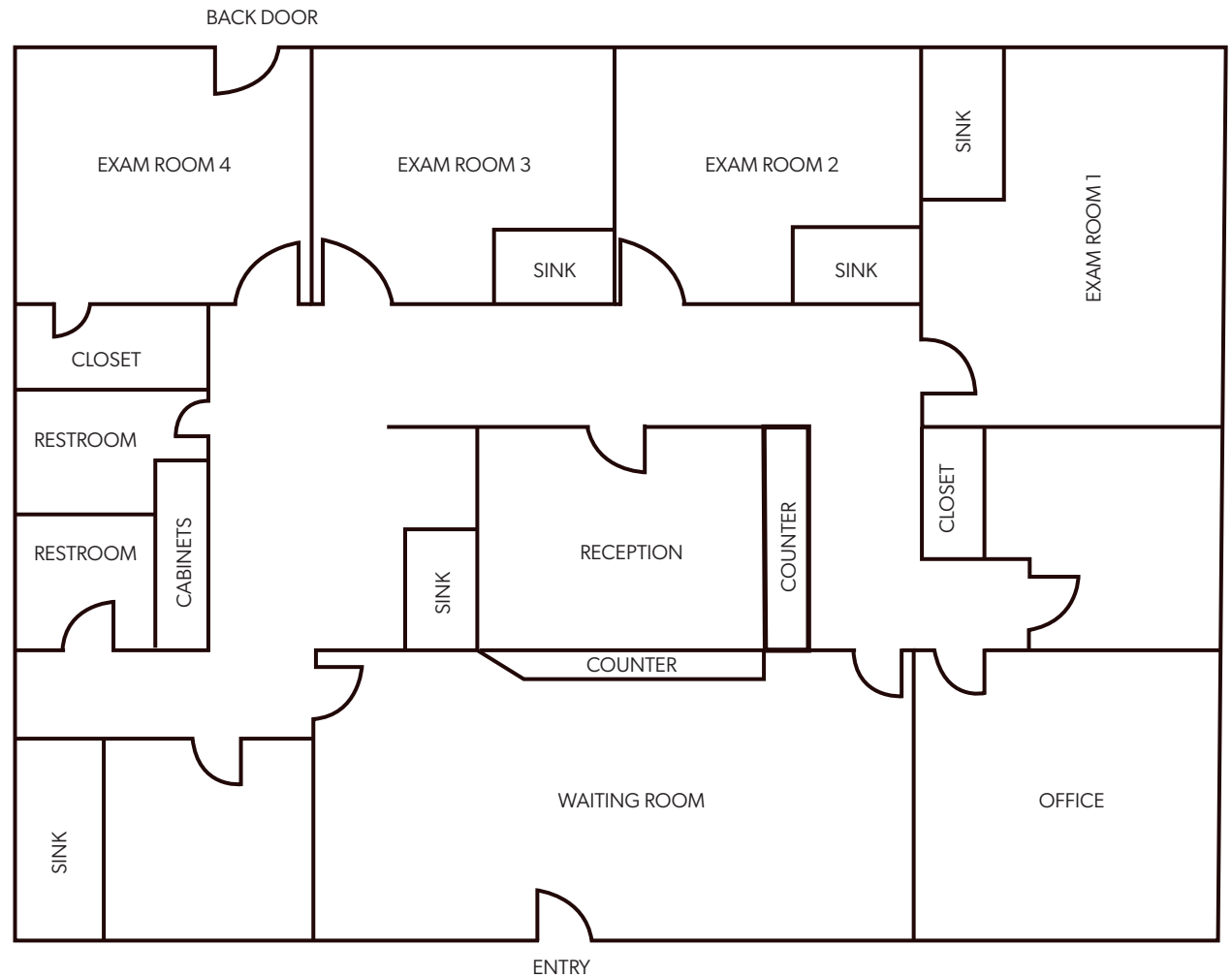
AVAILABLE: NOW

LEASE TYPE: NNN

ELECTRICITY: PAID BY TENANT

SPACE AVAILABLE: 1,200 SF

TOTAL BLDG SIZE: 14,768 SF



**ARNE SVENDSEN**  
(206) 947-2885  
asvensen@andoverco.com



# UNIT 15211

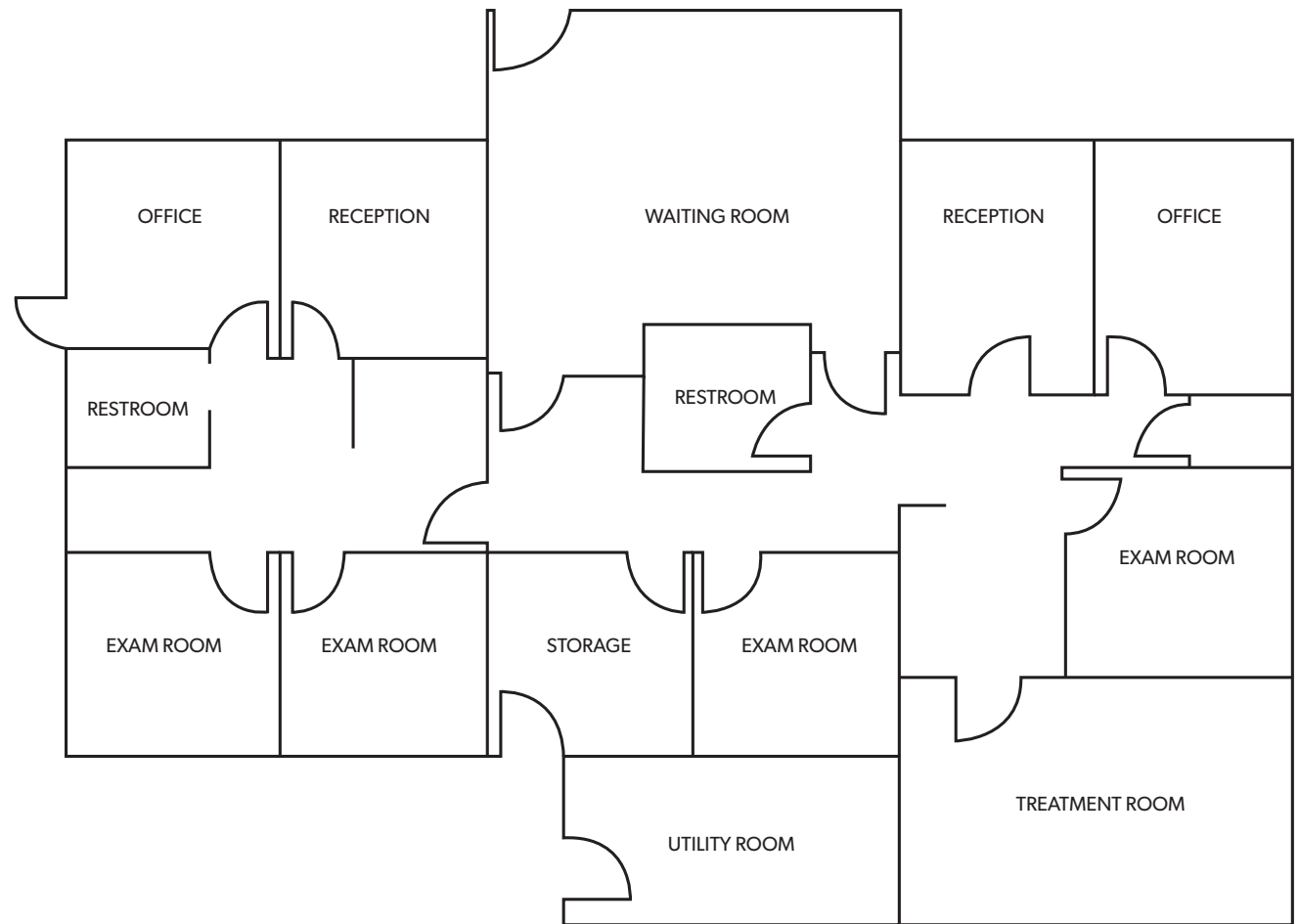
AVAILABLE: NOW

LEASE TYPE: NNN

ELECTRICITY: PAID BY TENANT

SPACE AVAILABLE: 2,200 SF

TOTAL BLDG SIZE: 14,768 SF



**ARNE SVENDSEN**  
(206) 947-2885  
asvensen@andoverco.com



