

BURNSIDE TROLLEY BUILDING

2705 E Burnside Street | Portland OR 97214

FOR LEASE



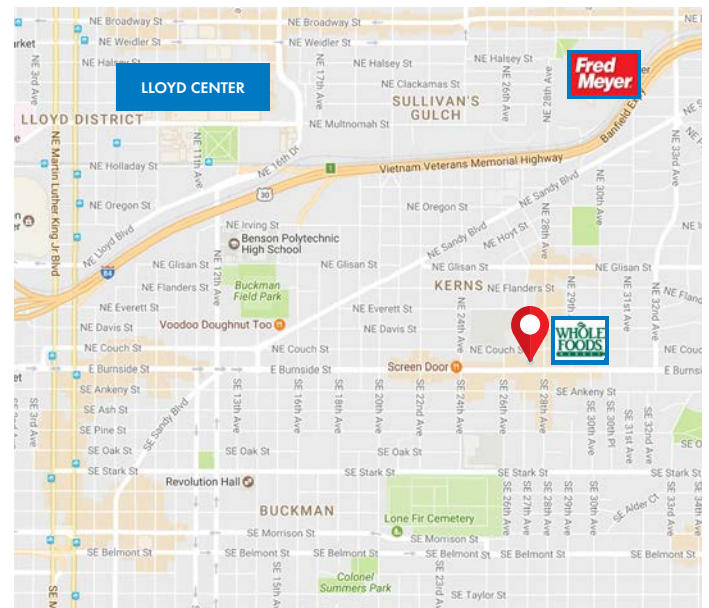
OFFICE SPACE AVAILABLE FOR LEASE

DETAILS

- Suite 214: ± 1,641 RSF
- Lease rate: \$3,800/month, FS

FEATURES

- Classic brick exterior
- Secure building with 24/7 access
- 2 level building, elevator served
- On-site parking with 1/1,000 ratio
- Along E Burnside Street next to Starbucks and Whole Foods
- Popular NE 28th/Burnside area
- Rare office suites close-in



06.09.2025

For more information or a property tour, please contact:

DUANE LINK

503.225.8465

Duanel@norris-stevens.com



Information contained herein has been obtained from others and considered to be reliable; however, a prospective purchaser or lessee is expected to verify all information to their own satisfaction.

Norris & Stevens

INVESTMENT REAL ESTATE SERVICES

900 SW 5th Avenue • 17th Floor • Portland, OR 97204
503.223.3171 • norris-stevens.com

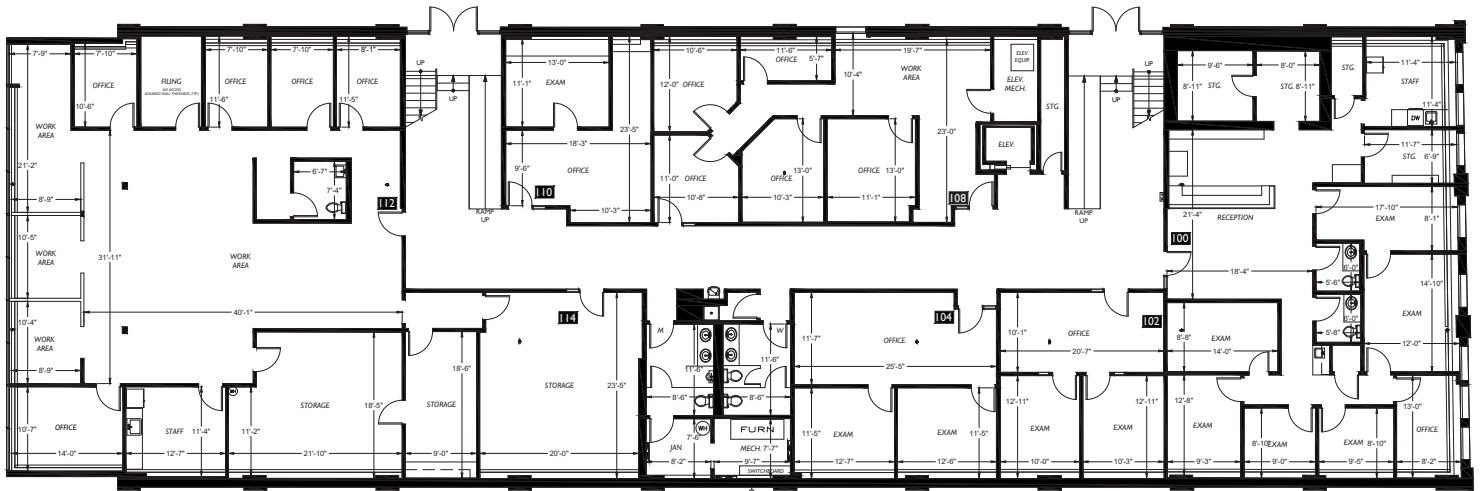
BURNSIDE TROLLEY BUILDING

2705 E Burnside Street | Portland OR 97214

FOR LEASE

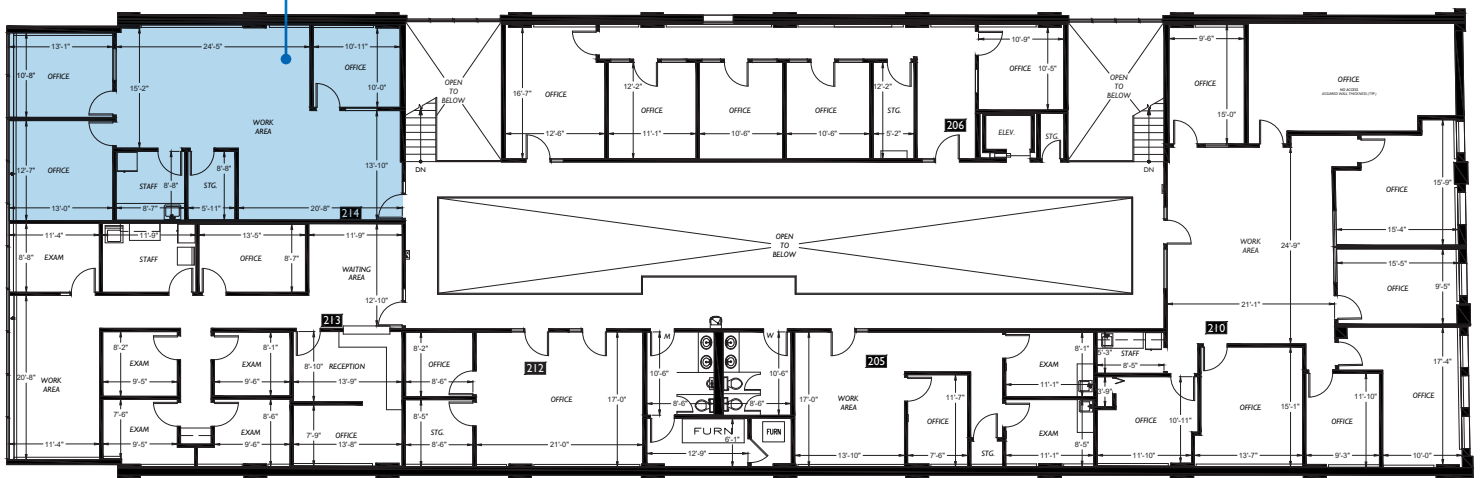
PLANS / PHOTOS

FIRST FLOOR



Suite 214
± 1,641 SF

SECOND FLOOR



For more information or a property tour, please contact:

DUANE LINK

503.225.8465

Duanel@norris-stevens.com



Information contained herein has been obtained from others and considered to be reliable; however, a prospective purchaser or lessee is expected to verify all information to their own satisfaction.

Norris & Stevens

INVESTMENT REAL ESTATE SERVICES

900 SW 5th Avenue • 17th Floor • Portland, OR 97204

503.223.3171 • norris-stevens.com