



# FOR LEASE | ±2,600 SF OFFICE SPACE

## 1523 W. WHISPERING WIND DR. | SUITE 200 | PHOENIX, AZ

FOR MORE INFORMATION PLEASE CONTACT:

**CHASE HEINEMANN**  
Senior Vice President  
P: 602.575.2333 | M: 602.689.4071  
E: [CHeinemann@daumcre.com](mailto:CHeinemann@daumcre.com)

**BOB LUNDSTEDT**  
Executive Vice President  
P: 602.575.2311 | M: 602.363.7238  
E: [RLundstedt@daumcre.com](mailto:RLundstedt@daumcre.com)

**SKIP CORLEY**  
Executive Vice President  
P: 602.575.2303 | M: 602.469.5340  
E: [SCorley@daumcre.com](mailto:SCorley@daumcre.com)

**DAUM**  
COMMERCIAL REAL ESTATE SERVICES

Although all information is furnished regarding for sale, rental or financing is from sources deemed reliable, such information has not been verified and no express representation is made nor is any to be implied as to the accuracy thereof, and it is submitted subject to errors, omissions, changes of price, rental or other conditions, prior sale, lease or financing, or withdrawal without notice. All Maps provided courtesy of Google Maps, Bing Maps, and Google Earth. D/AQ Corp. # 01129558

# PROPERTY HIGHLIGHTS



FULLY RENOVATED  
WITHIN THE YEAR



SUITE 200  
±2,600 SF AVAILABLE



4  
PRIVATE OFFICES



LARGE  
BULLPEN AREA



CONFERENCE ROOM  
W/ MULTIMEDIA WIRING



SERVER ROOM W/  
DEDICATED COOLING SYSTEM

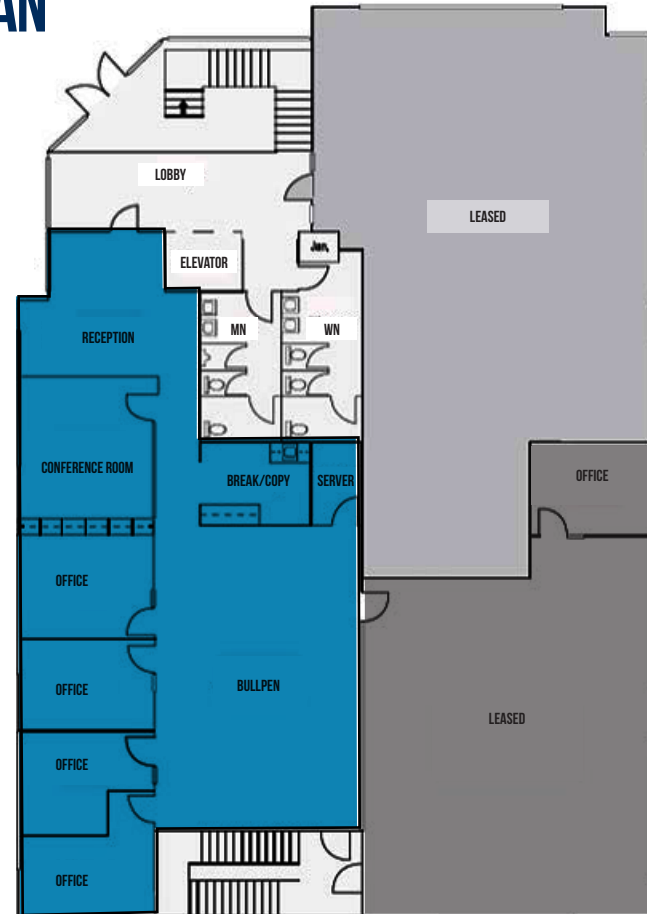


NATURAL  
LIGHT



KITCHEN W/ SINK &  
BUILT-IN CABINETRY

# FLOOR PLAN



\*NOT TO SCALE

# FOR LEASE | ±2,600 SF OFFICE SPACE

## 1523 W. WHISPERING WIND DR. | SUITE 200 | PHOENIX, AZ

# ABOUT

FOR MORE INFORMATION PLEASE CONTACT:

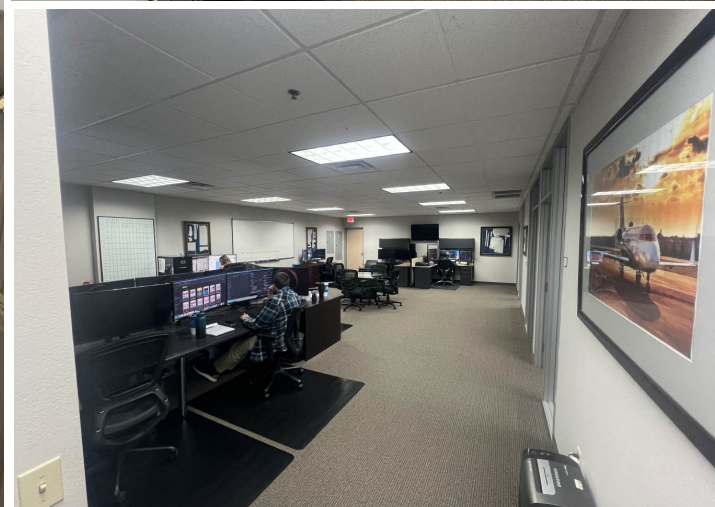
**CHASE HEINEMANN**  
Senior Vice President  
P: 602.575.2333 | M: 602.689.4071  
E: CHeinemann@daumcre.com

**BOB LUNDSTEDT**  
Executive Vice President  
P: 602.575.2311 | M: 602.363.7238  
E: RLundstedt@daumcre.com

**SKIP CORLEY**  
Executive Vice President  
P: 602.575.2303 | M: 602.469.5340  
E: SCorley@daumcre.com

  
COMMERCIAL REAL ESTATE SERVICES

Although all information is furnished regarding for sale, rental or financing is from sources deemed reliable, such information has not been verified and no express representation is made nor is any to be implied as to the accuracy thereof, and it is submitted subject to errors, omissions, changes of price, rental or other conditions, prior sale, lease or financing, or withdrawal without notice. All Maps provided courtesy of Google Maps, Bing Maps, and Google Earth. D/AQ Corp. # 01129558



# FOR LEASE | ±2,600 SF OFFICE SPACE

## 1523 W. WHISPERING WIND DR. | SUITE 200 | PHOENIX, AZ

PHOTOS

FOR MORE INFORMATION PLEASE CONTACT:

**CHASE HEINEMANN**  
Senior Vice President  
P: 602.575.2333 | M: 602.689.4071  
E: [CHeinemann@daumcre.com](mailto:CHeinemann@daumcre.com)

**BOB LUNDSTEDT**  
Executive Vice President  
P: 602.575.2311 | M: 602.363.7238  
E: [RLundstedt@daumcre.com](mailto:RLundstedt@daumcre.com)

**SKIP CORLEY**  
Executive Vice President  
P: 602.575.2303 | M: 602.469.5340  
E: [SCorley@daumcre.com](mailto:SCorley@daumcre.com)

 **DAUM**  
COMMERCIAL REAL ESTATE SERVICES

Although all information is furnished regarding for sale, rental or financing is from sources deemed reliable, such information has not been verified and no express representation is made nor is any to be implied as to the accuracy thereof, and it is submitted subject to errors, omissions, changes of price, rental or other conditions, prior sale, lease or financing, or withdrawal without notice. All Maps provided courtesy of Google Maps, Bing Maps, and Google Earth. D/AQ Corp. # 01129558



# FOR LEASE | ±2,600 SF OFFICE SPACE

## 1523 W. WHISPERING WIND DR. | SUITE 200 | PHOENIX, AZ

AERIAL

FOR MORE INFORMATION PLEASE CONTACT:

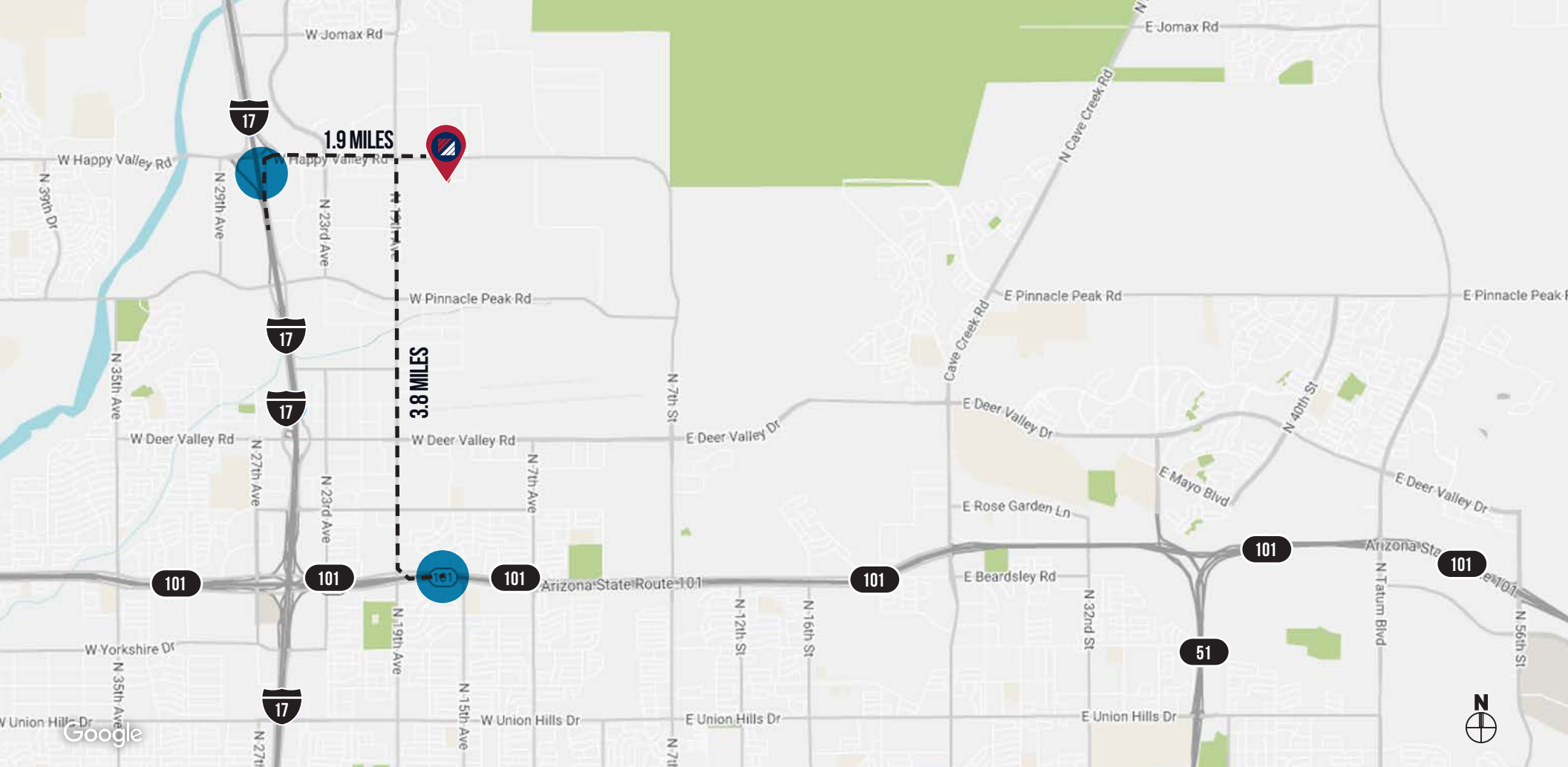
**CHASE HEINEMANN**  
Senior Vice President  
P: 602.575.2333 | M: 602.689.4071  
E: CHeinemann@daumcre.com

**BOB LUNDSTEDT**  
Executive Vice President  
P: 602.575.2311 | M: 602.363.7238  
E: RLundstedt@daumcre.com

**SKIP CORLEY**  
Executive Vice President  
P: 602.575.2303 | M: 602.469.5340  
E: SCorley@daumcre.com

**DAUM**  
COMMERCIAL REAL ESTATE SERVICES

Although all information is furnished regarding for sale, rental or financing is from sources deemed reliable, such information has not been verified and no express representation is made nor is any to be implied as to the accuracy thereof, and it is submitted subject to errors, omissions, changes of price, rental or other conditions, prior sale, lease or financing, or withdrawal without notice. All Maps provided courtesy of Google Maps, Bing Maps, and Google Earth. D/AQ Corp. # 01129558



# FOR LEASE | ±2,600 SF OFFICE SPACE

## 1523 W. WHISPERING WIND DR. | SUITE 200 | PHOENIX, AZ

### LOCATION MAP

FOR MORE INFORMATION PLEASE CONTACT:

**CHASE HEINEMANN**  
Senior Vice President  
P: 602.575.2333 | M: 602.689.4071  
E: [CHeinemann@daumcre.com](mailto:CHeinemann@daumcre.com)

**BOB LUNDSTEDT**  
Executive Vice President  
P: 602.575.2311 | M: 602.363.7238  
E: [RLundstedt@daumcre.com](mailto:RLundstedt@daumcre.com)

**SKIP CORLEY**  
Executive Vice President  
P: 602.575.2303 | M: 602.469.5340  
E: [SCorley@daumcre.com](mailto:SCorley@daumcre.com)

 **DAUM**  
COMMERCIAL REAL ESTATE SERVICES