

# Retail Space for Lease

# 494 Manhattan Ave

Williamsburg, Brooklyn, NY

## Location:

Entrances on Manhattan Avenue & Eckford Street

## Retail Space:

Ground Floor: 3,820 SF

## Frontage:

50 FT on Manhattan Avenue +  
40 FT on Eckford Street

## Ceiling Heights:

10 FT

## Price:

Upon request

## Highlights:

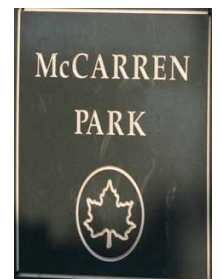
- Newly developed Retail Space available in a mixed-use building with luxury residences above
- Great Foot Traffic
- Directly across from McCarren Park
- Located 4 minutes walking distance from Manhattan Ave G-train subway stop
- Landlord can deliver a custom build-out for Tenant



## Local Attractions:



**VITAL**  
CLIMBING GYM



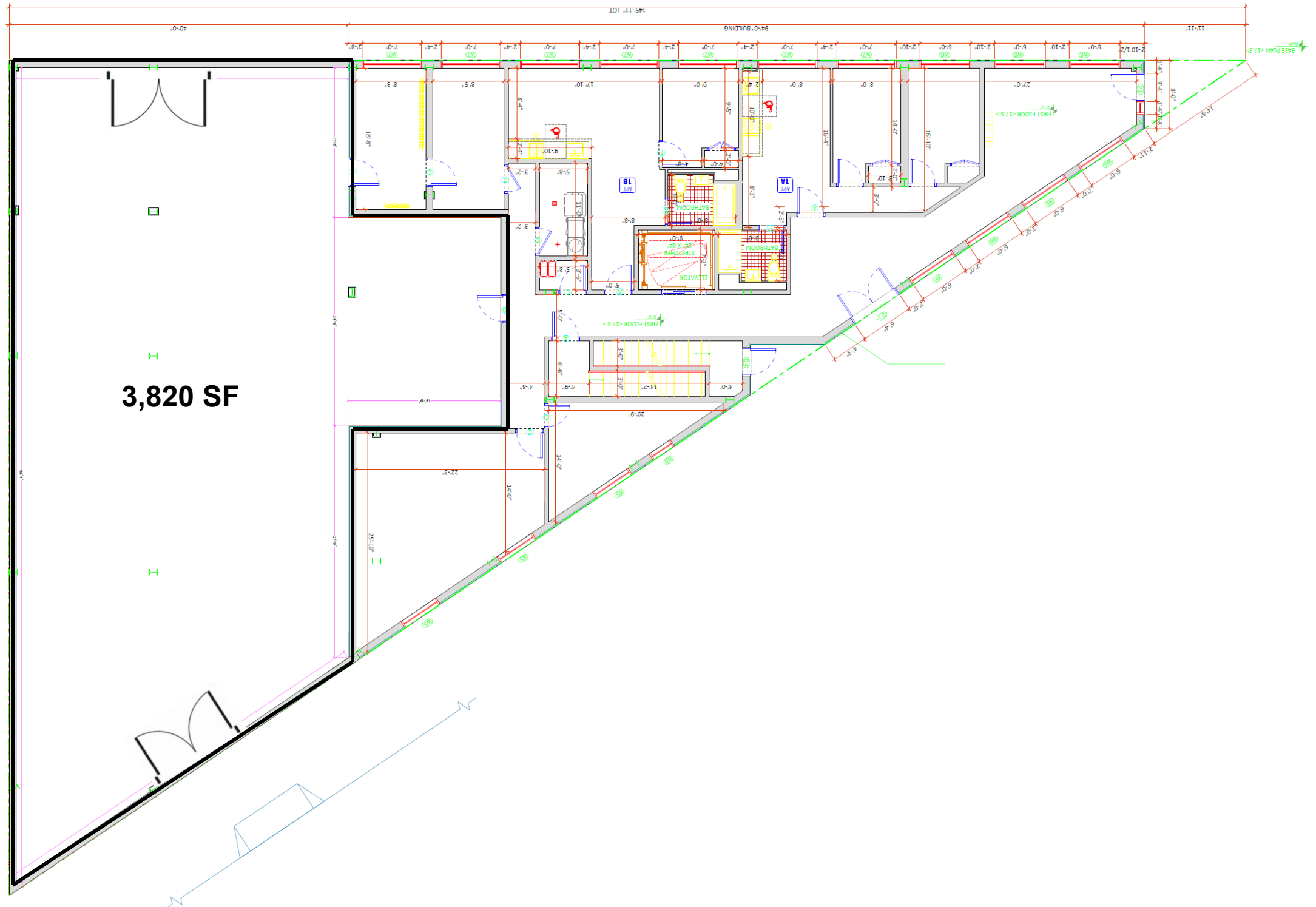
**SLOAN  
REAL  
ESTATE**

**Call/Text:  
516 350 2621**

# 494 Manhattan Ave

## Ground Floor Retail Floorplan

Williamsburg, Brooklyn, NY





# 494 Manhattan Ave

## Interior Photos

Williamsburg, Brooklyn, NY

Facing Manhattan Avenue



Facing Eckford Street





# CONTACT

---

**JOSH SLOAN**

516-350-2621

[JS@SLOAN-RE.COM](mailto:JS@SLOAN-RE.COM)