

# KINGS CENTRE

300 East Main Street  
Johnson City, TN 37601

## Location

At the intersection of E Main St and S Roan St in Downtown Johnson City

## Available for Lease

### 1st floor

Suite 104: 1,720 RSF - \$2,435/mo. gross

Suite 106: 1,780 RSF - \$2,520/mo. gross

Suite 108: 1,775 RSF - \$2,515/mo. gross

### Mezzanine

Suite 151: 1,290 RSF - \$1,550/mo. gross

Suite 153: 1,623 RSF - \$1,960/mo. gross

Suite 154 & 155: 950 RSF - \$1,310/mo. gross

## Highlights

Rent includes all utilities except internet and phone

New renovation

Common lobby

Located at a lighted intersection

## Demographics

(2025 Est.)	3 mile	5 mile	10 mile
Population	53,231	82,383	162,505
Median HH Income	\$49,642	\$53,600	\$60,596
Median Age	35.1	37.8	41.6

## Contact

**Shannon K. Castillo**

Broker

shannon@mitchcox.com

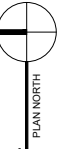
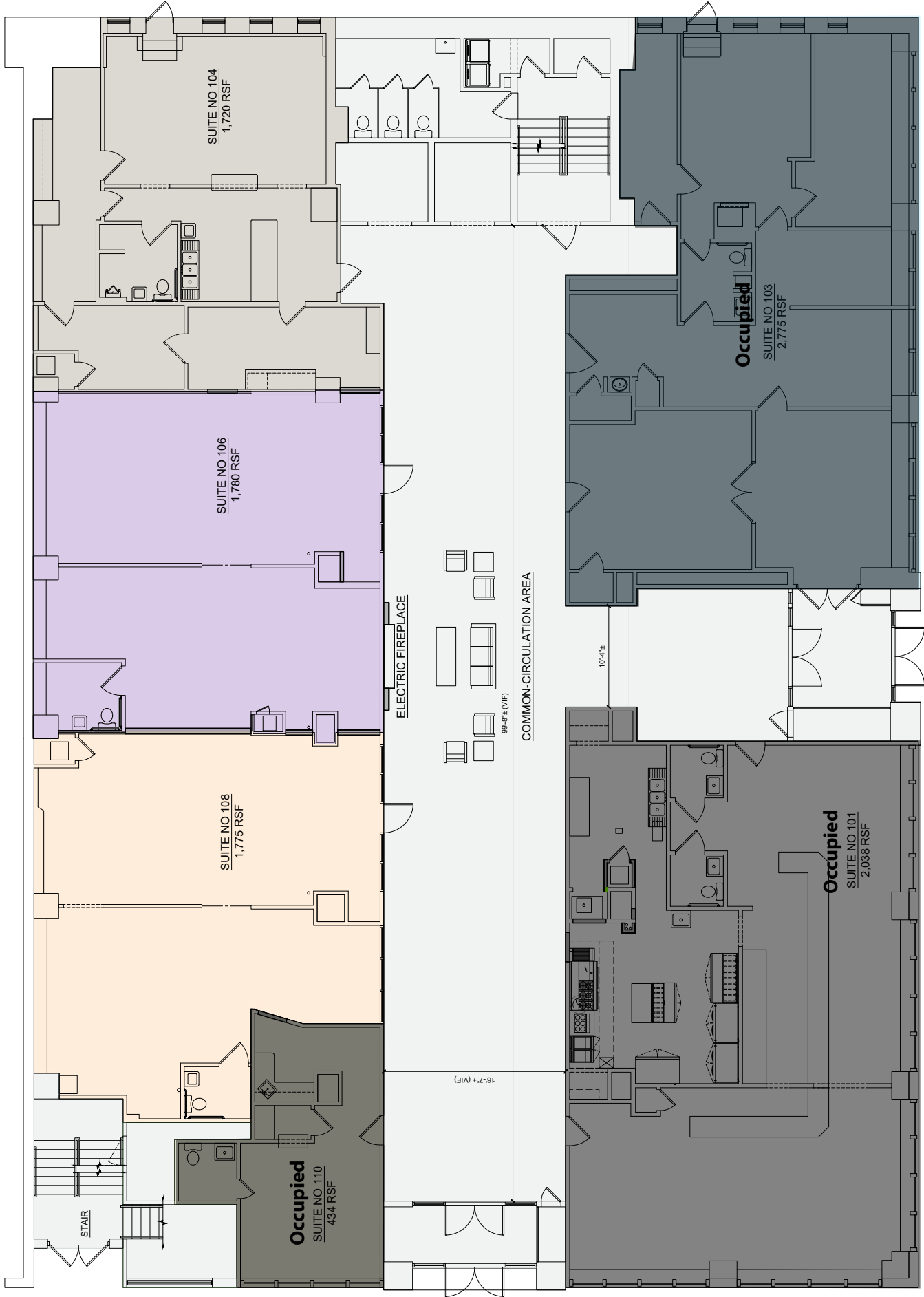
📞 423-282-6582 | 📠 423-282-5903

www.mitchcox.com



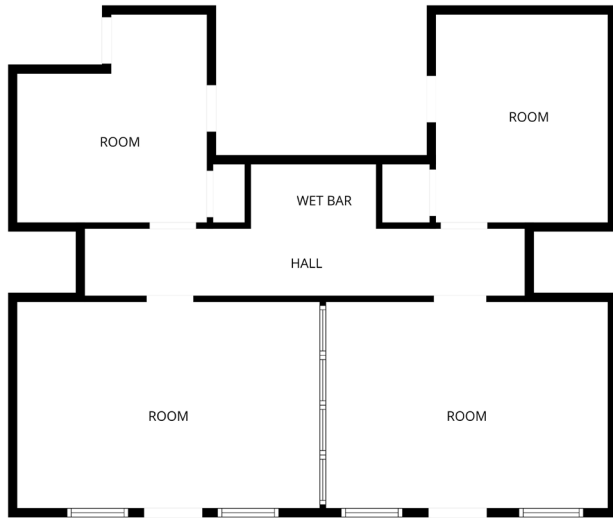
**MITCH COX**  
REALTOR, INC.





**EXISTING FIRST LEVEL**  
 SCALE: 3/16"=1'-0" FIN.F.L.R. ELEV. = 100.00' (0-07")  
 FLR AREA = 11,282 SF

**Suite 154**



**Suite 151**



**Suite 153**

