

# ±532 Acres SWC & SEC of I-8 & Vekol Valley Road Interchange AVAILABLE FOR SALE OR LEASE: Call Agent for Price



John S. Filli, SIOR | [john.filli@naihorizon.com](mailto:john.filli@naihorizon.com) | +1 602 852 3411

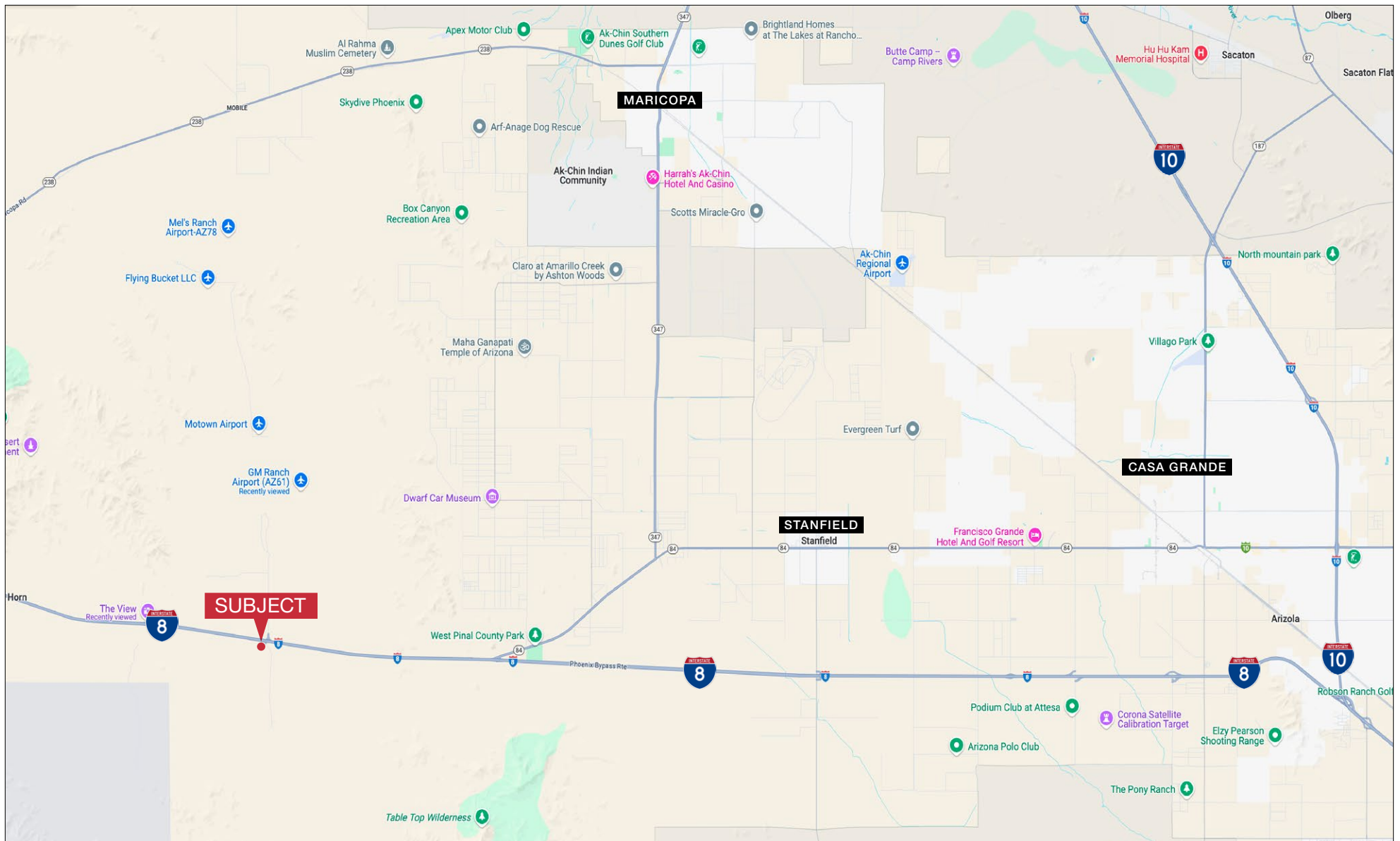
2944 N 44th St, Suite 200, Phoenix, AZ 85018 | +1 602 955 4000 | [naihorizon.com](http://naihorizon.com)

All information furnished regarding property for sale, rental or financing is from sources deemed reliable, but no warranty or representation is made to the accuracy thereof and same is submitted subject to errors, omissions, change of price, rental or other conditions prior to sale, lease or financing or withdrawal without notice. No liability of any kind is to be imposed on the broker herein.





# Location Map



John S. Filli, SIOR | [john.filli@naihorizon.com](mailto:john.filli@naihorizon.com) | +1 602 852 3411

2944 N 44th St, Suite 200, Phoenix, AZ 85018 | +1 602 955 4000 | [naihorizon.com](http://naihorizon.com)

All information furnished regarding property for sale, rental or financing is from sources deemed reliable, but no warranty or representation is made to the accuracy thereof and same is submitted subject to errors, omissions, change of price, rental or other conditions prior to sale, lease or financing or withdrawal without notice. No liability of any kind is to be imposed on the broker herein.

**NAI**Horizon

# ±532 Acres SWC & SEC of I-8 & Vekol Valley Road Interchange

A ±532 Acre Vacant, Unimproved,  
RU-190-Zoned Land Site Available for Sale.

Excellent Site Location for  
Solar / Commercial / Industrial

Property Features:

- Asking Sale Price: Call Agent for Price
- Possible location for a Solar EV Charging Station

Site/Location Features:

- Site is readily accessible from I-8
- Site has excellent visibility from I-8
- Site is in great proximity to Market, Transportation & Labor

<b>Property Name</b>	±532 Acre Vacant UI, RU-190-Zoned, Land Site, Maricopa County, AZ
<b>Property Address</b>	Situated along the south side of Interstate 8, at the Vekol Valley Road Interchange
<b>County</b>	Maricopa
<b>ZIP</b>	85337
<b>Major Cross Streets</b>	I-8 and Vekol Valley Road
<b>Land Size (AC)</b>	±532.45
<b>Land Size (SF)</b>	±23,193,899
<b>Sale Price</b>	Call Agent for Price
<b>Zoning</b>	RU-190
<b>Primary Use</b>	AG
<b>Topography</b>	Gentle Slope
<b>Electricity</b>	APS
<b>Water</b>	Well
<b>Sewer</b>	None
<b>Property Taxes</b>	\$3,203.78
<b>APN &amp; Parcel Size</b>	300-34-014E: ±268.01 AC (11,674,821 SF) 300-34-015: ±156.46 AC (6,815,398 SF) 300-34-005B: ±91.82 AC (3,999,994 SF) 300-34-003B: ±16.15 AC (703,686 SF)

John S. Filli, SIOR | john.filli@naihorizon.com | +1 602 852 3411

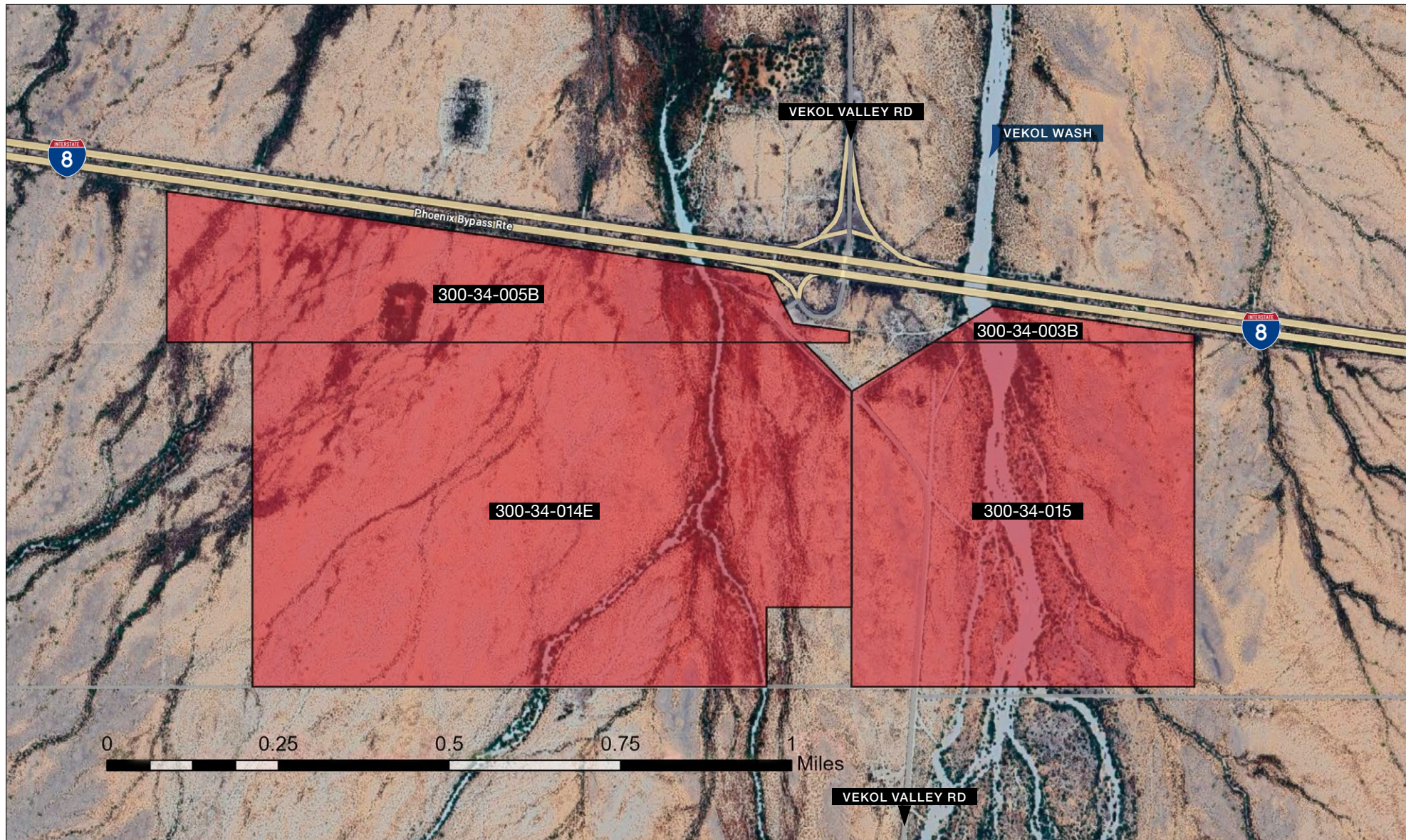
2944 N 44th St, Suite 200, Phoenix, AZ 85018 | +1 602 955 4000 | [naihorizon.com](http://naihorizon.com)

All information furnished regarding property for sale, rental or financing is from sources deemed reliable, but no warranty or representation is made to the accuracy thereof and same is submitted subject to errors, omissions, change of price, rental or other conditions prior to sale, lease or financing or withdrawal without notice. No liability of any kind is to be imposed on the broker herein.





# Parcel Map



**John S. Filli, SIOR** | [john.filli@naihorizon.com](mailto:john.filli@naihorizon.com) | +1 602 852 3411

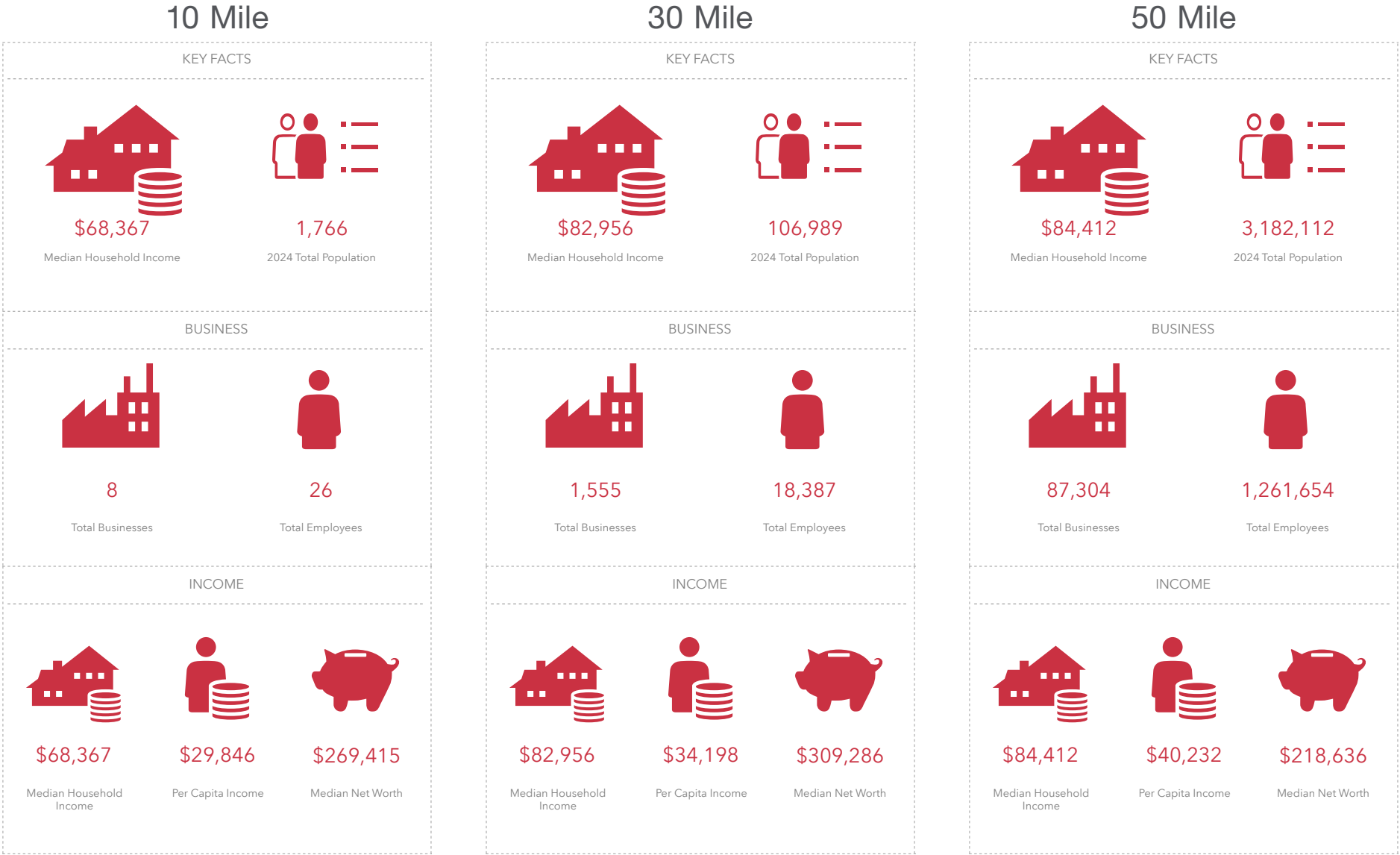
2944 N 44th St, Suite 200, Phoenix, AZ 85018 | +1 602 955 4000 | [naihorizon.com](http://naihorizon.com)

All information furnished regarding property for sale, rental or financing is from sources deemed reliable, but no warranty or representation is made to the accuracy thereof and same is submitted subject to errors, omissions, change of price, rental or other conditions prior to sale, lease or financing or withdrawal without notice. No liability of any kind is to be imposed on the broker herein.

**NAI**Horizon



# Demographics 10 Mile, 30 Mile, 50 Mile

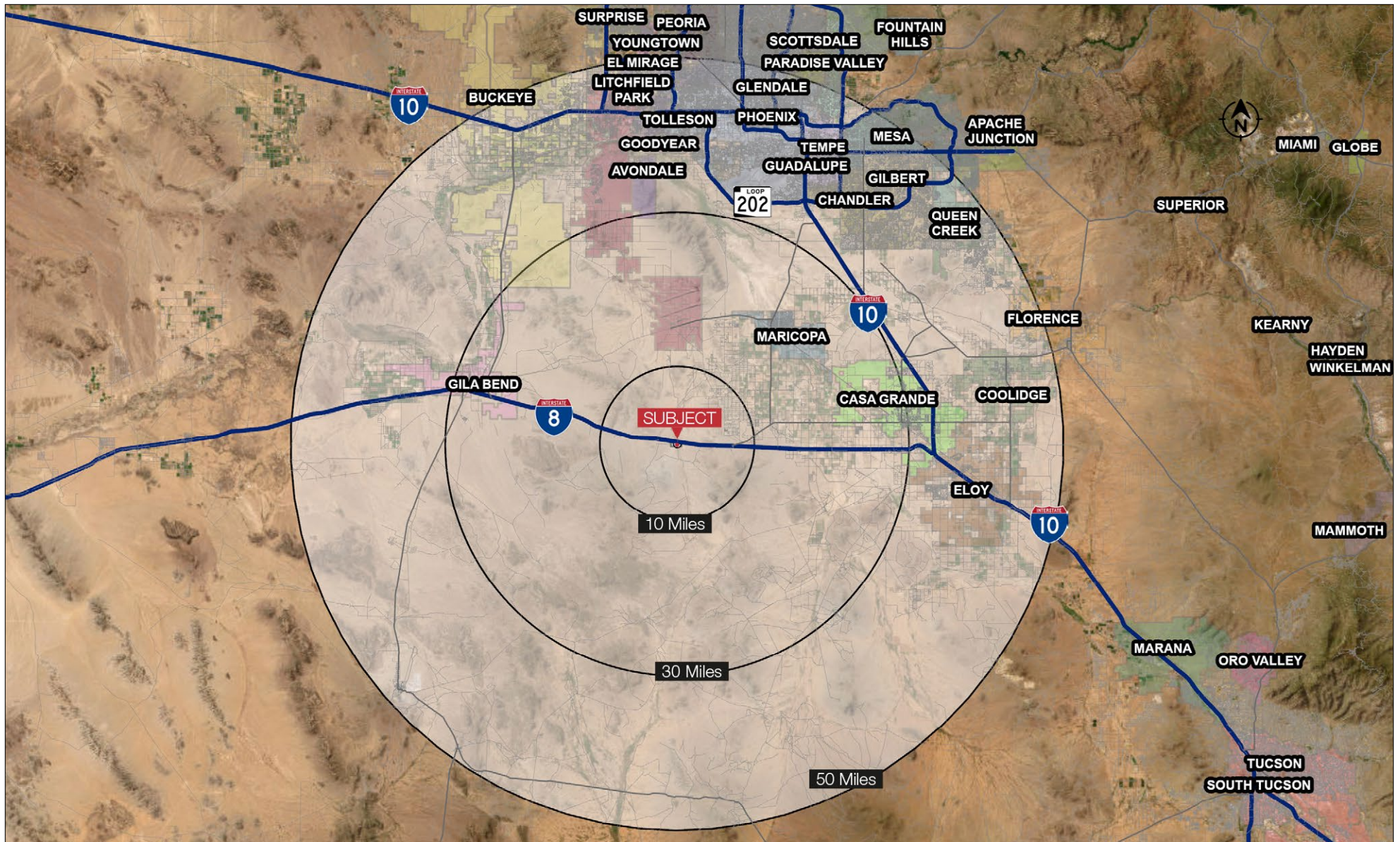


John S. Filli, SIOR | john.filli@naihorizon.com | +1 602 852 3411

2944 N 44th St, Suite 200, Phoenix, AZ 85018 | +1 602 955 4000 | [naihorizon.com](http://naihorizon.com)

All information furnished regarding property for sale, rental or financing is from sources deemed reliable, but no warranty or representation is made to the accuracy thereof and same is submitted subject to errors, omissions, change of price, rental or other conditions prior to sale, lease or financing or withdrawal without notice. No liability of any kind is to be imposed on the broker herein.

# Distance Map 10 Mile, 30 Mile, 50 Mile



John S. Filli, SIOR | [john.filli@naihorizon.com](mailto:john.filli@naihorizon.com) | +1 602 852 3411

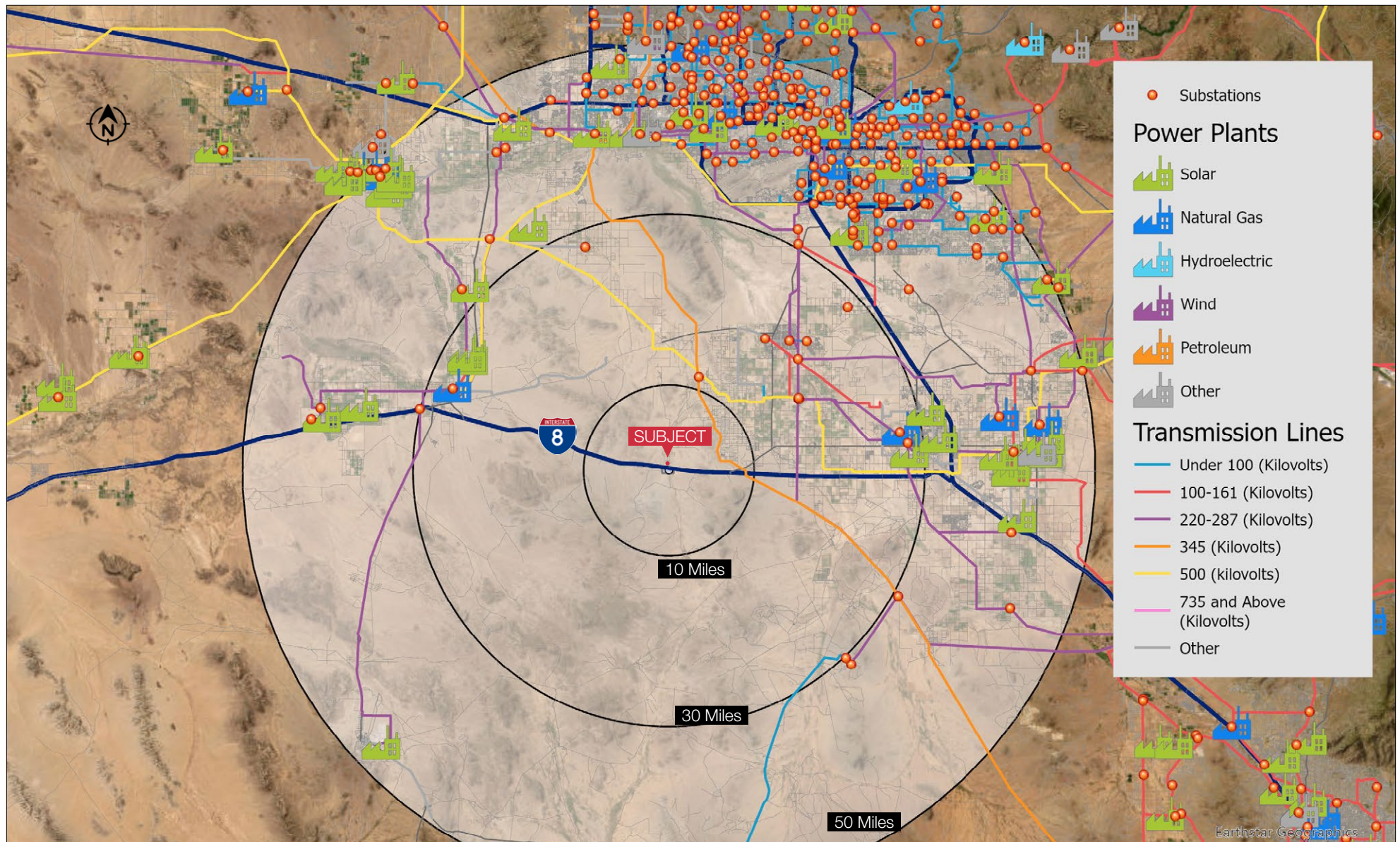
2944 N 44th St, Suite 200, Phoenix, AZ 85018 | +1 602 955 4000 | [naihorizon.com](http://naihorizon.com)

All information furnished regarding property for sale, rental or financing is from sources deemed reliable, but no warranty or representation is made to the accuracy thereof and same is submitted subject to errors, omissions, change of price, rental or other conditions prior to sale, lease or financing or withdrawal without notice. No liability of any kind is to be imposed on the broker herein.

**NAI**Horizon



# Power & Transmission Lines Map



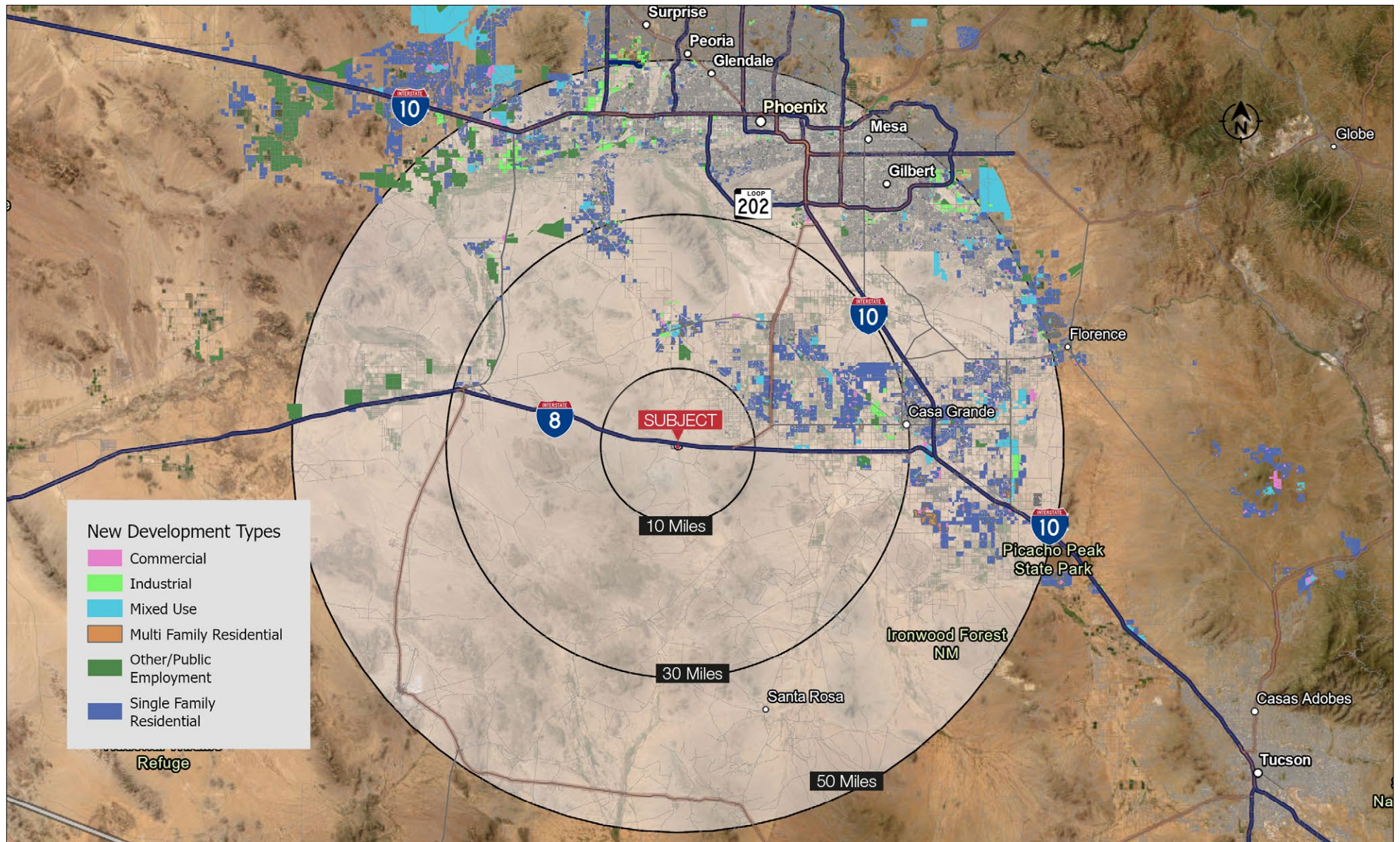
John S. Filli, SIOR | [john.filli@naihorizon.com](mailto:john.filli@naihorizon.com) | +1 602 852 3411

2944 N 44th St, Suite 200, Phoenix, AZ 85018 | +1 602 955 4000 | [naihorizon.com](http://naihorizon.com)

All information furnished regarding property for sale, rental or financing is from sources deemed reliable, but no warranty or representation is made to the accuracy thereof and same is submitted subject to errors, omissions, change of price, rental or other conditions prior to sale, lease or financing or withdrawal without notice. No liability of any kind is to be imposed on the broker herein.



# New Development Projects



25-04-009

John S. Filli, SIOR | [john.filli@naihorizon.com](mailto:john.filli@naihorizon.com) | +1 602 852 3411

2944 N 44th St, Suite 200, Phoenix, AZ 85018 | +1 602 955 4000 | [naihorizon.com](http://naihorizon.com)

All information furnished regarding property for sale, rental or financing is from sources deemed reliable, but no warranty or representation is made to the accuracy thereof and same is submitted subject to errors, omissions, change of price, rental or other conditions prior to sale, lease or financing or withdrawal without notice. No liability of any kind is to be imposed on the broker herein.

**NAI**Horizon