

PROPERTY FOR LEASE

NEW RENT RATE!

| 160 IRVING PROFESSIONAL BUILDING | |
|-------------------------------------|---|
| SUITE 101 MGM Law Firm | SUITE 201 Pat Cougill Attorney at Law |
| SUITE 102 Spar Beauty | SUITE 202 Law Offices of Jimmy Ray Peterson, LLC |
| SUITE 103 WJW Studio | SUITE 203 Kuhlman Law, LLC |
| SUITE 104 | |

Asking Rent:
\$1,700 per per month

Executive office space in downtown Bend near the courthouse, restaurants and more.



About the Property

The Irving Professional Building was remodeled into executive office suites years ago from an eight-unit apartment building in downtown Bend. The landlord has created a quaint European character both inside and outside that is perfect for a small business looking for unique space.

Available Space
Two Executive office
suites

Address
160 NW Irving Avenue
Bend, Oregon

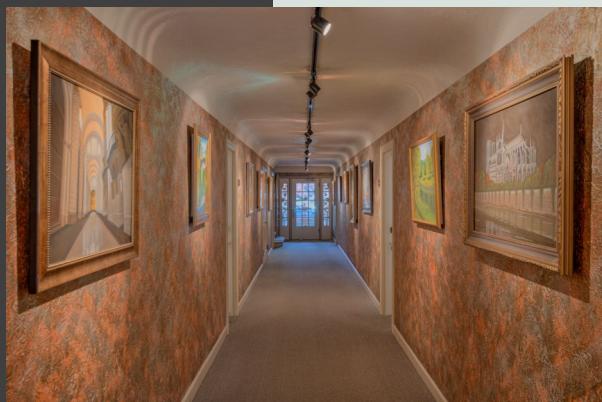
Flat Rate
Rent includes utilities, but not
wifi or telephone

PROPERTY FOR LEASE



Building Highlights

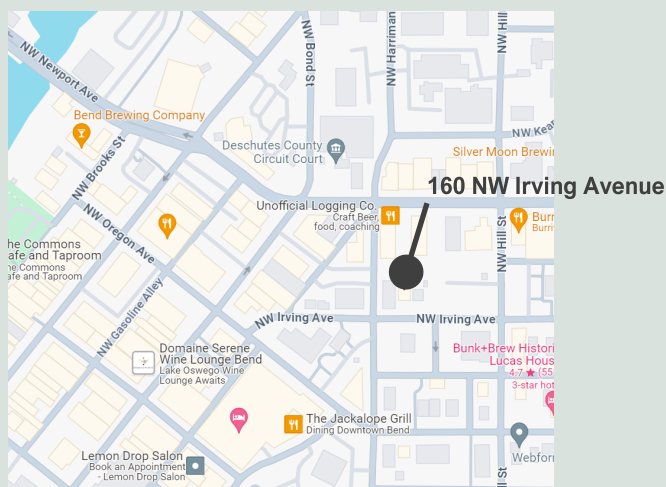
- > Suite 102 and 204 available
- > Each suite has a reception area and two offices.
- > Bathroom in one office; shared bathrooms in hall.
- > One reserved parking spot per suite.



About the Area

Downtown Bend is one of the fastest growing cities in Central Oregon. This property is located on a quiet street in downtown Bend close to the courthouse and down the street from the Fedex office and Post Office. Walk to restaurants, bars, shopping or a variety of services.

Other parking options include on-street parking or a parking structure a couple of blocks away.



Karen Koppel, CCIM
Broker
541-678-2924
karenk@alignedcre.com
Oregon Licensed RE Broker



Aligned Commercial
888-828-7838
www.alignedcre.com
708 SW Deschutes Ave.
Redmond, OR 97756