



MURRY OFFICE FOR LEASE WITH FREEWAY VISIBILITY

5636-5650 S. GREEN STREET, MURRAY, UTAH 84123



PROPERTY INFORMATION

- Suite 5642: 3,372 SF Office
- Collaborative Open Workspace with Built-In Cubicle Stations
- Ideal for Call Center or Operations Teams
- Ample Parking Available
- Many Nearby Retail Amenities
- Excellent Central Location in Murray
- I-15 Freeway Visibility and Access

LEASE RATE : \$17.00/SF Full Service

DEMOGRAPHICS

	1 Mile	3 Mile	5 Mile
Population	12,205	156,963	411,733
Households	4,433	60,909	151,017
Avg. Household Income	\$126,373	\$101,064	\$108,141

TRAFFIC COUNTS

5300 South: 33,000 Annual Average Daily Traffic

300 West: 12,000 Annual Average Daily Traffic

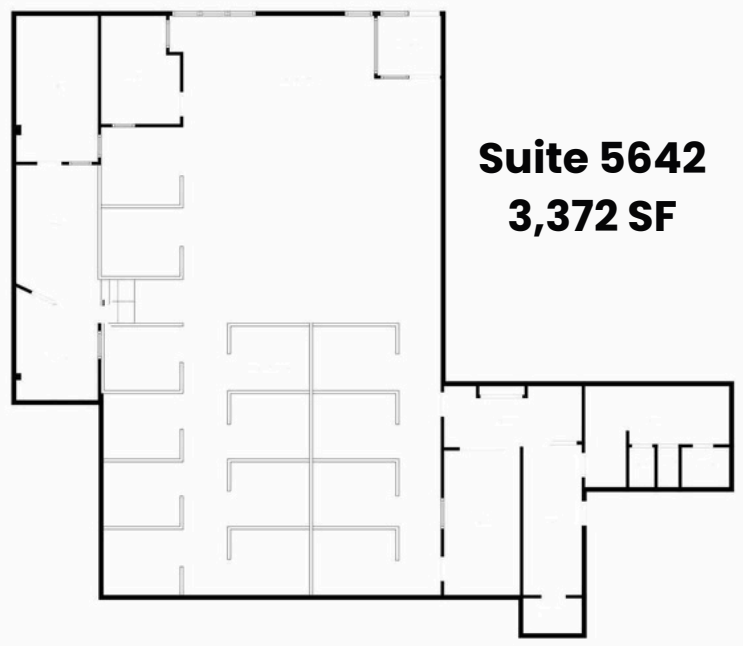
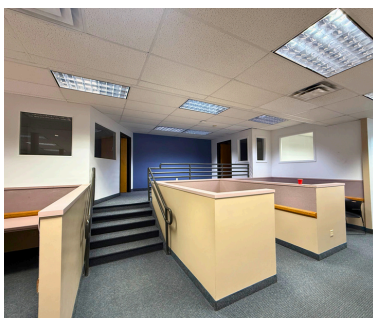
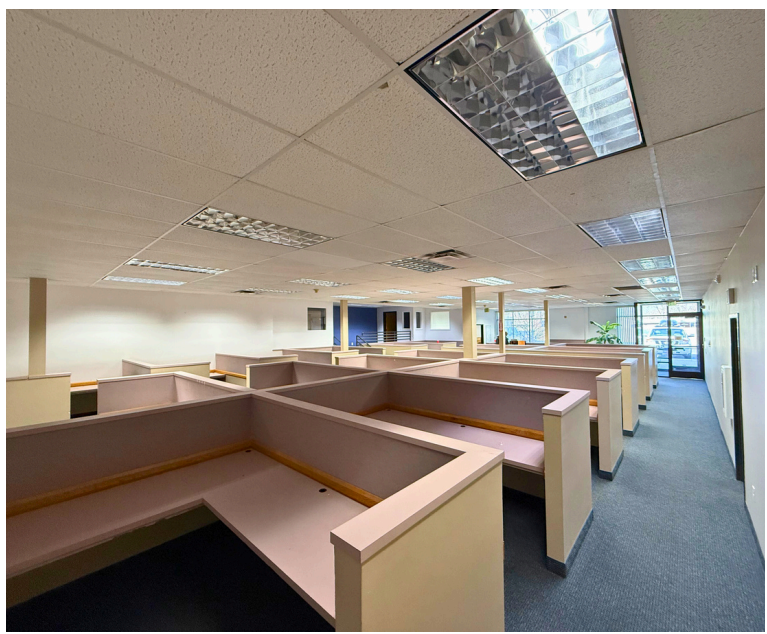
CONTACT
801.617.1700

GAVIN PERRYMAN | GAVIN.PERRYMAN@CRCNATIONWIDE.COM
CRYSTAL JOHNSON | CRYSTAL.JOHNSON@CRCNATIONWIDE.COM



MURRY OFFICE FOR LEASE WITH FREEWAY VISIBILITY

5636-5650 S. GREEN STREET, MURRAY, UTAH 84123



Suite 5642
3,372 SF

This information is given with the understanding that all negotiations and/or real estate activity related to the property described above shall be conducted through this cRc Nationwide office. The above information while not guaranteed, was obtained from sources we believe to be reliable.

CONTACT
801.617.1700

GAVIN PERRYMAN | GAVIN.PERRYMAN@CRCNATIONWIDE.COM
CRYSTAL JOHNSON | CRYSTAL.JOHNSON@CRCNATIONWIDE.COM