



FOR LEASE

7,530 SF Walgreens Space

1201 Taraval St | San Francisco, CA 94116



Walgreens Space

1201 Taraval St | San Francisco, CA 94116



7,530 SF

Building

12/1/2027

Lease End Date

\$20 PSF MG

Asking

ABOUT THE PROPERTY

All offers are subject to approval by Walgreens Real Estate Committee.

- Corner location on Taraval St, one of the main streets in the Sunset Neighborhood.
- Taraval St is home to numerous local restaurants and cafes.
- Located 3 short blocks away from the heavy car traffic of 19th Ave, the main North South approach to the Golden Gate Bridge.

NEARBY RETAILERS

SAFeway  BANK OF AMERICA  CHASE 



TRAFFIC COUNTS

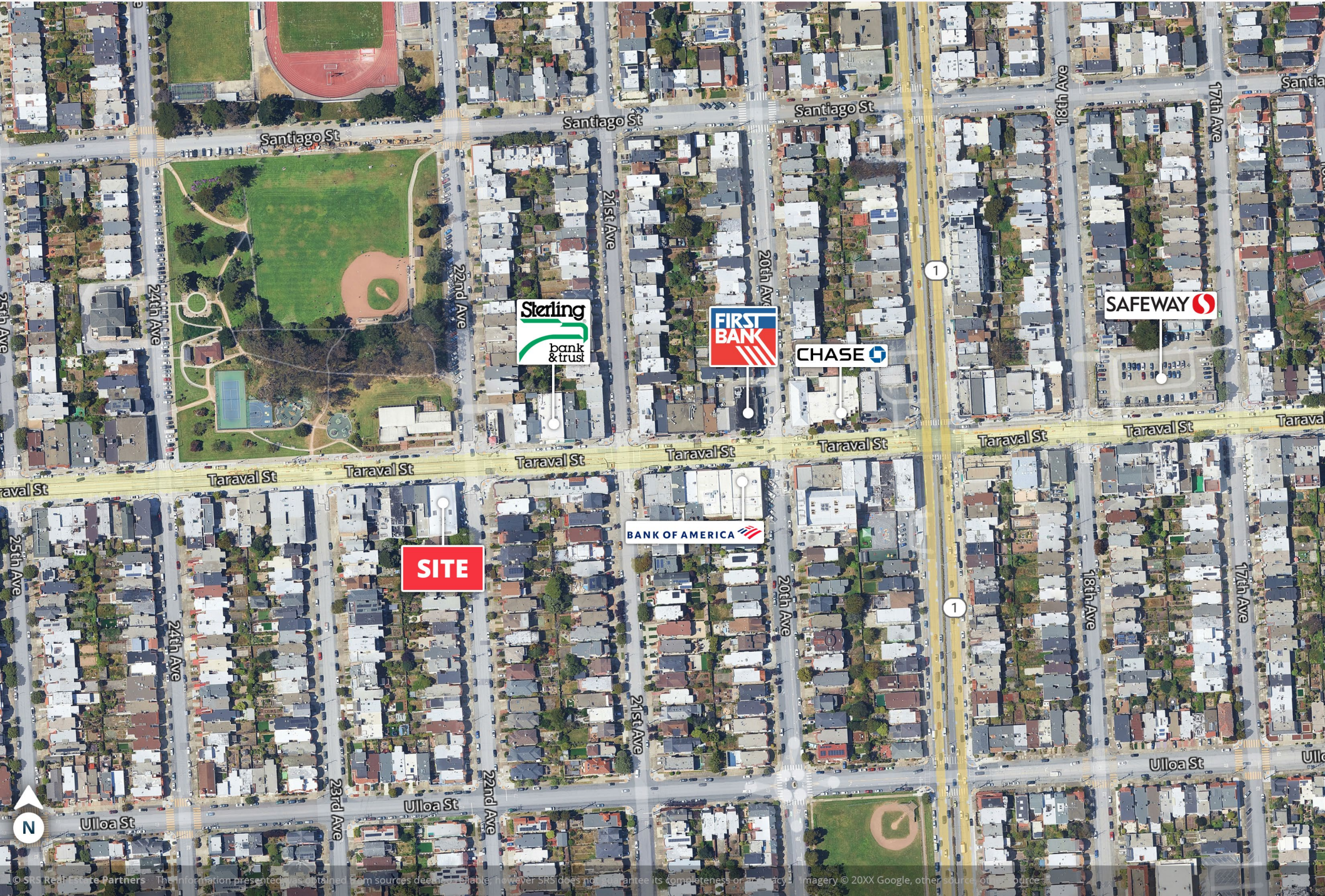
Taraval St
19th Ave

Year: 2023 | Placer Labs, Inc.

2,538 VPD
64,568 VPD

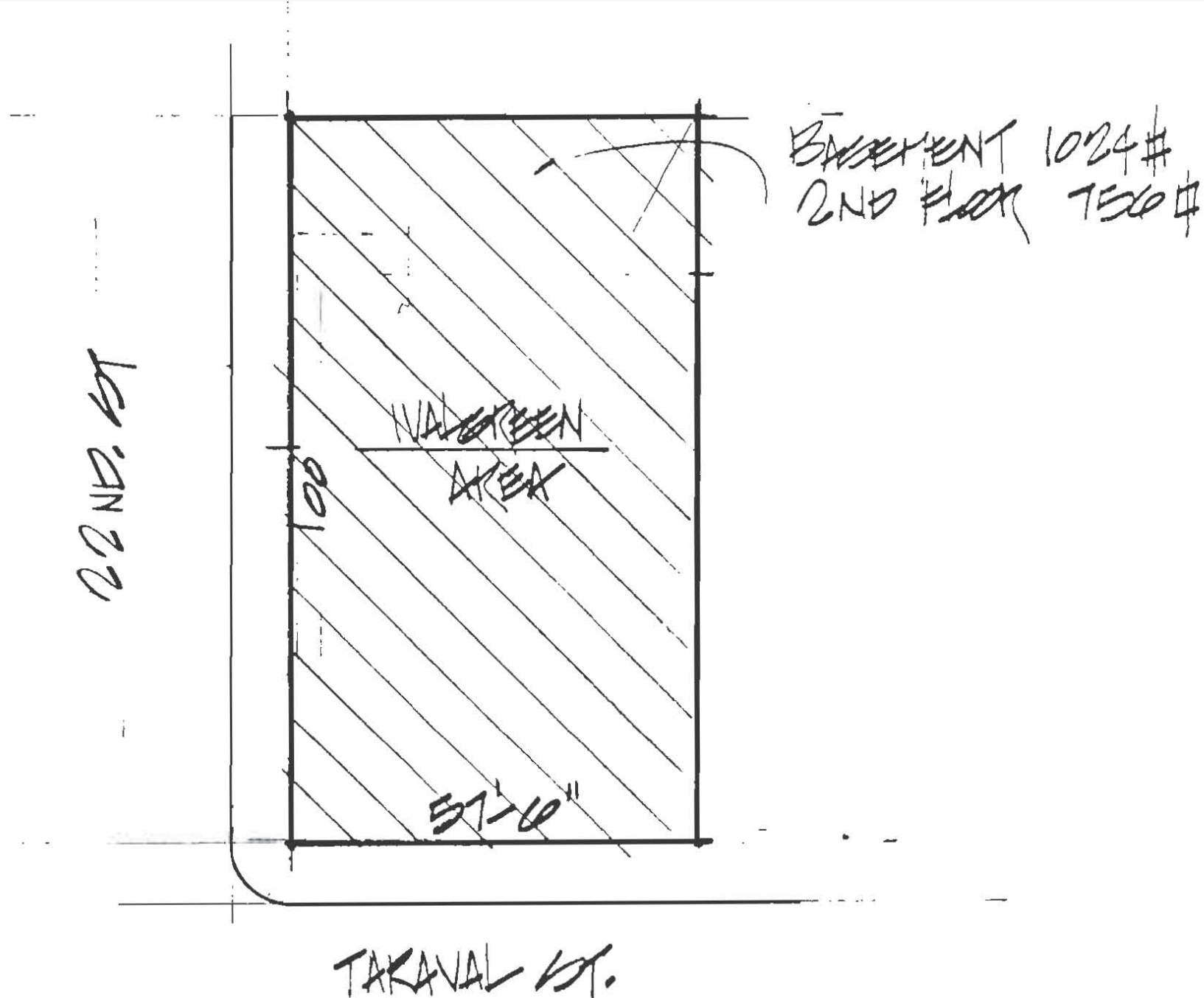
Walgreens Space

1201 Taraval St | San Francisco, CA 94116



Walgreens Space

1201 Taraval St | San Francisco, CA 94116



DEMOGRAPHIC HIGHLIGHTS

Population

	1 Mile	3 Miles	5 Miles
2024 Estimated Population	42,512	359,736	822,577
2029 Projected Population	42,759	362,392	833,788
Projected Annual Growth 2024 to 2029	0.12%	0.15%	0.27%

2024 Daytime Population

Daytime Population	34,404	294,567	766,673
Workers	16,478	157,747	464,853
Residents	17,926	136,820	301,820

2024 Income

Average Household Income	\$209,236	\$205,990	\$195,119
Median Household Income	\$156,044	\$152,975	\$137,992

Households & Growth

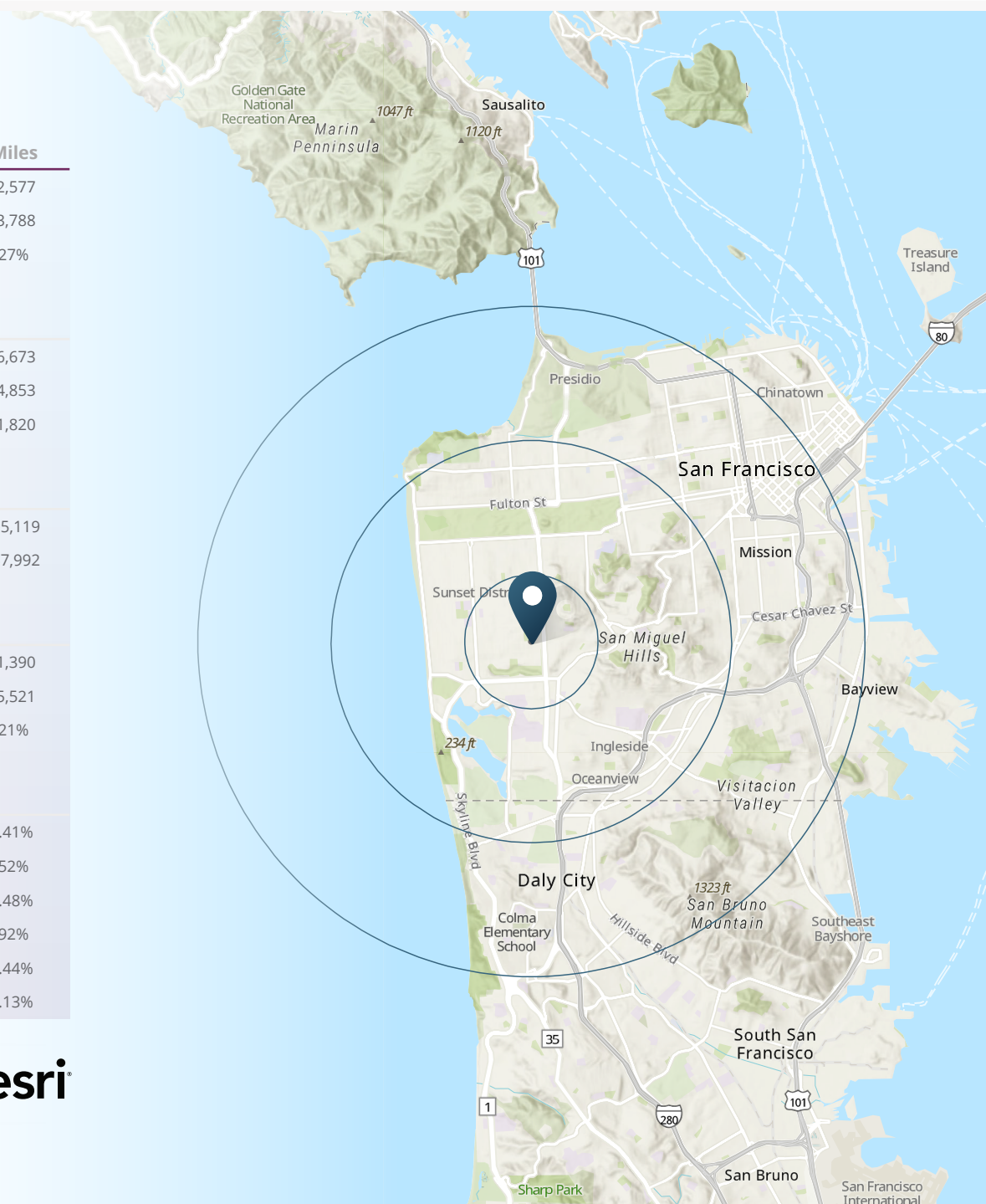
2024 Estimated Households	15,372	141,235	341,390
2029 Projected Households	15,392	141,830	345,521
Projected Annual Growth 2024 to 2029	0.03%	0.11%	0.21%

2024 Race & Ethnicity

White	33.62%	37.73%	36.41%
Black or African American	1.13%	2.79%	4.52%
Asian or Pacific Islander	53.56%	41.27%	37.48%
Other Race	2.83%	7.01%	9.92%
Two or More Races	8.45%	10.43%	10.44%
Hispanic	7.45%	14.24%	18.13%

> **Want more?** Contact us for a complete demographic, foot-traffic, and mobile data insights report.

SOURCE





SRS Real Estate Partners
150 California Street, 14th Fl
San Francisco, CA 94111
415.908.4930

Matthew D. Alexander
EVP & Principal
415.908.4938
matt.alexander@srsre.com
CA License No. 00883993

Sarah D. Edwards
First Vice President
408.216.2322
sarah.edwards@srsre.com
CA License No. 01297272

SRSRE.COM

© SRS Real Estate Partners

The information presented was obtained from sources deemed reliable;
however SRS Real Estate Partners does not guarantee its completeness or accuracy.