

For lease

Industrial outdoor storage

6113 Causeway Blvd

Tampa, FL 3361



Peter Cecora, SIOR
Senior Managing Director
peter.cecora@jll.com
+1 813 387 1297

Olivia Brock
Associate
olivia.brock@jll.com
+1 813 387 1320

6113 Causeway Blvd. Tampa, FL 33619

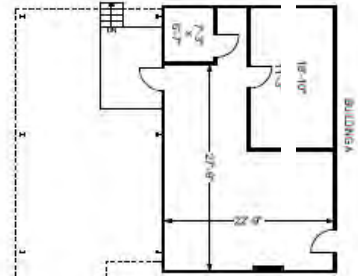
Property specifications

- Total SF: 12,659 SF
- Size: 4.16 acres (3.2 acres usable)
- Power: 200A 120/240V, 3-phase
- Zoning/Use code: 4830 Warehouse C
(zoning code info >)

Building A

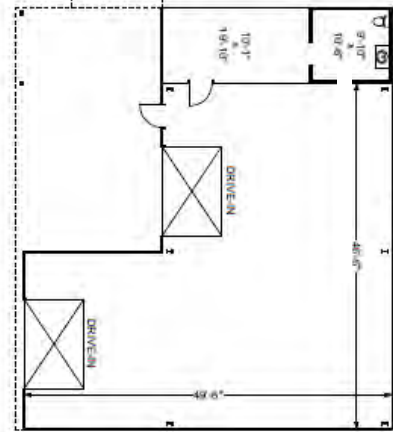
- Size: 846 SF
- 100% office
- One private office, restroom, and reception area

Building A: 846 SF



Building B

- Size: 2,212 SF
- Clear height: 11.5'
- Loading: Two (2) grade-level doors
 - One 12'x10' door & one 12'x9' door

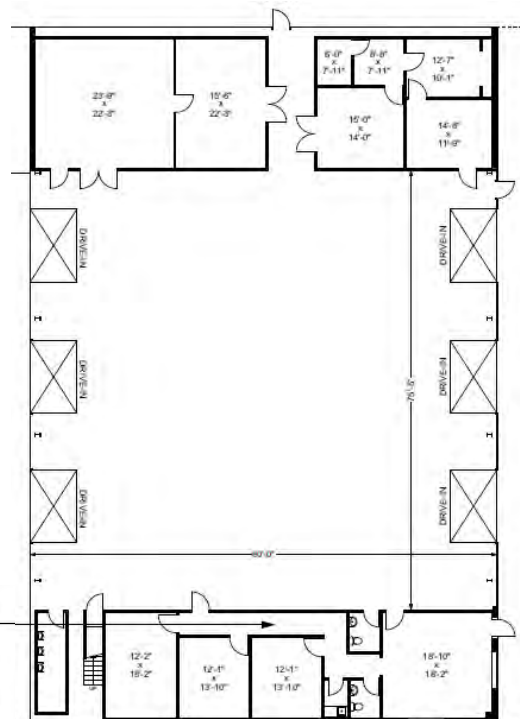


Building B: 2,212 SF

Building C

- Size: 9,600 SF
 - 3,071 SF office
 - 6,530 SF warehouse
 - 1,331 SF mezzanine
- Clear height: 17'-21'
- Loading: Six (6) 12.5'x14.5' grade-level doors

Building C: 9,601 SF



6113 Causeway Blvd. Tampa, FL 33619



Buildings A and B

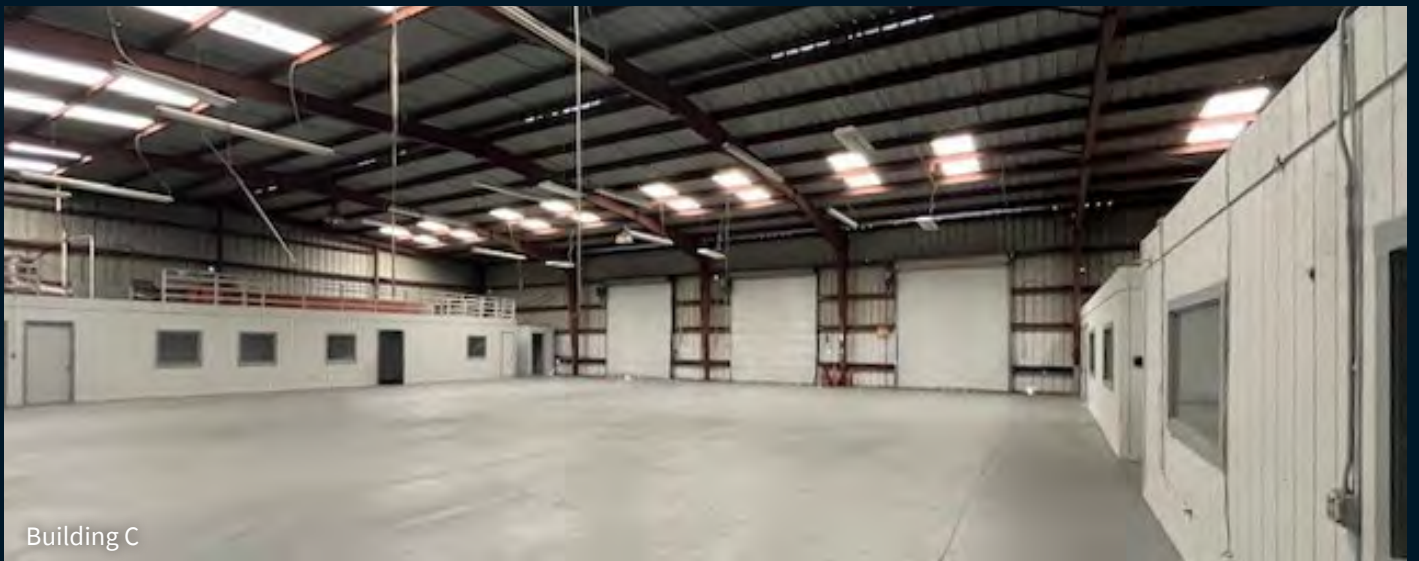
Building C



Buildings A and B

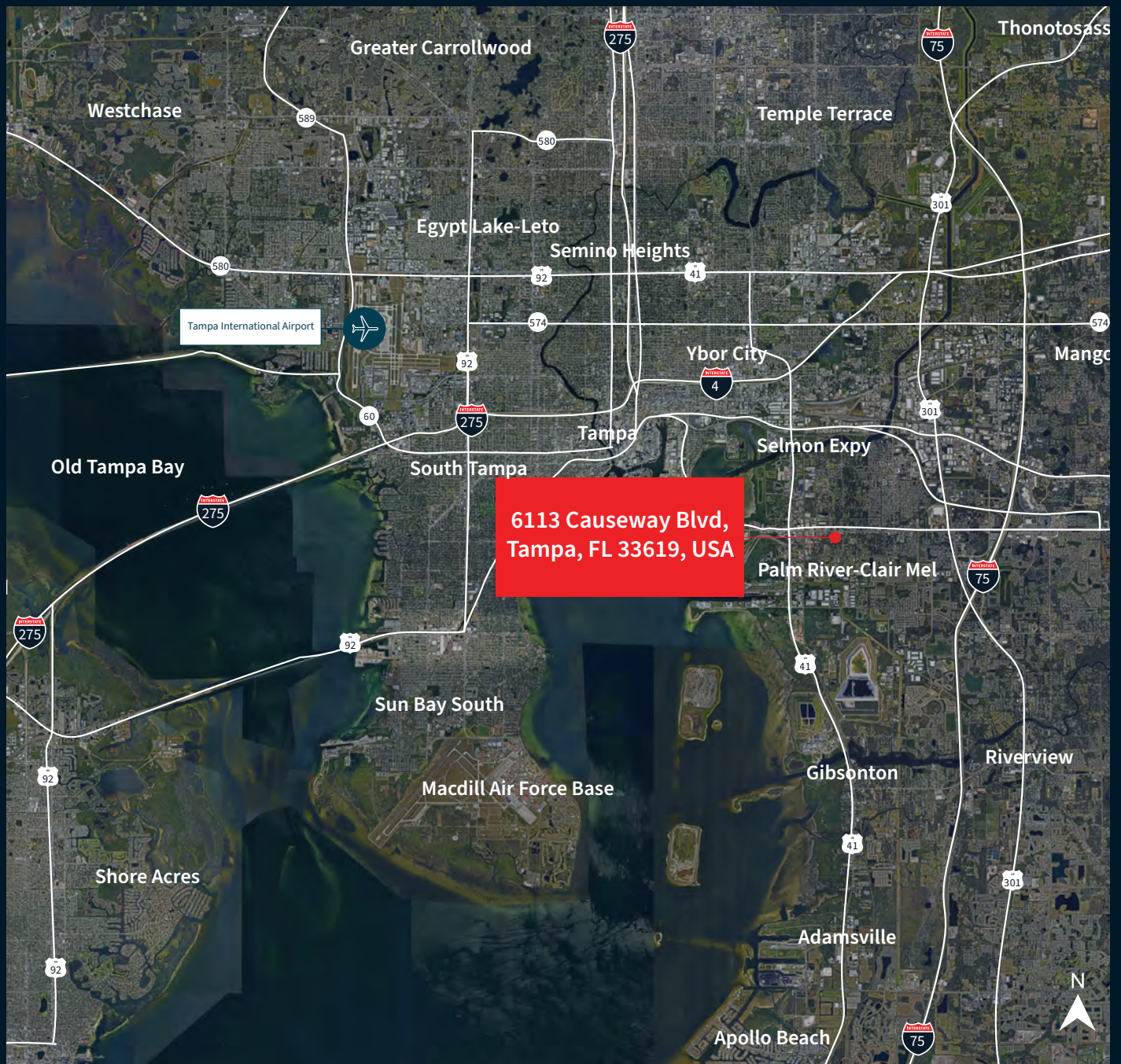


Building C



Building C

Location Map



Drive Times

US Hwy 301	1.9 miles	4 minutes
I-75	3 miles	7 minutes
I-4	4.3 miles	10 minutes
Tampa Port	5.5 miles	10 minutes
Downtown Tampa	6 miles	12 minutes
TPA	13 miles	20 minutes



JLL

Pete Cecora, SIOR
Senior Managing Director
+1 813 387 1297
peter.cecora@jll.com

Olivia Brock
Associate
+1 813 387 1320
olivia.brock@jll.com

Although information has been obtained from sources deemed reliable, JLL does not make any guarantees, warranties or representations, express or implied, as to the completeness or accuracy as to the information contained herein. Any projections, opinions, assumptions or estimates used are for example only. There may be differences between projected and actual results, and those differences may be material. JLL does not accept any liability for any loss or damage suffered by any party resulting from reliance on this information. If the recipient of this information has signed a confidentiality agreement with JLL regarding this matter, this information is subject to the terms of that agreement. ©2024 Jones Lang LaSalle Brokerage, Inc. All rights reserved.