

FOR LEASE HOME WITH ±1 ACRE OUTDOOR STORAGE

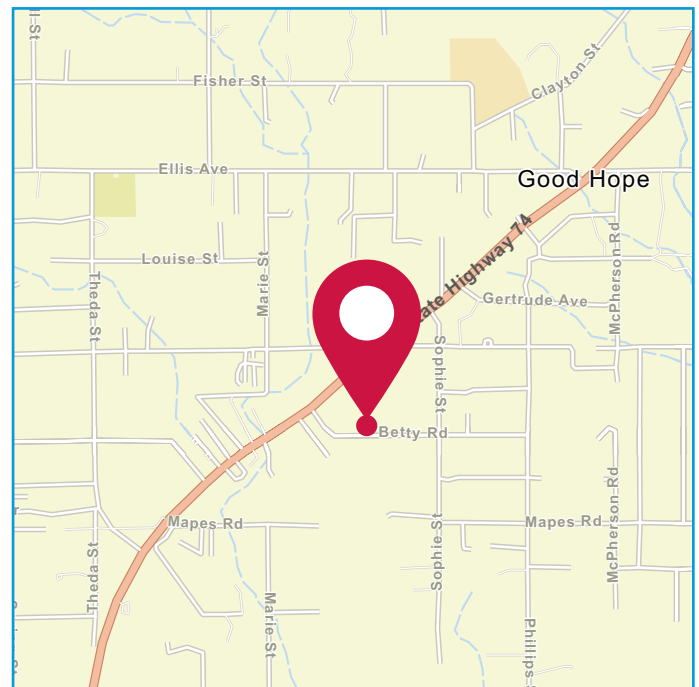
22802 BETTY ROAD | PERRIS



FEATURES:

- Unincorporated Perris, Zoning LI (Verify)
- ±1,500 SF Home
- Easy I-15 & I-215 Freeway Access
- Call Broker For Showing Instructions

MONTHLY RENT:
\$8,334.00



Sam Robles

951.445.4519
srobles@leetemecula.com
DRE #01982449

Charley Black

951.445.4507
cblack@leetemecula.com
DRE #01000597

No warranty or representation has been made to the accuracy of the foregoing information. Terms of sale or lease and availability are subject to change or withdrawal without notice. Lee & Associates Commercial Real Estate Services, Inc. - Riverside. 25240 Hancock Avenue, Suite 100 - Murrieta, CA 92562 Corporate ID# 01048055

FOR LEASE HOME WITH ±1 ACRE OUTDOOR STORAGE

22802 BETTY ROAD | PERRIS



Sam Robles
951.445.4519
srobles@leetemecula.com
DRE #01982449

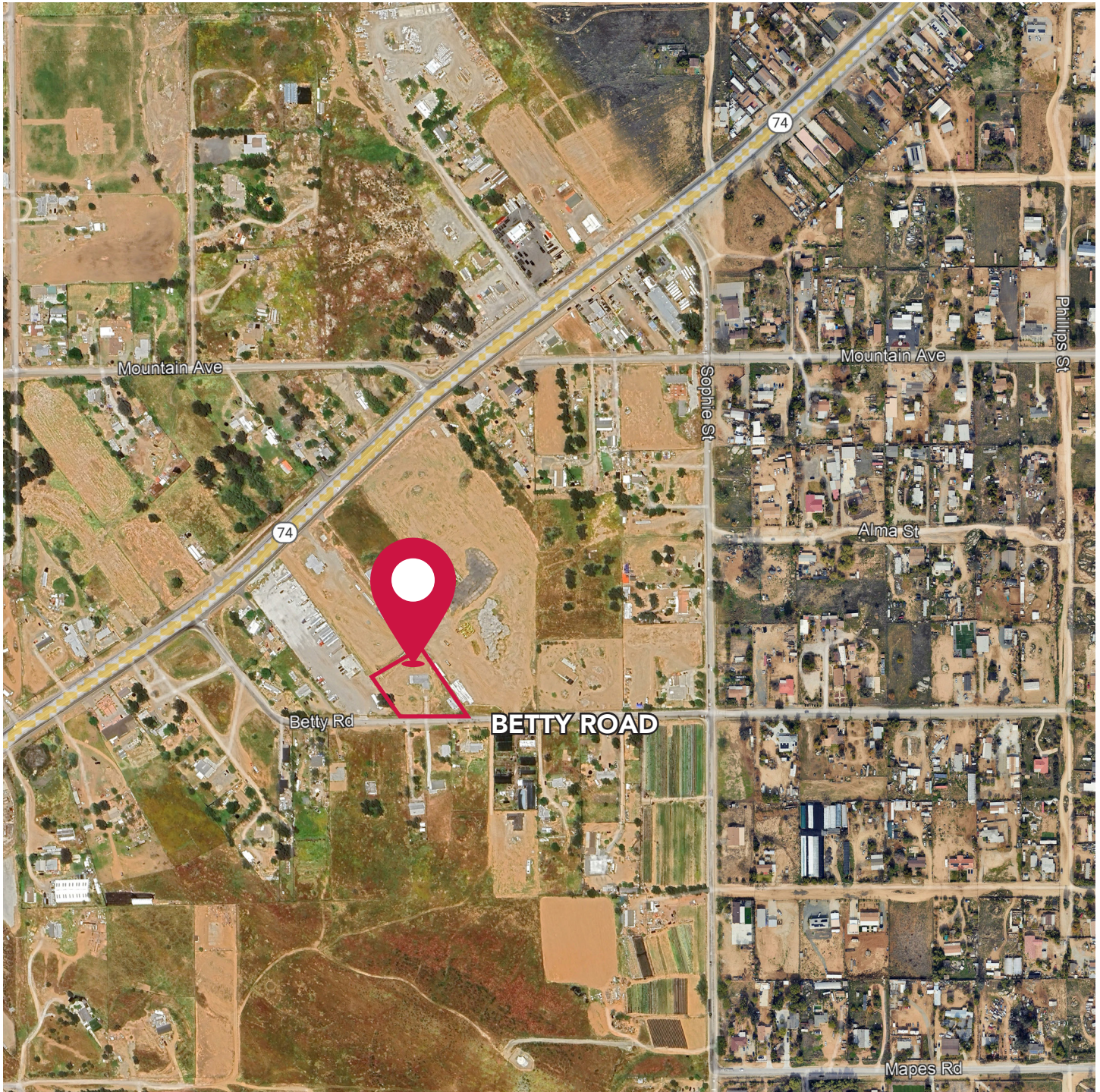
Charley Black
951.445.4507
cblack@leetemecula.com
DRE #01000597

No warranty or representation has been made to the accuracy of the foregoing information. Terms of sale or lease and availability are subject to change or withdrawal without notice. Lee & Associates Commercial Real Estate Services, Inc. - Riverside, 25240 Hancock Avenue, Suite 100 - Murrieta, CA 92562 Corporate ID# 01048055

FOR LEASE HOME WITH ±1 ACRE OUTDOOR STORAGE

22802 BETTY ROAD | PERRIS

**LEE &
ASSOCIATES**
COMMERCIAL REAL ESTATE SERVICES



Sam Robles

951.445.4519

srobles@leetemecula.com

DRE #01982449

Charley Black

951.445.4507

cblack@leetemecula.com

DRE #01000597

No warranty or representation has been made to the accuracy of the foregoing information. Terms of sale or lease and availability are subject to change or withdrawal without notice. Lee & Associates Commercial Real Estate Services, Inc. - Riverside. 25240 Hancock Avenue, Suite 100 - Murrieta, CA 92562 Corporate ID# 01048055