

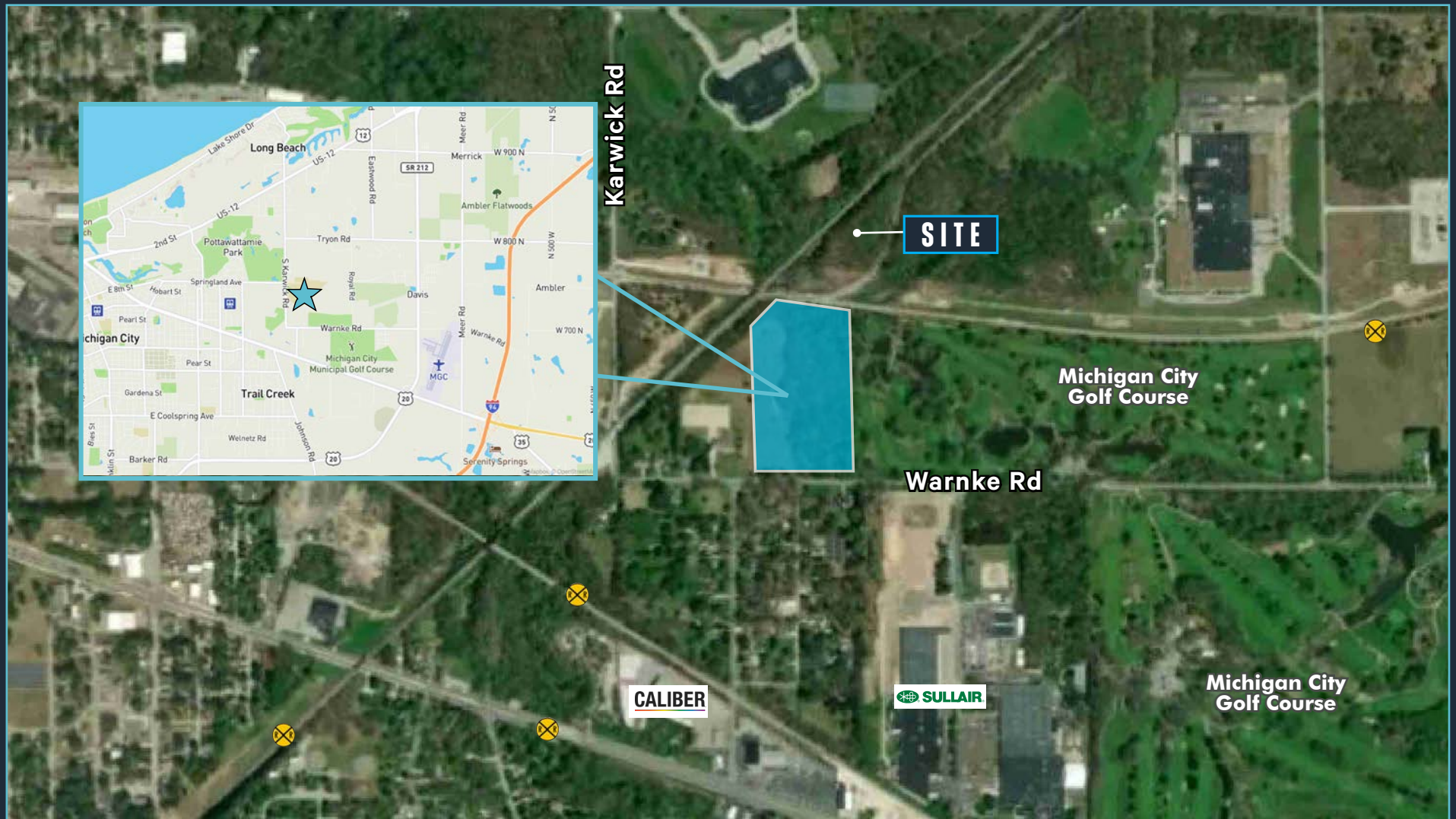
NEQ OF WARNKE RD & KARWICK RD

CBRE

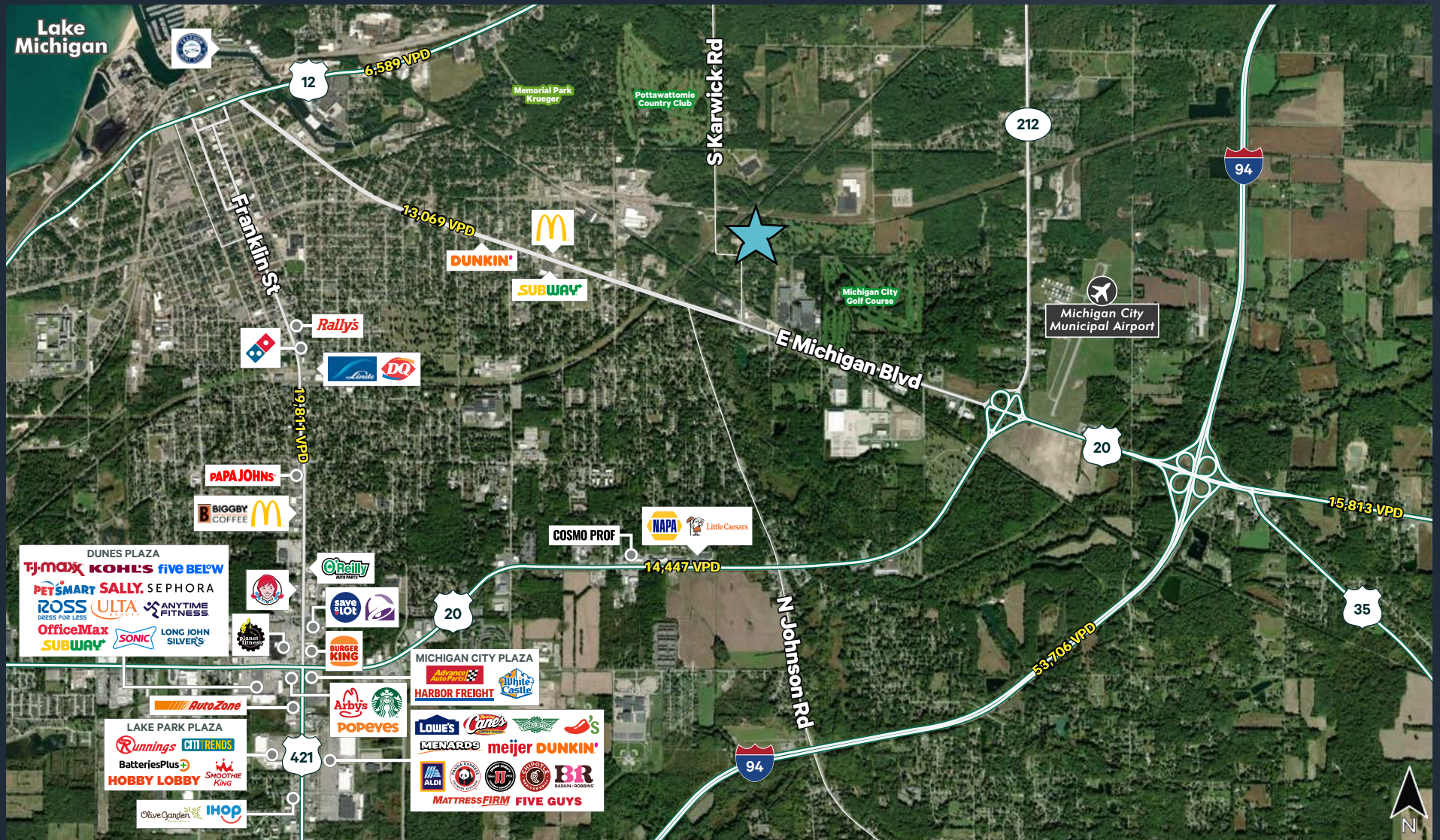
MICHIGAN CITY, IN

±13 ACRES

LAND FOR SALE



AMENITIES + TRANSPORTATION



PROPERTY HIGHLIGHTS

FOR SALE ±13 ACRES

ZONED *R1C - Residential District*

LOCATION

- Adjacent to the Michigan City Golf Course
- Easy access to I-94 via Route 20 and to Route 12 via Karwick Rd
- Best uses include Single Family & Townhome Residential

TRAFFIC COUNTS:

1,331 vehicles per day on Warnke Rd

13,069 vehicles per day on Michigan Blvd (Rt 20)

PIN NUMBERS:

46-01-26-300-019.000-022

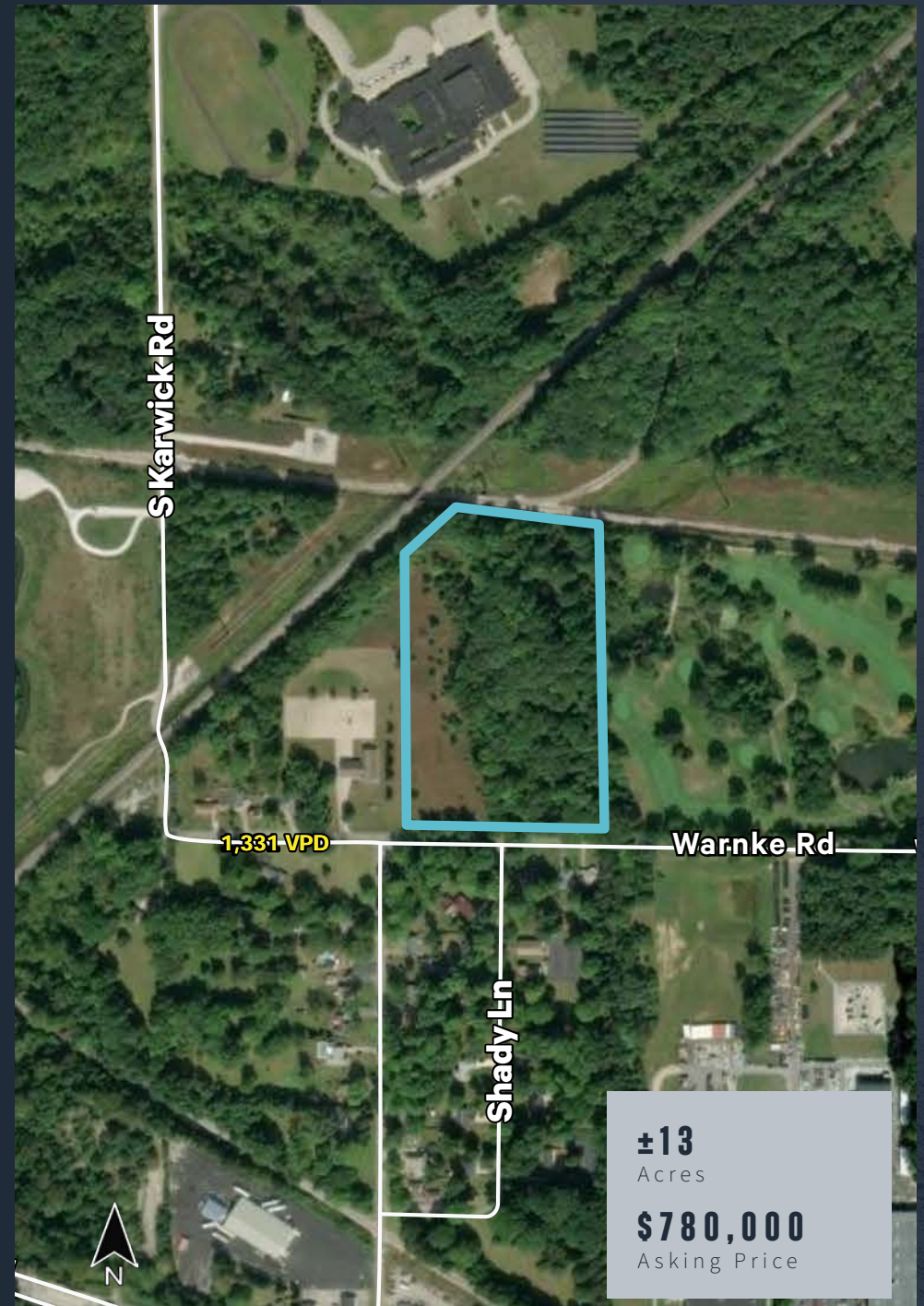
TAXES

\$2,412

ASKING PRICE

\$780,000

PLEASE CALL FOR ADDITIONAL INFORMATION



DEMOGRAPHIC SNAPSHOT



POPULATION

1 MILE: 3,595
3 MILES: 31,313
5 MILES: 46,185



HOUSEHOLDS

1 MILE: 1,444
3 MILES: 13,839
5 MILES: 19,074



AVERAGE HOUSEHOLD INCOME

1 MILE: \$65,147
3 MILES: \$75,927
5 MILES: \$79,906



AVERAGE HOUSING VALUE

1 MILE: \$174,836
3 MILES: \$247,869
5 MILES: \$274,316

CONTACT US

TONY GANGE

Executive Vice President
+1 630 573 7030
tony.gange@cbre.com

BRIAN BUCKINGHAM

Senior Vice President
+1 630 573 7021
brian.buckingham@cbre.com

