

PRIME DEVELOPMENT OPPORTUNITY

FOR SALE

APPROXIMATELY 135 FT. OF FRONTAGE

\$200,000

EXCELLENT LOCATION

0 CENTRAL AVE. SUMMERVILLE, SC 29483



RE/MAX
COMMERCIAL®

RE/MAX SOUTHERN SHORES
Jillian Weatherford
(843) 209-2410
jillian@prattandco.com

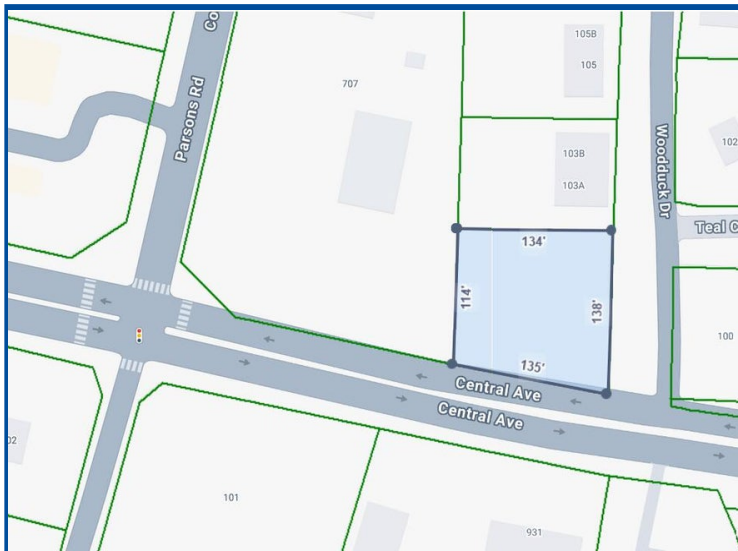
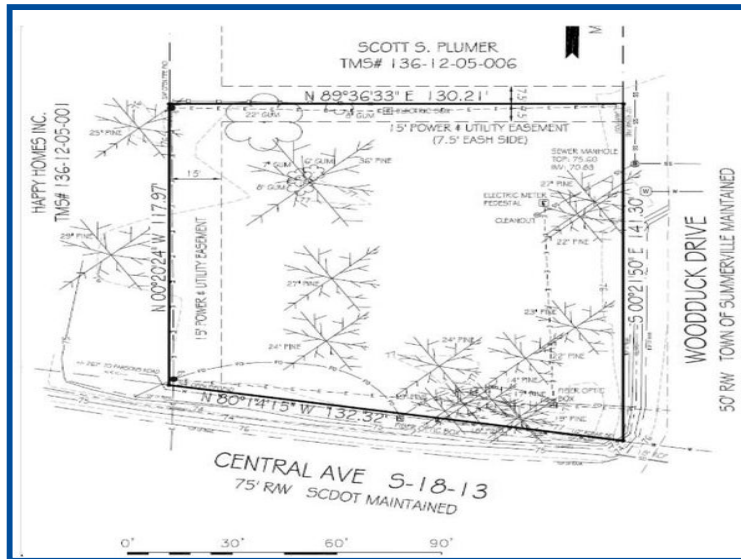
0 CENTRAL AVE.

| SUMMERVILLE |

SOUTH CAROLINA

135' OF FRONTAGE ON CENTRAL AVE.

\$200,000



- 0.39 acres Available For Sale offered at \$200,000
- Dorchester County TMS# 136-12-05-007
- Zoned NB (Neighborhood Business) in the Town of Summerville. Ideal for commercial uses such as small multi-family development, financial and professional services, and daycare centers
- Ice Maker does not convey with the property
- Excellent Location on Central Ave. between Parsons Rd. and Parkwood Dr.
- Surrounded by established residential properties, retail, office, personal service and restaurant businesses
- 20,000 VPD (*SCDOT)

RE/MAX
COMMERCIAL®

0 CENTRAL AVE.

| SUMMERVILLE |

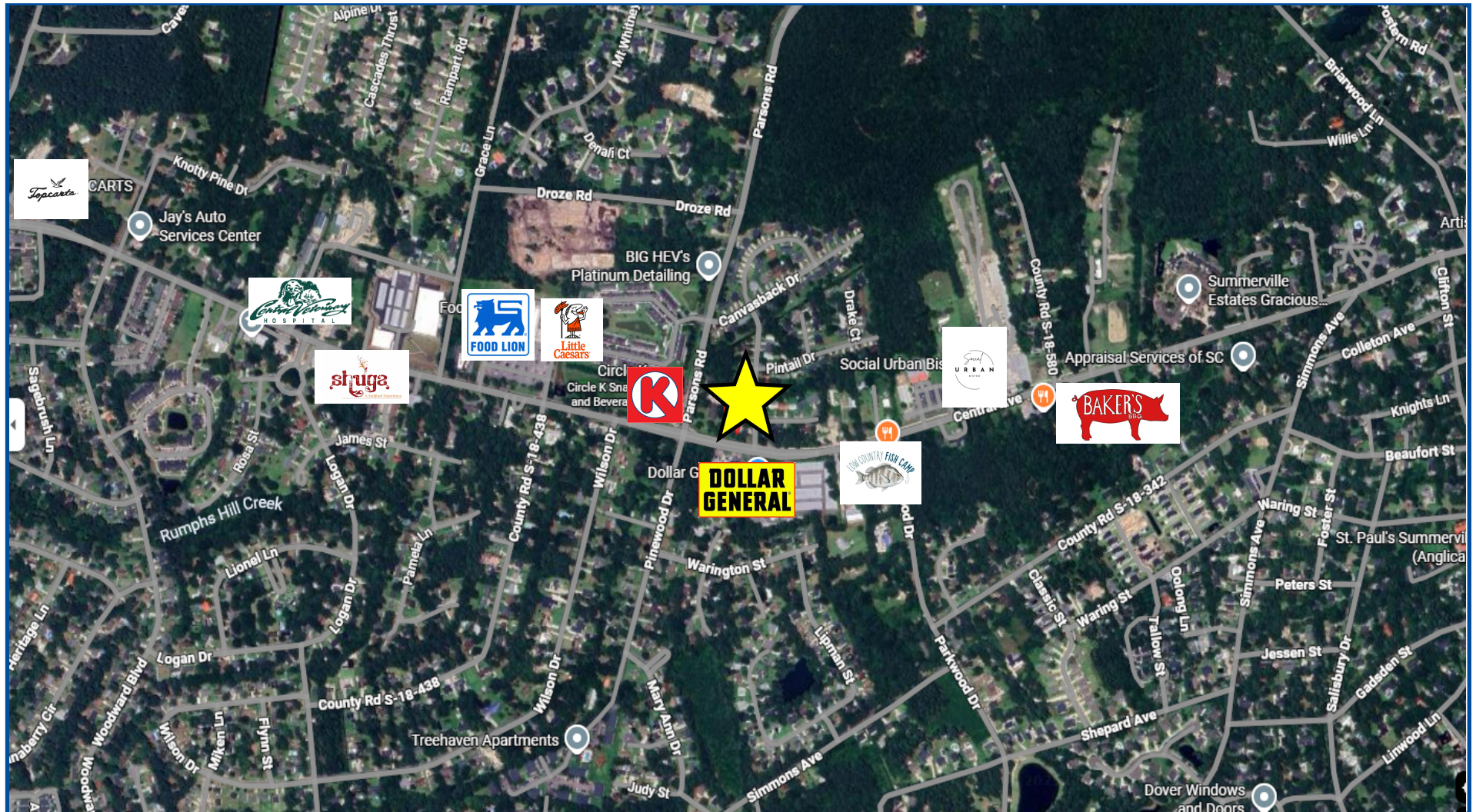
SOUTH CAROLINA

PRIME DEVELOPMENT OPPORTUNITY

FOR SALE

135' OF FRONTAGE ON CENTRAL AVE.

\$200,000



0 CENTRAL AVE.

| SUMMERVILLE |

SOUTH CAROLINA