

950 N. YORK ROAD HINSDALE



**LEE &
ASSOCIATES**

COMMERCIAL REAL ESTATE SERVICES
HEALTHCARE

Doug Pauly

Principal

dpaul@lee-associates.com

D 630.470.8268

PROPERTY OVERVIEW

BUILDING SPECIFICATIONS:

ADDRESS: 950 N. York Road, Suite 100, Hinsdale, IL 60521

BUILDING: Graue Mill Executive Center

PROPERTY TYPE: Medical Office Condo

USE: Turnkey 2nd Generation Dental Office

YEAR BUILT: 1983

BUILDING SIZE: 20,000 RBA (Class B, masonry, 2-story)

PARKING: 115 surface spaces + 43 covered (7.9/1,000 SF ratio)

ZONING: O-2 Limited Office District

SUITE 100: **1,625 SF Available**

LAYOUT: Waiting Room, 4 Exam Rooms, 1 Private Office, Lab Room & In Suite Bathroom



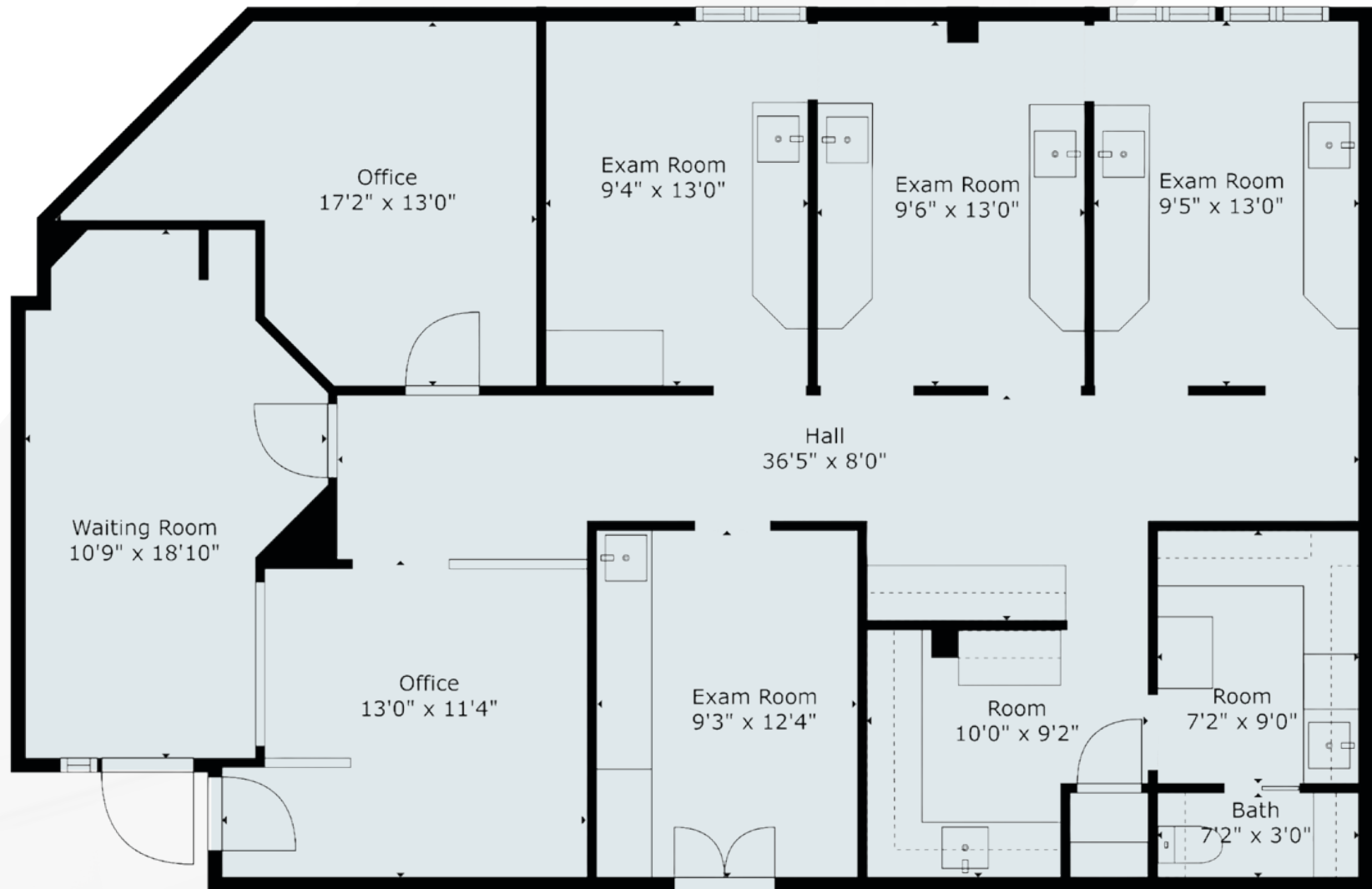
All information furnished regarding property for sale, rental or financing is from sources deemed reliable, but no warranty or representation is made to the accuracy thereof and same is submitted to errors, omissions, change of price, rental or other conditions prior to sale, lease or financing or withdrawal without notice. No liability of any kind is to be imposed on the broker herein.

PROPERTY PHOTOS



SITE PLAN

Suite 100 - 1,386 SF



PROPERTY AERIAL



LOCATION MAP



DEMOGRAPHICS

1 MILE

7,732

Estimated
Population

2,557

Number of
Households

\$390,413

Household
Income

\$18.5M

Annual
Healthcare
Expenditure

3 MILES

84,164

Estimated
Population

31,581

Number of
Households

\$262,018

Household
Income

\$225M

Annual
Healthcare
Expenditure

5 MILES

279,215

Estimated
Population

109,846

Number of
Households

\$186,408

Household
Income

\$789M

Annual
Healthcare
Expenditure



[CLICK HERE TO VIEW FULL DEMOGRAPHICS REPORT](#)