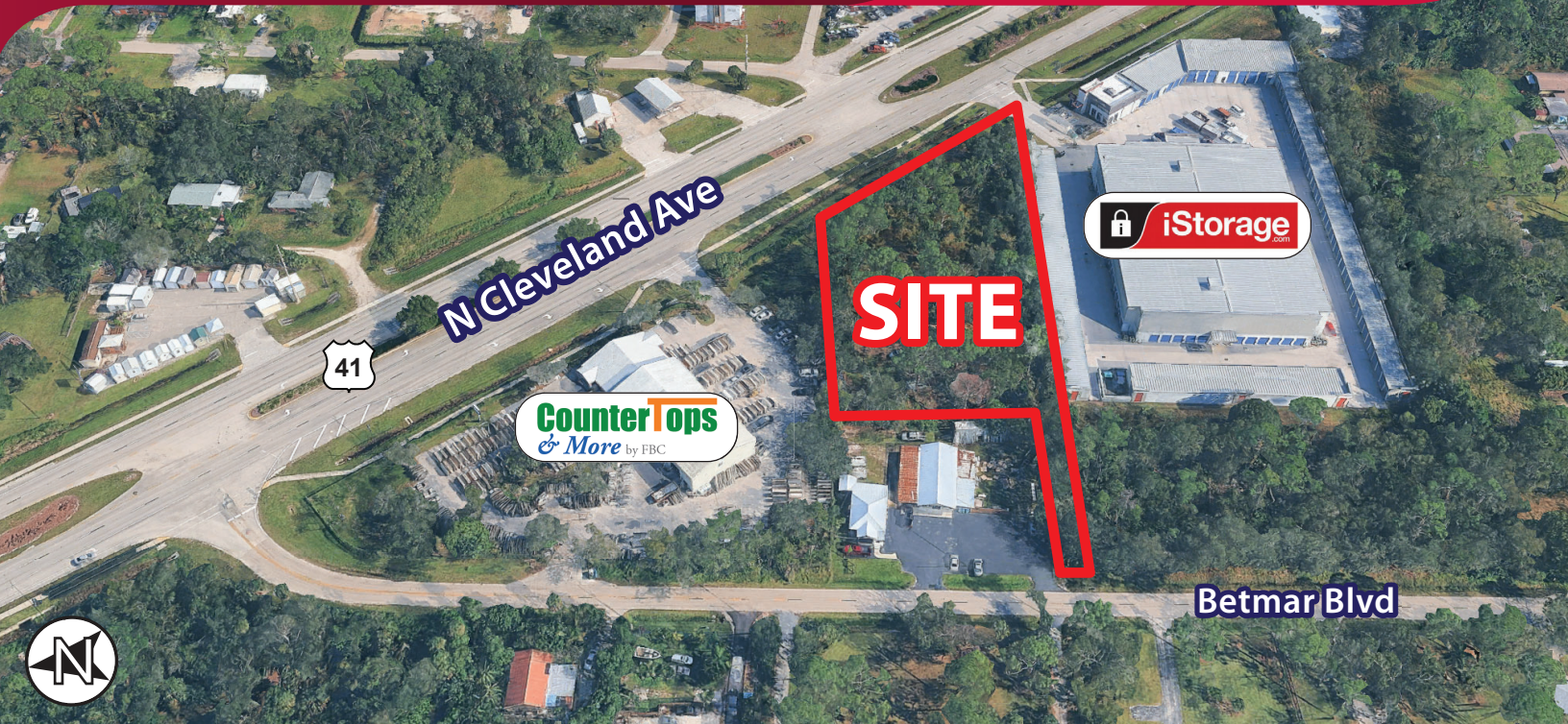


# FOR SALE

1.38± ACRES OF COMMERCIAL LAND

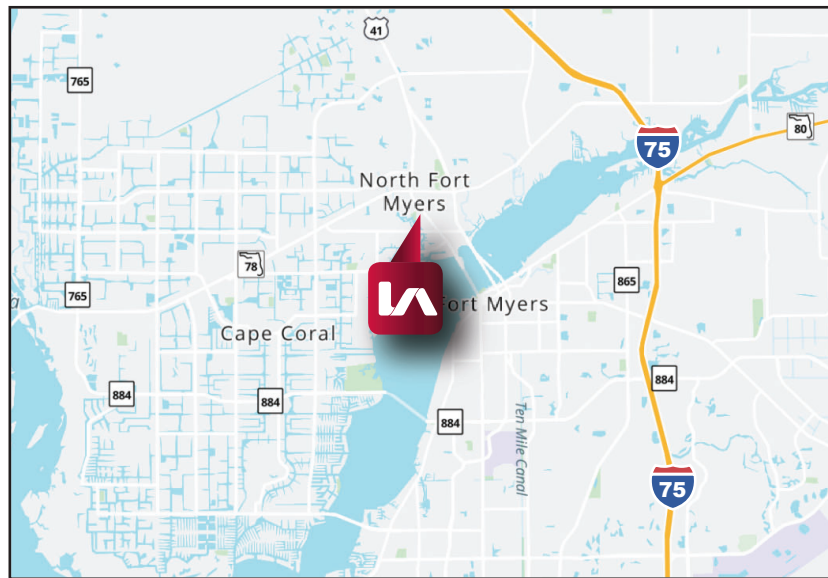
14301 N CLEVELAND AVE, NORTH FORT MYERS, FL 33903



- **LAND SIZE:** 1.38± AC
- **SALE PRICE:** \$795,000
- **ZONING:** CN-2  
([click here for uses](#))

## PROPERTY FEATURES

- 1.38± Acres of Commercial Development Land Available for Sale
- Current Zoning Allows for a Wide Variety of Uses
- Over 200' of Frontage Along N Cleveland Avenue (US 41)
- Excellent Location with Visibility to Over 30,000 Vehicles Per Day!
- Potential for Site Access from Both N Cleveland Ave & Betmar Blvd



*Please Contact:*

**Frank Martone**  
Vice President

📞 **239.210.7605**

✉️ [fmartone@lee-associates.com](mailto:fmartone@lee-associates.com)

All information furnished regarding property for sale, rental or financing is from sources deemed reliable, but no warranty or representation is made to the accuracy thereof and same is subject to errors, omissions, change of price, or other conditions prior to sale, lease or financing or withdrawal without notice. No liability of any kind is to be imposed on the broker herein.

YOUR LOCAL MARKET **EXPERT**

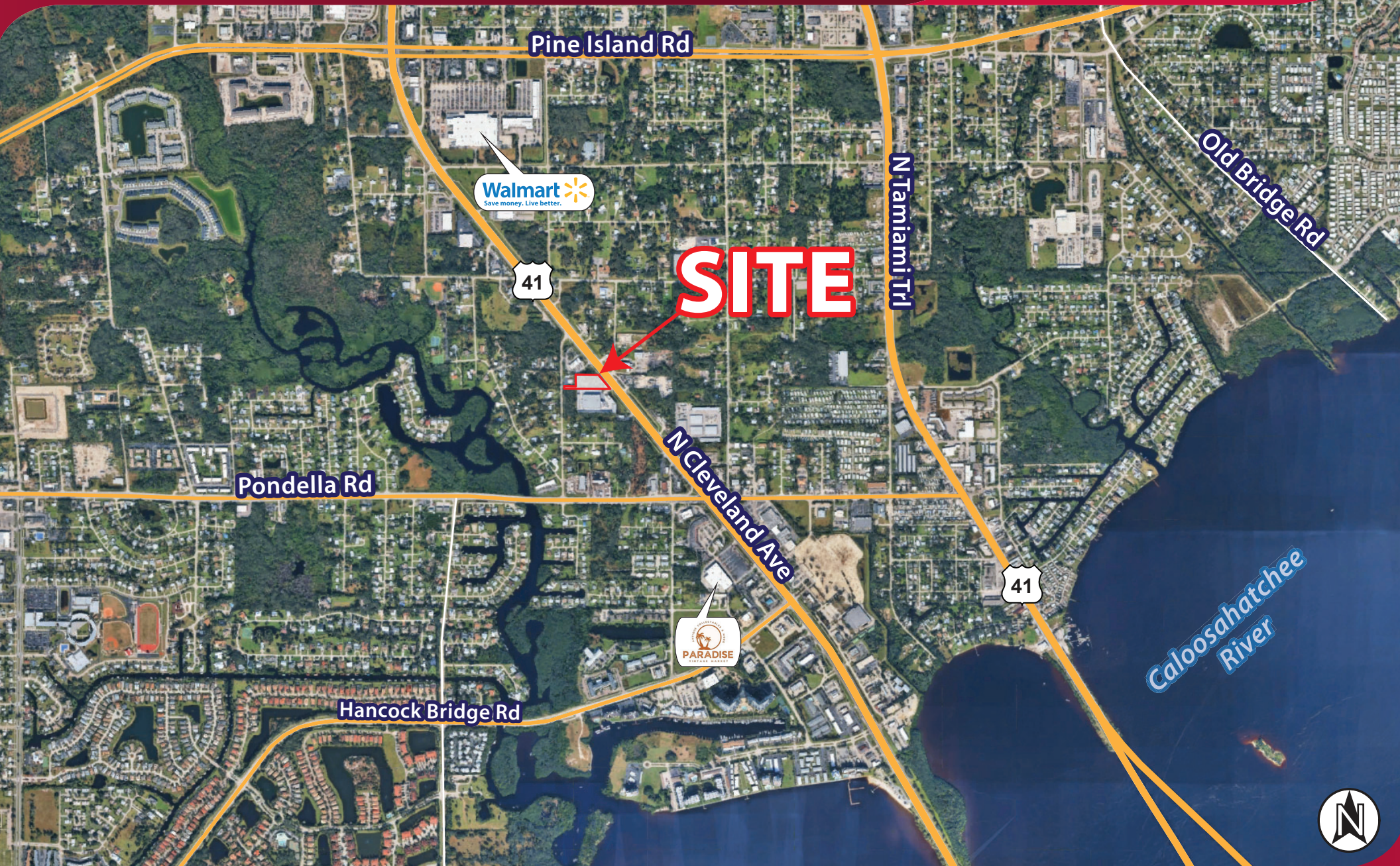
9979 Gulf Logistics Drive, Suite 210 | Fort Myers, Florida 33913 | [Lee-FL.com](http://Lee-FL.com)



# FOR SALE

1.38± ACRES OF COMMERCIAL LAND

14301 N CLEVELAND AVE, NORTH FORT MYERS, FL 33903



YOUR LOCAL MARKET **EXPERT**

9979 Gulf Logistics Drive, Suite 210 | Fort Myers, Florida 33913 | Lee-FL.com

