

Asking Price \$ 399,000

All Around this Parcel  
Solars Installed.

Parcel #  
3267-006-051  
10.01 Acres.

Site Address

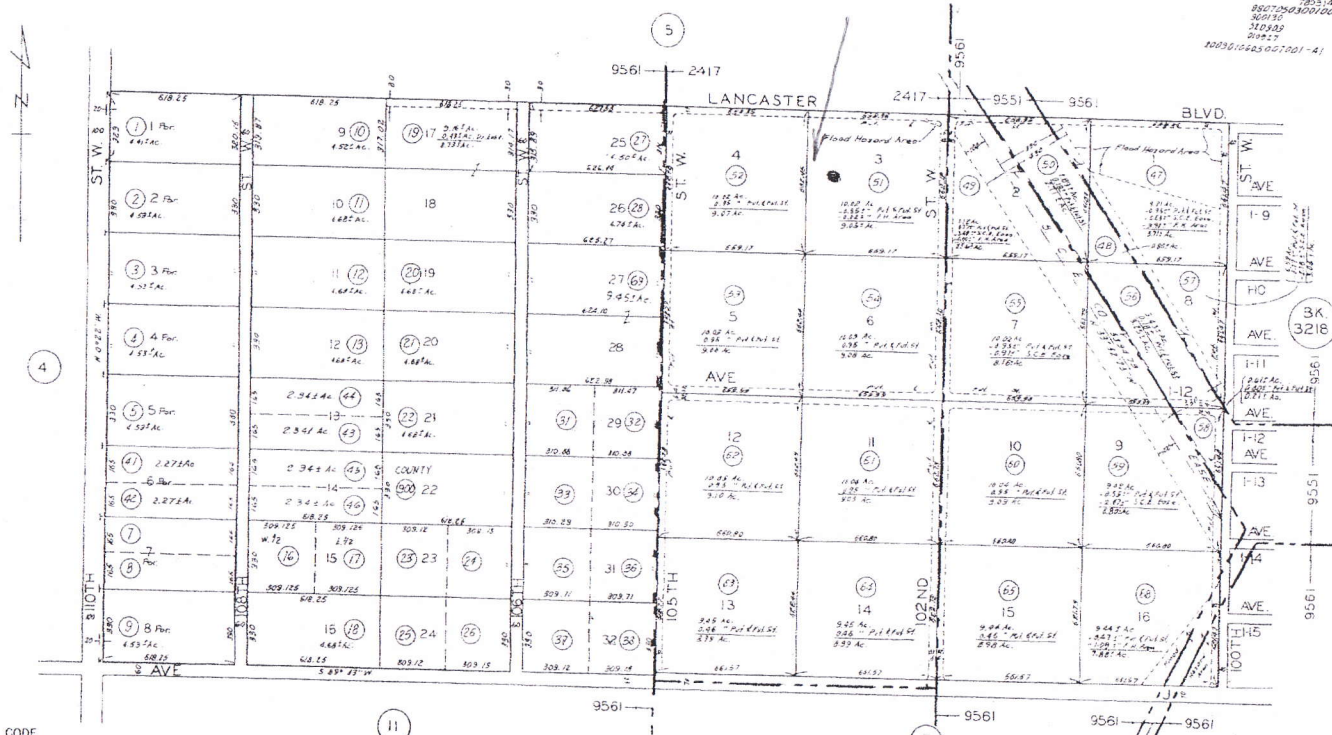
Cor Lanc Bl  
18 102 St W  
DEL SUR, CA. 93536.

3267 6

SCALE 1" = 400'

2010

939930003001-R1  
7/10/15  
110.0210  
7/10/15/15  
7/10/15/15  
8607256  
300132  
310909  
30022  
10093104483051701-A1



CODE  
9551  
9561  
2417

FOR PREV. ASSMT. SEE:  
3222 - 10 & 11

TRACT NO. 35446 M.B. 1107-46-49  
AQUEDUCT TRACT M.B. 13-60

For record dimension of Private and Future Streets  
see Tract No. 35446, M.B. 1107-46-49.

ASSESSOR'S MAP