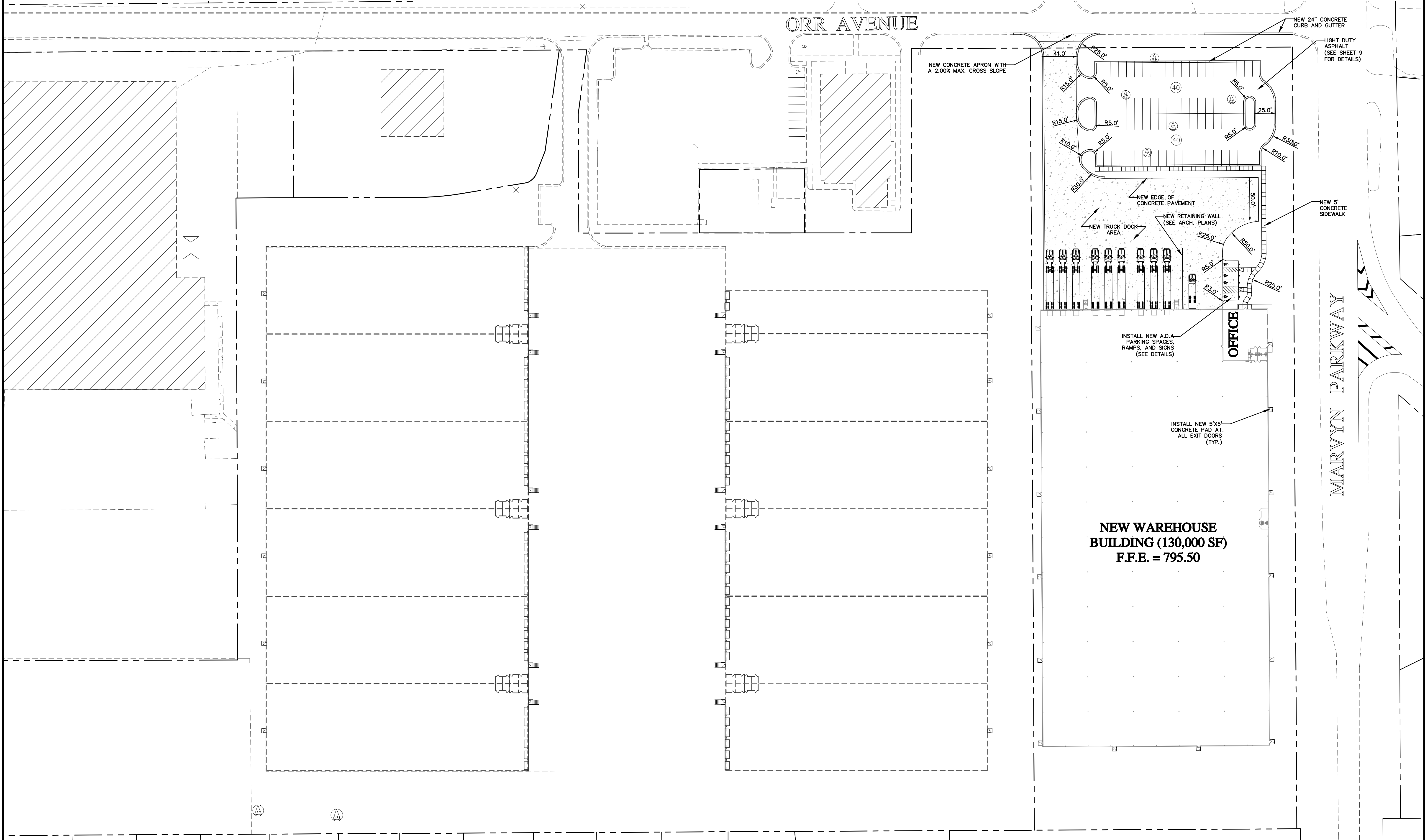
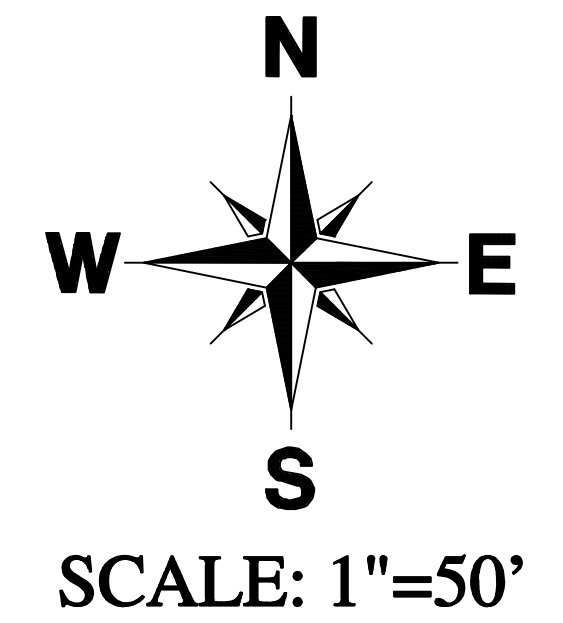
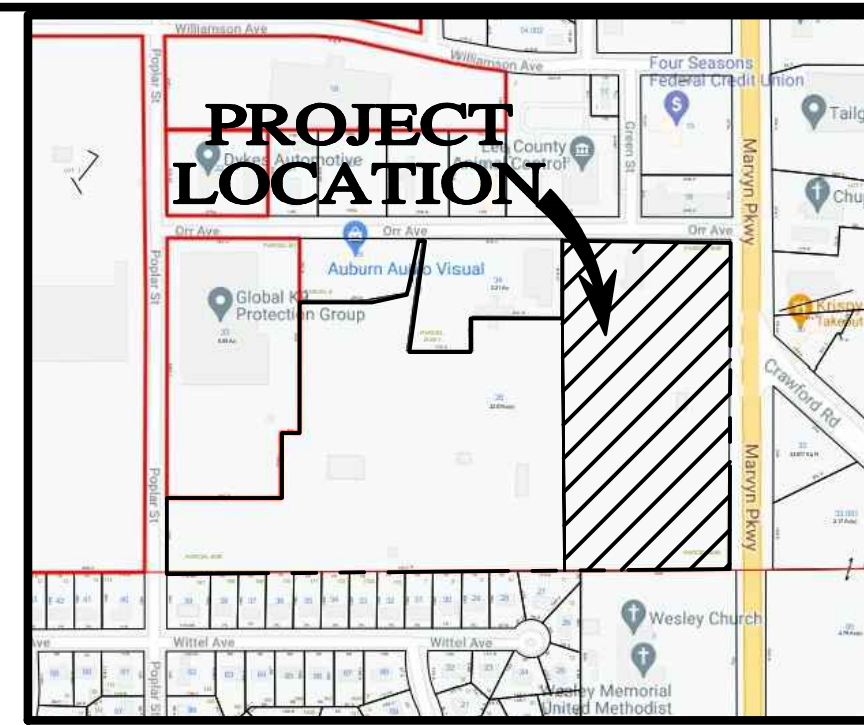


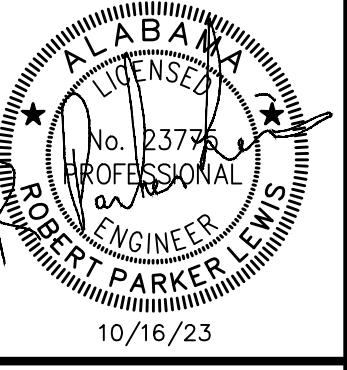
SITE DATA INFORMATION TABLE

EXISTING ZONING	C-3 (COMMERCIAL DEVELOPMENT)
PROPOSED USE	WAREHOUSE
LOT SIZE	6.42 ACRES ± (279,655 ± S.F.)
IMPERVIOUS SURFACE AREA	198,565 S.F.
IMPERVIOUS SURFACE RATIO (ISR)	0.71
GROSS FLOOR AREA	130,000 SF
FLOOR AREA RATIO (FAR)	0.48
TOTAL PARKING PROVIDED	84
ACCESSIBLE PARKING PROVIDED	4 SPACES
TYPICAL STANDARD PARKING SPACE DIMENSIONS:	9' WIDE X 18' LONG



PO BOX 2889
 2124 MOORE'S MILL ROAD
 AUBURN, ALABAMA 36830
 PHONE: (334)-466-0894
 FAX: (334)-466-0989
HYDRO ENGINEERING SOLUTIONS
 A DIVISION OF HYDRO, LLC

NO.	DATE	DESCRIPTION
1	07/19/22	REVISED WATER, SEWER, AND SITE PLAN LAYOUT
2	07/26/23	REduced BUILDING SIZE AND ADDED PARKING SPACES
3	07/26/23	ADJUSTED LAYOUT FOR CORRECTED PROPERTY LINE
4	10/19/23	ADJUSTED LAYOUT FOR CORRECTED PROPERTY LINE
5		



ORR DISTRIBUTION CENTER
PHASE 2
SITE PLAN

PFL, LTD