

FOR SALE



2776 Commerce Drive

ROCHESTER HILLS, MI 48309

Square Foot

37,016 SF

Acreage

2.3

Zoning

I-1

Year Built

1985

Property Type

Industrial, Single Tenant

Property Highlights

- For Sale
- 37,016 SF with 8,092 SF office
- 1 grade door, 4 exterior truckwells
- Sprinklered
- 2,000 amps / 480-volt power
- 10T crane at 19' underhook
- Radiant heating
- Airlines, buss ducts, outdoor storage
- Great manufacturing or warehousing building

For information, please contact:

Geoff Hill

Executive Managing Director

t 248-350-1492

Geoff.Hill@nmrk.com

Chris Hill

Director

t 248-350-1192

Chris.Hill@nmrk.com

Teddy O'Keefe

Associate

t 248-447-2715

Teddy.Okeefe@nmrk.com

26555 Evergreen, Suite 300
Southfield, MI 48076



nmrk.com

NEWMARK

Licensed in Michigan as Newmark Real Estate

The information contained herein has been obtained from sources deemed reliable but has not been verified and no guarantee, warranty or representation, either express or implied, is made with respect to such information. Terms of sale or lease and availability are subject to change or withdrawal without notice.

Sale

NEWMARK

2776 Commerce Dr Rochester Hills, MI 48309-3814



Pricing Information:

Lease Rate Range:	N/A
Lease Type:	
Sale Price:	\$4,815,000
Price per sf:	\$130.00/sf
Real Estate Taxes psf:	\$0.00
Building Insurance psf:	\$0.00
CAM psf:	N/A

Property Details:

Total Building Area:	37,016 sf	Parcel ID:	15-28-351-020
Min/Max Available:	37,016 sf	Parking Description:	50
Office Area:	8,092 sf	Rail Served:	No
Property Type:	General Industrial	Cranes:	Yes
Tenancy:	Single-tenant	Heat:	Radiant
Year Built:	01/01/1985	Clear Height Min/Max:	26.0 '
Year Renovated:		Grade/Dock Doors:	1 / 4
Zoning:	I-1	Sprinkler:	Yes
Site/Parcel Area:	2.30 acres	Power:	2,000 amps, 480 volt

Comments:

Great manufacturing or warehousing building, 4 exterior truckwells, 10T crane at 19' underhook, heavy power, airlines, buss ducts, outdoor storage.

Geoff Hill

248.350.1492

Geoff.Hill@nmrk.com

Chris Hill

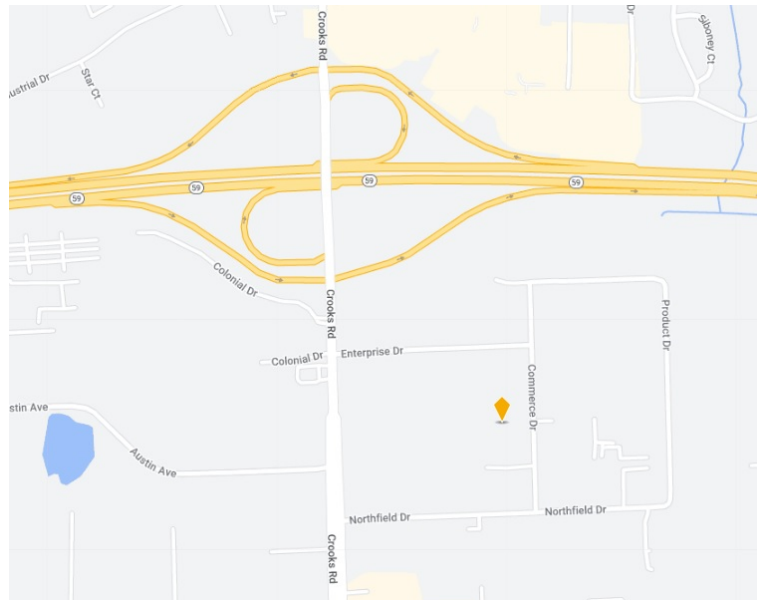
248.350.1192

Chris.Hill@nmrk.com

Teddy O'Keefe

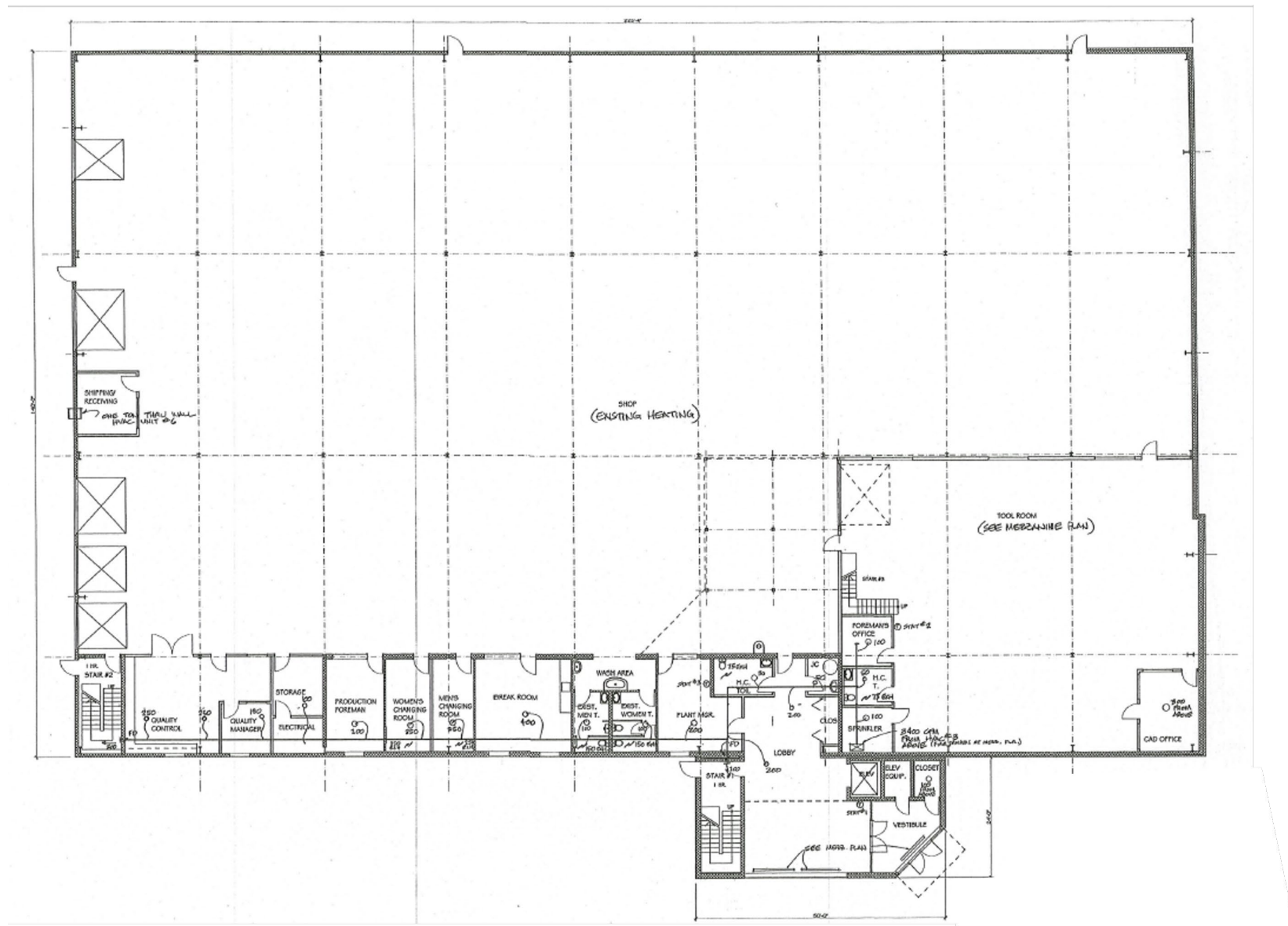
248.447.2715

Teddy.Keefe@nmrk.com



Floor Plan

2776 COMMERCE, ROCHESTER HILLS, MI



Second Story Office

2776 COMMERCE, ROCHESTER HILLS, MI

